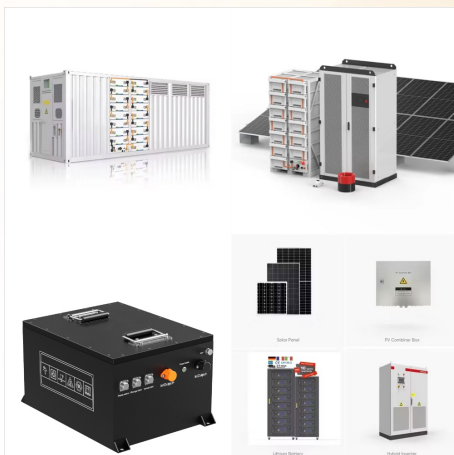




Jiabaida (JBD) Smart BMS 20S 72V 100A Li-ion Battery Protection Module. JBDBT 20S LI-ION 100A. Introduction about this JBD BMS: This bms is especially for 20S Bluetooth or smart fixed configurations only. Basically it can also be used for any other lithium technologies even if LiFePo4, Lithium Ion, LiPo and Lithium Metal by changing internal



1. What type of charger should I choose?Lithium battery must choose specific charger, do not use Charger for Leadacid battery, for leadacid charger may have MOS with high pressure breakdown protection, which will not protect of BMS over charge. Life Po4 battery charger voltage=battery string No.X3.6V, while Li-ion batt



Jiabaida BMS JBD Smart BMS 20S 24S 30S 20~30S 96V 40A 60A 80A 100A Lithium Battery PCB With Balance Uart. High quality better service and favorable price with free shipping. Battery Management System for NMC/Li-ion Lifepo4 battery



My JK 200A BMS was DOA and because it took me longer than 7 days to discover the DOA I paid the battery store to sell me garbage. Suckage! Then I bought a JBD 200A BMS and its working fine except it doesn't understand my battery capacity. When I set it to 1216ah it defaults right back to 560ah. I'd like to get the correct capacity set.



Jiabaida BMS JBD Smart BMS 13S 14S 11~15S 48V 20A 30A 40A 50A 60A Lithium Battery PCB With Balance Uart RS485. High quality better service and favorable price with free shipping. Battery Management System for NMC/Li-ion Lifepo4 battery



Jiabaida BMS JBD Smart bms 7~20S 200A 300A Lithium& Lion Battery PCB with Relay Balance Built-in BT & Optional Uart RS485. High quality better service and favorable price with free shipping. Battery Management System for NMC/Li-ion Lifepo4 battery



Jiabaida BMS JBD Normal bms 3S 4S 7S 8S 14S 16S 17S 20S 21S 24S 28S 40A 50A 60A 80A 100A 120A Lithium Battery PCB with Passive Balance. High quality better service and favorable price with free shipping. Battery Management System for NMC/Li-ion Lifepo4 battery.



Xiaoxiang BMS (Jiabaida BMS & JBD BMS) is widely used in home energy storage systems, caravan energy storage systems, backup power supplies, electric forklifts, electric motorcycles, electric golf carts, electric boats, and other electric tool battery packs. We carefully select core components to ensure reliable quality.



Jiabaida BMS JBD Smart bms 7~20S 16S 200A 300A Lithium& Lion Battery PCB with Relay Balance Built-in BT & Optional Uart RS485. High quality better service and favorable price with free shipping. Battery Management System for NMC/Li-ion Lifepo4 battery



Welcome to JBD BMS Factory/Store, enter Jiabaida-bms to enjoy 20% off! Order now! For business inquiry, contact us: Zoey@jiabaida Home Shop About JBD-SP14S004 is a software protection board solution specifically designed for 7-14 series lithium battery packs. SP14S004 supports automatic identify 7s-14s LFP NMC battery pack, and with 20A



Introduction about this JBD BMS: This bms is especially for 13S Bluetooth or smart fixed configurations only. Basically it can also be used for any other lithium technologies even if LiFePo4, Lithium Ion, LiPo and Lithium Metal by changing internal parameters after connecting to Bluetooth App or computer. Most important that it is strictly for



BMS version number 30, read the BMS version, cannot be modified BMS model SP17S003, read cannot be modified Production Date 2022-1-18, read unmodifiable BMS address 24 digits, read and cannot be modified Rated charging current 20.0A, read cannot be modified Rated discharge current 19.0A, read unmodifiable



Description JBD BMS 24V/100A Features: Over Voltage Protection: the BMS stops the charging current while still allowing loads to draw power. Under Voltage Protection: ensures that power is not drained from the battery pack if cells drop below safe voltage then enables the cells to reach the minimum safe voltage level. Over Current & Short Circuit Protection: ???



JBD-SP04S020 is designed by Dongguan jiabaida Electronic Technology Co., Ltd. It is an intelligent protection board scheme specially designed for 4 series battery packs of start-up battery and electric energy storage products is suitable for lithium batteries with different chemical properties, such as lithium ion, lithium polymer, lithium iron phosphate, etc.The ???



SmartBMS Utility For your Daly and JBD BMS! Are you tired of worrying about your battery performance? Say goodbye to uncertainty and embrace the power of technology with SmartBms Utility. Download Why Choose SmartBMS App? Custom Theme Revitalize your app with our Theme Feature, offering a wide selection of captivating designs for a personalized and [???



Jiabaida BMS JBD Smart BMS 6~22S 6S 8S 16S 20S 22S 250A Li-ion Lithium Battery PCB With Uart Rs485. High quality better service and favorable price with free shipping. Battery Management System for NMC/Li-ion Lifepo4 battery



Even then, no personal data is sent, only the BMS's technical data. Desktop App with password reset tool: Overkill-Solar-bms-tools for Windows (Download latest release package, unzip and run) (JBD Chinese version) Old Android App: Android_app_xiaoxiangBMS_3.1.1026.apk. Download and install the APK, Allow 3rd party apps to install. (JBD



JBD Smart bms 10~17S 60V 14S 60V 40A 60A 80A Lithium Battery PCB with NTC Ports.High quality better service and favorable price with free shipping. Battery Management System for Li-ion Lifepo4 battery.



I installed my jbd bms and have now tried all available apps mentioned above .. while all cell values are showing, and the current has been consistent but its been 10 or so hours but the cells arent full.. the cell values were 3.289v and now its reached 3.4v but the charger is showing a lot of Ah has gone through.. The problem though is the Ah



Also, an Overkill BMS is a rebadged JBD BMS.
===== I'll do a Show and Tell post of the 24 volt, 50 ah Battery I built. The BMS I bought is a 60 amp version. I am finding out with this build, even with getting the case, BMS, cells, and some assorted hardware, its harder finding the last few parts that I wanted. The B- is a 1/4 in stud, but the



JBD BMS (Battery Management System) for 25,6v LiFePO4 (Lithium Iron Phosphate) battery pack with 8 string 3,2v cells For managing / protecting 8 x 3,2v cells in series connection Rated peak discharge current of 100 amp Rated maximum charge current of 60 amp Common port for charge and discharge Cell balance function Bluetooth communications module included ???



Buy Jiabaida Smart BMS Lifepo4 7~20S 200A 300A
Li-ion Lithium Battery Protection Circuit Board BMS
with Built-in Bluetooth and Common Port (6~20S
3.2V 300A BT): Battery Chargers - Amazon FREE
DELIVERY possible on eligible purchases
JBD-AP20S006 is designed by Dongguan Jiabaida
Electronic Technology Co., Ltd. for 7-20 battery ???



Introduction about this JBD BMS: This bms is
especially for 14S Bluetooth or smart fixed
configurations only. Basically it can also be used for
any other lithium technologies even if LiFePo4,
Lithium Ion, LiPo and Lithium Metal by changing
internal parameters after connecting to Bluetooth
App or computer. Most important that it is strictly for



???????????????????????????????? 1/4
?????u???????????????????????????? 1/4 ?????????????
??>>DIY??<<????????????????????BMS????????????
????????????JBD???DALY??(R)2?????<????????
????????????????????????(C)????????