

Does Kawasaki use a power valve?

Kawasaki uses a power-valve system called KIPS(Kawasaki Integrated Power Valve System) on their two-stroke bikes. The KIPS utilizes both alterations in port height, closing of the secondary port ducting, and a resonant chamber. KIPS is operated by a mechanical governor on single cylinder machines.

What is a two stroke power valve system?

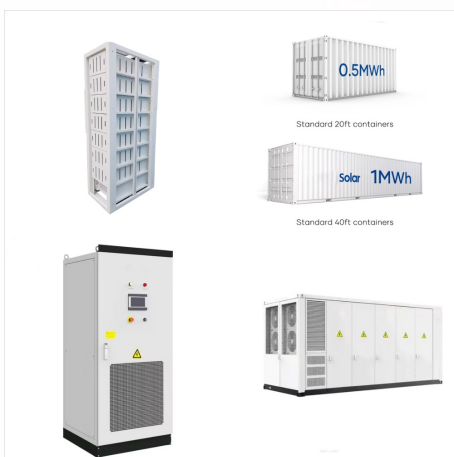
The two-stroke power valve system is an improvement to a conventional two-stroke engine that gives a high power output over a wider RPM range. A stroke is the action of a piston travelling the full length of its cylinder.

What is power valve actuation?

Power valve actuation can be by mechanical (RPM dependent) or electric (servo motor) means increasingly with electronic control. Electronic control offers a greater degree of accuracy as well as being able to vary the opening of the valve and be tuned to conditions.

Does a Yamaha YZ have a power valve?

The YZ series of motocross bikes has a mechanical power valve which is activated at RPM speed. The YPVS is only found on the liquid-cooled bikes not air cooled versions. Yamaha have also used a guillotine version in some of their later models such as the 1994 TZR250 3XV SP model, and many later TZ road race bikes.



The YPVS is only found on the liquid-cooled bikes not air cooled versions. Yamaha have also used a guillotine version in some of their later models such as the TZR250R SPR model. Yamaha was actually the first company to produce consistent results with their YPVS in their race bikes.

KAWASAKI INTEGRATED POWER VALVE SYSTEM



The KX85 also employs the Kawasaki Integrated Power-valve System (KIPS(R)) to boost mid-range and top-end power with its independent slider valves for each port, replacing a previous three-piece design to reduce maintenance and improve reliability. Kawasaki Integrated Power-valve increases more mid-range torque and top-end power Jetting in



Super KIPS (Kawasaki Integrated Power Valve System) adalah sistem gas buang yang dikembangkan oleh Kawasaki. Memanfaatkan buka tutup katup pada saat putaran mesin rendah dan tinggi dengan tujuan untuk meminimalisir gas buang. Katup Super KIPS yang ada pada Kawasaki Ninja 2-tak akan terbuka ketika putaran mesin di atas 7.000 rpm.



??? Kawasaki Integrated Power-valve System varies exhaust port height, helping to produce a broad powerband with more low-end torque while retaining excellent top-end power ??? Six-speed transmission offers positive shifting action and rugged durability; hard chrome-finished shift forks resist wear and seizure

KAWASAKI INTEGRATED POWER VALVE SYSTEM



The 28mm Keihin carburetor and carbon-fiber reed valve assembly help provide a crisp throttle response while the Kawasaki Integrated Power-valve System (KIPS(R)) helps produce a powerband with good low-end torque and a strong top-end rush. The power then passes onto a smooth-shifting six-speed transmission, giving the KX a gear for every



kawasaki kx85 totalmotorcycle key features. high-performance liquid-cooled 2-stroke engine; kawasaki integrated power-valve system; 6-way adjustable handlebar mounts; sophisticated suspension components; aggressive styling; optional carburetor tuning jets are included to optimize performance based on riding conditions; new stronger 6



Its 99 championship-bred cubic centimeters deliver hard-hitting power and a broader power curve than the KX85, thanks in part to the proven Kawasaki Integrated Power-valve System (KIPS(R)) which amplifies the KX100's low-end torque and creates a more seamless transition to its furious top-end rush.

KAWASAKI INTEGRATED POWER VALVE SYSTEM



Kips: Kawasaki Integrated Power-Valve System.
disclaimer: i am not liable for what you do to your bike, or any dmgage you cause from info here, and all that fun stuff, this is not a replacement for the manual, go get a real ???



"85 KX500-B1 and "86 KX500-B2 models comprise the 2nd Gen ??? it was with this batch, liquid cooling and KIPS (Kawasaki Integrated Power Valve System) were introduced. Paired with Team Green's highly-acclaimed multi-link suspension system and redesigned power mill, these added features placed the KX 500 on the radar of the mighty Honda



The Kawasaki Integrated Power-valve System (KIPS(R)) and tuned exhaust pipe contribute to the KX85's tractable power delivery, which translates into better drive off the corners and more control for young riders of varying skill levels.

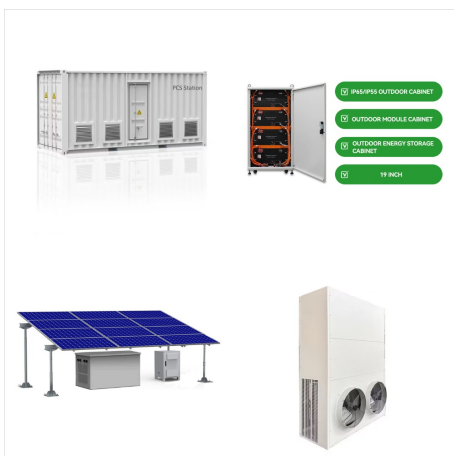
KAWASAKI INTEGRATED POWER VALVE SYSTEM



GridOto ??? Ternyata gampang, begini cara deteksi kalau mekanisme Super KIPS (Kawasaki Integrated Power Valve System) di Kawasaki Ninja 150 yang mengalami gejala tersangkut. Jangan Dipaksa Ini Solusinya)Sebenarnya posisi tersangkutnya katup Super Kips juga bisa diketahui hanya dari suara knalpot motor. Suara knalpot akan terasa lebih



The KX100s liquid-cooled two-stroke engine delivers more power by virtue of its greater displacement. Its 99 championship-bred cubic centimeters deliver hard-hitting power and a broader power curve than the KX85, thanks in part to the proven Kawasaki Integrated Power-valve System (KIPS) which amplifies the KX100s low-end torque and creates a more ???



KIPS Ninja (Kawasaki Integrated Power Valve System) Sistem Kerja KIPS. Sistem katup KIPS dan CDI bekerja sama untuk mengatur keluaran daya dari mesin agar optimal. Keduanya bertanggung jawab dalam pengaturan ukuran lubang keluaran, timing pembukaan katup dan timing pembakaran.

KAWASAKI INTEGRATED POWER VALVE SYSTEM



The YZ series of motocross bikes has a mechanical power valve which is activated at RPM speed. The YPVS is only found on the liquid-cooled bikes not air cooled versions. Yamaha have also used a guillotine version in some of their later models such as the TZR250R SPR model.



The only moving parts inside simple two-stroke engines are the crankshaft, the connecting rod, and the piston. It is the same simplicity in design, however, that causes a two-stroke engine to be less fuel-efficient and produce high specific levels of undesirable exhaust gas emissions. At the bottom of the power stroke, the transfer ports, which deliver fresh fuel-air mixture, are open at the same time???



The Kawasaki Integrated Power-valve System (KIPS) is still used inside the cylinder that was first introduced back in 2014 and has similar technology to the last-generation KX125 power-valve system. A Keihin 28mm carburetor feeds ???

KAWASAKI INTEGRATED POWER VALVE SYSTEM



Kawasaki Integrated Power Valve System (KIPSR)
KIPSR system varies exhaust-port height for increased horsepower and torque at all rpm NEW independent valves replace the old three-piece valve design, increasing reliability and reducing maintenance Produces a broad powerband with more mid-range torque and excellent top-end power



The KDX200 was an Enduro-style, 198-cc 2-stroke motorbike produced by Kawasaki between 1983 and 2006. Featuring inverted front forks, Uni-Trak(R) rear linkage, and a modified KIPSR (Kawasaki Integrated Power Valve System), the bike offers plenty of power perfect for tight, technical single tracks.



The 28mm Keihin carburetor and carbon-fiber reed valve assembly help provide a crisp throttle response while the Kawasaki Integrated Power-valve System (KIPSR)) helps produce a powerband with good low-end torque and a strong top-end rush. The power then passes onto a smooth-shifting six-speed transmission, giving the KX a gear for every