



What are PV-Sunshades? The latest and innovative way to use the shades to protect the assets and structures from the harsh sun rays is Photovoltaic Sunshades. Like any ordinary shades, extended structure is required for the PV-Sunshades. Photovoltaic panels integrated in the extended roofs for power production. The flat or curved surfaces of the shades absorb ???



Maximizing the Benefits of Solar Panel Roof Mounts. When it comes to maximizing the benefits of solar panel roof mounts, there are several strategies to consider. By optimizing panel placement and orientation, ???



A flat roof is the ideal place for a solar photovoltaic installation to generate site-sourced electricity. Renewable energy generation has a big role to play in the delivery of a net zero carbon building and integrating renewables allows it to meet a proportion of its own energy needs, minimise carbon emissions, and reduce building running costs.



Prototyping Roof Mounts for Photovoltaic (PV) Panels: Design, Construction and CFD Validation.
 Mohammad AL-Rawi 1,*, Nived Rajan 2, Sreeshob Sindhu Anand 3, Tony Pauly 4, Nikhil Thomas 5. 1 .



PV panels become less efficient as they become warmer, at a rate of 0.025% per degree Celsius at ambient temperatures over 28 °C (Ubertini and Desideri, 2003), so panel efficiency can be improved by cooling the surface of the panel. Since green roofs are cooler than black roofs (Scherba et al., 2011), and heat up more slowly than a white roof, they are ???



It offers a 100% sustainable alternative for buildings with its advanced daylight lighting and integrated roof solar energy system. Thanks to its special pitch system, it has a structure compatible with photovoltaic modules of all sizes. It has the advantage of production in its ??skenderun location.



Wholesale Solar Panels For Sale Homeowners and all types of businesses these days are seeking ways to cut down on their power consumption bill and reduce the overall operational cost. For this purpose, solar energy is the best alternative for them to be cost-effective and energy-efficient. In the upcoming decade, energy costs are estimated to become double. Solar panels ???



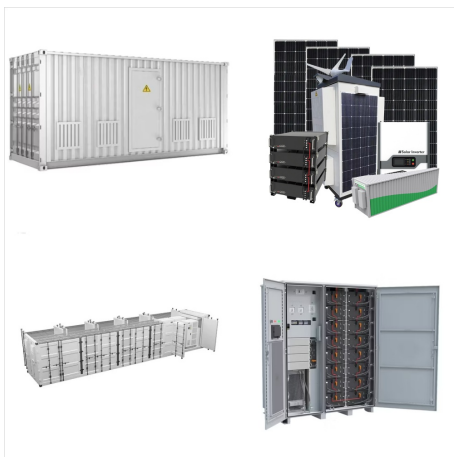
2 ? DMEGC Solar says its new solar panels weigh only 15.3 kg and have a power output of up to 270 W. The new products combine a double-glass design with TOPCon cell technology.



PV System Design The PV module converts sunlight into DC electricity. Solar charge controller regulates the voltage and current coming from the PV panels going to the battery and prevents battery overcharging and prolongs the battery life. Inverter converts DC output of PV panels or wind turbines into a clean AC current for AC appliances or fed back into the grid line. Battery ???



Why install solar panels on your roof, when you can make your roof tiles solar panels? It's a futuristic and aesthetically pleasing option for homeowners who need a new roof or are building a new home entirely. Including the price of Powerwall batteries, your home might cost \$50,000 to \$100,000 to cover in PV roof tiles; Can take 2 weeks



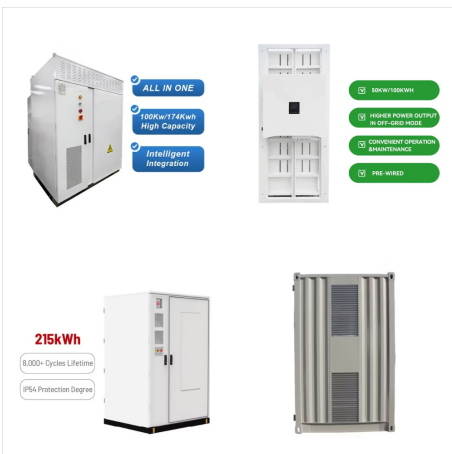
Sustainability and energy independence are crucial in modern home design. Our photovoltaic roof tiles are tailored to meet your specific power needs while ensuring durability, protection, and energy efficiency. Designed to blend seamlessly with residential roofs, these tiles offer a perfect combination of high performance and architectural appeal, enhancing both functionality and ???



In roof PV panels have the advantage that they tend to be more aesthetically pleasing as they sit lower in the roof and look like an intended part of the roof rather than an add-on. The slight disadvantage is that the panels are harder to ventilate and the systems are generally 5-10% less efficient than on roof systems because they operate at



PV panels, solar heat pipes, and micro wind turbines are examples of onsite renewable energy production. Because of their easiness of deployment and independence from the microclimate (Chemisana and Lamnatou, 2014, Hui and Chan, 2011), PV panels have been widely used in building design as a green feature (Awad and G?l, 2018, Lau et al., 2017, Ouria ???



One system: The SOLROOF system consists of integrated FIT VOLT photovoltaic panels, FIT modular roof panels, optimisers and SolarEdge system components. One assembly: Thanks to the modularity of FIT VOLT and FIT panels, the ???



RHEINZINK-PV is a flat-mounted, roof-parallel solar system. The specially developed seam and module clamp is simply attached to the double standing seams. It is important to choose the right panel width. Our range includes: Suitable PV modules for RHEINZINK double standing seam roofs in the centre-to-centre dimensions 530 mm (600 mm belt



for ROOF MOUNTED PHOTOVOLTAIC (PV) PANEL SYSTEM, 2019 CBC, Section 1505.9. Cal Fire Logo & SFT Logo OFFICE OF THE STATE FIRE MARSHAL INFORMATION BULLETIN 22-002 Issued: October 21, 2022 Page 6 of 6 Automatic Sprinklers Automatic sprinklers are not required for S -2 open parking garages per CBC 903.2 unless



Roof Attachments One of the major components of a solar panel system is the solar racking system or mount system. It is the foundation that holds your solar panels in place. Typically, they are used to attach solar PV modules to your property's roof, open ground, or another flat surface near your property. When installing a solar panel system, proper installation should be ???



Explore insights on roof solar panels, including costs, installation tips, and the numerous benefits of adopting solar energy for your home. Skip to content (855) 994-1142 California and Florida. Roof solar panels, also known as photovoltaic (PV) panels, are devices installed on the roof of a building to capture sunlight



Wholesale PV Wires & Cables Solar wires and cables, which are also called solar panel cables and PV wires, refer to wires used to connect solar panels with the photovoltaic system. Choosing the right wire for solar energy systems is critical for solar users for their smooth functioning and remaining intact. Getting these wires wrong and choose PV wires that are too small for a PV ???



Building envelope i.e., roof and outer walls are in direct contact of incoming solar radiation on an urban and building scale, therefore urban trees, green walls, and green roofs are excellent ways to reduction in energy demand, solar heat gain, increase indoor thermal comfort and rain water management (Chakraborty and Lee, 2019, Yang et al., 2020, Tabatabaee et ???



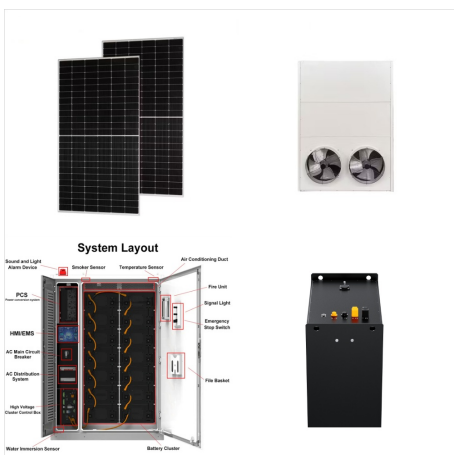
Kaneka's roof-integrated photovoltaics (RIPV) revolutionizes solar technology with a seamless integration process, ensuring easy installation for users looking to harness clean energy effortlessly. Built with durability in mind, the RIPV system is engineered to withstand the tests of time and diverse weather conditions, providing a reliable



JinkoSolar has announced the launch of its next generation Tiger Neo 3.0 TOPCon solar panel, delivering the world's most powerful module of up to 670W and the industry's first-ever 495W



RHEINZINK-PV is a flat-mounted, roof-parallel solar system. The specially developed seam and module clamp is simply attached to the double standing seams. It is important to choose the right panel width. Our range includes: ???



Solar type roof design refers to the integration of solar panels into the architecture of a building. This design not only maximizes energy efficiency but also enhances the overall aesthetic appeal of a property. Unlike traditional solar panel installations that sit on top of existing roofs, solar type roof designs incorporate solar technology directly into the roofing ???



One system: The SOLROOF system consists of integrated FIT VOLT photovoltaic panels, FIT modular roof panels, optimisers and SolarEdge system components. One assembly: Thanks to the modularity of FIT VOLT and FIT panels, the installation is quick and carried out by authorised roofers. One warranty: The roof is covered by a single manufacturer's warranty.



Advancements in Solar PV Roof Panels
Technology- Recent technological strides have led to significant improvements in solar PV roof panels, enhancing their efficiency and cost-effectiveness. Innovations in cell technology and bifacial designs are pioneering a new era in solar energy capture, expanding application scenarios.



A roof-mounted solar panel system is a type of installing PV modules in your house roof. This type of solar panel installation is an excellent option for both residential and commercial applications. Unlike other methods, it is way more economical and low in maintenance.



"R324.4.1 Roof live load. Roof structures that provide support for photovoltaic panel systems shall be designed for applicable roof live load???"

"R907.2 Wind Resistance. Rooftop-mounted photovoltaic panel or modules systems shall be installed to resist the component and cladding loads specified in Table R401.2(2)."



8 steps for installing solar panels on roofs: 1. Identify the roof space 2. Check the roof condition 3. Ensure proper transmission of conduit. A roof-mount solar system is a photovoltaic (PV) system that generates electricity through solar panels mounted on a rooftop. Owing to their easy installation and low maintenance, roof-mount solar



The components are easy to install and can be used for flush as well as tilted systems, on a large variety of roof types. The interfaces, rails and clamps are of high quality, robust and corrosion-resistant materials including structural grade alloys. Universal Cable Clip for PV Panels for Holding 4 Cables, Landscape. EZ-CC-PV/4/L. Solar