



Kseb Ongrid solar wheeling, KSEB Assistant engineer Nadhakumar sir
a'ua'?a'?a'|au?a'?a'?a'?a'?au?a'?a'au?a'au?au
3/4 , Masters Green energy expo 2023 Calicut



In spite of normal inverters, solar inverter use electricity generated from solar panels to charge the batteries. When the battery becomes 90% power Solar inverters switches OFF the KSEB power and load runs on stored solar power. It continues until the battery becomes 40% power. After that solar inverter switches ON the KSEB power.



Bidirectional solar PCU Hybrid inverter (Solar/ Grid/BATT) Vector Modulated Inverter Control Multiple DSP control operation Range 5KW to 100KW Battery Less operation compatible Paralleling Compatibility MPPT Based Solar Charger -2 modes of operations Higher Capacity PV connection option available Multi Mode function: SGB/ SBG/GFM (selectable) SBG Modes a?]



Enter 13 digit consumer number and available shade free rooftop area to find the best solar plant capacity based on your connection. 13 digit consumer number. Track my application. Monitored and Managed by Soura PMU, KSEB Ltd. Apply now! avail subsidy and many other benefits.. a?c Environment friendly and sustainable power generation a?c 5



The Ministry of New and Renewable Energy (MNRE) aims to set up 38 GW of rooftop solar PV projects in the second phase of its ambitious grid-connected rooftop solar photovoltaic programme. In line with the phase II subsidy program of MNRE and with the approval of state government, KSEB initiates a subsidy program for their domestic consumers.



5.4 The Hybrid inverter shall include appropriate self-protective and self-diagnostic feature to protect itself and the PV array from damage in the event of inverter component failure or from parameters beyond the inverter's safe operating range due to internal or external causes. 5.5 The Hybrid Inverters from 2kW to 100kW will be empanelled.



The Kerala State Electricity Board (KSEB) has called for bids from solar developers to set up 100 MW of grid-connected rooftop and ground-mounted projects. The project is divided into four parts and has specific criteria for bidders. Learn more about the project and bidding requirements in this article.



By working with solar panels, the product can provide renewable and clean energy, which enables users to save energy costs, help the environment, and use unlimited resource of solar energy. Intelligent 3-phase grid-tied inverter to provide solar energy and make profits by selling power. Features; Models; Where to Buy; Downloads; Videos



BSS SOLAR - Price List for KSEB Soura Ph 2 Subsidy Programme with Polycrystalline Modules
SOURA SUBSIDY SCHEME -PRICE LIST with new GST rates- M/s BSS SOLAR Subsidy is calculated based on Module capacity/ Inverter capacity whichever is less. 3. Subsidy will be limited to MNRE benchmark rate. 4.MNRE Benchmark Cost for RTS plants - Rs.43000



The program was announced as a KSEB-financed rooftop solar system without any investment from the consumer side??a good number of consumers registered without understanding the terms and conditions. some inverter and module brands that were available at the initial stages of the project ceased supplies and after-sales services in between



I have a 3.2kw on grid system at home. In that system we use the 440w half cut monoperc panels from Loom solar and inverter from Luminous. The net meter and solar meter is from Genus power and all the breakers are from havells. The whole system cost me about 2 lakhs including the installation tress work and fee to the KSEB.



Solar panels must be ALMM approved, and Solar Inverters must be BIS approved to qualify for subsidies. To determine the feasibility of installing a solar power system for your home or commercial shop from KSEB, they will assess how much solar capacity is already connected to the transformer that serves your electrical connection. According



KSEB Power Condition in Kochi, Kerala. If we talk about Kochi location, here is Kerala State Electricity Board (KSEB) power is very good. In case of power cut in rainy season, KSEB engineers fix grid power within 30 minutes. Similar to other states remote area location, there is no low voltage problem. Here is an average electricity bill of 2 months is Rs. 1,000 only.



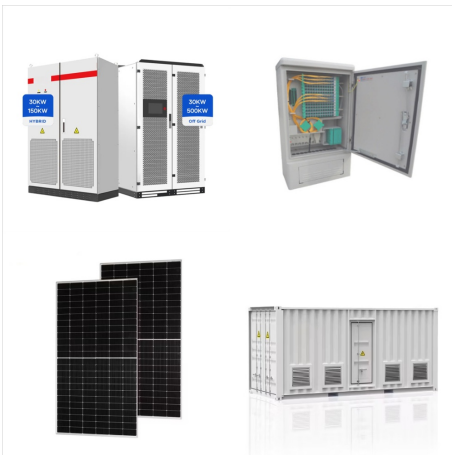
weighted average cost of the power purchased by KSEB Ltd including . 3 the cost of self-generation by KSEB Ltd, for the previous financial year as capacity of the solar PV system, the same shall be carried out by the distribution licensee, subject to the provisions in the Kerala Electricity Supply Code, amended from time to time.



ON GRID SOLAR PROJECT In an On-grid solar power generation system, solar projects are connected to the utility power grid (KSEB/BESCOM). The DC electricity produced by the solar panels are converted into AC power by Grid Tie or ON Grid Inverter, which is connected and synchronised to the utility power grid (KSEB/BESCOM).



KSERC (Renewable Energy & Net metering) Regulation, 2020 - Detailed procedure for connectivity, banking, Open Access, accounting and billing of Grid Interactive RE Systems HOT: KSERC (Renewable Energy & Net metering) Regulation, 2020 - Detailed procedure for connectivity, banking, Open Access, accounting and billing of Grid Interactive RE Systems.



KSEBL implemented the flagship project "SOURA "" to add 1000 MWp Solar Power Plants to the network of KSEB Ltd. Until September 2023, KSEBL added up 1230 MW capacity in the entire RE scenario where as 825 MW capacity is Inverter manufacturers meet: Leading inverter manufacturers were invited along with developers and other stake holders



Brought to you by MuscleGrid, this superior-quality solar inverter is one of the best solar inverters in India. This high-performance solar inverter comes with AI-based hybrid technology with 6 modes of power charging. Every solar-powered inverter by MuscleGrid can, therefore, be used in at least 6 ways as per the compatibility of the device.



The solar inverter must be BIS-certified. Also, the MNRE recommends that the applicant and the chosen vendor sign the model agreement which is designed to protect consumers' interests. Step 1 a?? Portal Registration: Register on the Solar Rooftop Portal a?? KSEB to Apply. Step 2 a?? Application: Select "Apply With Subsidy" or "Apply



The Kerala State Electricity Board Limited (KSEB) has released a list of approved installers for the engineering, procurement, and construction (EPC) of 200 megawatts of grid-connected residential rooftop solar systems in Kerala.



A solar inverter is really a converter, though the rules of physics say otherwise. A solar power inverter converts or inverts the direct current (DC) energy produced by a solar panel into Alternate Current (AC.) Most homes use AC rather than DC energy. DC energy is not safe to use in homes. If you run Direct Current (DC) directly to the house



Our customers who have switched to solar energy have zero charges as KSEB electricity bill after switching to solar energy. For the best solar panel, solar on-grid, solar off-grid, solar energy cost estimation, solar water heaters, solar lighting, and other services please give us a call @ 73562 13562 we are happy to help you 24 X 7.