



eVault Max 18.5kWh LFP Battery; Envy 12kW Inverter; Envy 8/10kW Inverter; Avalon High Voltage ESS; eForce 9.6 kWh LFP Battery; eFlex MAX 5.4kWh; eVault Max 18.5kWh LFP Battery; Envy 12kW Inverter; Envy 8/10kW Inverter; About Fortress Power. About Fortress Power; Contact Us; Where to Buy; Frequently Asked Questions;



The 10kWh 51.2V 200Ah Powerwall Lfp Battery from LeforEss is sufficiently large and non-inflated, with a long life of preferred branded cells, support for remote monitoring, and is also compatible with a range of inverters, allowing it to be ???



Store renewable energy for your home with LiFePO4 Powerwall The B-LFP48-100PW is a 5kWh lithium ion battery made for home use, which can be integrated into the photovoltaic system. With it, your solar system becomes flexible ???



LiFePo4 Powerwall UL1973. BSLBATT 10kWh
,???,??? BSLBATT 10kWh ???



The weight of the Powerwall 3 would indicate the same chemistry, LNMCM, coming in at just 130.18kg at 13.5kWh. The GivEnergy All in One, a 13.5kWh battery using LFP, comes in at a whopping 173kg. Meaning, even with an integrated inverter, the Powerwall 3 will be almost as energy dense as the Powerwall 2, which uses LNMCM.



The Applied Scope (Industry Solutions) with regard to Meritsun Powerwall 48V 200ah 10Kwh Lifepo4 Home Battery with Hybrid Off Grid Inverter ----- JYC has the proven solution. JYC already provides security and stable . to millions of ???



Discover the powerful 2 X 5.12KWH Powerwall LiFePO4 lithium battery SG48100M from SunGoldPower. Find reliable energy storage solutions for your home or business. Highlight:
 ???Character: The 51.2V 100AH LFP Battery is compact, well-designed, LCD, and cable/accessories ready for installation. ???7000 cycles deep cycle 10 years warranty, designed



BSL Powerwall ??? 51.2V/200Ah 10,24KWh PowerLine 10 Batteri i l  kkert ultratyndt design Dette batteri s  tter ny standard for l  ngde af garanti, og antal cycles det kan pr  stere. V  r den f  rste til at anmelde "Powerwall 10.24kWh Powerline BSL-B ???



bslbatt10kwh 48v? 1/4 ?lfp? 1/4 ?, ??? bslbatt ,,???



Since the rate hike was so great, I decided to modify the Powerwall usage from "Time-Based Control" to "Self-Powered". Since I have two batteries, they typically discharge down to ~70%, recharge and then contribute (credit account) to the grid with surplus. After a few days of clouds, it has gone down to 20% then slowly recharges.



Powering Your Home with the Tesla Powerwall 3 and LFP Technology. The Tesla Powerwall 3, with its advanced LFP battery chemistry, offers Australian homeowners a reliable, safe, and environmentally friendly solution for home energy storage. By storing excess solar energy during the day and using it during peak periods or outages, the Powerwall 3



Bisher sind keine spezifischen Preisinformationen für die Tesla Powerwall 3 bekannt. Es ist jedoch zu erwarten, dass der Preis in einem ähnlichen Bereich wie sein Vorgängermodell, der Powerwall 2, liegen könnte. ???



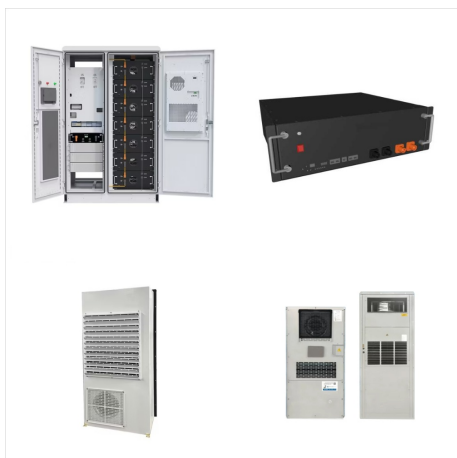
Tesla Powerwall 2 is a fully-integrated AC battery system for home residential or light commercial use. get Powerwall. and other potential hazards. Its lithium iron phosphate (LFP) chemistry also enhances safety compared to some ???



Wow, the Powerwall 3 sounds like a beast with that LFP setup! It's crazy how they manage to cram all that power into such a lightweight package. As for backing up the whole house, you can't go wrong with either choice. Both Powerwall 3 and FranklinWH seem solid, but it ultimately depends on your specific needs and budget.



All-in-One Solution. Integrated Solar Inverter: The Powerwall 3 combines the battery and solar inverter into one sleek unit on your wall, simplifying installation for those looking for a streamlined setup.. Cost-Competitive: Despite the added inverter, the Tesla Powerwall 3 is a competitively priced choice for a combined battery and inverter solution.



Previous Next B-LFP48-300PW | 10.24-307.2 kWh |
Low Voltage Battery 15 kWh Lithium Ion Battery
Solar Power Batteries For Home The BSLBATT
15kWh Solar Powerwall lithium battery is made from
BYD or Ningde LiFePO4, and with more than 6,000
charge cycles (over 10 years of daily use), your
home's electricity usage can be based on



Tesla has made the switch to LFP battery cells for
the Powerwall 3, offering improved safety, longevity,
and performance compared to the NMC cells used
in the Powerwall 2. Integrated Inverter. The Tesla
Powerwall 3 introduces an integrated solar inverter,
streamlining the installation process and reducing
the need for additional components:



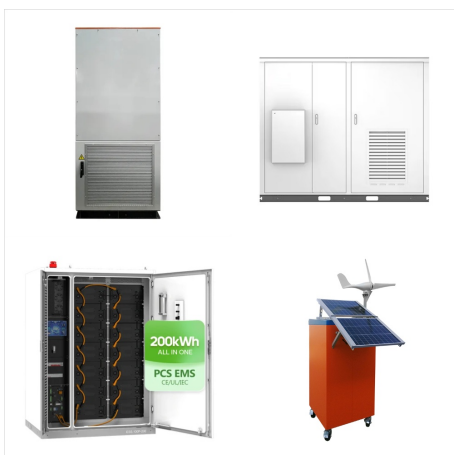
While its usable capacity (10.08 kWh) and
continuous power rating (3.84 kW) don't quite
match up to the Tesla Powerwall's ??? 13.5 kWh
and 5.0 kW ??? it does have a 6% higher round-trip
efficiency. 3. Fortress eVault Max (18.5 kWh) View
product. Fortress Power is a U.S. company
manufacturing domestic energy storage solutions
based on LFP



There's no information regarding pricing, but we expect the new generation to become more affordable thanks to using LFP cells. The Powerwall 2 sells for \$9,200 for a single unit, \$17,200 for two



Tesla Powerwall 2 is a fully-integrated AC battery system for home residential or light commercial use. get Powerwall. and other potential hazards. Its lithium iron phosphate (LFP) chemistry also enhances safety compared to some other lithium-ion chemistries. What warranty does Powerwall come with? Rubicon offers a 10-year warranty on Tesla



There has been speculation about Powerwall 3 for a long time but the discussion seems to be gaining some momentum as shown in the article below. well unless they will force battery purchase with solar. I think LFP, in ???



If you google around for info you'll see speculation that it's LFP, possibly same capacity but higher power output, slightly smaller form factor. I've decided to hang on for a month and see if anything happens, then make a decision. No. Powerwall 3 can be added to other Powerwall 3 batteries and cannot be added to Powerwall 2 or Powerwall+



LiFePo4 Powerwall UL1973. BSLBATT 10kWh ,???,??? BSLBATT 10kWh ,



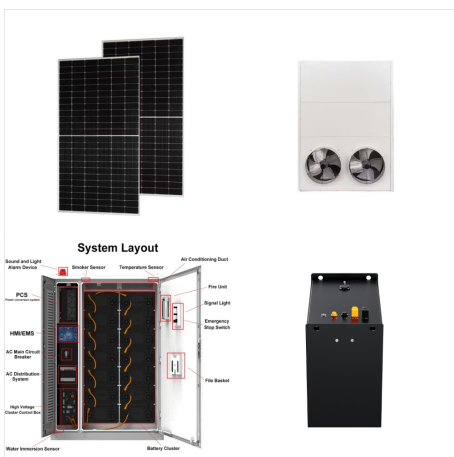
LFP-Powerwallbox, a Low-voltage lithium battery. With a scalable modular design, the capacity range can be expanded from 9.6kWh to 96kWh. The modules are connected by cable to support high-power work and are easy to install and maintain. Long life technology ensures more than 6000 cycles with 90% DOD. N Rated energy LFP-Powerwall box



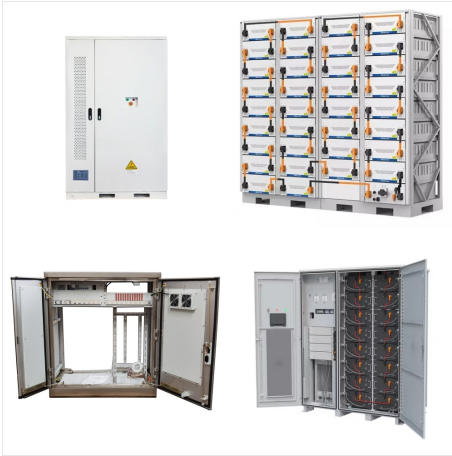
It guarantees better performance and longer life by using Lithium-Ferro-Phosphate (LFP) battery cells instead of the Lithium-Nickel-Manganese-Cobalt (NMC) cells found in Powerwall 2. LFP cells are easier to cool, safer, and boast a longer lifespan while being environmentally less impactful due to their extended lifespan and absence of cobalt.



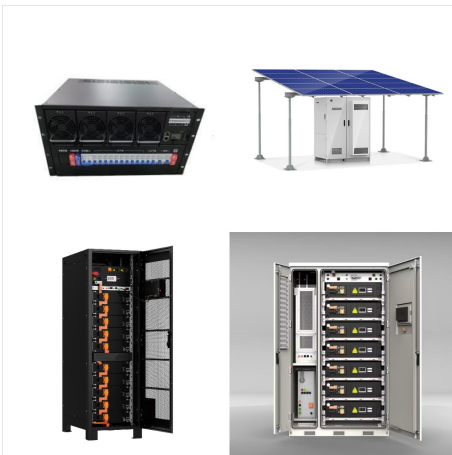
11.5kW,LFP? 1/4 ? ,TMC? 1/4 ?? 1/4
?andy92782,Powerwall 3,????



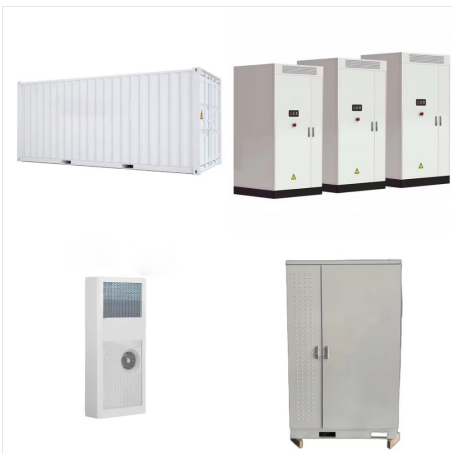
The upcoming DC Expansion unit is going to be \$1,000 cheaper than the Powerwall 3, which is listed at \$9,300 before incentives. In the webinar, Tesla also confirmed that Powerwall 3 is using LFP



Bisher sind keine spezifischen Preisinformationen für die Tesla Powerwall 3 bekannt. Es ist jedoch zu erwarten, dass der Preis in einem ähnlichen Bereich wie sein Vorgängermodell, der Powerwall 2, liegen könnte. Der Preis der Tesla Powerwall 2 lag, abhängig vom Markt und ohne Installation, typischerweise bei ca. 7000 Euro.



While its usable capacity (10.08 kWh) and continuous power rating (3.84 kW) don't quite match up to the Tesla Powerwall's 13.5 kWh and 5.0 kW it does have a 6% higher round-trip efficiency. 3. Fortress eVault



Despite its attraction as an emergency power device, Powerwall was designed from the ground up as a way for homeowners with onsite solar systems to extend the power they generate during daylight hours into the night. Model: 10 kWh