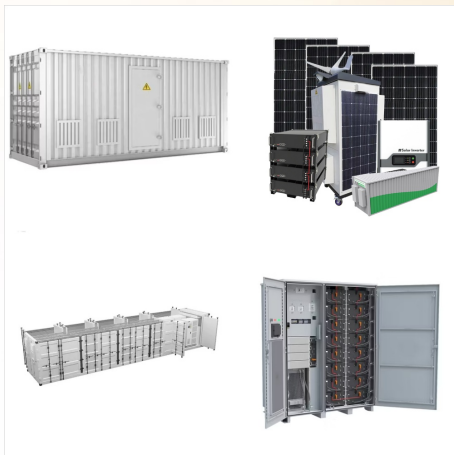




Increase rooftop solar deployment. Identify priority energy efficiency options and support counterparts to implement. Design a tariff-setting process, including utility data provision, public communication, stakeholder engagement, and ???



3 ? It reflects the strong partnership between the United States and Sri Lanka and demonstrates how thoughtful design can benefit both the environment and the community." Solar panels contribute to a 40% reduction in annual ???



3 ? It reflects the strong partnership between the United States and Sri Lanka and demonstrates how thoughtful design can benefit both the environment and the community."



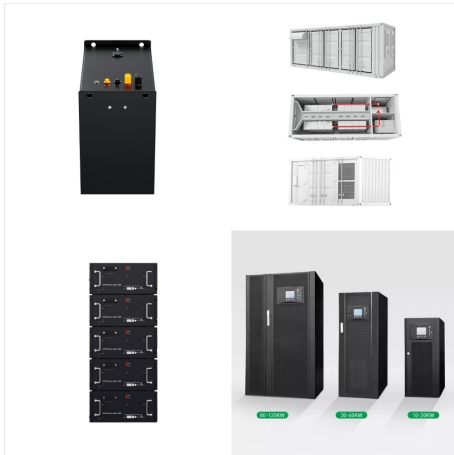
3 ? It reflects the strong partnership between the United States and Sri Lanka and demonstrates how thoughtful design can benefit both the environment and the community." PV System: Solar panels on roof of US Embassy ???



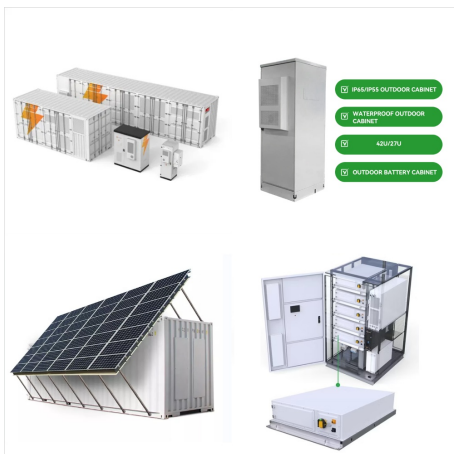
Ryse Energy recognizes that the growth of the energy sector in the nation is dependent on increasing the generation of renewable energy and will introduce their innovative, wind, solar, battery, and hybrid renewable energy systems to Sri Lanka imminently to decarbonize critical sectors and promote renewable, in-country energy sources.



Increase rooftop solar deployment. Identify priority energy efficiency options and support counterparts to implement. Design a tariff-setting process, including utility data provision, public communication, stakeholder engagement, and regulatory decisions.



Ryse Energy recognizes that the growth of the energy sector in the nation is dependent on increasing the generation of renewable energy and will introduce their innovative, wind, solar, battery, and hybrid renewable energy ???



The Sri Lanka Energy Program's local and international experts and partners will accelerate renewable energy adoption through promoting energy efficiency, strengthening the grid to accommodate increased renewable energy, ???



3 ? It reflects the strong partnership between the United States and Sri Lanka and demonstrates how thoughtful design can benefit both the environment and the community." Solar panels contribute to a 40% reduction in annual energy consumption. Solar panels on the roof of the U.S. Embassy warehouse and parking lot have a total capacity of 194.



3 ? It reflects the strong partnership between the United States and Sri Lanka and demonstrates how thoughtful design can benefit both the environment and the community." PV System: Solar panels on roof of US Embassy warehouse and parking lot having total capacity of 194.58 kWp. The system efficiently supplies power to the building's



The United States says switching to solar energy for e-mobility will reduce the burden on Sri Lanka's national grid. The US Ambassador to Sri Lanka Julie Chung said that switching to solar energy will help ease the economic burden of having to spend dollars on importing fuel for transportation and power generation.



The Island of Serendib - formerly Ceylon, now Sri Lanka - has become a leader in the developing world in the number of rural households powered by solar electricity. Over three thousand Sri ???



The award was given in recognition of the innovative solar-powered electric vehicle battery swapping stations owned and operated by Sri Lanka's Sling Mobility (Pvt.) Ltd., particularly highlighting the station located at ???



The United States says switching to solar energy for e-mobility will reduce the burden on Sri Lanka's national grid. The US Ambassador to Sri Lanka Julie Chung said that switching to solar energy will help ease the ???



The award was given in recognition of the innovative solar-powered electric vehicle battery swapping stations owned and operated by Sri Lanka's Sling Mobility (Pvt.) Ltd., particularly highlighting the station located at the Center for Women's Research in Colombo, which generates income to support the center's activities.





The Island of Serendib - formerly Ceylon, now Sri Lanka - has become a leader in the developing world in the number of rural households powered by solar electricity. Over three thousand Sri Lankan families now derive their electric service directly from the sun, using a ???