

Is the Lges 16h Prime a good battery?

While it may be one of the more cost effective batteries available on the market, it does not compromise on performance. With a high compatibility rating, sizable and usable storage capacities, and a good efficiency rating, the LGES 16H Prime appears to have it all. One of the only drawbacks of this battery is that it has limited modularity.

What is Lges Prime Plus?

LGES's Prime Plus isn't a new Prime battery. Rather, it's a new system configuration that offers more capacity flexibility and increases your battery's power output beyond the base level of an individual 10H or 16H Prime battery. A Prime Plus configuration connects two 10H or 16H Prime batteries together for a storage capacity of 19.2 or 32kWh.

How much does a Lges Prime battery cost?

In comparison to other similar batteries, LGES Prime batteries are much cheaper and are among the more affordable battery options we've come across. The 10H Prime typically costs somewhere between \$5,700 and \$8,500 before installation and the 16H Prime is about \$7,000 to \$11,000 before installation.

Does Lges Prime Plus have an inverter?

Prime Plus is the first residential energy storage system released by LGES in the US that includes an inverter. Both of LGES's other batteries, the 10H and 16H Prime, don't include inverters. This means you'll have to buy a separate compatible inverter. The new Prime Plus system is also designed for faster installation.

How many 10h & 16h Prime batteries can I install?

What you see is what you get. One 10H Prime battery has 9.6kWh, with one 16H Prime battery offering a bit more capacity at 16kWh. You can install one additional 10H or 16H Prime for an additional 19.2kWh to 32kWh. Keep in mind that you can't mix and match sizes. You can either install two 10H Primes or two 16H Primes.

What is a SHH inverter & LG Prime?

The combination of the SHH inverter and LG PRIME is well-suited for residential settings, providing backup options and reliable energy control. Thanks to the 4 MPPT, the performance of the PV system can be

maximized, regardless of the design of the roof and without additional need for optimizers.



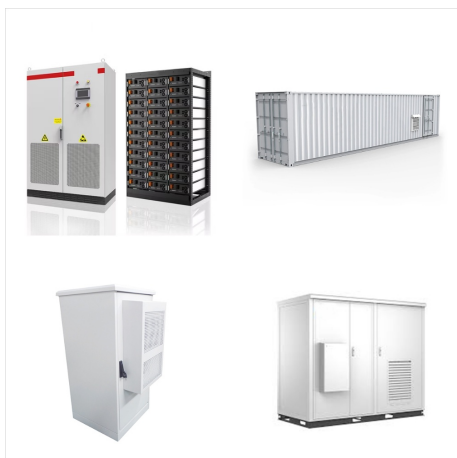
San Jose, Calif., Sept. 5, 2023 ??? LG Energy Solution (KRX: 373220), a leading global manufacturer of advanced lithium-ion batteries, announced today the upcoming launch of its new residential energy storage system, Prime+. For the first time in the U.S. market, the company is releasing an ESS that integrates an inverter and a battery system. Prime+ enables ???



16H Prime. Specifiche. Energia utilizzabile (kWh) 16. Peso (kg) 159. Dimensioni (W x H x D, mm) 504 x 1,086 x 295. Comunicazione. CAN & RS485. Grado di protezione degli involucri. IP55. Inverter compatibili. Lange Dauer & Energie Copia link . R1000 (17 Packs) / M48145P5B. Specifiche. Energia (kWh) 126.6.



16H Prime Specifiche del prodotto (1/2)
??>>Condizioni di prova ???Temperatura 77°F (25°C), all'inizio della vita ??>>L'energia? misurata in condizioni specifiche da LGES (0.3CPCV/0.3CP) ??>>Le specifiche del prodotto potrebbero cambiare senza preavviso 1) DOD 100%. Efficienza di carica (o scarica) del convertitore DC/DC 97.5%.



Best Price: LGES 16H Prime; Best Overall: Sunsynk L5.1; Best Capacity: Tesla Powerwall 2 . Are you ready to optimise your solar panel system by purchasing a solar battery? If you are still trying to figure out which solar ???



Key Specs Of The LGES 16H Prime. LGES 16H Prime: Category: Specs: Total storage capacity: 16.0kWh: Usable capacity: 16.0kWh: Operating window-20°C to 50°C: Depth of discharge: 100%: Dimensions: 504 ???



LG RESU16H Prime specifications. Below you will find the product specifications and the manual specifications of the LG RESU16H Prime. The LG RESU16H Prime is a battery designed for residential energy storage systems. It offers a high capacity and is suitable for use with renewable energy sources such as solar panels.



16H Prime REV 3.8. RESU16H Prime Product Specification (1/2) >>Test Conditions - Temperature 77°F (25°C), at the beginning of life >>Usable Energy is measured under specific condition from LGC(0.3CCCV/0.3CC) >>Product specification may change without notice 1) DOD 100%. DC/DC converter one way efficiency 97.5%.



LGES Prime Plus, 10H 16H Prime, Prime Plus, Prime Plus



Prime+ enables the parallel use of two 10H or 16H Prime battery modules for a total capacity of 19.2 or 32 kilowatt-hours. Installation is swift full commissioning of inverter and batteries takes just 10-15 minutes. LGES collaborated with multiple installers, deploying representatives of its sales and technical teams, to oversee the



LG Energy Solution (formerly LG Chem) RESU 16H Prime 400v Lithium Ion battery (3rd Generation) *LG Warranty Limitations Exist ***All Battery / Storage products purchased from BayWa r.e. have a limited 30 day return policy. ???



Caratteristiche principali. Il pacco batteria RESU16H Prime progettato per i sistemi fotovoltaici ? una soluzione di accumulo di energia facilmente adattabile.. La scelta pi? intelligente di prima batteria domestica per l'uso quotidiano, capacit? sufficiente per il backup di carichi critici durante le ore di punta e le emergenze; Design modulare unico, RESU Prime pu? essere suddiviso in ???



The Prime+ storage solution connects two 10H or 16H Prime battery modules in parallel to offer a capacity of 19.2-32kWh, with a maximum output of 9.6kW from the inverter. LGES is hosting pilot sites with installers across multiple locations in different parts of America ahead of the official launch to give them the opportunity for hands-on



The new Prime+ inverter enables the parallel use of two 10H or 16H Prime battery modules for a total capacity of 19.2 or 32 kWh. Installation is swift ??? full commissioning of inverter and batteries takes just 10 to 15 minutes. a Technical Sales Specialist with the LGES ESS Team in North America. "The installation process is faster than



LGES is hosting pilot sites with installers across multiple locations in different parts of America ahead of the official launch. The Prime+ storage solution connects two 10H or 16H Prime battery modules in parallel to offer a capacity of 19.2-32 kWh, with a maximum output of 9.6 kW from the inverter. The system has a modular architecture, and



RESU Prime 10H und 16H im Vergleich Wie aus der Vorg?ngergeneration vom RESU 10M bekannt, verf?gen die RESU Prime 10H und 16H ?ber ein modulares Design. Die gesamte Elektronik ist in der Kopfeinheit verbaut, die im Fehlerfall zeit- und kostensparend vor Ort ausgetauscht werden kann.



LGES is hosting pilot sites with installers across multiple locations in different parts of America ahead of the official launch. The Prime+ storage solution connects two 10H or 16H Prime battery modules in parallel to ???



Prime+ enables the parallel use of two 10H or 16H Prime battery modules for a total capacity of 19.2 or 32 kilowatt-hours. Installation is swift ??? full commissioning of inverter and batteries takes just 10-15 minutes. LGES collaborated with multiple installers, deploying representatives of its sales and technical teams, to oversee the



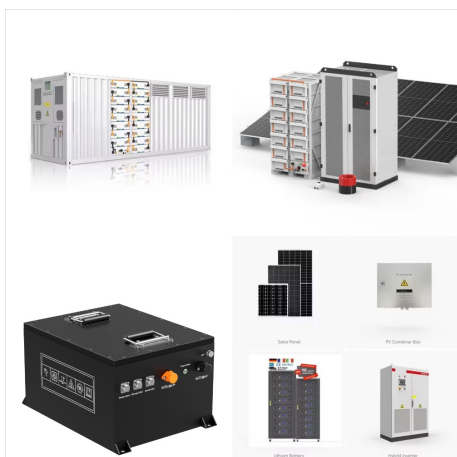
Battery Pack LG HBP 16H Installation Manual (25 pages) Battery Pack LG BLGRESU7H Installation Manual. Residential battery unit (144 pages) Only use the product with a LGES-authorized inverter. Heavy weight may cause serious back injuries For a list of compatible inverters, visit the LG ESS Battery Website by the URL below and check the



Ich weiss, es gibt schon den grossen LG 10H Thread aber der ist nicht explizit f?r die Prime Version die sich ja doch etwas anders verh?lt und auch technische Unterschiede aufweist. Bisher bin ich sehr zufrieden, die 10H Prime l?dt ja mit max 4,5 kW an meinem WT, und entl?dt auch mit 4,5kW. Ist aber eher eine Limitierung des Wechseltrichters.



Only use the product with a LGES-authorized inverter. For a list of compatible inverters, visit the LG ESS Battery Website by the URL RESU16H Prime Part Number EH257064P8S1 Width 504 mm (19.8") Height 1,086 mm (42.8") Depth 295 mm (11.6") Weight 1) 159 kg (351 lbs)



EH257064P8S8_LG Energy Solution Enblock Prime 16H battery storage EH257064P8S8. Datenblatt LGES Enblock Prime 16H ; Datasheet LGES Enblock Prime ; Warranty Conditions LGES Enblock Prime ; ???8,540.20 . plus shipping costs. Delivery time: in stock (2-5 working days) (abroad may vary)



Prime+ is the first residential energy storage system including an inverter that LGES will launch in the North American market under its own brand name. The Prime+ storage solution connects two 10H or 16H Prime battery modules in parallel to offer a capacity of 19.2-32kWh, with a maximum output of 9.6kW from the inverter.



The LG Chem RESU16H Prime is a 16 kWh home battery for daily cycle use that re-charges with electricity generated from PV solar panels or utility grid. The LG Chem Home Battery can provide safe power on-demand, or reliable backup if ???