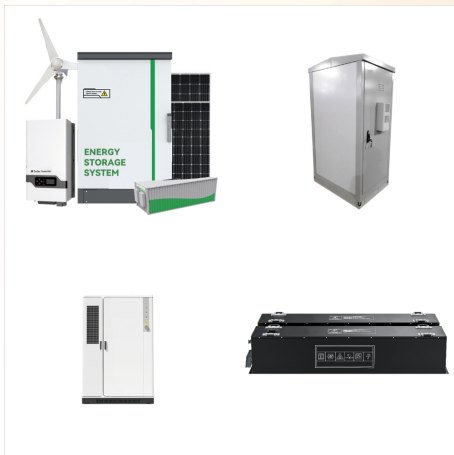




Each LG NeON2 LG315N1C-G4 solar panel is finally simulated for output performance and classified accordingly before completion. Review for the latest 315 watt premium LG NeON-2 PV modules with Cello bus and black frame.



The LG NeON 2 maximizes solar power system capacity, producing increased electricity and greater customer savings. LG NeON 2 offers solid performance even on cloudy days due to its low energy reduction in weak sunlight. Different solar panels, PV mount & inverter available at low wholesale prices.



LG's NeON (R) 2 Black solar panels create a solar power system that is aesthetically pleasing at the same time helping to reduce energy cost. These high efficiency solar panels are back by a 25 year warranty.



LG Solar's NeON(R) 2 BiFacial solar panels feature a double-sided cell structure with emitters on both sides. The panels have glass on the front side and a transparent EVA backsheet on the back. This improves light absorption and improves energy generation, increasing ROI.



LG NeON 2 Solar Panels Review. LG's NeON solar panel is one of the most efficient commonly available 60-cell modules on the market. LG considers the fact that the amount of energy generated by solar panels differs from day to day due to factors such as weather, temperature, and shading.



LG is releasing updated versions of its NeON 2 panels to the U.S. market next month. The new series of NeON 2 60-cell modules can reach 365 W and 21.1% efficiency. The first edition of the NeON 2 line reached 350 W and 20.7% efficiency.