



LG LG360Q1C-A5 360 Watt Monocrystalline Solar Module with Black Frame. This item ships by truck freight only. If you have any questions or concerns about freight shipping, please email us or give us a call at (800) 383-0195.. LG solar panels are known for durability, performance, efficiency, and high power output.



The LG NeON??? R LG360Q1C-A5 solar panel is a high-power luxury module designed to deliver long-lasting power, efficiency and reliability.. This LG 360 W NeON R solar panel uses a state-of-the-art solar cell structure without electrodes on the front. LG maximized the utilization of light and enhanced this solar panel's reliability to new heights with their revolutionary cell design.



Low wholesale price on this 9.36kw grid-tied LG NeON R solar panel system w/ SolarEdge inverter and choice of mount. Authorized LG Solar supplier. 26 LG NeON R LG360S1C-A5 360 watt solar panels; SolarEdge HD Wave SE7600H-US ???

# LG SOLAR 360 WATTS INVERTER



The LG NeON(R) 2 60Cells 360-370 is a high-performance solar module designed by LG to meet the energy needs of residential and commercial customers. With advanced cell technology, this module boasts an impressive energy output of up to 370 watts, making it one of the most efficient modules on the market. The LG NeON(R) 2 [???



Solar companies Solar panels Solar inverters Solar batteries. Guides. LG Solar. i. Model # LG335N1K-V5. 4.79 930 Reviews. Best unit price \$320.00 360 watts. Efficiency. 22.2. Number of Cells. 96. Cell type. Monocrystalline. Manufactured. US. Prices and Specs SunPower. i. Model # SPR-E20-327-D-AC.



Low wholesale price on this 7.2kw LG NeON R solar panel system w/ SolarEdge inverter and choice of mount. Authorized LG Solar supplier. 20 LG NeON R LG360S1C-A5 360 watt solar panels; SolarEdge HD Wave SE6000H-US inverter w/ optimizers; Prosolar Rooftrac,



Solar companies Solar panels Solar inverters Solar batteries. Guides. LG Solar. i. Model # LG335N1K-V5. 4.79 930 Reviews. Best unit price \$320.00 360 watts. Efficiency. 22.2. Number of Cells. 96. Cell type. Monocrystalline. Manufactured. US. Prices and Specs SunPower. i. Model # SPR-E20-327-D-AC.



Get information on the LG 370W High Efficiency LG NeON(R) 2 Solar Panel for Home with 60 Cells (6 x 10), Module Efficiency: 20.4%, Connector Type: MC4. Find pictures, reviews, and tech specs for the LG LG370N1C-A6. To properly experience our LG website, you will need to use an alternate browser or upgrade to a newer version of internet



Livguard i2-Verter LG 700 Square Wave Inverter best price is Rs. 5,661 as on 23rd October 2024. See full specifications, expert reviews, user ratings, and more. Microtek M-Sun 935 Solar Power Inverter ??? 5,399. Compare; Luminous Eco Watt 650i Square Wave Inverter



? Livguard i2-Verter LG 900 Square Wave Inverter  
best price is Rs. 5,717 as on 7th November 2024.  
See full specifications, expert reviews, user ratings,  
and more. Microtek M-Sun 935 Solar Power  
Inverter ??? 5,399. Compare; ???

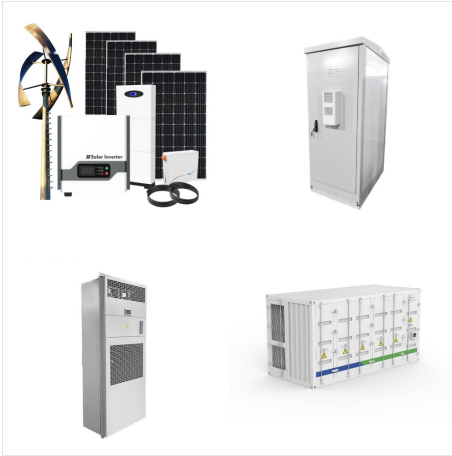


Offering industry-level warranty programs, LG ensures quality, durability and reliability of its solar panels. For the latest solar panel models, LG is now providing a 25-year product warranty which is among the best in the industry. This shows LG's confidence in developing highly-efficient, innovative and outstanding products.



High-Watt Systems LG Solar - 340 watts x 24  
panels = 8,160 watts or a 8.16kW System  
Panasonic Solar - 340 watts x 24 panels = 8,160  
watts or a 8.16kW System AC Systems LG Solar -  
375 watts x 22 panels = 8,250 watts or a 8.25kW  
System Panasonic Solar - 330 watts x 24 = 7,920  
watts or a 7.92kW System Both high watt systems  
will use a SolarEdge

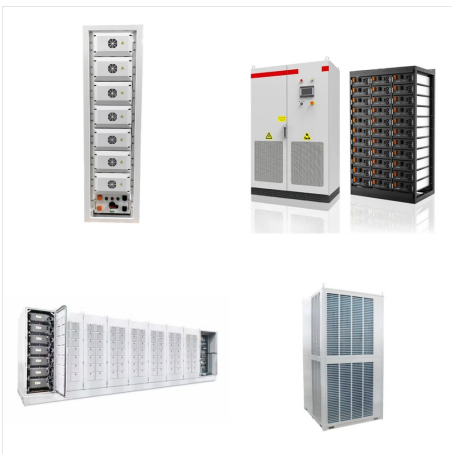




LG Solar Panels. In order to maximise the power output, SolarBright designed the solar system with panels that have one of the highest output per square metre ??? the LG NeON(R) 2 360 Watt solar panel. The system features 36 panels with a system size of 12.96kW and will produce over 18,600kWh of power per year.



This research leading to modern LG solar panel technology was supported by LG Group's rich experience in the semi-conductor, LCD, chemistry and materials industry. LG released the first Mono X series solar panels to the market in 2010. LG Mono X solar panels were exported to 32 countries in the following 2 years thereafter.



Up to 6% cash back? Get information on the LG 360W High Efficiency LG NeON(R) 2 Solar Panel for Home with 60 Cells (6 x 10), Module Efficiency: 19.9%, Connector Type: MC4. Find ???