



China. Description. Compatible with OLYMPUS Li-40B/Li-42B Battery. 3.7V/1250mAh/4.6Wh. Battery type: Lithium Ion. Integrated microchip prevents overcharging & lengthens battery life. Premium cells and high grade casings. 1 Year Hong Kong warranty. US\$2,000,000 Product Liabilities Coverage.



I69491, POWERSMART, Olympus Li-40B/42B Replacement Battery, FUJI NP-45/Nikon EN-EL10/D-Li108/Casio NP-80/Leica BP-DC17, Compatible with OLYMPUS Li-40B/Li-42B Battery 3.7V/1250mAh/4.6Wh Battery type: Lithium Ion. Integrated microchip



The Olympus LI-42B Rechargeable Lithium-Ion Battery is an ideal spare or replacement for your original battery. It delivers 3.7V of output power with a capacity of 700mAh and an energy rating of 2.738Wh.



., /., :3.7V, :700mAh, KINGMA Olympus LI-42B /  
Nikon EN-EL10 Lithium-Ion Battery Pack  
(3.7V,700mAh) ,???????,



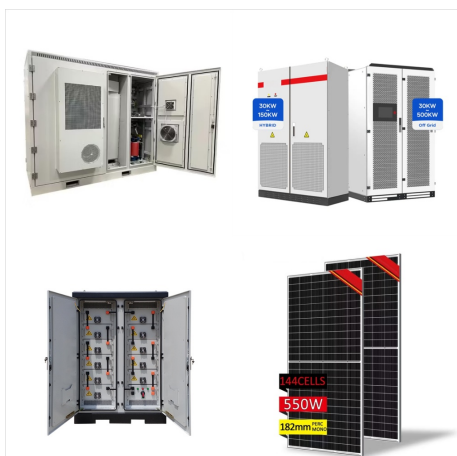
The extremely compact and ultra-slim design of the  
LI-42B rechargeable Li-Ion battery makes storage  
and transportation very convenient. With a capacity  
of 740mAh, the new Li-Ion battery allows hundreds  
of images to be shot before the battery needs to be



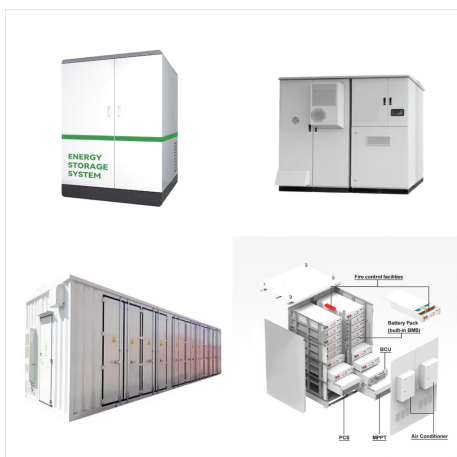
Power many Olympus digital cameras with this  
LI-42B Rechargeable Lithium-Ion Battery, which  
serves as a spare or replacement for your original. It  
features 3.7V of output power, a 700mAh capacity,  
and an energy consumption rate of 2.738Wh.



LI-42B Lithium Ion Rechargeable Battery From the Manufacturer The extremely compact and ultra-slim design of the Li-40B rechargeable battery makes storage and transportation convenient. With a capacity of 660mAh, the new Li-Ion battery for the IR-300 and



Overview: The Olympus LI-42B Lithium-Ion rechargeable battery pack is designed for use with select Olympus FE- and Stylus-series cameras. Charging: When using the Olympus LI-40C charger, the battery can be fully charged in approximately 4 to 5 hours.



A Li 42B Battery Olympus is a rechargeable lithium-ion battery that is specifically designed for use in Olympus cameras. It has a capacity of 1120mAh and a voltage of 7.2V. Why do I need a Li 42B Battery Olympus? If you own an Olympus camera, you need a