

How to store lithium ion batteries safely?

1. Storing Lithium Ion Batteries at The Right Temperature. The typical lithium ion battery storage temperature range of a home or storage unit is usually storing lithium batteries safely. The range of safe storage temperatures is wide, as shown in the chart below. However, issues like decreased battery lifespan occur in extreme weather conditions.

What temperature should a lithium battery be stored?

Proper storage of lithium batteries is crucial for preserving their performance and extending their lifespan. When not in use, experts recommend storing lithium batteries within a temperature range of  $-20^{\circ}\text{C}$  to  $25^{\circ}\text{C}$  ( $-4^{\circ}\text{F}$  to  $77^{\circ}\text{F}$ ). Storing batteries within this range helps maintain their capacity and minimizes self-discharge rates.

How long does a lithium ion battery last?

perature range is  $0^{\circ}\text{C}$  to  $30^{\circ}\text{C}$  ( $32^{\circ}\text{F}$  to  $86^{\circ}\text{F}$ ). At this storage temperature range, the battery will require a maintenance charge within a nine (9) to twelve (12) month period. A detailed maintenance charge schedule, based on storage temperature, is located at the end of this white paper. Lithium Ion rechargeable batteries should

Why should lithium batteries be protected during winter storage?

Protecting lithium batteries against extreme temperatures during winter storage is crucial for maintaining their performance and longevity. Cold temperatures can negatively impact the battery chemistry and overall functionality, while exposure to high temperatures can accelerate battery degradation.

What temperature should a battery be stored at?

ed batteries is  $-20^{\circ}\text{C}$  to  $+60^{\circ}\text{C}$  ( $-4^{\circ}\text{F}$  to  $140^{\circ}\text{F}$ ). The recommended storage temperature range is  $0^{\circ}\text{C}$  to  $30^{\circ}\text{C}$  ( $32^{\circ}\text{F}$  to  $86^{\circ}\text{F}$ ). At this storage temperature range, the battery will require a maintenance charge within a nine (9) to twelve (12) month period. A detailed maintenance charge schedule, based on storage temperature,

Can you store lithium ion batteries in the UK?

# LI ION BATTERY STORAGE TEMPERATURE GRENADA



The UK doesn't have specific regulations or legislation for the general storage of lithium-ion batteries. The Health and Safety Executive has, however, published guidance on good practices for handling and storing batteries, even though it is not compulsory. Regulations are not prescriptive but instead follow the typical routes:



The recommended storage temperature range is 0°C to 30°C (32°F to 86°F). At this storage temperature range, the battery will require a maintenance charge within a nine (9) to twelve ???



Temperature control: Batteries can be used at temperatures between -20°C to 60°C, but it's important to avoid reaching temperatures at the end of those ranges. Ventilation systems: Disperse hot air and keep closed to prevent fumes in case of a fire .

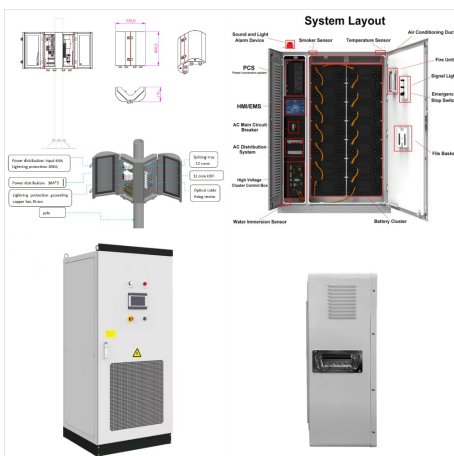
# LI ION BATTERY STORAGE TEMPERATURE GRENADA



The ideal temperature range for lithium batteries is typically between 20°C and 25°C (68°F and 77°F). Avoid storing them in areas where the temperature can drop below freezing point. 5. Use Proper Packaging: If you're ???



Safe storage temperatures range from 32°F (0°C) to 104°F (40°C). Meanwhile, safe charging temperatures are similar but slightly different, ranging from 32°F (0°C) to 113°F (45°C). While those are safe ambient air temperatures, the internal temperature of a lithium-ion battery is safe at ranges from -4°F (-20°C) to 140°F (60°C).



Temperature control: Batteries can be used at temperatures between -20°C to 60°C, but it's important to avoid reaching temperatures at the end of those ranges. Ventilation systems: Disperse hot air and keep closed to prevent fumes in ???

# LI ION BATTERY STORAGE TEMPERATURE GRENADA



The ideal temperature range for lithium battery storage is 20°C to 25°C (68°F to 77°F). This temperature range helps to maintain the battery's chemical stability and avoids rapid aging. Avoid exposing batteries to direct sunlight or storing them near heat sources.



In this comprehensive guide, we will explore the importance of temperature range for lithium batteries, the optimal operating temperature range, the effects of extreme temperatures, storage temperature recommendations, and temperature management strategies.

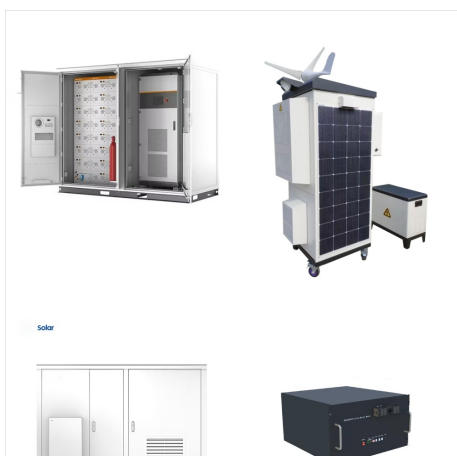


The recommended storage temperature range is 0°C to 30°C (32°F to 86°F). At this storage temperature range, the battery will require a maintenance charge within a nine (9) to twelve (12) month period.

# LI ION BATTERY STORAGE TEMPERATURE GRENADA



In this comprehensive guide, we will explore the importance of temperature range for lithium batteries, the optimal operating temperature range, the effects of extreme temperatures, storage temperature recommendations, ???



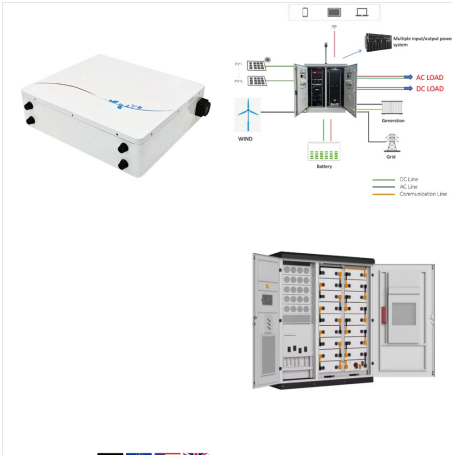
However, if you follow these best practices, you should be able to extend your lithium-ion battery's lifespan and ensure safe handling. 1. Storing Lithium Ion Batteries at The Right Temperature. The typical lithium ion battery storage temperature range of a home or storage unit is usually storing lithium batteries safely.



The ideal temperature range for a lithium battery pack in storage is between 35 to 90 degrees Fahrenheit. No matter where the ambient temperature of your storage area falls within that range, you should try to keep that temperature as consistent as possible.



# LI ION BATTERY STORAGE TEMPERATURE GRENADA



The ideal temperature range for a lithium battery pack in storage is between 35 to 90 degrees Fahrenheit. No matter where the ambient temperature of your storage area falls within that range, you should try to keep ???

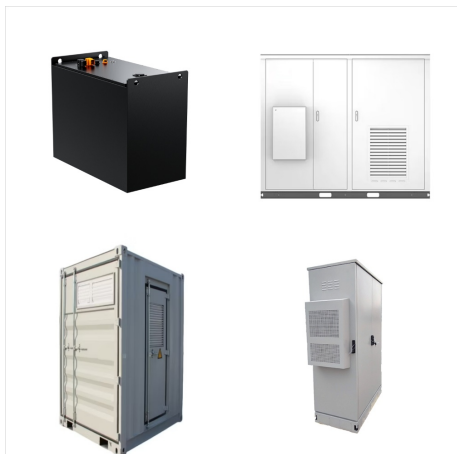


Extreme temperatures, both hot and cold, can affect the battery's performance. Ideally, the storage temperature should be between 20°C (68°F) and 25°C (77°F). Avoid exposing batteries to direct sunlight and keep them away from heaters ???



The optimum storage temperature for lithium-ion batteries is 10C (50F). The higher the temperature at which your lithium-ion battery is stored, the more quickly it will self-discharge. In most instances, temperatures below freezing won't significantly damage lithium-ion batteries as they don't contain water.

# LI ION BATTERY STORAGE TEMPERATURE GRENADA



Extreme temperatures, both hot and cold, can affect the battery's performance. Ideally, the storage temperature should be between 20°C (68°F) and 25°C (77°F). Avoid exposing batteries to direct sunlight and keep them away from heaters or radiators.



The ideal temperature range for lithium batteries is typically between 20°C and 25°C (68°F and 77°F). Avoid storing them in areas where the temperature can drop below freezing point. 5. Use Proper Packaging: If you're storing loose lithium batteries, place them in a secure and non-conductive container or individual battery storage cases



The optimum storage temperature for lithium-ion batteries is 10C (50F). The higher the temperature at which your lithium-ion battery is stored, the more quickly it will self-discharge. In most instances, temperatures below ???

# LI ION BATTERY STORAGE TEMPERATURE GRENADA



The ideal temperature range for lithium battery storage is 20°C to 25°C (68°F to 77°F). This temperature range helps to maintain the battery's chemical stability and avoids rapid aging. Avoid exposing batteries to direct ???