

What is Pixii Powershaper XD?

The Pixii PowerShaper XD, is a fully integrated IP55 modular energy storage system designed for easy deployment, high energy density, low noise stand alone or grid connected power. Utilising Pixii Energy Architect (EMS).

Why did Pixii launch the Powershaper XL?

"The launch of the PowerShaper XL family is a milestone for Pixii as it strengthens our offering in an ever-changing energy market. The PowerShaper XL extends the modular and scalable Pixii concept into a new larger package. It is designed for transportation with batteries installed, designed for convenient logistics and installation.

What is the warranty on the Pixii Powershaper?

Outdoor use, IP55, ventilated cabinet. Warranty extension (paid) up to 10 years. Prices on request. The Pixii Powershaper hybrid storage solution is unique on the market and allows a wide range of applications (optimization of self-consumption, anti-black-out, micro-grid, off-grid).



Beyond reducing energy costs, Pixii's solutions enable building owners to generate new revenue streams through EV charging and participating in electricity markets. By reducing the need for expensive grid upgrades, Pixii's technology addresses grid ???



The Pixii PowerShaper BESS and TGN Grid have transformed Meny's approach to energy management. With peak shaving capabilities, the system efficiently manages energy consumption during high-demand periods, thus reducing costs and alleviating pressure on the local grid. The system's automated and AI-driven functionalities ensure optimal use



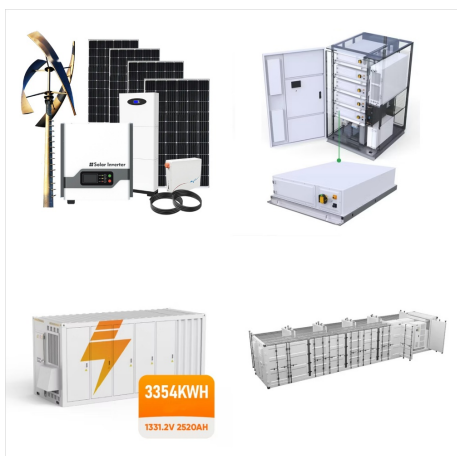
Pixii is happy to announce that Rexel will distribute Pixii's products in Sweden, a key market for Pixii's smart energy storage solutions. Together with its installation customers, Rexel will target commercial and ???



As a Norwegian company, Pixii takes pride in adhering to the highest standards of quality and security. Our robust approach to product development, manufacturing, and maintenance integrates multi-layered security protocols, well-documented product specifications, component-level traceability, online yield monitoring during production, stringent testing ???



Pixii is happy to announce that Rexel will distribute Pixii's products in Sweden, a key market for Pixii's smart energy storage solutions. Together with its installation customers, Rexel will target commercial and public property owners and industries with Pixii PowerShaper cabinets as well as the residential market with the newly launched



The new Brisbane office is an addition to Pixii's existing presence in Sydney and reflects our commitment to extending the reach across Australia. The strategic decision to expand in Brisbane was motivated by Pixii's increasing growth in the country and the unique suitability of its distributed BESS solutions for the Australian energy



This document describes the step by step commissioning of Pixii Home energy storage system. Empty space, drag to resize. 03.09.2024 Rev. 2.0. Open document. PowerShaper XL Indoor. PowerBase. PowerBase XL. Pixii Home. PowerShaper - Residential. PixiiBox. Services & Support. Documents and downloads. Piixii Academy. Partner program. ???



Pixii's compact BESS is fully integrated, enabling you to get the most out of new or existing solar installations, maximizing self-consumption. PowerShaper ??? Residential. PowerShaper Indoor. PixiiBox. All products. Case studies. CASE: EV charging. Charging ahead ??? Milence and Pixii's solution for E-truck charging.



PowerShaper ??? Residential. Pixii Home. Bulding blocks. PixiiBox. Batteries. Related markets. Residential. Store energy from the sun and become more energy independent. How does it work? With cutting-edge technology, the Pixii modular energy storage solution gives you a wide range of functions, allowing you to unleash your growth potential



ENGIE's first battery storage system in Slovakia, utilizing Pixii's PowerShaper technology, began operations in January 2024. This BESS is integral to ENGIE's multi-phase project, enhancing grid stability, supporting renewable energy integration, and laying the groundwork for future energy flexibility services in Slovakia.

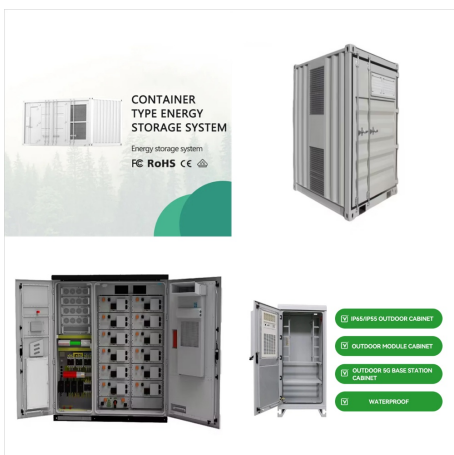




The Pixii Academy is an online support portal designed to help partners and installers educate themselves on the latest in Pixii's modular BESS technologies. This specialized online course on the physical installation of PowerShaper XL systems is designed for installers, aggregators, and other business partners. The program provides



As part of our commitment to support India's renewable energy goals, Pixii has opened a new office in New Delhi. This marks an exciting new chapter in our global journey, as we help drive the energy transition in one of the world's ???



Under the Norwegian DSO Research regulation, Lede can leverage the Pixii PowerShaper's capabilities to be ready for participation in the Nordic Fast Frequency Reserves (FFR) and Frequency Containment Reserves (FCR) markets. Although the system is not yet actively participating, this readiness opens up potential future revenue streams, marking



The PowerBase XL is a high-capacity energy storage system supporting up to 9 PowerShaper XL cabinets, offering 530kW of power and 1.8MWh of storage. Designed for quick deployment and cost efficiency, it leverages value stacking to combine energy savings with revenue-generating services like peak shaving and fast frequency support.



Merging Pixii's innovative energy storage solutions with Sparkion's advanced energy management goes beyond meeting industry demands; it sets a new standard for seamless, efficient, and environmentally responsible EV charging solutions"

Kenneth Bodahl, Chief Executive Officer of Pixii

Kenneth Bodahl, Chief Executive Officer of Pixii



The Pixii battery energy storage system is modular, easy to scale and quick to deploy. It comes with smart functionality, allowing you to reduce your energy costs, open new revenue streams, and get the most out of your PV installation Pixii PowerShaper XL family. Addressing more energy hungry applications with the PowerShaper XL family.



The PowerBase is a robust energy storage system built on a steel frame with the footprint of a standard ISO 20-foot container. Pre-wired and pre-configured, it minimizes installation costs and delivery time, accommodating up to 12 Pixii PowerShaper cabinets with a ???



Through this collaboration, Pixii's advanced battery storage system for households ??? Pixii Home ??? will be integrated with Greenely's services, enhancing the capacity of Greenely's Virtual Power Plant and offering customers a more energy-conscious solution.



The Pixii Home battery energy storage system is quick to install and easy to use, helping you get more out of your solar panels and reduce your dependency on the grid. Pixii Home is a compact, all-in-one solution that combines cost-saving and ???



The Pixii Academy is an online support portal designed to help partners and installers educate themselves on the latest in Pixii's modular BESS technologies. This specialized online course on the physical installation of PowerShaper ???



The PowerShaper Indoor is a modular and scalable energy storage solution designed for indoor applications. It delivers up to 50kW of power and 50kWh of LFP batteries, enabling cost-saving features like time shifting, peak shaving, and demand charge reduction. Pixii's BESS supports a dynamic value stack, maximizing cost savings while



Pixii's PowerShaper technology is modular, allowing it to grow to the community's needs. As more homes in Bondi adopt solar power and EV ownership rises, the system can be easily scaled to accommodate increasing energy demands, future-proofing Bondi's renewable infrastructure for years to come.





Pixii energy storage can operate with most battery modules designed for 48VDC and parallel operation and our systems are compatible with a wide range of battery brands and technologies. LFP batteries typically for more power oriented applications, with the lowest level of cobalt or nickel, and NMC batteries providing the highest level of energy



Pixii introduces the PowerShaper XD and Energy Architect EMS ??? innovative systems designed to tackle the unique challenges faced by energy integrators, installers, and solar companies in Australia. Diesel generators have long been a staple for backup power in the outback, but they come with drawbacks ??? noise, emissions, and ongoing fuel costs.



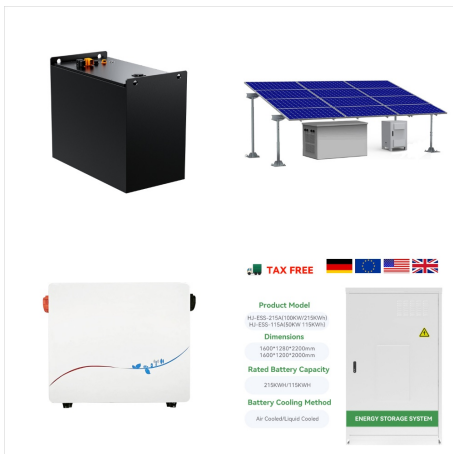
At Pixii, we have gained extensive experience implementing value stacking strategies through real-world installations. With numerous systems successfully up and running, we have fine-tuned our approach to maximize the value of every BESS. PowerShaper Indoor. Pixii Home. All products. Our software defined bi-directional converters makes all



The Pixii solution is fully integrated and comes with our user-friendly Pixii gateway web app, allowing for easy installation with minimal on-site work. Our team of engineers have combined their extensive expertise and knowledge of the market to create our revolutionary Pixii battery energy storage system.



The Pixii OEM Inverter kit is a rack mountable bi-directional inverter shelving kit that provides OEM manufacturers with a modular and scalable inverter, designed for use by manufacturers of small- and large-scale Battery Energy Storage Systems (BESS). PowerShaper PoleTop. Related markets. Commercial and industrial. Reduce energy cost and



Merging Pixii's innovative energy storage solutions with Sparkion's advanced energy management goes beyond meeting industry demands; it sets a new standard for seamless, efficient, and environmentally ???