

How much does a lithium car battery weigh?

But keep in mind Lithium isn't only for Performance Cars; it works great in passenger cars too! (Please check our Car Battery Fitment and Car Battery Installation pages for details). Weight: The ultralight Antigravity RE-START Batteries weigh from 8.5 lbs to 16 lbs (4-7 Kg) depending on the model.

Will antigravity make lithium-ion starter batteries available in high-end cars?

In recent years, some automakers have started to make lithium-ion starter batteries available in their vehicles, but the batteries have largely been limited to expensive optional offerings in high-end sports cars from companies like Porsche and McLaren. Antigravity wants to change that.

What is lithium ion battery technology?

From iPhones to Teslas, lithium-ion battery technology is ubiquitous in today's world. It's the chemistry of choice for a wide range of applications due to its high charge density relative to its mass, which in turn yields things like high-end laptops that can run for more than 10 hours on a single charge while weighing less than four pounds.

How much power does the antigravity lithium-ion battery have?

Power: The high cranking power of the Antigravity Lithium-Ion Battery can start Motors up to 900 Horsepower easily! Additionally for even more weight loss you can go with a smaller Amp Hour Battery if you want the lightest weight possible.

How much does a lithium ion battery cost?

Additionally, our Lithium-Ion battery is by far the most economical weight loss product on the market! A 30 lbs weight reduction in Carbon Fiber or Titanium would cost over \$50,000 dollars compared to roughly \$700-\$800 dollars for our Battery.

Does Porsche have a lithium-ion starter battery?

Bradley Iger In 2009, Porsche introduced a 12V lithium-ion starter battery as a \$1,700 option, but only on its lightweight cars, the 911 GT3, GT3 RS, and Boxster Spyder. Porsche On the left, the Antigravity lithium-ion battery.

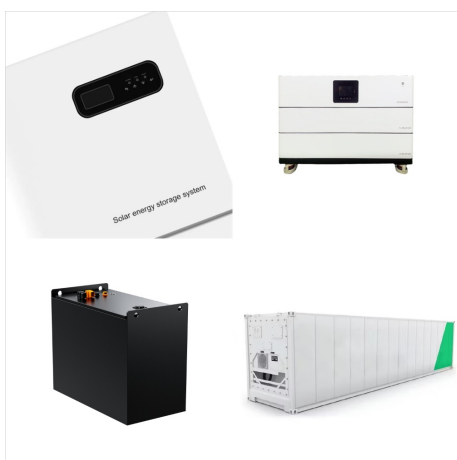
LIGHTWEIGHT LITHIUM ION CAR BATTERY



The NEW Antigravity RS-30 is an Intelligent, Hi-Power, Lightweight Lithium Car Battery with our exclusive RESTART Technology and FULL Management System built-in! Sign in close. Username or email * Password * Log in. We are the First Lithium-Ion Battery company to offer the most popular BCI Sizes of H5/Group 47, H6/Group 48,



H8/Group 49 OEM Automotive Case size (directly replace stock battery).; LxWxH: 14 x 7 x 7.5 inches.; Amp Hours: 60 Ah, or 80 Ah.; High Power: 60Ah=1800CA, 80Ah=~2000 Cranking Amps.; Exclusive RE-START Technology: Wireless Jump-Starting built-in; just press the button on your Keyfob remote.; Complete Battery Management System built-in.; Ultra Lightweight: Drop up to ???



Lightweight, Ultra-Safe Lithium-Ion Battery! Our Automotive batteries only weigh from 8 to 18lbs, and for race cars, you can use something much smaller as well, like out atx-20-HD with 900CA, which weighs only 5.18lbs!!! Save massive weight just swapping out your Lead/Acid Battery for our Lithium Battery. Built-in Wireless JUMP STARTING!

LIGHTWEIGHT LITHIUM ION CAR BATTERY



What Is A Lithium Ion Battery. Lithium Ion batteries are much different than a standard lead acid battery. Rather than relying on lead plates and sulfuric acid, these batteries use a different type of chemistry. Lithium ion batteries are typically constructed with lithium and carbon electrodes which means they're lightweight.



Drop serious weight with a Lightweight Lithium Battery. Exact drop in fitment paired with RE-START remote prevents ever getting stranded with a dead battery. FITMENT: H7/Group-94R battery size. 2009-2016 Porsche Boxster ???



One of the factors that make them a good bet for most bikers is the fact that the physical size of the battery is the same as a conventional battery, meaning it's a straight swap with no need for foam padding. You'll find this brand on Amazon, they make a wide range of lithium motorcycle batteries and they get good user ratings.

LIGHTWEIGHT LITHIUM ION CAR BATTERY



Antigravity offers lithium iron phosphate batteries that are lighter, safer, and more powerful than lead-acid batteries for various vehicles. Learn how they work, what benefits they ???



Group 26 OEM Automotive and UTV Case size (directly replace stock battery).; LxWxH: 7.75 x 6.5 x 7.24 inches.; Amp Hour Options: 16 Ah, or 20 Ah.; High Power: 16Ah=850CA, 20Ah=925 Cranking Amps.; Exclusive RE-START Technology: Wireless Jump-Starting built-in; just press the button on your Keyfob remote.; Complete Battery Management System built-in.; Ultra ???



Antigravity lightweight lithium batteries use the latest in Lithium-Ion technology for incredible weight savings over traditional lead-acid batteries! When you need a high-amperage punch but you can't afford to lug around a heavy battery, Antigravity is the answer. We offer two Antigravity lines that are suitable for use in just about any application with an on-board charging system:

LIGHTWEIGHT LITHIUM ION CAR BATTERY



Group-27 Battery NEW! Lightweight Lithium Batteries with Wireless Remote Built-In Jump Starting! The first Intelligent Lithium-Ion Automotive Battery that won't leave you stranded! Antigravity Batteries has changed the game again with our latest Lithium-Ion Car Batteries. The newest RE-START line of batteries offers built-in WIRELESS Jump



The ultra lightweight AG-401 battery, at a minuscule 4.375 x 1.37 x 3.75 inches (LxWxH to top of terminals), offers extreme power in the most compact size in Lithium Motorsport batteries. Ultra-Lightweight and High-Power Lithium-Ion Motorsport Battery. Most Compact of Lithium Motorsports Batteries available (great for racers and custom



Racelite Lithium Ion Race Car Batteries are dramatically lighter than old-fashioned lead batteries, and provide more bang per AMP than virtually any other race car battery on the market today! Find out why more drivers choose Racelite Lithium Ion Racing Batteries, your trusted source for lightweight, high-performance batteries.

LIGHTWEIGHT LITHIUM ION CAR BATTERY



Buy Enduro Power 12V Lithium Battery - 300Ah Lightweight LiFePO4 Deep Cycle Battery, 250A BMS 12 Volt Lithium Batteries for RV, Car, Camper, Off Grid, Golf Cart, Marine, and Trolling Motor: Batteries - Amazon FREE DELIVERY possible on eligible purchases



Buy XingCell PH5 12V BCI Group 47 LiFePO4 Lithium-ion Car Battery with Ultra-Long Cycle Life and Lightweight Design for Car Audio and Automotive Replacement Batteries: Batteries - Amazon FREE DELIVERY possible on eligible purchases. XingCell LiFePo4 Lithium-ion Car Batteries are the perfect combination of performance and value. They are



Here is my list of batteries: 1. AntiGravity Batteries RS-30 2. Super B SV12V25P-SC 3. Mighty Max ML100-12LI ??? 12V 100AH Deep Cycle Lithium Battery. The best lightweight car battery is one that will work even in adverse conditions.

LIGHTWEIGHT LITHIUM ION CAR BATTERY



Lightweight Battery Alternatives. Battery technology is evolving, and nowadays the price of good quality lithium-ion batteries is lower than in the past. Nevertheless, a lightweight car battery using advanced lithium-ion technology is still quite pricey, so you might want to consider other alternatives as well.

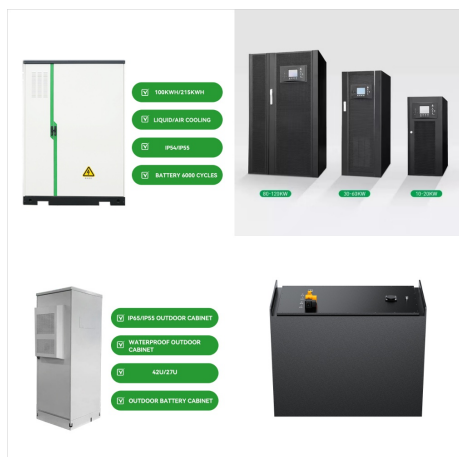


Feather-Lite Batteries are the ultimate Ultra Light-weight high performance battery. From Custom Design to Extreme Cranking amps, we offer the safest, Lightest, and Most powerful Lithium Ion Batteries on the market. All our batteries are tested in the toughest of conditions. Get your Today!

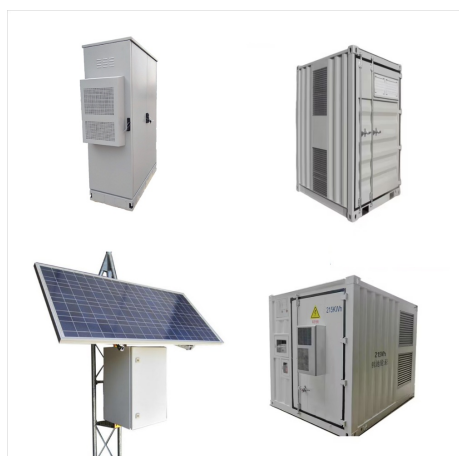


Find Batteries Lithium Car and Truck Battery Type and get Free Shipping on Orders Over \$109 at Summit Racing! Battery, 16 V Lithium Racing, Lithium-Ion, 16 Volt, 1,200 Max Amps, 206.25 Watt Hours, 900 Cranking Amps, 39 Amp Hours, 5.30 lbs, Each. Part Number: XSP-LI-S925-16.

LIGHTWEIGHT LITHIUM ION CAR BATTERY



Buy Enduro Power 12V Lithium Battery - 100Ah Lightweight LiFePO4 Deep Cycle Battery, 100A BMS 12 Volt Lithium Batteries for RV, Car, Camper, Off Grid, Marine, Golf Cart, and Trolling Motor: Batteries - Amazon FREE DELIVERY possible on eligible purchases lithium ion. lithium phosphate. lithium, lead acid. Brief content visible, double



Lightweight H7/Group-94R Lithium Car Battery with Built-In Wireless Jump Starting! Antigravity Batteries were the first lithium-ion battery company to offer popular BCI sizes, including the H5/Group 47, H6/Group 48, H7/Group 94R, Group 35, and others. These are the standard sizes for many European and American cars & trucks.



T6/L2 OEM Automotive Case size (directly replace stock battery).; LxWxH: 10.75 x 7 x 6.8 inches.; Amp Hour Options: 40 Ah, or 60 Ah.; High Power: 40Ah=1500CA, 60Ah=1800 Cranking Amps.; Exclusive RE-START Technology: Wireless Jump-Starting built-in; just press the button on your Keyfob remote.; Complete Battery Management System built-in.; Ultra Lightweight: Drop ???

LIGHTWEIGHT LITHIUM ION CAR BATTERY



Lithium ion car battery packs are a key component in enhancing vehicle performance. They provide a stable and consistent power supply, which is crucial for the smooth operation of modern vehicles. A lightweight lithium car battery transforms your drive in several ways: Enhanced Fuel Efficiency: Reduced weight leads to better fuel economy.



The days of heavy lead-acid batteries are behind us. Smart racers know that less weight means more speed. Racelite Lithium Ion Race Car Batteries offer you more bang per AMP than any other racing battery on the market today! Don't make a three second mistake - Racelite Lithium is your trusted source for lightweight, high-performance race car batteries.



Today, most electric cars run on some variant of a lithium-ion battery. Lithium is the third-lightest element in the periodic table and has a reactive outer electron, making its ions great energy

LIGHTWEIGHT LITHIUM ION CAR BATTERY



The Antigravity Batteries RE-START Car Batteries come in EXACT FIT OEM sizes for most all Performance and Passenger Cars. We are the First Lithium-Ion Battery company to offer the most popular BCI sizes including H5/Group 47, H6/Group 48, H7/Group 94R, Group 35 and others. These sizes are standard sizes in most every Hi-Performance European and



JUMP TO TOPIC. 1 The Evolution of Racing Batteries. 1.1 From Lead Acid to Lithium-Ion; 1.2 Advancements in Battery Management Systems; 2 Selecting the Right Racing Battery. 2.1 Understanding Capacity and Cranking Power; 2.2 Importance of Size, Weight, and Configuration; 2.3 Compatibility and Charging Considerations; 3 Maximizing Battery ???



Drop serious weight with a Lightweight Lithium Battery. Exact drop in fitment paired with RE-START remote prevents ever getting stranded with a dead battery. Antigravity H7/Group-94R Lightweight Lithium Car Battery \$ 949.99 ??? \$ 1,349.99. From their multi-award-winning MICRO-START jump-starters to our wide range of lightweight high