

What can Lincoln Electric do for You?

Lincoln Electric offers everything you need for your welding & cutting, filler metals, automation, weld fume control and safety & ppe needs. Members of the #WeldRedNation looking for apparel, accessories, drink ware, and more -- head to RedZone!

How many employees does Lincoln Electric have?

[4] Lincoln has over 8,500 employees globally, including 3,000 in the United States. In 2005, Lincoln's Electric acquired the Harris Products Group, which is a manufacturer of welding accessories, gas apparatus, and other specialty products. [5]

What products does Lincoln Electric offer?

Lincoln Electric offers everything you need for your welding & cutting, filler metals, automation, weld fume control and safety & ppe needs. View our product offerings below. Welders, training tools, fume control systems and other gear to promote quality and efficiency on the job site.

What is the best rated Lincoln Electric Welding Machine?

The best-rated product in Lincoln Electric Welding Machines is the 155 Amp Invertec V155-S Stick Welder, Single Phase, 120V/230V. What are the shipping options for Lincoln Electric Welding Machines? All Lincoln Electric Welding Machines can be shipped to you at home.

Does Lincoln Electric Holdings have a dividend?

Before making this announcement, Lincoln Electric Holdings was easily earning enough to cover the dividend. This means that most of what the business earns is being used to help it grow. The next year is set to see EPS grow by 30.3%.

Should you buy Lincoln Electric Holdings (Leh)?

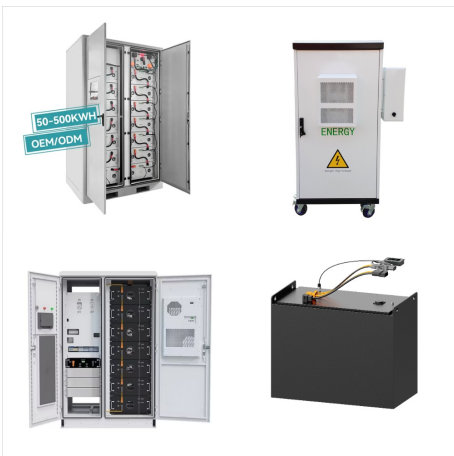
Rapidly growing dividends for a long time is a very valuable feature for an income stock. Investors could be attracted to the stock based on the quality of its payment history. It's encouraging to see that Lincoln Electric Holdings has been growing its earnings per share at 11% a year over the past five years.



System Integration Collaborate with Lincoln Electric to integrate an automated system or optimize efficiency with existing equipment. Tooling Reliable automated tooling and robotic welding fixturing solutions provide accuracy and repeatability for various applications. Automation Services.



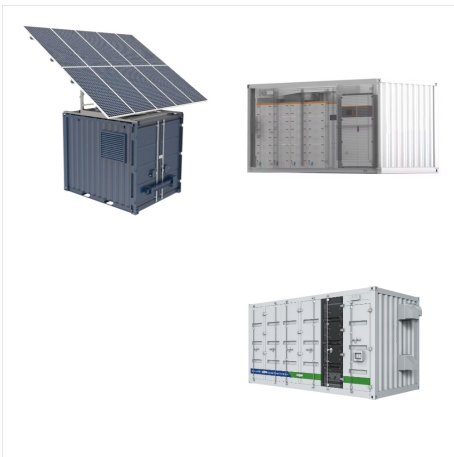
System Integration Collaborate with Lincoln Electric to integrate an automated system or optimize efficiency with existing equipment. Tooling Reliable automated tooling and robotic welding fixturing solutions provide accuracy and repeatability for various applications. Automation Services. Engineering Services; Advanced Manufacturing Services



Lincoln Electric was founded in Cleveland in 1895 with \$200, an invention, and a dream. John C. Lincoln wanted to manufacture his innovative electric motor and build a company where people worked by the golden rule.



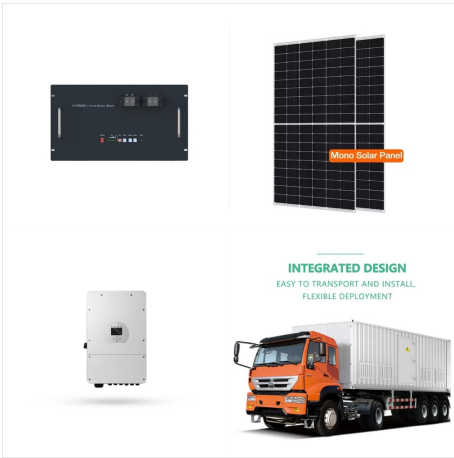
At Lincoln Electric, we operate to a higher standard to build a better world. We are the world leader in the design, development, and manufacture of arc welding products, automated joining, assembly and cutting systems, as well as plasma a?|



Standard Automation Products. Robotic Welding Systems From simple to advanced applications, these systems are designed to help decrease manufacturing costs, increase weld quality, improve welding productivity, and enhance your working environment.; Collaborative Robotic Systems Coopera?c welding cobots are automated welding solutions built to work safely alongside people.



System Integration Collaborate with Lincoln Electric to integrate an automated system or optimize efficiency with existing equipment. Tooling Reliable automated tooling and robotic welding fixturing solutions provide accuracy and repeatability for various applications. Automation Services. Engineering Services



System Integration Collaborate with Lincoln Electric to integrate an automated system or optimize efficiency with existing equipment. Tooling Reliable automated tooling and robotic welding fixturing solutions provide accuracy and repeatability for various applications. Automation Services. Engineering Services; Advanced Manufacturing Services



System Integration Collaborate with Lincoln Electric to integrate an automated system or optimize efficiency with existing equipment. Tooling Reliable automated tooling and robotic welding fixturing solutions provide accuracy and repeatability for various applications. Automation Services. Engineering Services



Lincoln Electric's Power Wave(R) advanced welding platform was built to perform a?? period. Resources, Product Info, Industry 4.0, Success Stories, Applications & more. Advanced Process Welding Equipment. New and Featured Equipment.



Lincoln Electric POWER MIG 215 MPI. The POWER MIG 215 MPI multi-process welder is a reliable, easy-to-use machine for the general fabricator, small contractor or repair personnel. The sleek design with multiple lift points maximizes mobility around the shop, and user-friendly technology makes the setup process and selection of weld settings



Lincoln Electric Additive Solutions gives your business a big advantage over castings, forgings, and other traditional manufacturing processes with the fast delivery of new and replacement parts and tooling. With the largest 3D metal printing capacity in North America, we can expedite production for large industrial parts for your application



Lincoln Electric was founded on December 5, 1895, in Cleveland, Ohio, U.S.A. An initial \$200 investment was used to develop and commercialize a unique, direct current electric motor for industrial applications. What started as a spark of ingenuity flickered and gained momentum. By 1911, John C. and James F. Lincoln invented and launched their



Lincoln Electric is excited to announce the latest evolution of the HyperFill(R) Twin-Wire Welding Solution with expansion of the new HyperFill RA for increased travel speeds, improved cycle times and added throughput for automated welding. Corporate August 08, 2024 United States. Lincoln Electric Named to Newsweek's America's Greatest



At Lincoln Electric Holdings, Inc., we promise to treat your data with respect and will not share your information with any third party. You can unsubscribe to any of the investor alerts you are subscribed to by visiting the "unsubscribe" section below. If you experience any issues with this process, please contact us for further assistance.



System Integration Collaborate with Lincoln Electric to integrate an automated system or optimize efficiency with existing equipment. Tooling Reliable automated tooling and robotic welding fixturing solutions provide accuracy and repeatability for various applications. Automation Services.



At Lincoln Electric, we operate to a higher standard to build a better world. We are the world leader in the design, development, and manufacture of arc welding products, automated joining, assembly and cutting systems, as well as plasma and oxyfuel cutting equipment. We are also positioned as a global leader in brazing and soldering alloys.



LINCOLN a?? Lincoln Electric System has announced that the utility will begin the second phase of its South 56th Street Reliability Project in November, with Recent stories. LES provides South 56th Street project update. 10.31.24 // News a?c a?]



System Integration Collaborate with Lincoln Electric to integrate an automated system or optimize efficiency with existing equipment. Tooling Reliable automated tooling and robotic welding fixturing solutions provide accuracy and repeatability for various applications. Automation Services. Engineering Services; Advanced Manufacturing Services



Welding helmets from Lincoln Electric are auto-darkening and feature 4C lens technology. VIKING welding helmets provide a filtering lens with the clearest view of the welding puddle and is available on the 1840, 2450 and 3350 series helmets.



What makes Lincoln Electric the supplier of choice for the many industries we serve? A proven track record with over a century of experience in cutting-edge products, comprehensive welding processes and automated solutions. Our team of experts will work with you to find the best way to weld that fits your specific requirements and helps you



System Integration Collaborate with Lincoln Electric to integrate an automated system or optimize efficiency with existing equipment. Tooling Reliable automated tooling and robotic welding fixturing solutions provide accuracy and repeatability for various applications. Automation Services. Engineering Services; Advanced Manufacturing Services



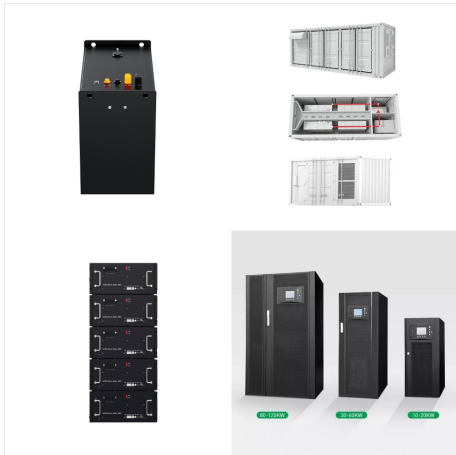
Lincoln Cares is the City of Lincoln's voluntary donation program administered through your LES bill. With Lincoln Cares, you can make a \$1 per month contribution to help fund city parks and recreation projects, libraries, older-adult programs and more.



Lincoln Electric Co., a leading producer of industrial electric motors and high-tech cutting equipment, is the world's largest manufacturer of arc-welding products. Although the majority of the company's equity remained in the hands of Lincoln family members in the early 1990s, the firm commemorated its 1995 centenary with a \$100-million public



Lincoln Cares is the City of Lincoln's voluntary donation program administered through your LES bill. With Lincoln Cares, you can make a \$1 per month contribution to help fund city parks and recreation projects, libraries, older a?]



What makes Lincoln Electric the supplier of choice for the many industries we serve? A proven track record with over a century of experience in cutting-edge products, comprehensive welding processes and automated solutions. Our team of experts will work with you to find the best way to weld that fits your specific requirements and helps you



Standard Automation Products. Robotic Welding Systems From simple to advanced applications, these systems are designed to help decrease manufacturing costs, increase weld quality, improve welding productivity, and enhance your working environment.; Collaborative Robotic Systems Coopera?c welding cobots are automated welding solutions built to work safely alongside people.



Lincoln Electric Holdings, Inc. is an American multinational and global manufacturer of welding products, arc welding equipment, welding accessories, plasma and oxy-fuel cutting equipment and robotic welding systems headquartered in Euclid, Ohio. It has a worldwide network of distributors and sales offices covering more than 160 countries and 42 manufacturing locations in North America.



About Lincoln Electric. Lincoln Electric is the world leader in the engineering, design, and manufacturing of advanced arc welding solutions, automated joining, assembly and cutting systems, plasma and oxy-fuel cutting equipment, and has a leading global position in brazing and soldering alloys.



Announcements from Lincoln Electric about new products and services, initiatives, programs, partnerships and other company-related information. Contact Our Team. Send Us a Message Latest News News From. Equipment September 18, 2024 United States. Lincoln Electric Introduces HyperFill STT as the Latest Evolution in Twin-Wire Welding