



Where is Lincoln Electric headquartered?

Lincoln Electric is headquartered in Cleveland, 22801 St Clair Ave, United States, and has 69 office locations.

Who is Lincoln Electric?

Lincoln Electric Holdings, Inc. is an American multinational and global manufacturer of welding products, arc welding equipment, welding accessories, plasma and oxy-fuel cutting equipment and robotic welding systems headquartered in Euclid, Ohio.

How many employees does Lincoln Electric have?

[4] Lincoln has over 8,500 employees globally, including 3,000 in the United States. In 2005, Lincoln's Electric acquired the Harris Products Group, which is a manufacturer of welding accessories, gas apparatus, and other specialty products. [5]

When was Lincoln Electric invented?

Lincoln Electric was founded on December 5, 1895, in Cleveland, Ohio, U.S.A. An initial \$200 investment was used to develop and commercialize a unique, direct current electric motor for industrial applications. What started as a spark of ingenuity flickered and gained momentum.

How far is Lincoln Electric from Eastlake Oh?

35000 Curtis Blvd. Eastlake OH 44095 Phone: 440-953-8000 Ask for Lincoln rates Approximately 7 miles from Lincoln Electric Lincoln Electric visitor information - find directions, hotel suggestions and more.

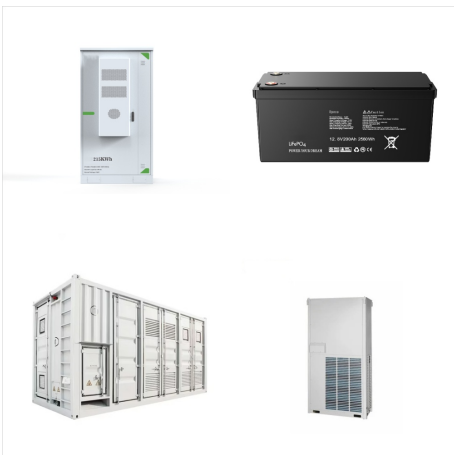
How far is Lincoln Electric from Cleveland OH?

Approximately 11 miles from Lincoln Electric. 1460 E. Ninth Street Cleveland OH 44114 Phone: 216-241-6600 Ask for Lincoln rates 25725 Central Pkwy. Beachwood OH 44122 Phone: 216-464-9600 Ask for Lincoln rates Approximately 11 miles from Lincoln Electric

LINCOLN ELECTRIC HEADQUARTERS ADDRESS



If you would like to contact Lincoln Electric's outside directors, you can send an email to directors@lincolnelectric or write to the following address: Non-Management Directors c/o Corporate Secretary Lincoln Electric Holdings, Inc. 22801 St. Clair Avenue Cleveland, OH 44177

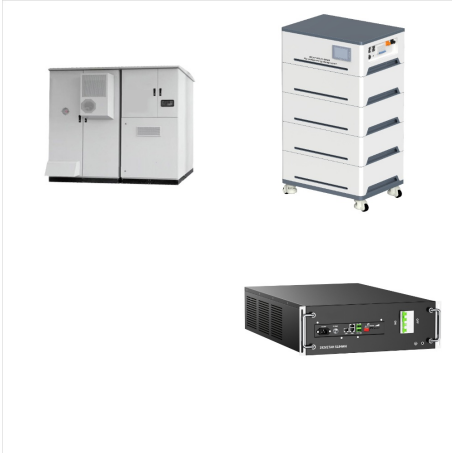


Lincoln Electric Holdings, Inc. is an American multinational and global manufacturer of welding products, arc welding equipment, welding accessories, plasma and oxy-fuel cutting equipment and robotic welding systems headquartered in Euclid, Ohio has a worldwide network of distributors and sales offices covering more than 160 countries and 42 manufacturing locations ???

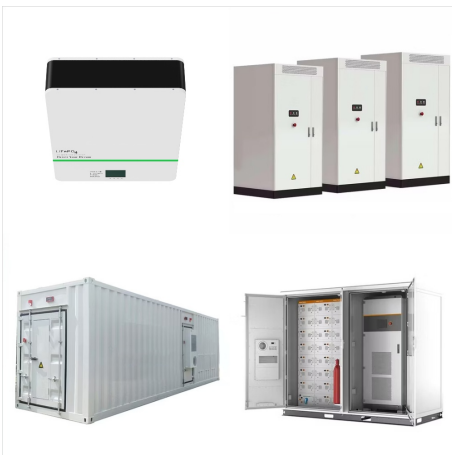


Contact Customer Service or Technical Support. Call 1 800 733 4043. Call Customer Service for more information. Live Chat. Chat with us 8AM - 5PM EST. Email International Customer Service (Excluding Canada) For general response, inquiries, pricing.

LINCOLN ELECTRIC HEADQUARTERS ADDRESS



Robot Software Solutions. From Fab-Pak (R) Cell Control and WolfArc???, to Computer Aided Robotic Welding (CAR-W???), we've developed the solutions you need to increase productivity.. Learn More > Robot Accessories & Sensors. Wolf Robotics offers a full line of options to increase the efficiency and uptime of your robotic system.



Standard Automation Products. Robotic Welding Systems From simple to advanced applications, these systems are designed to help decrease manufacturing costs, increase weld quality, improve welding productivity, and enhance your working environment.; Collaborative Robotic Systems Cooper??? welding cobots are automated welding solutions built to work safely alongside people.



Up-to-date Lincoln Electric Holdings Inc company overview including funding information, company profile, key statistics, peer comparison and more. Address 22801 St Clair Ave, Cleveland, Ohio, Headquarters: United States of America: United States of America: United States of America: United States of America:

LINCOLN ELECTRIC HEADQUARTERS ADDRESS



Find contact information for Lincoln Electric. Learn about their Industrial Machinery & Equipment, Manufacturing market share, competitors, and Lincoln Electric's email format. Lincoln Electric headquarters are located in 22801 Saint Clair Ave, Cleveland, Ohio, 44117, United States .



Contact us today and let our team of experts assist you. We offer comprehensive support and customer service to ensure your satisfaction. Menu Close. Go Back. Products. Equipment. Welding Equipment. MIG Welders; Lincoln Electric. 22801 St Clair Ave., Euclid, OH 44117. Products. Equipment



The Harris Products Group, a Lincoln Electric Company with headquarters in Mason, OH, USA is a world leader in the design, development, and manufacture of cutting, welding, brazing, and soldering equipment, consumables and gas distribution systems. Address. 4501 Quality Place Mason, OH 45040 513-754-2000 ??? Main Phone

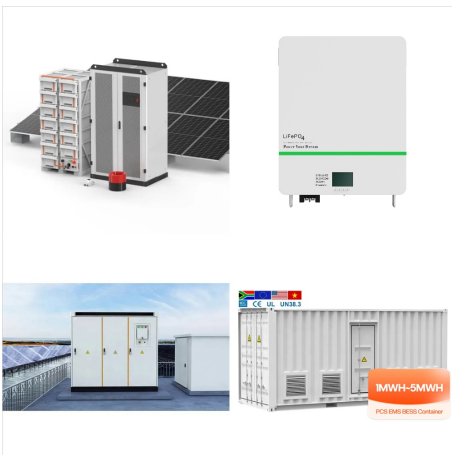
LINCOLN ELECTRIC HEADQUARTERS ADDRESS



Lincoln Electric is the world leader in the engineering, design, and manufacturing of advanced arc welding solutions, automated joining, assembly and cutting systems, plasma and oxy-fuel cutting equipment, and has a leading global position in brazing and soldering alloys.



Lincoln Electric Australia | 1,195 followers on LinkedIn. Innovative Technology. Comprehensive Welding and Cutting Solutions. | Lincoln Electric is the world leader in the design, development and manufacture of arc welding products, automated joining, assembly and cutting systems, plasma and oxy-fuel cutting equipment and has a leading global position in brazing and ???



Industry Solutions. Automotive & Transportation High speed, low spatter and controlled heat input solutions that ensure repeatability and high productivity.; General Fabrication Fabrication of metal components and assemblies involving bending, forming, cutting and welding.; Heavy Fabrication High deposition manual and automated solutions for heavy fabrication equipment and ???

LINCOLN ELECTRIC HEADQUARTERS ADDRESS



The Lincoln Electric Welding Technology & Training Center (WTTC) is a 130,000-square-foot, state-of-the-art facility on our Euclid, Ohio campus that is dedicated to training educators, industry leaders and skilled trade workers in the craft and science of welding. As an internationally recognized foundation for the development of best practices in welding education, the WTTC ???

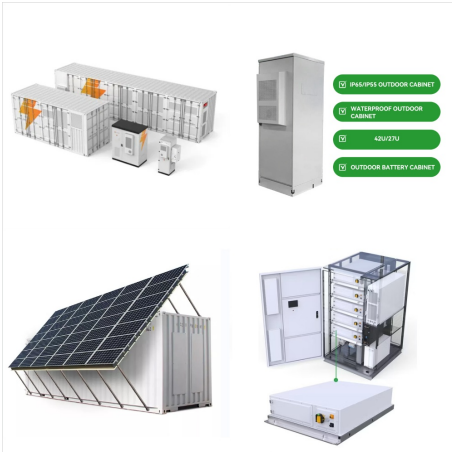


The Tax ID number for Lincoln Electric Automation, Inc. is 34-0922427. Invoicing: Sales invoices will now reference Lincoln Electric Automation, Inc. and the applicable facility from which you are purchasing Lincoln Electric Automation solutions. For more information on this consolidation, please contact your regional sales representative.



Company Description: Lincoln Electric is a worldwide broad-line manufacturer of welding, cutting, and brazing products, including arc welding equipment, brazing and soldering filler metals, plasma and oxyfuel cutting systems, wire feeding systems, fume control equipment, welding accessories, specialty gas regulators, and education solutions, as well as a comprehensive portfolio of ???

LINCOLN ELECTRIC HEADQUARTERS ADDRESS



Industry Solutions. Automotive & Transportation
High speed, low spatter and controlled heat input
solutions that ensure repeatability and high
productivity.; General Fabrication Fabrication of
metal components and assemblies involving
bending, forming, cutting and welding.; Heavy
Fabrication High deposition manual and automated
solutions for heavy fabrication equipment and ???



Headquarters 22801 Saint Clair Ave, Cleveland,
Ohio, 44117, Phone Number (216) 481-8100.
Website Revenue \$4.1 Billion. Stock Symbol LECO.
Lincoln Electric contact info: Phone number: (216)
481-8100 Website: What does Lincoln Electric do?



PythonX Headquarters Contact Information.
Burlington Automation 8 Enterprise Cres
Waterdown, Ontario Canada L8B 0Y2 Get
Directions. North America Toll Free: 1
833-PYTHONX Email Support: Support@PythonX
Lincoln Electric Head Office 22801 Saint Clair
Avenue Cleveland, OH USA 44117-1199. Request
Pricing Information for the PythonX

LINCOLN ELECTRIC HEADQUARTERS ADDRESS



Our World Class Facilities . Headquartered in Cleveland, Ohio, Lincoln operates 71 manufacturing and automation system integration locations across 21 countries and maintains a worldwide network of distributors and sales offices serving customers in over 160 countries.