

What battery does a smoke detector use?

When it comes to your home and family's safety, it's critical to have functioning alarms and to know what battery your smoke detectors use. The battery in your smoke alarm should be something that you can rely on. That's why at First Alert, we recommend a 10-Year Sealed Battery Smoke Alarm. Are 9V or AA's the Best Battery for Smoke Detectors?

Do you need a lithium battery for a smoke detector?

Check the batteries--alkaline or lithium--in your smoke detectors regularly. Q. Do you recommend using 9-volt lithium batteries to replace standard batteries in smoke detectors so that the replacement cycle can be extended?--William P. Bivins, Greenville, NC

Does Kidde smoke & carbon monoxide detector have a battery?

You can find out more about the exceptions and conditions here. Would you like to tell us about a lower price? The Kidde Smoke & Carbon Monoxide Detector, Lithium Battery Powered, Interconnect Combination Smoke & CO Alarm with Voice Alert, model P4010DCSCO-W, is powered on a 10-year, sealed, lithium battery to protect during a power failure.

How long do smoke alarm batteries last?

Ten-year alarms contain lithium batteries that last for the life of the alarm, eliminating the need for battery replacements. These alarms also have an end-of-life warning to remind you to replace the smoke alarm after 10 years. Buy a 10-Year Sealed Battery Smoke Alarm

Can a 9v battery be used for a smoke detector?

A. Lithium 9Vs aren't recommended for smoke detectors unless you follow a strict battery replacement schedule. Those batteries maintain a high voltage until the end of their usable life, so they provide a much shorter "low battery" warning to alert you that it's time to swap in a fresh one.

Why do I need a lithium battery for my alarm?

when a smoke or fire hazard is present, "Warning! Carbon monoxide!" when gas is detected, or "Low battery" Sealed-In Lithium Battery - Sealed-in lithium power supply; no battery replacement

LITHIUM BATTERIES FOR SMOKE DETECTORS



required over the 10 year life of the alarm. Eliminates worry about battery removal or unauthorized deactivation of alarm.



Photoelectric Smoke Alarm With 10-Years Sealed Lithium Battery (4-Pack) (4.5 / 2) Model# IL25SM-4 \$ 59. 98 /set (\$15.00 /unit) Add to Cart. Kidde . 10 Year Worry-Free Battery Powered Smoke Detector with Photoelectric Sensor and Safety Light



Up to 8% cash back? This alarm is powered by a 10-Year sealed-in, non-replaceable long life lithium battery. No hardwire installation required and no need to change the batteries over the ???

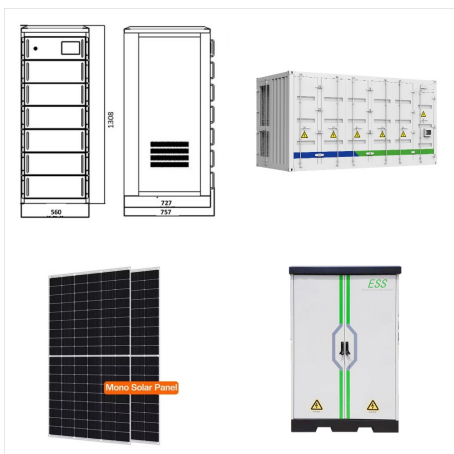


The First Alert 0827B 10-year sealed tamper resistant ionization smoke alarm features a long-life 3V lithium battery that effectively provides a full 10 years of protection, without requiring any battery change. A single test/silence button ???

LITHIUM BATTERIES FOR SMOKE DETECTORS



Effective January 1st, 2015, when you replace a battery-powered smoke alarm in your home, or install a new one, it must be powered by a non-removable and non-replaceable battery with at least a 10-year rated life.



If mains powered smoke alarms are outside your budget, the next best option is long-life lithium powered (10 year) smoke alarms. These smoke alarms will give you up to 10 years of smoke detection without needing to replace the batteries. The benefits include: No more flat battery "chirps" or "beeps" to deal with.



Photoelectric sensor technology - smoke detector detects visible fire particles, 85 decibel alarm alerts of fire ; Protects during a power failure - combo smoke and CO alarm operates on a 10-year, sealed lithium battery ; Low battery warning feature indicates when the battery needs replacement ; UL Certified, 10-year limited warranty

LITHIUM BATTERIES FOR SMOKE DETECTORS



Built-in lithium battery for long-lasting performance
??? no need to replace batteries for 10 years;
Compliant to AS3786:2014 standard; Photoelectric type smoke alarm ??? the type preferred by all fire authorities in Australia; Hush button for silencing false alarms; Loud 85 decibel siren to ensure alarms are heard



Ten-year sealed battery smoke alarms are powered by sealed lithium batteries that have a life span of ten years. These alarms provide 10 years of continuous protection with no need to replace the battery for the life of the device. Ten-year sealed battery smoke detectors are quickly becoming a requirement across the country, with many

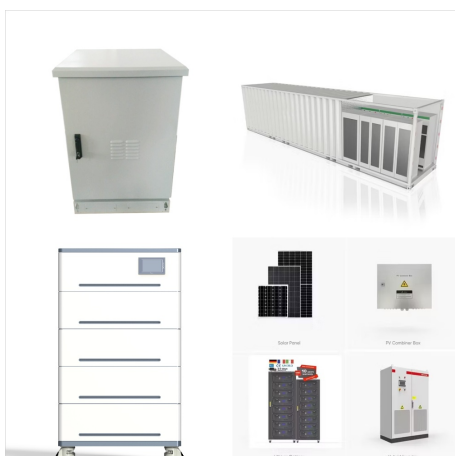


Always on - Sealed-in lithium battery powers alarm for 10 years - the life of the alarm. Save money - Save up to \$40 over the life of the alarm (battery costs). Part #21009661. The right alarm, the right location. Each of the four smoke alarms includes features designed to address location-specific safety needs, such as an LED light in the hallway.

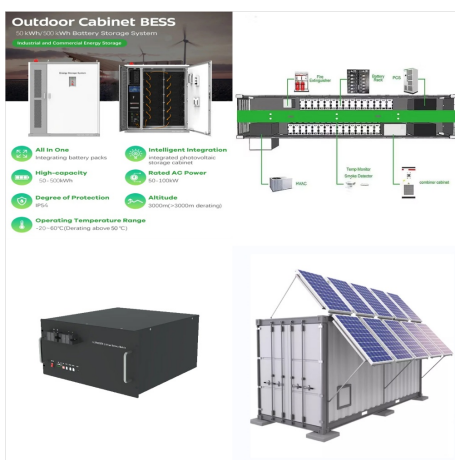
LITHIUM BATTERIES FOR SMOKE DETECTORS



After 10 years of use, the Kidde 10 Year Worry-Free Smoke Detector, Lithium Battery Powered, Fire Alarm will chirp 2 times every 30 seconds to indicate the alarm needs to be replaced. UL Certified with a 10-year limited warranty. Meets requirements of UL217, NFPA72, The State of California Fire Marshall, NFPA 101, FHA, & HUD.

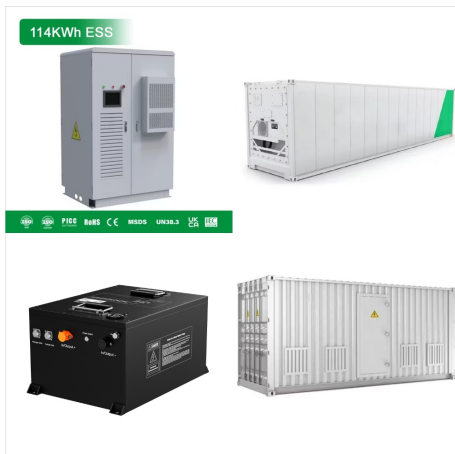


After 10 years of use, the Kidde 10 Year Worry-Free Smoke Detector, Lithium Battery Powered, Fire Alarm will chirp once every 40-45 seconds to indicate the alarm needs to be replaced. UL Certified with a 10-year limited warranty. Meets requirements of UL217, NFPA72, The State of California Fire Marshall, NFPA 101, FHA, & HUD.



*USI 10 Year Sealed Battery Smoke and Carbon Monoxide Alarms ensure peace of mind with the inclusion of a 10 Year Warranty that covers BOTH alarm and battery. USI Electric Lithium-Free 10 year Power Alarms include the aforementioned features and a host of other patented technologies that can be instrumental in safeguarding any home, apartment

LITHIUM BATTERIES FOR SMOKE DETECTORS



Worry-Free 120V AC Wire-in Smoke Alarm Sealed Lithium Battery Backup Model i12010S. Ionization Sensing Technology. Sealed-In 10-Year* Lithium Battery Backup. Hush(R) Button. Alarm Memory Indicator. 360° Mounting Plate with Tamper Resistance. 2 ???



Never Replace a Battery Again. View the 10-year worry-free smoke alarm. Never change a battery again. The Kidde Sealed Lithium Smoke Alarm saves you up to \$60 and eliminates battery replacement hassles. Product Highlights. No battery replacement for the lifetime of the alarm; Powered by a tamper-free sealed lithium power supply



The Kidde Smoke & Carbon Monoxide Detector, Lithium Battery Powered, Interconnect Combination Smoke & CO Alarm with Voice Alert, model P4010DCSCO-W, is powered on a 10-year, sealed, lithium battery to protect ???

LITHIUM BATTERIES FOR SMOKE DETECTORS



LBL battery powered alarm works exceptionally well by using ionization sensor technology to detect fast flaming fires that spread quickly. Sources of these fires include cooktop grease or wastebasket fires. Plus, this alarm features a pre-locked, 10-Year lithium battery, no need to change batteries for the life of the alarm.



Smoke detectors rely on a hardwired electrical connection or a battery for power to function. A battery-powered smoke detector is the easiest option to install, and many models have long-lasting batteries that never need replacing. That's true for the Kidde 10-Year Worry-Free Smoke Detector, which has a 10-year lithium battery. However



This smoke detector features a built-in 10-year lithium battery that provides continuous power for the life of the detector. An end-of-life warning lets you know when the device should be replaced. 10-Year, Battery-Powered Fire Detector Installation. The 10-Year battery smoke alarm and fire detector can be easily installed with no wires required.

LITHIUM BATTERIES FOR SMOKE DETECTORS



After 10 years of use, the Kidde 10 Year Warranty-Free Smoke Detector, Lithium Battery Powered, Fire Alarm will chirp once every 40-45 seconds to indicate the alarm needs to be replaced. UL Certified with a 10-year limited warranty. Meets requirements of UL217, NFPA72, The State of California Fire Marshall, NFPA 101, FHA, & HUD.



When smoke or fire is detected, an 85-decibel alarm will sound. The Kidde Smoke Detector is powered by a 120-volt power source with a sealed-in lithium battery backup, eliminating the need for replacement of batteries, yet providing coverage during a power failure. A red LED indicates that the smoke detector is sensing smoke or fire. A test



The more smoke alarms in your home, the safer it is. For maximum protection install one smoke alarm in each room. Fire Pro Photoelectric 10 year lithium battery smoke alarm, ensures the alarm is worry free for 10 years. Certified to Australian standard AS3786:2014.

LITHIUM BATTERIES FOR SMOKE DETECTORS



Battery Powered Smoke Alarm: Built with a 10-year sensor and powered by a sealed 10-year lithium battery that doesn't need to be replaced ; Premium Quality Material: This smoke detector is made from an upgraded premium material that is durable, corrosion-resistant, and flame-retardant ??? See more product details



The smoke alarm model shall be P4010DCS-W or approved equal and is powered by non-replaceable lithium metal batteries with 10-year life. The lithium batteries shall be sealed in the unit to prevent removal and/or tampering. The unit shall incorporate a photoelectric sensor.



I've found tha the Energizer Ultimate Lithium 9 Volt is the best battery for smoke detectors. This is a super high quality battery with an incredibly long life span. The main reason these make my top choice as the best 9V battery for smoke detector is because these batteries are tough durable batteries that many medical facilities trust to

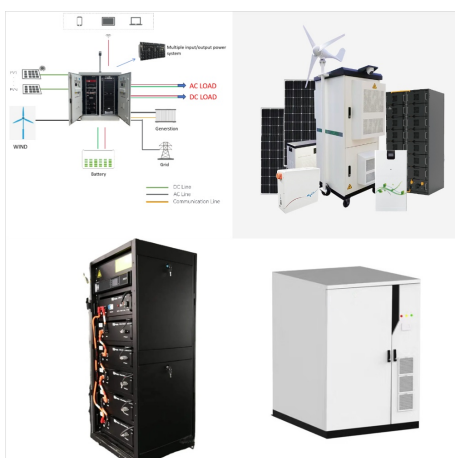
LITHIUM BATTERIES FOR SMOKE DETECTORS



For 10-year lithium-powered smoke alarms, you won't need to replace the battery. Instead, replace the entire alarm after 10 years from the manufacture date on the back of the alarm. If your detector is hardwired into your home's electrical system, replace the backup battery at least every 6 months and replace the smoke detector itself at



One of the main advantages of lithium batteries is their extended lifespan compared to other battery types. In smoke detectors, lithium batteries can typically last up to ten years, providing long-term reliability and peace of mind. This longer lifespan reduces the frequency of battery replacements, making them a convenient option for homeowners.



Kidde Sealed Lithium Battery Power Smoke Alarm i9010. Power Source 10-Year Battery. Sensor Ionization. Safety Features Better. Retail Price* \$31.47. Detail; Key Features; Specifications; Documents; The Kidde i9010 is a 10-year, sealed battery operated smoke alarm featuring Hush???, Alarm Memory, and a self-activation mechanism that makes

LITHIUM BATTERIES FOR SMOKE DETECTORS



The 10 year battery means no more having to replace the batteries. Smoke detectors are designed to last 10 years and require replacing every 10 years. We already had wired smoke detectors in the house. This requires standard electrical wiring connecting all the smoke detectors to the same circuit.



Browse the top-ranked list of Lithium batteries for smoke detectors below along with associated reviews and opinions. Main Results. Energizer - Ultimate Lithium AAA Batteries (2 Pack), Triple A Batteries. Model: L92BP-2. SKU: 8704468. Rating 4.8 ???