



2- Enter the battery voltage. It'll be mentioned on the specs sheet of your battery. For example, 6v, 12v, 24, 48v etc. 3- Optional: Enter battery state of charge SoC: (If left empty the calculator will assume a 100% charged battery). Battery state of charge is the level of charge of an electric battery relative to its capacity.



There are many types of batteries, but the most common type used in portable electronic devices is the lithium-ion battery. Lithium-ion batteries are lightweight, rechargeable, and have a high energy density (meaning they can store a lot of energy in a small space). For example, a smartphone with a 3,000 mAh battery will typically last



Battery Capacity: 20000 (mAh) Electronics
Features: Smart Charging. Connection Type: USB, USB-C. Package Quantity: 1. Wattage Output: 20 Watts. Hi DoDo, thanks for reaching out about Anker 20000mAh 20W Power Bank - Black. ???



Suppose the power bank consists of a 20,000 mAh lithium-ion battery, and the output charge voltage is 5V. So the mWh will be $20,000 \text{ mAh} \times 3.7 \text{ V} = 74,000 \text{ mWh}$. Thus, the available output electric charge will be $74,000 \text{ mWh} / 5\text{V} = 14,800 \text{ mAh}$ in theory. However, the power bank cannot be 100% efficient.



Battery Capacity: 20000 (mAh) Electronics
Features: Smart Charging. Connection Type: USB, USB-C. Package Quantity: 1. Wattage Output: 20 Watts. Hi DoDo, thanks for reaching out about Anker 20000mAh 20W Power Bank - Black. Yes, lithium battery packs with less than 100 Wh or 27,000 mAh are allowed in carry on bags.



Talentcell Rechargeable 72W 100Wh 12V/8300mAh 9V/11000mAh 5V/20000mAh DC Output Lithium ion Battery Pack for LED Strip, CCTV Camera and more, Portable Li-ion batteries with AC/DC Charger Do not use the 12V lithium battery pack in places with high humidity or where it may be exposed to wet. Do not modify or disassemble the power bank.



Lithium Polymer Battery Cell. This powerbank utilizes a high quality lithium polymer battery cell. Pocket Size. Energizer - Ultimate Lithium 10,000 mAh 20W USB-C PD & 15W Qi Wireless 4-Port Portable Battery Charger Power Bank with LCD Display - Black. User rating, 4.3 out of 5 stars with 131 reviews.



A.This Mi 3i 20000 mAh power bank uses a lithium polymer battery that ensures safety and maintains the discharging voltage. Q.Can you tell me the dimensions of the Mi 3i 20000 mAh power bank? A.This power bank (of) 20000 mAh weighs 434 g and has a height of 150.6 mm. It is 72.2 mm wide and 26.3 mm deep.



2- Enter the battery voltage. It'll be mentioned on the specs sheet of your battery. For example, 6v, 12v, 24, 48v etc. 3- Optional: Enter battery state of charge SoC: (If left empty the calculator will assume a 100% charged ???



This portable charger is a wireless Qi certified power bank that provides 20,000mAh capacity to charge smartphones, tablets, smartwatches, headphones, ear buds, and more. The Qi wireless fast charge supports up to 15W charging.



36V 20AH 20000mAh Lithium battery pack Electric bike Li ion battery for 200-1000W Motor Electric Ebike Bicycle Scooter Golf Cart with Charger & 30A BMS Protection Board POWER & ENERGY THE ELECTRIC ADVANTAGE. Rated Voltage: 36V; Charge Voltage : 42V; Capacity (amp hours) : 20Ah 20000mAh;



High-capacity Battery - With a lithium polymer battery of 10000mAh capacity, this powerbank can charge your devices multiple times. Fast Charging Output - Equipped with 22.5W PD and QC output, this powerbank ensures fast charging so you can stay ahead of the game. Ambrane 20000mAh Powerbank, 22.5W Fast Charging, Triple Output (2 USB & 1



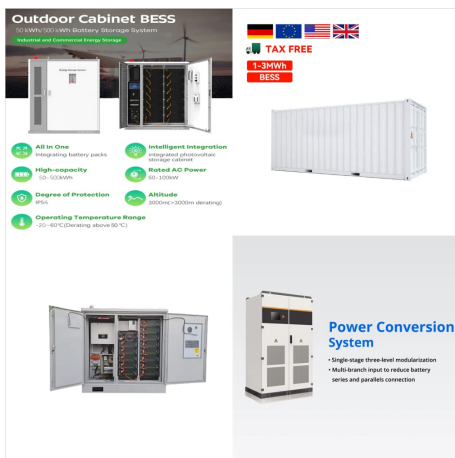
Battery Charger, Suitable for Lithium Battery 18650 20700 10440 14500 18500 16340 17500 Battery Charger, USB Single Slot li-ion Rechargeable Battery Charger (Battery not Included) 4.4 out of 5 stars. 428. 300+ bought in past month. \$6.99 \$ 6.99. FREE delivery Thu, Nov 7 on \$35 of items shipped by Amazon.



Buy EEMB Lithium Polymer Battery 3.7V 2000mAh 103454 Lipo Rechargeable Battery Pack with Wire JST Connector for Speaker and Wireless Device- Confirm Device & Connector Polarity Before Purchase: 3.7V - Amazon FREE DELIVERY possible on eligible purchases 3.7v 2000 mAh battery . Nominal Capacity & Voltage: 2000 mAh, 3.7 V . Standard Charge



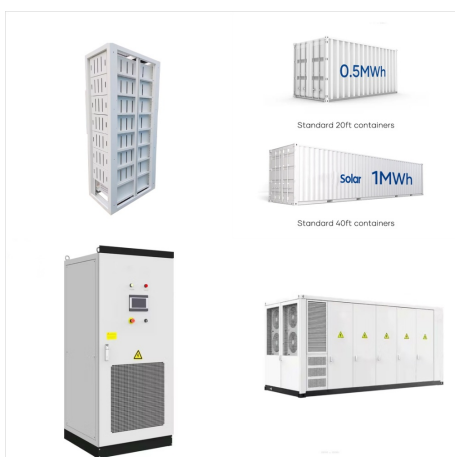
Power up your devices with Pro-range NMC 21700 22.2V 20000mAh 3C 6S4P Li-Ion Battery Pack. Reliable, high-capacity energy solution. Shop now! Chargers and Accessories Batteries Lithium Ion Battery Packs 24V Li-Ion Battery (22.2V~25.2V) Pro-range NMC 21700 22.2V 20000mAh 3C 6S4P Li-Ion Battery Pack. 24V Li-Ion Battery (22.2V~25.2V)



3.7 v 6s 3s 2300mah 22000mah Lithium Battery
 11.1v 3.7v 20000mah 750mah 3500mah RC
 Polymer Li-polymer Lipo Battery 7.4v 40000mah.
 \$0.68-\$1.48. Min. Order: 5 pieces. Previous slide
 Next slide. Li-polymer Batteries 300mah 5000mah
 22000mah 20000mah 10000mah 3.7v RC Drone
 Lipo Battery 3.7 v Li Lithium Polymer KC Battery.



Small, Lightweight and Super powerful Battery.
 20000mAh Maxed out Capacity. Battery is
 comparable with any electric reels that use 12V.
 Small battery but very powerfu ; Package includes:
 Battery, Charger, shoulder Carry Bag(easy to move
 around the boat). The battery works perfectly with
 any Shimano, Daiwa, Banax Kaigen electric reels



A 20000mah battery lithium, a remarkable power
 source, is your perfect match if you frequently travel
 or engage in outdoor activities that demand a robust
 battery capacity. This high-capacity 20000mah
 battery lithium ensures your electronic devices
 remain charged, whether you're using a phone, a
 portable speaker, or other compatible gadgets.

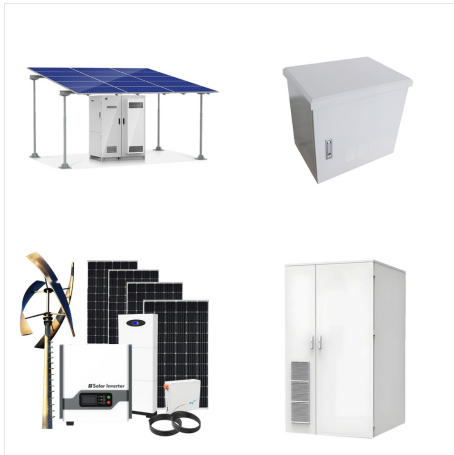


Image 1: A Lithium-ion battery showing Watt-hour (Wh) rating on the case. This is usually stated on the battery itself (see Image 1). If not, you can calculate it as Volts x amp hours (Ah). example 1: an 11.1 volt 4,400 mAh battery ??? first divide the mAh rating by 1,000 to get the Ah rating ??? $4,400/1,000$??? 4.4ah.



The larger the mAh battery of the solar generator, the more electrical energy it can store. Let us suppose that the lithium battery is 12V. $Wh = mAh \times V \div 1000 = 20000mAh \times 12 \div 1000 = 240Wh$. Similarly, let us suppose the battery voltage is 12V. The watt-hour will be:



Think of a battery as an example. If that battery can maintain a current output of one milliamp for 1 hour, you could call it a 1 mAh battery. A milliamp is a tiny amount of power, so this battery wouldn't be very practical. Practically, we see mAh used in any electronic device with a battery, from phones to Bluetooth speakers. These devices



INIU's BI-B5 power bank features a 20000mAh Lithium-Polymer battery and a variety of charging technologies such as Fast Charge Protocol (FCP) and Super Charge Protocol (SCP), Power Delivery 3.0, and Quick Charge 4.0+. Quick Charge 4+ (QC 4.0+) is a fast charging technology that allows users to charge devices three times faster than regular 1A