



The graph below from Battery University article How to Prolong Lithium-based Batteries shows what happens when  $V_{max}$  is increased above 4.2V. At the end are 3 tables from the same battery University page which show the effects on cycle life from varying various parameters (depth of discharge, temperature,  $V_{max}$ )



The voltage range of batteries made of ternary materials is between 2.5V and 4.2V. Lithium-iron phosphate battery. Lithium iron phosphate battery is a kind of lithium-ion battery using lithium iron phosphate ( $\text{LiFePO}_4$ ) as the cathode material and carbon as the anode material, with a single rated voltage of 3.2 V and a charging cut-off voltage of

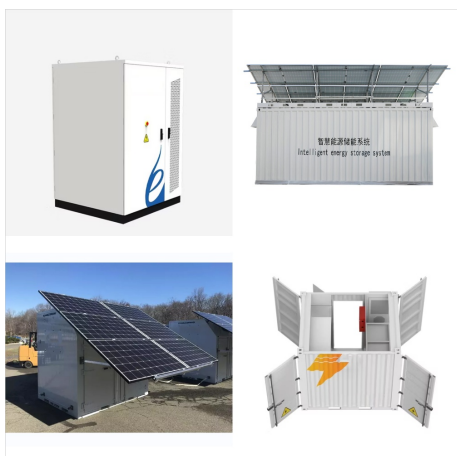


Buy AOLITHIUM 51.2V 100Ah  $\text{LiFePO}_4$  Lithium Battery, 4 Pack 5120Wh Built-in 100A BMS Lithium Batteries, 4000+ Cycles & 15+ Years Lifespan Deep Cycle Battery for RV, Marine, Solar Energy Storage, Camping: 12V - Amazon FREE DELIVERY possible on eligible purchases





Most lithium ion batteries operate within a range of 2.5V to 4.2V where 2.5V is fully depleted and 4.2V is fully charged. Unlike standard AA and AAA alkaline batteries which have a voltage of 1.5V, 18650 li-ion batteries have a nominal voltage of ~3.7V and as such require a ???

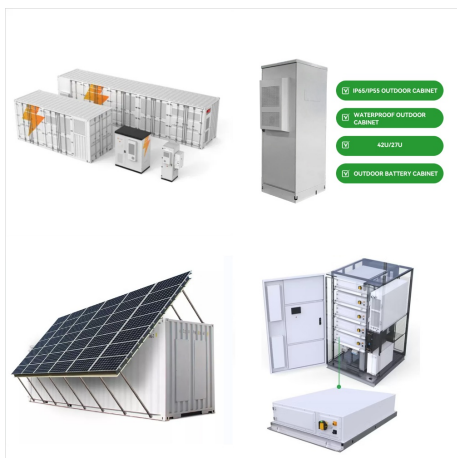


Would it be possible to make this able to charge 6x 4.2v Lithium ion battery's separately with their own scr trigger while only using 1 lm317. Reply. Afterburn Effect says. August 30, 2017. Recently I acquired some 4.2 volt 4200 mAh lithium ion batteries (size TR18650) but am planning to build my own charger.



This is a TP5000 3.6V/4.2V 1A Lithium Battery Charger Module based on the TP5000 Battery Charging IC. This module can charge a lithium battery with an current of up to 1A. This module has advance features like battery temperature protection, reverse battery shutdown, and short circuit protection.

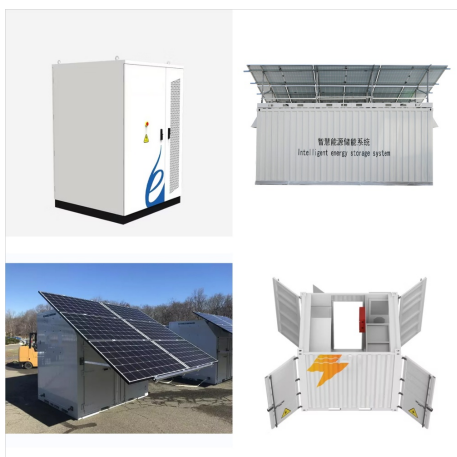




4S 4.2V 14.4V 16.8V 68mA Lithium Battery Charge Balance Protection Board. Brand New ? Unbranded. \$1.42. or Best Offer. \$2.00 shipping. 4S 16.8v Balance Board 4.2v Li-ion Lithium Standalone BMS Add-on. Brand New ? Apex. \$8.99. Free shipping. 95 sold. 3S 1P 2P 4P Power Wall Balancer PCB Module Power Bank Case 21700 battery holder.



\$begingroup\$ Just to clear things up, what I'm trying to say is, if you continuously charge a lithium ion battery at 4.2v, it kills the battery. So what will happen if you continuously charge a lithium ion battery at say 4.0v \$endgroup\$ ???



It is more energy intensive than traditional LiPo batteries. A LiHv battery is capable of charging to 4.35V or higher per cell while the peak cell voltage of a normal lithium polymer battery is 4.2V and the nominal voltage only 3.65 to 3.7V. Advantages of ???





3-in-1 Package Cloudenergy 48V (51.2V) 100Ah Lithium-Ion Golf Cart Battery, the kit comes with everything! Comes with a high-performance 58.4V 20A Li-Ion quick charger, a 2.8-inch LCD touch screen (for real-time battery information), and a 78.74-inch battery mounting strap to make battery installation easy and secure!



Parameter: Charging voltage: DC 4.5V-5.5V (DC 5V recommended) Charging current: 0-2.1A Charging quiescent current: 100uA Full voltage: 4.2V+ -1% Discharge current: 0-2.4A Discharge quiescent current: 50uA Discharge efficiency: up to 96% Output voltage: 5V Output current: 0-2.4A Ambient temperature: -20??? to + 85??? PCB board process: Shen Jin ???



48V Lithium Battery Voltage Chart (3rd Chart). Here we see that the 48V LiFePO4 battery state of charge ranges between 57.6V (100% charging charge) and 140.9V (0% charge). 3.2V Lithium Battery Voltage Chart (4th Chart). This is your average rechargeable battery from bigger remote controls (for TV, for example).





LiFePO4 Battery 600mAh 3.2V details. 14500  
 LiFePO4 Battery 600mAh 3.2V. CAT.NO: SB2305.  
 \$19.90. Add to cart. Add to list. Add to list.  
 Rechargeable Lithium 3.7V 700mAh RCR123A  
 16340 Battery 4 Pack details. Rechargeable Lithium  
 3.7V 700mAh RCR123A 16340 Battery 4 Pack.  
 CAT.NO: SB2294. \$46.90. Add to cart. Add to list.



JacobsParts Smallest USB Type C 3.7V Lithium  
 Battery Charger Board 4.2V Charging Module with  
 Protection Circuit and LED Charge Indicators 5V  
 USB-C Input (2 Pack) 4.3 out of 5 stars. 19. 50+  
 bought in past month. \$4.99 \$ 4. 99 (\$2.50 \$2.50  
 /Item) FREE delivery Fri, Oct 25 on \$35 of items  
 shipped by Amazon.



For example, almost all lithium polymer batteries are  
 3.7V or 4.2V batteries. What this means is that the  
 maximum voltage of the cell is 4.2v and that the  
 "nominal" (average) voltage is 3.7V. As the battery  
 is used, the voltage will ???





4.2V polymer all-solid-state lithium batteries enabled by high-concentration PEO solid electrolytes. Author links open overlay panel Zhe Xiong a, Zixing Wang a, Wang Zhou a, oxide based composite electrolyte to achieve ultra-stable performance of high voltage solid-state LiNi 0.8 Co 0.1 Mn 0.1 O 2 /lithium metal battery. Nano Energy, 80



Default Output Voltage: 4.2V (For Lithium Ion Battery) Can charge Lithium Ion Battery (4.2V) as well as Lithium Phosphate battery (3.6V) Output Current: 1A (Default, Changeable) LED Indicator: RED indicates charging ON, GREEN indicates charging complete; F Solder pad connected: 3.6V Lithium Phosphate Battery Charging Mode; F Solder pad



The 4.2V 2A Lithium Battery Charger (1s) is a compact and efficient charging solution designed to recharge lithium batteries such as the 18650. Offering convenience and versatility, this portable wall charger ensures that your batteries are ready to power your devices whenever you need them. With its user-friendly design and compatibility, it's





The specific voltage of a working 18650 battery ranges from 3.2V to 4.2V. The voltage limit setting of PCB is 3V ~ 4.35V. Unfortunately, this control system is not very precise. PCB doesn't stop charging until the voltage reaches 4.35V. But the peak voltage of the battery should be 4.2V.

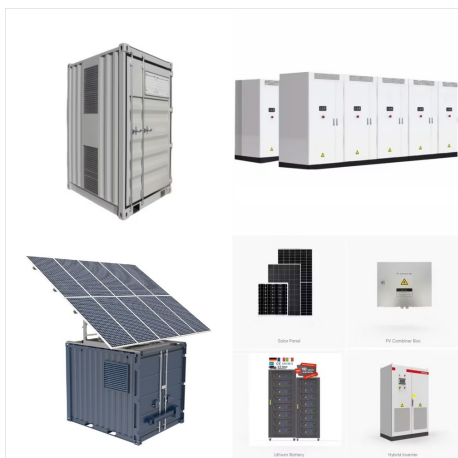


4.2V 6800mAh Rechargeable Lithium Battery Red .  
Features: 1. High quality and durable 2. Provide excellent continuous power sources to your device 3. High energy density, large capacity and long life battery 4. No memory effect, recharge up to many times 5. Rechargeable type and professional design, safe and convenient to use



It's charging circuit is based on ME4057D chip, which is a 1 A lithium battery charger. The suffix -D in the chip's name indicates a variant which, according to the datasheet, charges the battery to 4.34 V, instead of normal 4.2 V. The reason for the higher voltage is that they surge charge the battery to 4.2V. Of course to





Explore our extensive selection of 18650 lithium-ion batteries, including renowned brands such as SONY VTC6, Sanyo NCR, SAMSUNG INR, SAMSUNG ICR, and PANASONIC NCR. 1 Cell Li-Ion Battery (3.6V~4.2V) Showing all 7 results. Filters 1 Cell Li-Ion Battery (3.6V~4.2V) Pro-range INR 18650 3.7V 2600mAh 3C 1S1P Li-Ion Battery Pack (No BMS)



Explore the convenience and savings of purchasing a high-quality, versatile 18650 4.2V battery on AliExpress. This 18650 4S battery pack offers an unparalleled capacity that is unparalleled. With its robust, rechargeable design, the 18650 4.2V battery is the perfect solution for demanding applications, making it an ideal choice for powering numerous gadgets, from flashlights to ???



2 Pack 3.0Ah 19.2V Diehard C3 Replacement Battery for Craftsman 19.2V Battery XCP Compatible with Craftsman 19.2 Volt Lithium ion Battery 11375 130279005 1323903 315.115410 315.11485 Cordless Tools 4.4 out of 5 stars 346





Output: DC 4.2V 2A (Suitable for 3.7V 4.2V 1-string Lithium Battery Pack) Output Wire length: 1m / 3.28ft. With over-current protection, over-discharge protection, over-voltage protection, overcharge protection, short circuit protection. ? 1/4 ? Enter Protection mode, with flashing red light? 1/4 ?



Depending on the design and chemistry of your lithium cell, you may see them sold under different nominal "voltages". For example, almost all lithium polymer batteries are 3.7V or 4.2V batteries. What this means is that ???