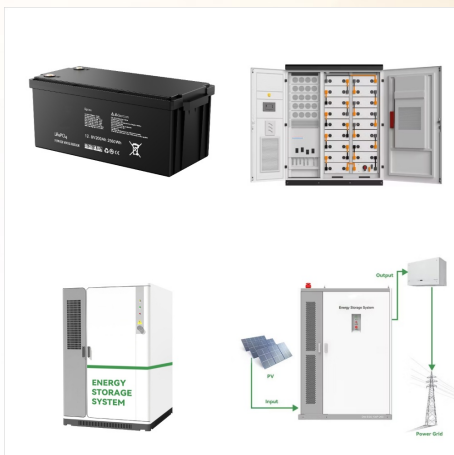
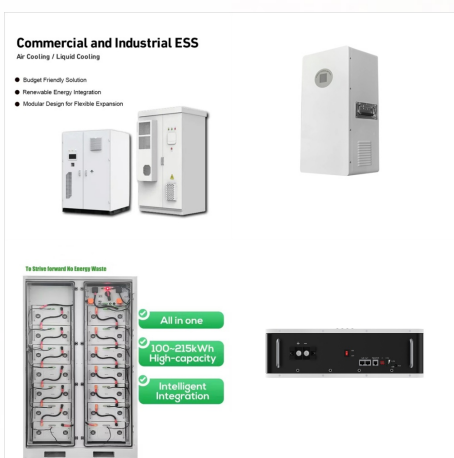




Enerdrive | Dometic B-TEC LiFePO4 12v 400Ah Slimline Lithium Battery. The new 400Ah ePOWER B-TEC Slimline lithium battery is designed and intended for use in deep cycle applications where a single battery is required that meets the amp hour capacity. Extremely compact size W 630 x H 498 x D 216.5 mm. All connection points for the battery are at



A 400Ah lithium battery may utilize multiple battery cells connected in parallel or series to achieve the desired total capacity and voltage. Charging Rate: Understanding the charging rate of the battery is important for fast charging and reducing charging time. Some 400Ah lithium batteries may support higher charging rates, which can be



HomeAmpere Time 12V 400Ah, 5120Wh Lithium LiFePO4 Battery & Built in 250A BMS-16% Sold out. Click to enlarge. Ampere Time 12V 400Ah, 5120Wh Lithium LiFePO4 Battery & Built in 250A BMS. \$1,899.99 \$1,599.99 SAVE 16%. Free shipping, tax (vary by region) and discount codes calculated at checkout.



Explore our 24V 400AH Lithium Ion Battery, the ultimate choice for reliable, long-lasting power. Engineered for top performance, this battery is ideal for anyone seeking a dependable 400Ah lithium battery solution. Specification Details; Nominal Voltage: 25.6 V: Nominal Capacity: 400 AH: Energy: 10,240 Wh: Capacity @ 25A:



The REGO 12V 400Ah lithium battery with IP65 rating waterproof design applies to more scenarios such as yacht, marine and outdoor, etc. The lids that use die casting technology have a much higher tolerance for extreme temperatures and better electrical properties and are more durable and stable compared to plastic parts, giving the battery full



The 24V 400Ah Lithium battery pack with True 400AH capacity, is perfect for the RV, semi truck, boat, or golf cart that uses a deep-cycle batteries to power lights, inverters, motors, pumps, electronics, AC/heaters and more. Lithium batteries offer stable performance in any climate or condition for Campers and Battery Based Solar Systems.



The CHINS 400AH Smart 12.8V LiFePO4 Lithium Bluetooth Battery w/ Built-in 200A BMS built-in high-temperature cut-off prevents charging over 122 °F (50 °C). Lithium Iron Phosphate batteries ship under Class 9 Dangerous Goods PI 965 ???



Up to 4% cash back? LiTime 12V 400Ah battery powers your life safely and sustainably through top EV Grade-A Lithium Iron Phosphate cells. It can be charged up to 4000+ times at 100% DOD over 10+ years of high performance.



Replaced two aging 100ah AGM batteries in our Opus 2 camper with a single 400ah Ampere Time lithium battery. Due to special issues this battery had to be mounted on its side, but fit great once installed, see picture. Our AGM's were good for 3 days off grid when new and only 1 day after two years of use. The new battery has not been tested to



How long will a 12v 400Ah lithium battery? 500W: 8 hrs: 700W: 6 hrs: 1000W: 4 hrs: 1200W: 3.5 hrs: 1500W: 2.5 hrs: 2000W: 2 hrs: Summary. 400ah battery will last between 2 to 8 hours with an inverter. The exact value will depend on the size of your inverter. How long will a 400 amp hour battery last --- examples.



If you want to build a huge off-grid solar power system with all the features you can imagine for a low price, Aolithium 51.2V100Ah server rack batteries are the way to go. Shop best 51.2V 100Ah server rack battery. UL Listed Class A battery. 4000+ cycles @85% DOD, 6000+ cycles @80% DOD. 15+ years typical lifespan and 8-year warranty. 6.0 single pole angled connector (IP67), ???



Larger Capacity - SOKERDY 12V 100Ah lithium battery can be connected in parallel & in series for larger capacity. Allow being extended up to 4S or 4P to get Max 400Ah capacity or Max 48V(51.2V) voltage. Support 3C discharge and 1C charge. Widely used in most areas such as RV, Solar, Household Battery, Off-Grid and Electric Scooter, Electric





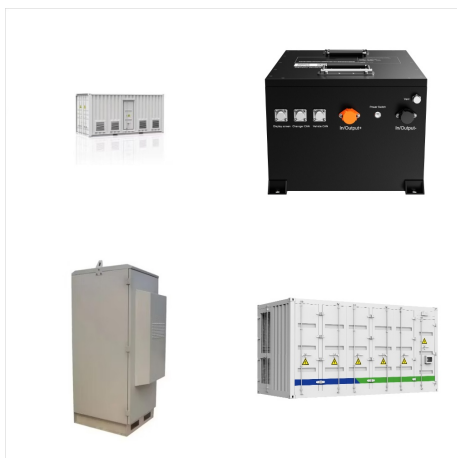
The 12V 400AH Lithium Ion Battery is described as a top-tier energy solution, providing enduring and efficient power. It boasts premium quality, durability, and long-lasting performance, making it a reliable choice for power storage. This battery is perfect for all devices requiring a robust and efficient power source.



REGO 12V 400Ah deep cycle battery with 5.12kWh massive capacity provides an lifespan of more than 3800 cycles. The built-in battery management system offers over 60 types of protections, making it ideal for demanding off-grid and solar ???



The Chargex(R) CX48400 - 48V 400AH Lithium Ion Battery features the latest and most advanced Lithium Iron Phosphate - LiFePO4 Battery Technology. The fully automatic Built In Battery Management System provides cell balancing, over charge or over discharge protection, short circuit and reverse polarity protection all making the Chargex CX48400



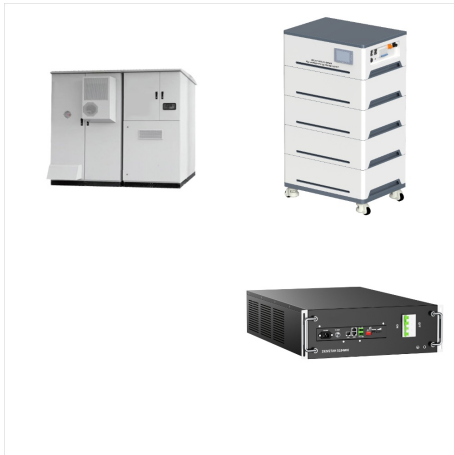
A 400Ah lithium 12v battery offers ample power to run various devices and appliances, making it ideal for off-grid and mobile applications. With its large capacity and high energy density, it can power a 12V fridge for weeks.



Ah solar batteries can store power for grid-tied, grid-assisted backup, or off-grid solar installations. A 400 Ah battery operating at 6V (volts) can store 2,400 watt hours, or 2.4 kWh, of DC power. With a 50% depth-of-discharge (DOD) rate to extend the battery life, the 400 Ah battery could deliver 1.2 kWh of daily power.



???Lithium Battery with Grade A Cells??? LiTime 12V 400Ah Lithium Iron Phosphate (LiFePO4) batteries have exceptional quality since they are assembled by Automotive Grade LiFePO4 Cells with UL Testing Certificated, which make them higher energy density (37.12 Wh/lb), more stable performance, greater power, and excellent 3% self-discharge rate.



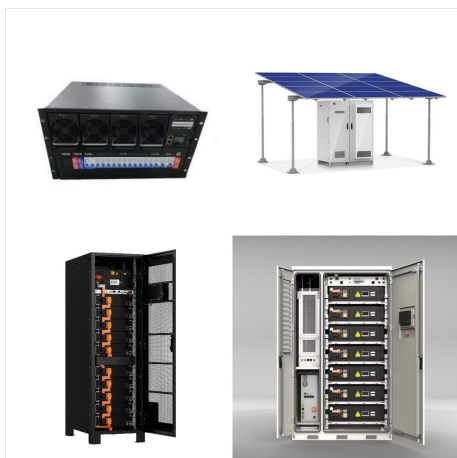
Upgraded EG4-LL (Lifetime Lithium) Lithium Iron Phosphate battery 12.8V (12V) 5.12kWh with 200A internal BMS, based on the same subset features of the previous industry renowned EG4-LL Battery. Composed of (16) UL listed prismatic 3.2V cells which have been tested at 7,000 deep discharge cycles to 80% DoD - fully charge and discharge this battery daily for over 15 years ???



100% Protection | Using without Risk: Ampere Time 12V 400Ah lithium battery builds in 250A BMS to protect from overcharging & discharging, over current, short circuit, and over temp. ???



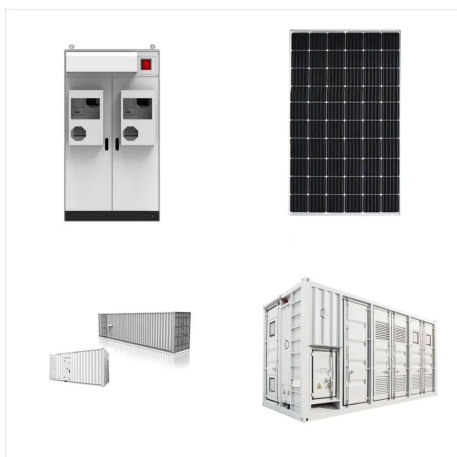
Buy Lynx Battery 24V 400AH Lithium Iron Phosphate LiFePO4 PowerMax Battery, Cased, with Smart BMS, Bluetooth, Cold Temp Cut Off???: Batteries - Amazon FREE DELIVERY possible on eligible purchases



SECOND GENERATION POWER STORAGE IS HERE! The 12V 5.12kWh LiFePO4 HUSKY 2 is the latest battery to come out of the BigBattery workshop, providing a high-amperage solution, with unmatched reliability and efficiency, for your RV, camper van, and marine applications. This battery is our most advanced 12V solution to date, designed to power your adventures no ???



The Litime 12V 400Ah LiFePO4 Lithium Battery offers exceptional value for those in need of a reliable and powerful power source. Its long lifespan, high load power, fast charging capabilities, and lightweight design make it a ???



12V 400Ah battery \$ 3,399.98 ??? \$ 3,649.98. 12V 100Ah Battery ??? PRO SERIES \$ 1,089.98. VOLTHIUM IS ALL THAT! 2011 Founding the company 25 Employees. Lithium battery recycling has also become more efficient, allowing valuable materials such as lithium, cobalt,





Amp Hour LIFEP04 Lithium Battery constructed using 3.2V LIFEP04 Lithium Cells, 5.12kWh, 12.8V Actual Voltage, 14.6 Max Voltage Safe for use in parallel for higher capacity systems, Each battery has a true 400 Amp Hour Capacity at 12.8V, 200A Continuous Discharge (each battery), Each 400Ah battery has its own Smart Battery Management System (Smart ???)



The REGO 12V 400Ah lithium battery with IP65 rating waterproof design applies to more scenarios such as yacht, marine and outdoor, etc. The lids that use die casting technology have a much higher tolerance for extreme temperatures ???



The fully automatic Built-In Battery Management System provides cell balancing, overcharge or over-discharge protection, short-circuit, and reverse polarity protection, making the 48V 400AH battery one of the world's safest and most advanced lithium batteries.



Key Features. High Capacity: The Lifepo4 Solar Energy 24V 400Ah Lithium-Ion Battery boasts a remarkable capacity, providing ample energy storage for both residential and commercial applications. Long Lifespan: Built to last, this ???