

Can you carry a lithium ion battery on a plane?

Lithium-ion batteries, including those in laptops and power banks, are allowed but limited to 100 watt hours per battery, with the option to carry up to two larger 101-160-watt-hour batteries with airline approval. Lithium metal (non-rechargeable) batteries are permitted up to 2 grams of lithium per battery.

What batteries are allowed in carry-on luggage?

Batteries allowed in carry-on baggage include: Dry cell rechargeable batteries such as Nickel Metal Hydride (NiMH) and Nickel Cadmium (NiCad). For rechargeable lithium ion batteries; see next paragraph. Lithium ion batteries (a.k.a.: rechargeable lithium, lithium polymer, LIPO, secondary lithium).

Should you travel with lithium batteries?

Traveling with lithium batteries has become commonplace as they power everything from smartphones to laptops, cameras, and even medical devices. In May 2023, the Federal Aviation Administration (FAA) revealed that lithium-ion battery fires had jumped 42 percent in the last five years.

Can I carry a battery on a plane?

Please check with your airline for any size or weight restrictions. Devices containing lithium metal or lithium ion batteries should be carried in carry-on baggage. Most other consumer devices containing batteries are allowed in carry-on and checked baggage. For more information to portable electronic devices, see the FAA regulations.

How many batteries can a passenger carry?

Quantity limits: None for most batteries -- but batteries must be for use by the passenger. Batteries carried for further sale or distribution (vendor samples, etc.) are prohibited. There is a limit of two spare batteries per person for the larger lithium ion batteries described above (101-160 watt hours per battery).

Can lithium batteries cause a fire on a plane?

Smoke and fire incidents involving lithium batteries can be mitigated by the cabin crew and passengers inside the aircraft cabin. If carry-on baggage is checked at the gate or plane side, spare lithium batteries, electronic cigarettes, and vaping devices must be removed from the baggage and kept with the passenger in the aircraft.

LITHIUM BATTERY ALLOWED ON CARRY ON



cabin.



Small lithium battery-powered vehicles are not accepted in either checked baggage or carry-on baggage due to safety concerns associated to the lithium batteries that power them. Prohibited vehicles include: hoverboards, AirBoards, electric skateboards, airwheels, mini-Segways, balance wheels, battery-assisted bikes and electric scooters.

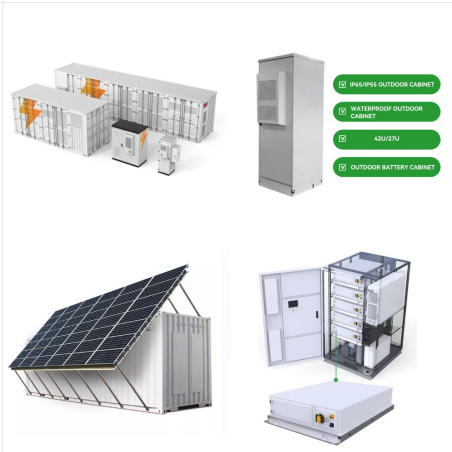


Smart bags with integrated lithium batteries for the purpose of charging an external device or to provide power to the wheels of the bag with non-removable lithium batteries will not be accepted as cabin baggage or Check in baggage, unless the device contains only lithium batteries not exceeding 0.3g of lithium metal batteries or 2.7Wh of lithium ion batteries.

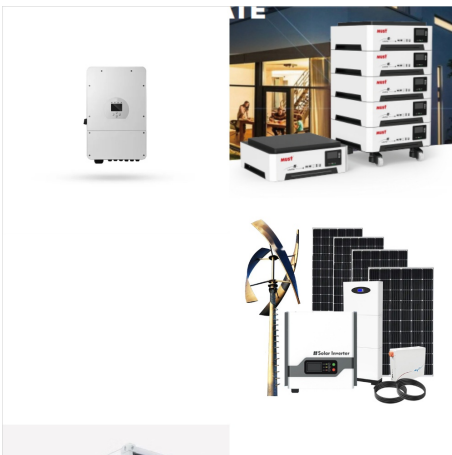


Carry-On whenever possible: It's generally recommended to carry lithium batteries in your cabin baggage rather than in checked baggage. This way, you can keep an eye on their safe handling and prevent potential damage. Most lithium batteries are allowed on planes, including lithium-ion (Li-ion) and lithium metal batteries, as long as they

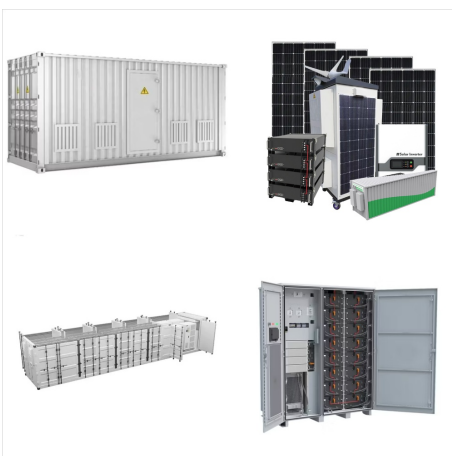
LITHIUM BATTERY ALLOWED ON CARRY ON



Lithium-ion batteries: You can carry a maximum of two lithium-ion batteries, with each battery not exceeding 160 watt-hours (Wh). You may need airline approval for these. Personal transportation devices: Lithium-ion battery-powered personal transportation devices like hoverboards or scooters are not allowed on board, as carry-on or checked baggage.



Spare (uninstalled) lithium ion and lithium metal batteries, including power banks and cell phone battery charging cases, must be carried in carry-on baggage only. Lithium metal (non-rechargeable) batteries are limited to 2 grams of lithium per battery. Lithium ion (rechargeable) batteries are limited to a rating of 100 watt hours (Wh) per battery.



Since some electronic cigarettes use lithium ion batteries, you cannot travel with them in your checked bags. You can travel with them in your carry-on, but you're not allowed to use them ???

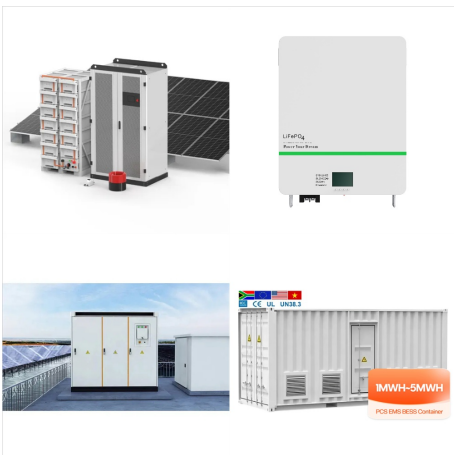
LITHIUM BATTERY ALLOWED ON CARRY ON



Batteries up to 100 Wh. ii. Lithium metal batteries: The lithium metal content must not exceed 2 g. Lithium-ion batteries: The Watt-hour rating must not exceed 100 Wh. iii. Passengers can carry batteries emptied from their electronic equipment. In addition, each person can carry a maximum of two spare batteries. Batteries exceeding 100 Wh. iv.



Batteries containing more than 0.3 g of lithium or with a capacity of over 2.7 Watt-hours may not be checked in nor carried onboard. Removable lithium batteries: Capacity of the lithium battery must be lower than 160 Watt-hours: If the smart baggage is checked in, the battery must be removed and carried as carry-on baggage.



Up to two larger lithium ion batteries (more than 8 grams, up to 25 grams of equivalent lithium content per battery) in their carry-on. This size covers larger extended-life laptop batteries. Most consumer lithium ion batteries are below this size. Lithium ion batteries that are between 101 ??? 160 wh are allowed in carry-on bags with airline

LITHIUM BATTERY ALLOWED ON CARRY ON



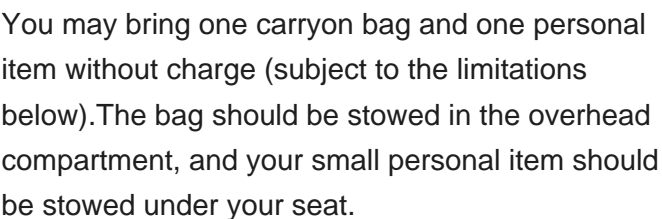
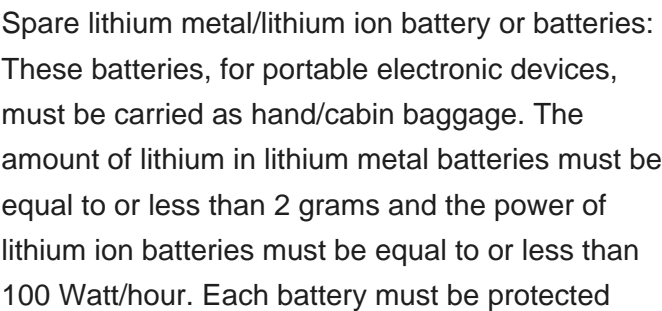
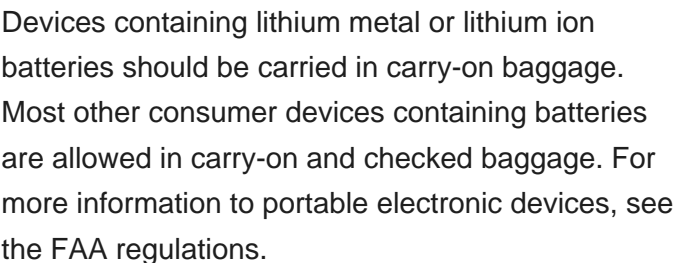
- A lithium ion battery power bank that charges electronic devices such as mobile phones and laptops - A lithium ion battery that is used for a stand-up scooter or sit on vehicle - Bluetooth, radio frequency identification and Wi-Fi capability - GPS tracking with or without GSM capability - Electronic baggage tags - Electronic locks



Size limits: Lithium metal (non-rechargeable) batteries are limited to 2 grams of lithium per battery. Lithium ion (rechargeable) batteries are limited to a rating of 100 watt hours (Wh) per battery. These limits allow for nearly all types of lithium batteries used by the average person in their electronic devices. With airline approval



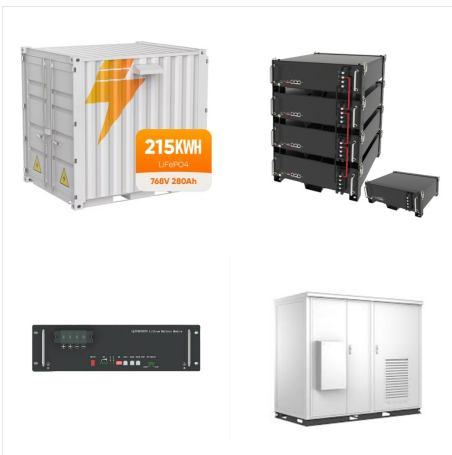
Lithium batteries are allowed in carry-on baggage, only for portable electronic devices (phones, computers, tablets, cameras, oxygen concentrators (POC)), as long as they are transported in their original packaging, with the terminals insulated or individually in plastic bags and do not exceed 100 Wh (Watt-hour, Watt-hour) or the lithium metal



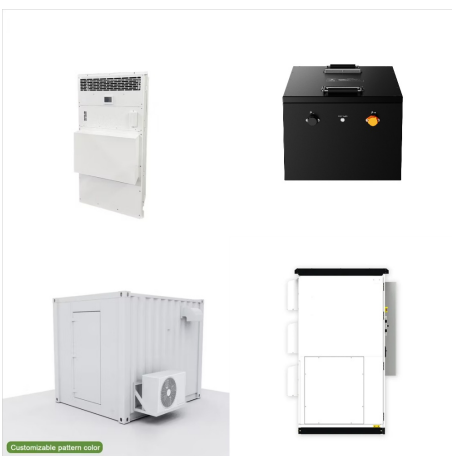
LITHIUM BATTERY ALLOWED ON CARRY ON



Do not carry damaged or recalled batteries on the plane. Examples of lithium batteries. Small lithium batteries and cells (<100Wh) - mobile phones, cameras, watches, portable music players, most original laptop computer batteries; Medium lithium batteries and cells (100-160Wh) - extended life batteries for laptop computers and batteries used by



They must be carried with the passenger in carry-on baggage. Smoke and fire incidents involving lithium batteries can be mitigated by the cabin crew and passengers inside the aircraft cabin." The FAA has set specific limits for lithium batteries on airplanes. For lithium metal batteries, the limit is 2 grams of lithium per battery, while for



Spare (uninstalled) lithium ion and lithium metal batteries, including power banks and cell phone battery charging cases, must be carried in carry-on baggage only. Lithium metal (non-rechargeable) batteries are limited to 2 grams of lithium per battery. Lithium ion (rechargeable) batteries are limited to a rating of 100 watt hours (Wh) per battery.

LITHIUM BATTERY ALLOWED ON CARRY ON



Batteries belong in the carry-on bag. Today, almost all drones are powered by a lithium-polymer battery (LiPo for short). They are classified as dangerous goods, because in very rare cases the battery may ignite. LiPo battery regulations: According to the airline's website, a maximum of 15 lithium batteries is allowed per person



If the battery is a spare and not in the equipment, you must carry it in your carry-on baggage only. Lithium ion batteries 160Wh and over. You can't carry lithium batteries rated at 160Wh or more unless they're for wheelchairs and other mobility aids. Read more about wheelchairs and mobility aids with non-spillable batteries on flights.



Lithium metal batteries must not exceed 2g lithium content and lithium-ion batteries must not exceed 100Wh. Important note: If your cabin bag is checked in or removed at the gate and placed in the hold, you must remove all spare batteries and power banks and carry them with you in the cabin. In checked baggage. Must be kept in the device.

LITHIUM BATTERY ALLOWED ON CARRY ON



Rechargeable batteries allowed in carry-on baggage. LIPO, secondary lithium) are allowed, but with some limits. Passengers may carry consumer-sized lithium ion batteries with no more than 8 grams of equivalent lithium content or 100 watt-hours (Wh) of power per battery]. This size covers AA, AAA, 9-volt, cell phone, PDA, camera, handheld



Lithium-Metal Batteries (up to 2 grams of lithium content): Lithium-metal batteries, often found in cameras and some electronic devices, are permitted in carry-on bags within a limit of 2 grams of lithium. This specification helps mitigate the risk of fire hazards associated with these batteries.



This covers typical dry cell batteries, lithium metal, and lithium ion batteries for consumer electronics (AA, AAA, C, D, button cell, camera batteries, laptop batteries, etc.) Spare (uninstalled) lithium metal and lithium ion batteries are always prohibited in checked baggage and must be placed in carry-on. When a carry-on bag is checked at

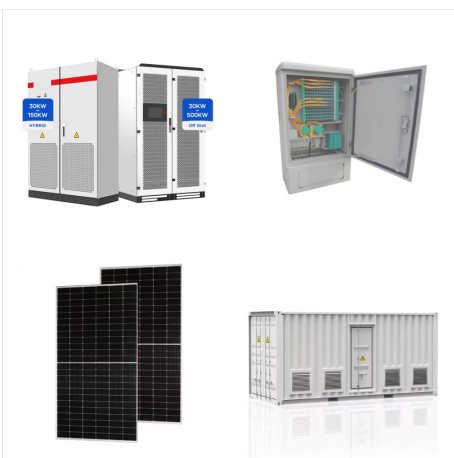
LITHIUM BATTERY ALLOWED ON CARRY ON



Passengers are permitted to travel with lithium ion batteries that contain a maximum of 160-watt hours per battery. Any lithium ion battery containing more than 160-watt hours is prohibited from carriage on all passenger aircraft. Lithium ion batteries installed in a personal electronic device can be transported as checked or carry-on baggage



Additionally, spare lithium-ion batteries with more than 100 watt-hours (Wh) or lithium metal batteries with more than 2 grams of lithium content are not allowed on planes at all. It's important to do your research before packing any type of battery for air travel to ensure compliance with airline regulations and keep everyone safe during the



Removable lithium battery/power bank must be 160 Wh or less. Bags with non-removable lithium batteries, power banks, batteries/power banks that exceed 160 Wh., or batteries that require a tool to be removed (e.g. screwdriver) will not be accepted as checked or carry-on baggage.

LITHIUM BATTERY ALLOWED ON CARRY ON



I have been using an Anker PowerCore 20000 for a while now. This works with most devices, can charge an iPhone over 5 times, and is allowed in your carry-on bag. With your airline's approval, you can take devices that ???