

What are the best button batteries?

CR2032 coin cells are the most popular button batteries. Constructed out of lithium, CR2032 batteries are optimal for quartz watches, calculators, and small PDA devices. These button cells have a typical nominal voltage of 3V and can feature a flat top, button top, or pressure contact terminal.

What is a button battery?

A button cell, watch battery, or coin battery is a small battery made of a single electrochemical cell and shaped as a squat cylinder typically 5 to 25 mm (0.197 to 0.984 in) in diameter and 1 to 6 mm (0.039 to 0.236 in) high - resembling a button.

Where can I buy Energizer 2032 batteries?

Check the label of the product for an indication of child-secure packaging with a bitter coating. Shop for CR2032 batteries in Button batteries. Buy products such as Energizer 2032 Batteries (2 Pack), 3V Lithium Coin Batteries at Walmart and save.

What are button cells used for?

Button cells are used to power small portable electronics devices such as wrist watches and pocket calculators. Wider variants are usually called coin cells. Devices using button cells are usually designed around a cell giving a long service life, typically well over a year in continuous use in a wristwatch.

What type of battery does a hearing aid use?

Relatively high-power devices such as hearing aids may use a zinc-air battery, which has a much higher capacity for a given size, but dries out after a few weeks even if not used. [citation needed] Button cells are usually disposable primary cells, but some are rechargeable secondary cells. Common anode materials are zinc or lithium.

Can a lithium battery be interchangeable with a 1.5 volt battery?

Common lithium primary cells, with a terminal voltage around 3 volts, are not made in sizes interchangeable with 1.5 volt cells. Use of a battery of significantly higher voltage than equipment is designed for can cause permanent damage. International standard IEC 60086-3 defines an alphanumeric coding system for "Watch batteries".



Loopacell High Power Button Cell 3V Lithium Assorted Batteries CR2032, CR2025, CR2450, CR1620, CR1632. 2 4.5 out of 5 Stars. 2 reviews. Save with. Shipping, arrives in 2 days. Only 3 left. 10 CR2025 Energizer Lithium Batteries (2 packs of 5) Add \$ 10 49. current price \$10.49.



EEMB 10 Pack CR2025 Battery 3V Lithium Battery Button Coin Cell Batteries 2025 Battery for Key FOBs, calculators, Coin counters, Watches, Heart Rate Monitors, Glucose Monitors and More. 3.8 out of 5 stars 42. 50+ bought in past month. \$4.29 \$ 4.29 (\$0.43 \$0.43 /Count)



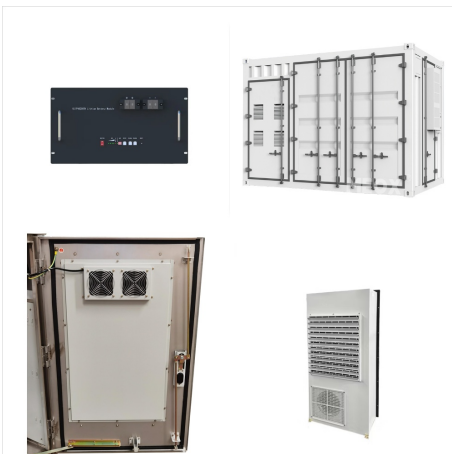
Shop button cell batteries & watch batteries at Jaycar. Click & Collect today or choose free delivery on selected online orders over \$99. Browse the full range online now! CR1632 Lithium Button Cell details. CR1632 Lithium Button Cell. CAT.NO: SB2529. \$4.95. Add to cart. Add to list. Add to list. Available for delivery.



Tenergy 3V CR2032 Batteries, Lithium Button Coin Cell 2032 Battery, Compatible with AirTags, Key FOBs, Calculators, Coin Counters, Watches, Heart Rate Monitors, Glucometer, and More - 100 Pack. 4.5 out of 5 stars. 306. 200+ bought in past month. Limited time deal. \$17.99 \$ 17. 99 (\$0.18 \$0.18 /Count)



They can cause injury if swallowed or placed in the nose or ear and do require urgent medical attention. Even if not swallowed, button batteries lodged in the nose or ear can also cause damage to the eardrum or nasal septum. This can lead to infections and affect breathing, smell and the ability to hear. Lithium coin cell batteries are thinner



Unee Button Battery Charger for Rechargeable Button Battery of 2016 2025 2032 2450 1632 1025 1220 1254 1620 2430 etc., Coin Button Cell Battery Charger(Battery not Included) 4.4 out of 5 stars 20 1 offer from \$999 \$ 9 99



For all these applications VARTA offers a range of Lithium-Ion button cells and battery assemblies in diameters from 9.4 - 16.1 mm with 29 mAh to 155 mAh. CoinPower(R) - the battery family that constantly expands. With several billion rechargeable button cells sold to date, you can trust that we have a solution to meet your battery requirements.



High Power Button Cell 3V Lithium Assorted Battery CR2032 CR2025 CR2450 CR1620 CR1632, 25 Piece Set. 25 Piece Set. 4.4 out of 5 stars. 2,633. 1K+ bought in past month. \$7.95 \$ 7. 95 (\$0.01 \$0.01 /Count) FREE delivery Wed, Nov 6 on \$35 of items shipped by Amazon. Or fastest delivery Mon, Nov 4 .



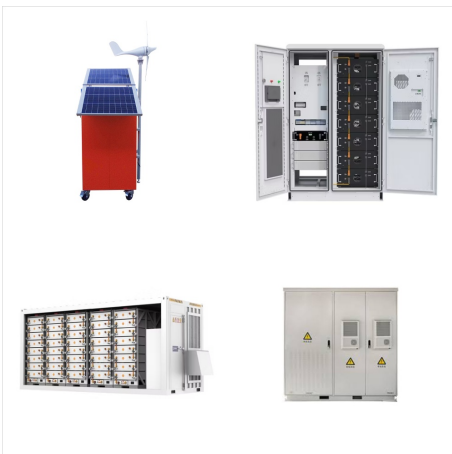
Tenergy 3V CR2032 Batteries, Lithium Button Coin Cell 2032 Battery, Compatible with AirTags, Key FOBs, Calculators, Coin Counters, Watches, Heart Rate Monitors, Glucometer, and More - 10 Pack . 9 Count Pack. Child Safety Features. Compatible with Apple AirTag, Key Fob, and Other Devices. CR2032 Lithium 3V Cell. 2032 Battery, Lithium Coin



But also for long-term applications, e.g. for clocks, car key applications or remote controls where long running time, a slim design and low weight for a battery are important. For all these needs VARTA offers a wide range of primary Lithium button cell types with a voltage of 3.0 V and capacities from 27 mAh up to 560 mAh. Various other



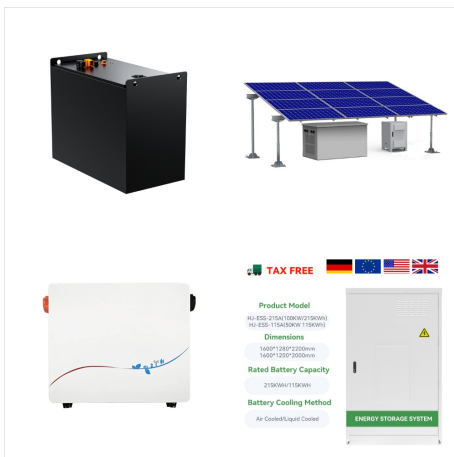
PKCELL 5Pcs CR1225 3V Lithium Battery CR 1225 3V Button Batteries for Thermometer 5-Year Shelf Life. LiCB CR1225 Battery, Long-Lasting & High Capacity CR1225 Lithium Batteries, 3 Volt Coin & Button Cell (5-Pack) 4.6 out of 5 stars



A button cell resembles a button, thus the name. It's a single-cell battery often used to power small devices like hearing aids and wristwatches. Its diameter ranges between five to 25 mm (0.197 to 0.984 inches), while its height dimensions are ???



EEMB 5 Pack CR2450 Battery 3V Lithium Battery
2450 Button Coin Cell Batteries
DL2450???ECR2450???BR2450 for Watch Tea
Lights Votive Candles Alarm System Car Key Fob
Remote Control Calculators Toys Games. 4.6 out of
5 stars. 1,044. 3K+ bought in past month. \$4.00 \$ 4.
00 (\$0.80 \$0.80 /Count)



For example, the popular CR2032 is a Lithium
button cell battery with a diameter of 20mm and a
height of 3.2mm. The LR44 is an Alkaline button cell
battery with a diameter of 11mm and a height of
5.4mm. The LIR1254 is with a nominal voltage of
3.6 to 3.7 volts when fully charged. The "1254??? in
the name refers to its standard size, with a



PoundMax CR 1220 Batteries 3v Lithium Button
Cell Battery Combo Pack - 5 Count. Add \$ 4 99.
current price \$4.99. PoundMax CR 1220 Batteries
3v Lithium Button Cell Battery Combo Pack - 5
Count. Free shipping, arrives in 3+ days. LiCB 20
Pack LR41 AG3 392 384 192 Battery 1.5V Button
Cell Batteries. Add. Now \$ 5 99.



A CR2032 battery is a non-rechargeable (primary) lithium coin or "button" cell battery that is 20mm diameter x 3.2mm thickness. The CR2032 battery has a voltage of 3 volts and a capacity of up to 240mAh, depending on manufacturer specifications.



EEMB CR2032 Batteries 20PACK 2032 Battery - High Performance CR2032 3V Lithium Battery, Button Coin Cell Battery DL2032, ECR2032, LM2032 for Watches, Calculators, Key Fobs, Smart Sensors. Try again! Details . Added to Cart. spCSRF_Treatment. Add to cart . Try again! Details . Added to Cart. spCSRF_Treatment. Add to cart .



Button cell batteries, also known as coin cell batteries, are small, round batteries commonly used in small electronic devices such as watches, calculators, and hearing aids. With so many different sizes and types available, it can be challenging to choose the right battery for your device. In this article, we will provide a comprehensive guide



1.1 Constructions of Lithium Cells 4???5 1.2 Characteristics and Applications 6 1.3 Applications for Primary Lithium Cells 7 1.4 Selection Guide 8 2. CR PRIMARY LITHIUM BUTTON CELLS 9???18 2.1 Types ???Technical Data 10 2.2 Assemblies 11???13 2.3 Performance Data 14???18 3. CR HIGH CAPACITY PRIMARY LITHIUM CYLINDRICAL CELLS 19???24



Tenergy 3V CR2032 Batteries, Lithium Button Coin Cell 2032 Battery, Compatible with AirTags, Key FOBs, Calculators, Coin Counters, Watches, Heart Rate Monitors, Glucometer, and More - 100 Pack. 4.5 out of 5 stars. 354. 600+ bought in past month. \$20.99 \$???



The most common types of button cell batteries are lithium and alkaline, with lithium batteries providing a higher voltage and longer life compared to alkaline batteries. When it comes to testing button cell batteries, it is important to have the right equipment on hand. This includes a multimeter with a voltage setting and a battery capacity



This 20-pack of lithium ion button cell batteries is designed with air- and liquid-tight seal locks in the power until it's needed thanks to the improved design, which includes dual crimps, a new zinc composition, and anti-corrosion components. It is applicable to a wide range of models, including CR2032, 2032, CR2032BP, DL2032, ECR2032



3. Several common button cell battery types: ?? CR button cell models: commonly used are CR2016, CR2032, CR2025, where CR means lithium manganese dioxide battery, the next four digits indicate the size, such as CR2032 is a diameter of 20mm, the height of 3.2mm 3V button cell. LiMnO₂ Button cell - CR2032 . ??? AG series button cell model:



What Are LR44 Batteries?. The LR44 Battery is a small button cell battery of alkaline composition. The LR44 is a very common battery and is produced by many large brands such as Toshiba, Maxell, Energizer, and more. The LR44 battery is also widely produced by smaller companies and private label battery manufacturers, for example Tianqiu produces the ???