

How many amps can a lithium battery charge?

Regardless, these require a lithium charge profile capability and provide anywhere from 30 to 80 amperes of charging current. Explore E360's converter charging options. The real muscle of the lithium battery charging family, inverter chargers have a higher amperage charging capability than portable or converter chargers.

How do you charge a lithium battery?

The best way to charge a lithium battery is to have a device that is specifically designed to charge lithium batteries that operates in a safe range between low temperatures (freezing) and high temperatures. Can I charge a lithium battery with a regular battery charger?

Can a generator charge a lithium battery?

Generators can also be used to charge lithium batteries, providing a convenient source of power when other charging options are unavailable. Using a charger specifically designed for lithium batteries and compatible with your system is required for safe and efficient charging.

How long does it take to charge a lithium battery?

The time it takes to charge a lithium battery depends on several factors, including the power output of the charger and the capacity of the battery. Generally, charging a lithium battery can take anywhere between 1-4 hours, depending on the specific charger and battery combination.

How does a lithium battery charger work?

When the charger's applied voltage is higher than the open-circuit battery voltage, the charging current flows. During this process, the battery's open-circuit voltage increases, approaching the applied voltage of the charger. Lithium battery chargers can behave in several different ways during the charging process.

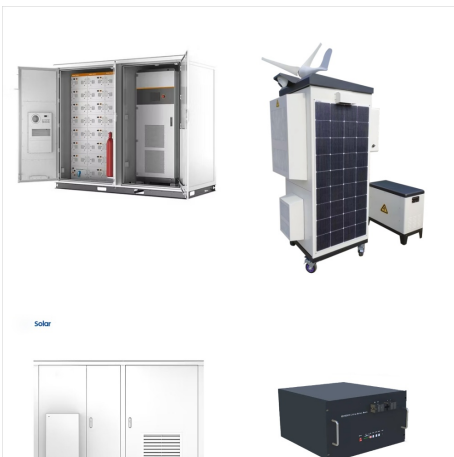
Do lithium ion batteries need a high charge voltage?

Data suggests that maintaining a charge between 20% and 80% can help preserve battery health longer. This myth confuses lithium-ion batteries with nickel-based batteries, which initially require a high charge voltage. Lithium-ion batteries operate differently.

LITHIUM BATTERY CHARGING AMPS



Lithium Polymer Charging/Discharging & Safety Information
Lithium Polymer Safety Tips: Lithium Polymer (LiPo) cells are a tremendous advance in battery technology for RC, UAS, UAV, Drones, and Robotics use. However, due to the chemistry of lithium cells, there is a possibility of fire if not properly charged and c



LiTime 10 Amp Lithium Battery Charger 14.6V AC-DC LiFePO4 Lithium Battery Charger with Anderson Connector LED Indicator Charger Special for Deep Cycle Rechargeable Batteries of Car, Truck, Boat, RV . Visit the Litime Store. 4.4 4.4 out of 5 stars 140 ratings | Search this page .

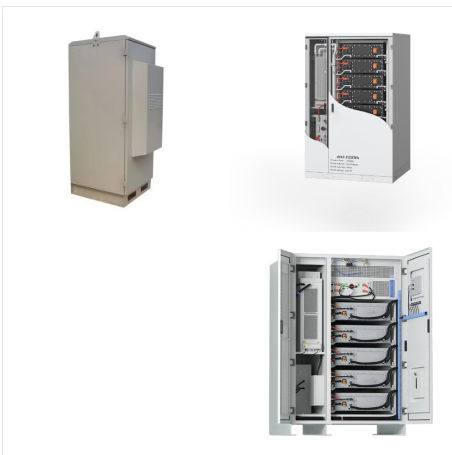


How to choose an ECO-WORTHY lithium battery charger? Can I charge my lithium battery with a lead-acid charger? Lithium batteries are not like lead-acid and not all battery chargers are the same. A 12V lithium battery fully charged to 100% will hold voltage around 13.3V-13.4V. Its lead-acid cousin will be approx 12.6V-12.7V.

LITHIUM BATTERY CHARGING AMPS



Lithium-ion batteries have been the preferred type of battery for mobile devices for at least 13 years. Compared to other types of battery they have a much higher energy density and thus a



To figure out how long to charge a lithium-ion battery, divide its capacity (in Ah) by the charging current (in Amps). For instance, a 100Ah battery charged at 20A will take about 5 hours to charge fully. How long does it take to charge a lithium battery? Charging a lithium-ion battery takes 2-6 hours, depending on its size and the charger's



Using a Solar Lithium Battery Charger: This small, portable device can be used for charging lithium batteries. We only need to charge our LiFePO₄ battery off of AC power 1 or 2 times per year, usually when we have many days with low solar gain. Product Review: 50 Amp Lithium Iron Phosphate Battery. Bluetooth Lithium Iron Phosphate Batteries

LITHIUM BATTERY CHARGING AMPS



Lithium Battery Charging Temperature. The temperature range of lithium battery charging :
Lithium ion Batteries: 0~50??? Lithium iron Batteries: 0~60??? In fact, when the temperature is lower than ideal temperature, the charging rate will be slower, and when the temperature is lower than the battery can tolerate, the battery will go on strike.



Divide the amps/hour of the charger by the amps of the battery unit???a 100-amp/hour charger will fully charge a 50-amp battery in approximately two hours. Lithium-ion batteries have low internal resistance, so they can take all the electric current the charger delivers, thereby charging faster.



Compact, yet powerful lithium jump starter rated at 1,000 Amps - up to 20 jump starts on a single charge. DeWALT Professional Battery Booster Kit with 20V Lithium Battery Pack Plus Charger. Add to Cart. Product Rating is 0. 4.7 (6) \$89.98. Sale. CAT 1,200A Peak Li-Ion Jump Starter. Add to Cart. Product Rating is 0. 4.9 (21) \$125.99.

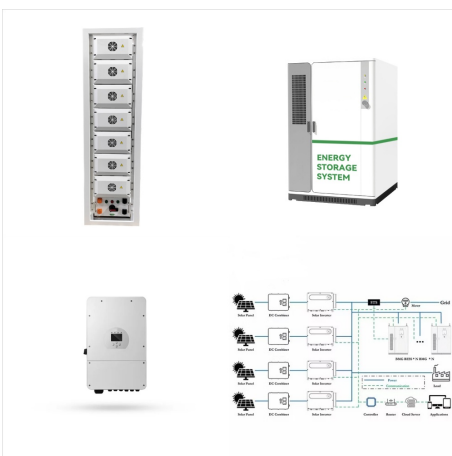
LITHIUM BATTERY CHARGING AMPS



Battery charger for Dakota Lithium batteries and deep cycle batteries. 15% Off ??? Code: SeasonEndSale ??? Exclusions Apply, Valid 10/28 ??? 11/30. For example, a 3 amp charger would charge a 10Ah battery in 3.3 hours ($10 \text{ Ah} / 3 \text{ Amps} = 3.3 \text{ hrs}$). *Please note for safety the amp rating should not exceed the amp hour rating of the battery, for



Explore the truth behind common lithium-ion battery charging myths with our comprehensive guide. Learn the best practices to enhance your battery's performance and extend its lifespan.



There are 3 recommended ways, LiFePO4 lithium battery charger, solar panel and generator, click for details. (Ah for Amp Hours) by the charger output (A for Amps). For example, a 12V 100Ah LiTime LiFePO4 Lithium Battery can be charged from empty to full in 10 hours with a LiTime 12V 10A LiFePO4 charger

LITHIUM BATTERY CHARGING AMPS



2. 20-Amp Smart Battery Charger, Lithium, LiFePO₄, Lead-Acid. Brand: HTRC; Manufacturer: HTRC-RC; Color: Black; Dimensions: Height: 1.968503935 Inches Width: 3.543307083 Inches Length: 6.1417322772 Inches ; This 20-Amp Smart Battery Charger is a great way to keep your car battery charged and ready to go. It works with Lithium, LiFePO₄, ???

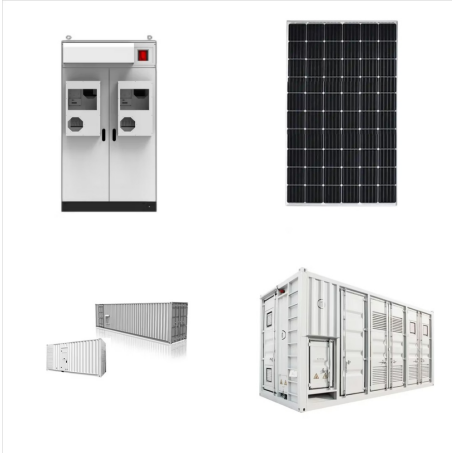


Understanding the Charging Process. Unlock the secrets of charging LiFePO₄ batteries with this simple guide: Specific Charging Algorithm: LiFePO₄ batteries differ from others, requiring a tailored charging algorithm for optimal performance. Distinct Voltage Thresholds: Understand the unique voltage thresholds and characteristics of LiFePO₄ batteries compared ???

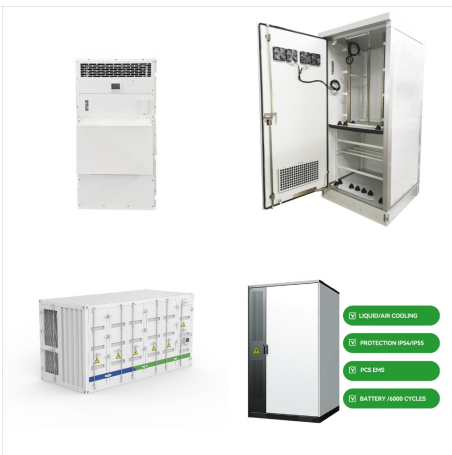


24V Lithium Battery Charging Voltage: A 24V lithium-ion or LiFePO₄ battery pack typically requires a charging voltage within the range of about 29-30 volts. Specialized chargers designed for multi-cell configurations should be considered, and adherence to manufacturer guidelines is crucial for safe and efficient charging. 48V Lithium Battery

LITHIUM BATTERY CHARGING AMPS



$100\text{Ah} * 0.5\text{C} = 50\text{ Amps}$. If you have a 12V 200Ah battery, the maximum charge current is as follows: $200\text{Ah} * 0.5\text{C} = 100\text{ Amps}$. Now if you have a 48V 100Ah battery (5kw server rack) the charge current is the following: $100\text{Ah} * 0.5\text{C} = 50\text{ Amps}$. We can see that the maximum recommended charge current depends on the battery capacity (Ah), not the voltage.



This Fast 48V lithium charger is rated at 15 amps and will charge a 48V 50Ah battery in <3.5 hours (41 reviews) Include Dakota Lithium 48V 96Ah Golf Cart Battery (+ \$ 3,299 Original price was: \$3,299. \$ 2,699 Current price is: \$2,699.



Charging properly a lithium-ion battery requires 2 steps: Constant Current (CC) followed by Constant Voltage (CV) charging. A CC charge is first applied to bring the voltage up to the end-of-charge voltage level. You might even decide to reduce the target voltage to preserve the electrode. Once the desired voltage is reached, CV charging begins

LITHIUM BATTERY CHARGING AMPS



LiTime lithium battery charger has the 0V function to activate the dead lithium battery. What amp setting should I use to charge my deep cycle battery, 2 or 10 amps? The appropriate amp setting for charging your deep cycle battery largely depends on its capacity, usually measured in amp-hours (Ah). Charging at 10 amps will generally be



This 36V lithium charger is rated at 8 amps and will charge a 36V 60Ah battery in <8 hours or a 36V 100 Ah battery in <12 hours. Be The First to Know Get access to exclusive deals, hear about new products before anyone else, and enjoy tips, tricks, and DIY hacks from our community of experts.



Lithium-ion batteries are a significant advancement over earlier battery types. Lithium-ion batteries charge quicker, last longer, and offer a higher power density than conventional batteries, allowing for more battery life in a compact package. It's not unusual for a lithium-ion battery to last the maximum 500 charge/discharge cycles.

LITHIUM BATTERY CHARGING AMPS



Stage 1 charging is typically done at 10%-30% (0.1C to 0.3C) current of the capacity rating of the battery or less. Stage 2, constant voltage, begins when the voltage reaches the voltage limit (14.7V for fast charging SLA batteries, 14.4V ???



For example, you can use a 24V charger to charge a battery bank consisting of two 12V batteries in series. To determine the amount of amps you need in your boat battery charger, look at the Ah rating of your battery. Ideally, the amp (A) rating of your battery charger should be around 20-33% of your battery's amp hour (Ah) rating.



? It would take a 10-amp charger about 11-12 hours to recharge a dead battery to nearly 100% full charge. To calculate the total charge time for a battery, a good rule of thumb is to divide the battery's amp hour rating by the ???

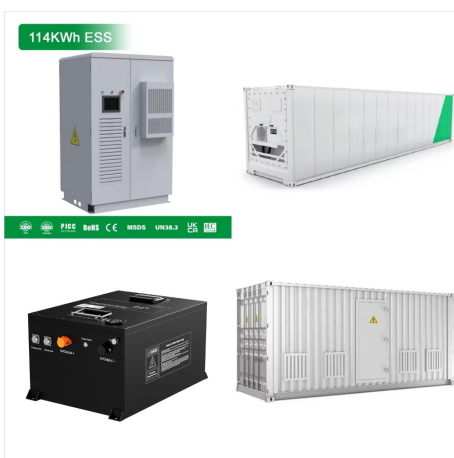
LITHIUM BATTERY CHARGING AMPS



Voltage determines the number of cells in series (S) in your Lipo battery, impacting the total charging amps. Part 4. How to calculate the best charging amps for lipo battery? Calculating the best charging amps for a Lipo battery involves a simple formula. This ensures you charge your battery safely and efficiently.



This calculator helps you estimate the time required to charge a battery pack based on its capacity, charging current, and current state of charge (SoC). It supports various units for battery capacity (Wh, kWh, Ah, mAh) and charging current (A, mA). How to Use. Enter the battery capacity in the desired unit (Wh, kWh, Ah, or mAh).

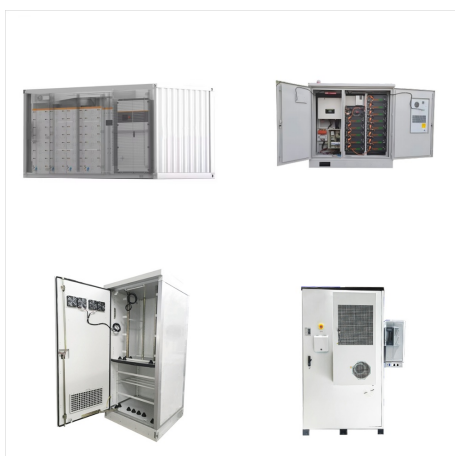


Lithium-ion battery packs should not be totally depleted and recharged frequently ("deep-cycling"). Utilising only 20 or 30 percent of the battery's capacity prior to recharging will greatly improve your battery life. Five to ten shallow discharge cycles are roughly equivalent to 1 full discharge cycle.

LITHIUM BATTERY CHARGING AMPS



Manufactured with built-in safety features and smart charger technology, Battery Tender(R) chargers fully recharge then maintain your battery at its optimal level???without the damaging effects of overcharging caused by trickle chargers. 4 Amp Lead Acid & Lithium Selectable B SKU: 022-0209-WAL Sale price \$69.97. Add to cart. Shop by



Using a 5 amp Harley-Davidson(R) Dual-Mode Battery Charger, a fully discharged 4Ah Lithium LiFE battery can be charged in just 48 minutes, while an 8Ah Lithium LiFE battery can be recharged in 96 minutes. A lithium battery should not be charged with a standard battery charger that includes a desulfator mode.