

Which battery is best for remote control?

Lightweight lithium ion batteries are designed for long-lasting use. Alkaline batteries- Generally less expensive than lithium batteries, these batteries are among the most commonly used types in the world. Cost-effective alkaline batteries may be a good choice for remote control devices for which changing the battery isn't too inconvenient.

What are the different types of remote control batteries?

Some batteries for remote controls are single-use, while others are rechargeable. Two of the most common remote control battery types include rechargeable lithium ion and alkaline batteries. Rechargeable lithium ion batteries - These remote control batteries are easy to charge and minimize the need for purchasing replacement batteries.

Are alkaline batteries good for remote control devices?

Cost-effective alkaline batteries may be a good choice for remote control devices for which changing the battery isn't too inconvenient. Shop for Remote Control Battery at Batteries Plus Bulbs. Keep your most-used devices charged with our array of batteries for remote controls.

Which AA battery is best for a TV remote?

Just like the L92VP, Energizer's L91 Ultimate Lithium batteries are the longest-lasting AA batteries around. Perfect for larger applications such as DirectTV remotes, L91 batteries are a top performer capable of lasting for years to come. Energizer's AA Ultimate Lithium batteries can power a daily used TV remote for 6-9 months. 3.

Do TV remotes need batteries?

Ultimately tv remotes are only as useful as the batteries used to power them. Most TV remotes accept AAA batteries as their power source. For bigger remotes having added functionality such as DirectTV remotes, AA batteries are required. Battery Products has all the batteries you need for tv remotes and remote controllers.

How many batteries can Energizer charge a TV remote?

Battery Products sells Energizer's 1 hour NiMH charging stand, boasting the capability to charge up to 4

LITHIUM BATTERY FOR REMOTE CONTROL



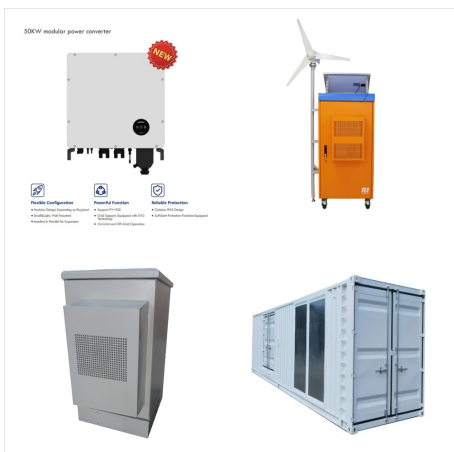
batteries at once. Energizer's AAA NiMH rechargeable batteries can power daily TV remote usage for around 3 months. Are lithium or alkaline batteries better for TV remotes?



MGI Zip Navigator All Terrain Electric Golf Cart - 36 Hole Lithium Battery - Remote Control -Black 104. \$1,595.00 \$ 1,595. 00. 2:15 . MGI Zip Navigator All Terrain Electric Golf Cart - 36 Hole Battery - Remote Control - Accessories Included (Multi-Purpose Clip, Drink, Umbrella, GPS-Phone, & Scorecard Holder), Gloss Black-Matte Black 38.



Buy KITOSUN CR2025 Batteries 3V Lithium Cell - 3 Volt CR 2025 Coin Button Lithium Battery Replacement for Mazda Mercedes Car Key Fob Remote Control LED Light Candles Doorbell Heart Rate Monitor (5Pack): 3V - Amazon FREE DELIVERY possible on eligible purchases taylor scale battery replacement,garage door remote battery,pc battery,dime



Buy hilocell 10 Pack CR2025 Lithium 3V Coin Battery, 3 Volt CR 2032 Button Cell Batteries, Long-Lasting High Capacity 2025 Battery for Key Fobs, Remote Control, LED Candles 10 Count: Electronics - Amazon FREE DELIVERY possible on eligible purchases

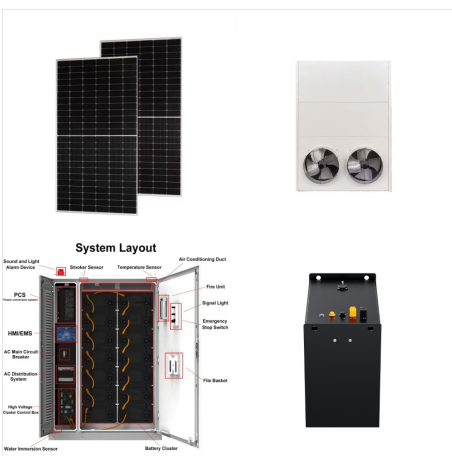
LITHIUM BATTERY FOR REMOTE CONTROL



The source of power for your remote control is a battery, and the longevity of the battery determines how long it will power the remote control before needing to be replaced. The longevity of a battery depends on various factors, including the type and quality of the battery, the usage of the remote control, and the power requirements of the



MGI Zip Navigator All Terrain Electric Golf Cart - 36 Hole Lithium Battery - Remote Control - Accessories Included (Multi-Purpose Clip, Drink, Umbrella, GPS-Phone, & Scorecard Holder), Black . Visit the MGI Store. 4.4 4.4 out of 5 stars 95 ratings. \$2,149.00 \$ 2,149. 00

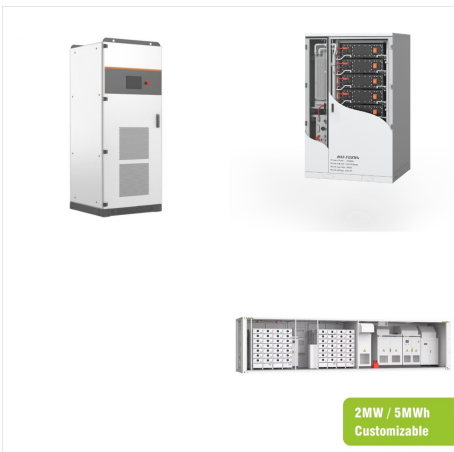


Cheap batteries good for remote controls One of the best-known battery brands, the Energizer Max AA, proved itself in the high-drain test, making this range of batteries particularly suitable for heavy use. The units are generally well priced, but you can get slightly cheaper batteries if you want a store for general-purpose use.

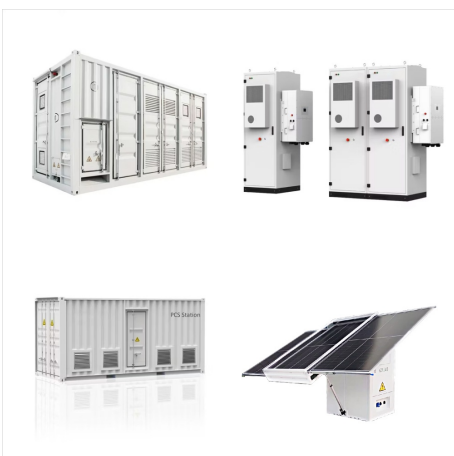
LITHIUM BATTERY FOR REMOTE CONTROL



3.7V 800mah Li-ion Battery 2Pack with USB
Chargers SM-2P Plug RC Rechargeable Battery
Compatible with Remote Control Cars E35 DE38
DE40 DE50 DE55 TB202 TM141 Toy Cars 2Pack.
4.4 out of 5 stars Child Safety Features, 2 Count
Pack, Lithium Coin Battery for Key Fob, Car
Remote, Glucose Monitor, CR Lithium 3 Volt Cell. 2
Count (Pack of 1) 4.5



Group 24 OEM Automotive Case size (directly
replace stock battery).; LxWxH: 10.25 x 6.85 x 8.75
inches.; Amp Hour Options: 40 Ah, or 60 Ah.; High
Power: 40Ah=1500CA, 60Ah=1800 Cranking
Amps.; Exclusive RE-START Technology: Wireless
Jump-Starting built-in; just press the button on your
Keyfob remote.; Complete Battery Management
System built-in.; Ultra Lightweight: Drop ???



Lithium Battery. 6 Count Pack. Child Safety
Features. Compatible with Apple AirTag, Key Fob,
and other devices. CR2032 Battery Lithium Coin
Battery. 2450 Button Coin Cell Batteries
DL2450???ECR2450???BR2450 for Watch Tea
Lights Votive Candles Alarm System Car Key Fob
Remote Control Calculators Toys Games. 4.6 out of
5 stars

LITHIUM BATTERY FOR REMOTE CONTROL



The lithium remote allows for left, right, forward and reverse control, as well as speed control. There is a built-in remote control holder and a USB cord for charging. Straight Tracker Technology. The ZIP Navigator AT 2024's Straight Tracker Technology keeps the electric cart on track regardless of the terrain it moves on.



The Bat-Caddy(R) X3R??? Remote Control Caddy is durable, easy to use, and the best remote-controlled Bat-Caddy for hilly courses. With our One-Click central lock frame and fixed handle, SLA, and Lithium battery options, the X3R is the lowest-priced remote control electric golf caddy on the market today!



Having trouble with your Samsung TV remote battery replacement? Learn how to easily replace samsung tv remote batteries with this step-by-step beginner's guide. Voice Control remote: Some slim or compact remotes may use a single 3V lithium coin cell battery, such as a CR2032 or CR2025. By identifying your remote model and its battery

LITHIUM BATTERY FOR REMOTE CONTROL



Buy Afoosoo CR2025 3V Lithium Coin Battery ??? 5 Pack CR 2025 Battery for Car Remote Control Key Fob Mercedes Benz MB Fitbit Zip Watch Garmin Vivofit Jr 3 Thermometer Garage Door Opener Sensor Replacement on Amazon FREE SHIPPING on qualified orders



Amazon : BATCADDY X4R Advanced Lithium 36-Hole Battery Powered Golf Push Cart with Remote, Dual Motor, 9-Speeds and Reverse, Cruise Control, Anti-Tip Wheel, and Downhill Control, Titanium Silver : Sports & Outdoors The X4R electric golf push cart fully directional remote control gives you the freedom to walk like a pro ;

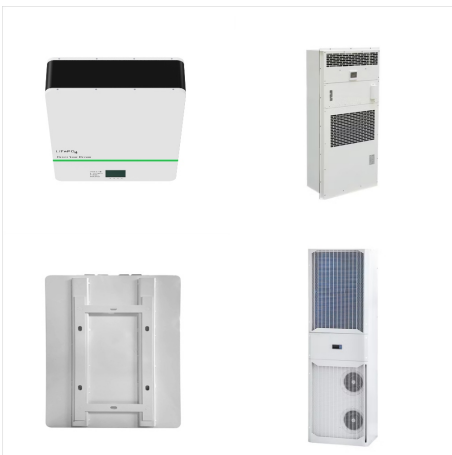


Motorized blinds and shades are often powered through a lithium battery pack (usually AA batteries) but some also have a rechargeable motor that connects to an outlet with a usb cord when it needs charging. The life of a battery pack versus the life of a single charge on a rechargeable motor is about the same.

LITHIUM BATTERY FOR REMOTE CONTROL



Battery packs have powered decades of fun for remote control enthusiasts. There was a time when the RC hobby was split between gas-powered and battery-powered vehicles, boats, and aircraft; this divide was based on the greater horsepower that could be generated by fuel-burning engines, but times have significantly changed thanks to major advances in battery technology.



A best selling battery powered remote control electric golf caddy and loaded with features, the Bat-Caddy X3R Lithium is available with free shipping from Motogolf. For a limited time, we are offering the Brand New BATCADDY(R) X3R Lithium, Remote Control Electric Golf Trolley, for \$949.95 (Advanced Lithium SL Battery - 5 lbs/Up to 18



You also have the option to operate it by remote control. With a battery that can last up to 27 holes, this is likely the best electric push cart for a full golf day. Only the MGI Zip X1, MGI Zip Navigator, and Cart-Tek GRI-1500Li V2 last longer. 2. MGI Zip X1 Electric Golf Caddy ??? Best Budget Option long-lasting lithium battery.

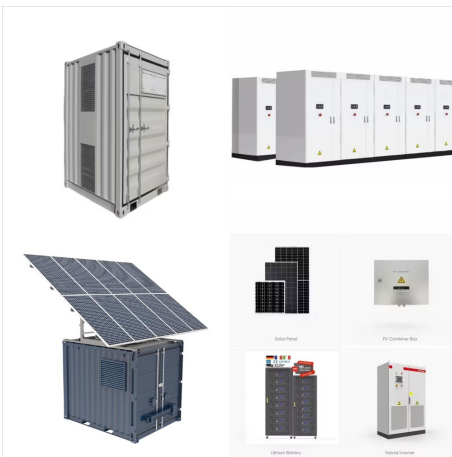
LITHIUM BATTERY FOR REMOTE CONTROL



LONG-LASTING LITHIUM BATTERY: The Volt is operated by a powerful lithium battery that charges in just four hours and keeps the cart running for up to 36 holes; with the option to disengage the battery to seamlessly perform as a manual push cart
???Electric Cart, Remote Control, Battery, Battery Charger : Additional Information. ASIN



Artisan Power Battery Replacement for Poly RealPresence Remote Control | Lithium-Ion Rechargeable Battery | USB Charge | Best for Series 300, 310, 500, 700, HDX | Replaces Battery Number BW7535. Synergy Digital Remote Control Battery, Compatible with URC MX-880 Remote Control, (Li-ion, 3.7V, 1050mAh) Ultra High Capacity, Replacement for



Battery Life. One of two types of batteries is used in powered push carts: lead acid or lithium. In the carts we tested, we found that lithium batteries provide longer running life and can keep your cart rolling for 27-plus holes. All models tested last ???

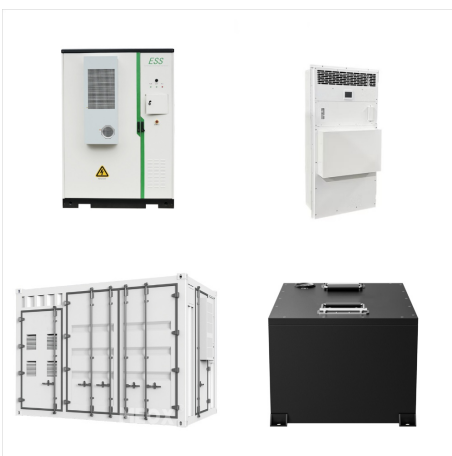
LITHIUM BATTERY FOR REMOTE CONTROL



Up to 8% cash back? Energizer A23 Batteries provide reliable power to your important gadgets. These mini batteries are compatible with a variety of devices, including your keyless ???



When to Go For Ufine Remote Control Battery. Ufine remote control battery is the best all-rounder battery for all power needs. You should buy this battery to get a long lifespan and more backup. However, you need to double-check that the battery dimensions should match your remote control device. Part 4. Best long-lasting battery



Battery: 30v lithium battery. Today's Best Deals. Check Amazon. Reasons to buy + Premium looks and materials throughout + High-quality, bright touchscreen + is limited then you might be best to consider a push trolley. That said, if you're sold on a remote control model then there are some designs that result in a more compact product

LITHIUM BATTERY FOR REMOTE CONTROL



Amazon : Super E Caddy The Pro Wireless Remote Control Electric Golf Cart, Golf Push Cart with Built-in 6 Pack Cooler, Seat, USB Port and Holders, 24V Lithium Battery Lasts 27 Holes : Sports & Outdoors The Super E Caddy works on a rechargeable lithium-ion battery that lasts for 27 hours on one charge. has a variable-speed multifunctional



They last long and dont have to replace that often in my remote control.Excellent Battery!.. notch quality, exceeded my expectations, This Energizer 1632 Lithium Coin 3-Volt Battery delivers big time on long-lasting, dependable power for your coin-battery-operated items. From heart rate or glucose monitors, to remotes, keyless entry



Description. Lithium-Ion Replacement Battery for the 2014-Current Remote Control Panel, Item 77470. This battery is charged through the remote control docking Station, item 78509.. View Diagrams & Part Compatibility

LITHIUM BATTERY FOR REMOTE CONTROL





Benefits ??? 9 forward speeds ??? Cruise control
??? Auto-timed distance control. Drawbacks ???
Lithium batteries are an upcharge. The Batcaddy X4 Sport is a great choice that comes at roughly



MGI Zip Navigator Electric Golf Cart - 36 Hole
Lithium Battery - Remote Control - Accessories
Included (Drink Holder, Umbrella Holder, Rear
Wheel Covers, Multi-Purpose Clip & GPS Phone
Holder) Visit the MGI Store. 4.4 4.4 out of 5 stars
176 ratings | Search this page .