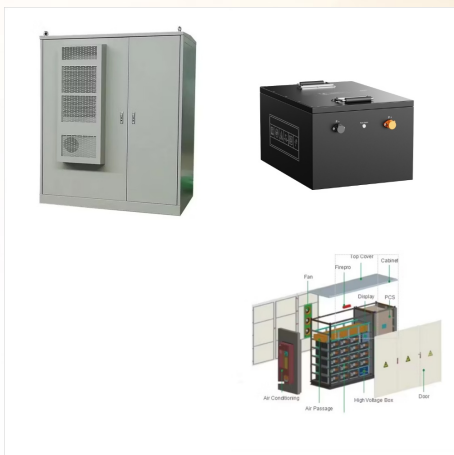




With superior charge efficiency, zero maintenance, and longer lifespan, LiTime lithium RV batteries are the ultimate cost-effective option. RV Lithium Battery Best Sellers. 12V 100AH GROUP 24. Built-in BMS 100A; Nominal voltage: 12.8V: Nominal capacity: 100Ah:



???Perfect Replacement for Lead-acid Batteries???LiTime's 12V 100Ah TM lithium battery uses Grade A LiFePO4 cells for exceptional quality, higher energy density, and greater power, certified by UL testing for highest level of safety. The 12V 100Ah TM LiFePO4 battery has an impressive 10-year lifespan, with 4000+ cycles @100% DOD (6000 cycles



LiTime Rechargeable battery provides 4000+ cycles (10 times longer) & a 10-year lifetime compared with 200-500 cycles & a 3-year lifetime in lead acid battery, and 2000-3000 cycles ???



LiTime LiFePO4 battery has a 10-year service life, which is longer 3 times than the Lead Acid Battery's 3-year lifetime. 1/3\* Lightweight LiTime 12V 200Ah LiFePO4 Battery weighs only 48.28 lbs, compared to lead-acid batteries, lithium battery provides 56Wh/lb energy density, and only 1/3\* the weight of the lead-acid battery, which makes



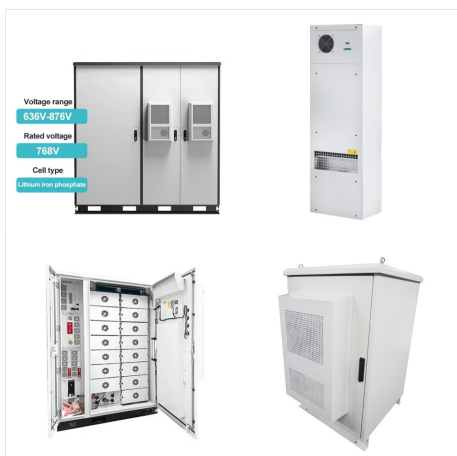
Meet LiTime's Latest Invention - Your 2024 Must-have Breakthrough LiFePO4 Battery. Bluetooth 5.0, Auto-connection, smart control & monitor battery with LiTime App; Self-heating function secures charging safely in freezing weather



Disclaimer: LiTime sent this product to us for free for a review. That does not affect our opinion about the product. In this article, we list both what we like and dislike. Read more about this here. LiTime's Smart Battery Can Be Monitored With Your Smartphone. It's time to review another lithium battery from LiTime. This time we're



The LiTime lithium battery sets the standard for unmatched durability and longevity. With industry-leading 4000+ recharge cycles at 100%DOD, it delivers decades of dependable service far surpassing standard lead-acid batteries. Designed to withstand all sorts of conditions, the rugged casing protects against water, dust and corrosion while



Bottom Line. If you're in need of a robust and reliable lithium battery for your off-grid adventures, the LiTime 12V 200Ah LiFePO4 Lithium Battery is an excellent choice. Don't wait any longer to upgrade your power ???



EV-Grade LiFePO4 Cells: LiTime 24V 100Ah  
Lithium ion battery is assembled with Automotive Grade LiFePO4 Cells with UL certification, offering higher energy density, stable performance, greater power, and a low 3% self-discharge rate. 100% DOD & 10-year lifetime: LiTime lithium battery Provides 4000~15000 cycles, with a 10-year



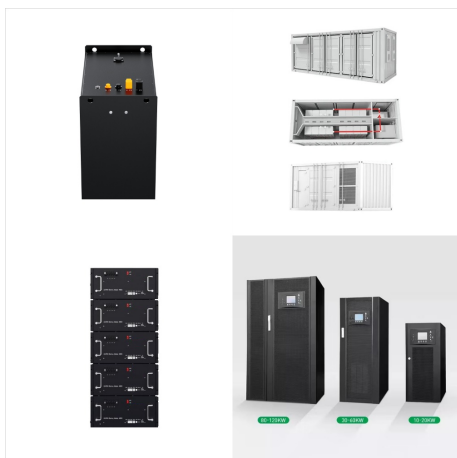
LiTime LiFePO4 lithium battery chargers are featured with BMS to protect the battery from over-temperature, reverse polarity, short circuit, and over-voltage. What's more, LiTime LiFePO4 Lithium battery chargers have 0V function, which can jump start the dead lithium batteries.



Solar lithium iron phosphate batteries ??? also called solar LiFePO4 batteries ??? are currently the best lithium batteries for solar systems. Their particular chemistry makes them the most cost-effective option for homes and businesses. They're also safer and less toxic than alternative solar battery types.



Compared with the 200-500 cycles and 3-year lifespan of lead-acid battery, our lithium battery has more than 4000 deep cycles and a 10-year lifespan, which means that the lifetime of one of our 12V 50Ah LiFePO4 battery is equivalent ???



Yes, you can charge LiTime LiFePO4 lithium batteries with solar panels. Here are 3 reliable ways to charge. 1. Using Solar Panels. The LiTime 12V 460Ah battery can be fully charged by in one day (with effective sunshine 4.5hrs/day) by 1850W solar panels. It may take more than one day to fully charge the battery by ???1200W solar panels since



This super-powerful and compact LiFePO4 lithium battery weighs only 19 lbs (8.62 kg) while delivering high energy density, impressive charge-discharge performance, and exceptional safety and reliability. smart control & monitor battery with LiTime App Low-temp cut-off protection secures your battery in cold weather LiTime's latest BMS

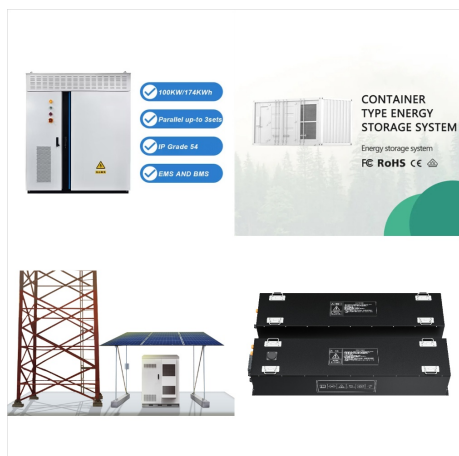


LiTime LiFePO4 lithium battery chargers are featured with BMS to protect the battery from over-temperature, reverse polarity, short circuit, and over-voltage. What's more, LiTime LiFePO4 Lithium battery chargers have 0V function, ???





Note: Tables 2, 3 and 4 indicate general aging trends of common cobalt-based Li-ion batteries on depth-of-discharge, temperature and charge levels, Table 6 further looks at capacity loss when operating within given and discharge bandwidths. The tables do not address ultra-fast charging and high load discharges that will shorten battery life. No all batteries ???



???Perfect Replacement for Lead-acid Batteries???LiTime's 12V 100Ah TM lithium battery uses Grade A LiFePO4 cells for exceptional quality, higher energy density, and greater power, certified by UL testing for highest level of safety. The 12V 100Ah TM LiFePO4 battery has an impressive 10-year lifespan, with 4000+ cycles @100% DOD (6000 cycles



Shop LiTime Black Friday deals for the best LiFePO4 lithium batteries! Up to 50% off discount. Power your RV, trolling motor, golf cart and off-grid living with reliable energy. LiTime 12V(14.6V) 60A LiFePO4 Lithium Deep Cycle Smart Battery Charger. \$195.99. \$379.99. Add To Cart. LiTime 12V (14.6V) 80A Mountable LiFePO4 Battery Charger



LiTime LiFePO4 lithium battery has about twice the useable capacity as lead acid and AGM batteries. So, if your goal is to get more usable battery time (Amps) then you should upgrade to a battery with the same Amps (or more). I.e. if you replace a 100amp battery with a LiTime 12V 100Ah LiFePO4 Lithium Battery, you will get about double the



70% lighter weight ??? A 100Ah LiTime lithium battery weighs just 24 lbs vs an 80 lb lead-acid with the same capacity; 4X longer lifespan ??? LiTime batteries last for >4,000 cycles (10+ years) whereas lead-acid manage 500 cycles max ; Faster charging ??? LiTime's lithium composition can charge in 1-2 hours safely vs 8-16 hours for flooded



No. LiTime LiFePO4 lithium batteries are not intended to be used as starting batteries but deep cycle energy storage, please do not use them to start any devices. If you need the marine starting batteries, visit LiTime 12V 20Ah Marine Cranking or 12V 140Ah Dual Purpose battery to choose.



Decrease quantity for LiTime 500A Battery Monitor With Shunt Increase quantity for LiTime 500A Battery Monitor With Shunt. Subtotal: \$55.99.  
Quantity: 2024 MLF 12V marine battery, best lithium battery for 30~70 lb trolling motors, also suitable for RVs, solar systems, and home energy storage Low-temperature charging cutoff protection



Grade A Automotive Cells & UL Certified 200A BMS  
LiTime's 12V 300Ah lithium ion battery features Grade A Automotive LiFePO4 cells and a UL-certified 200A BMS, ensuring top-tier safety, energy density, power, and stability. Count on our battery for reliable, long-lasting power with minimal self-discharge and robust protection against overcharge, over-discharge, over ???



LiTime 48V 100Ah lithium battery supports up to 16 in parallel form a 48V (51.2V) 1600Ah battery system. Note: Please don't connect the battery in series. To connect in series or parallel, batteries should meet the below conditions: identical batteries ???





Ah AGM battery I use in my RV weighs 68 pounds, the LiTime lithium battery weighs less than 25 pounds. That is a 43 pound difference. At 25 pounds, it's very easy to handle this battery. Imagine the total weight difference if you have four, or sixteen batteries. If you're traveling in an RV or camper van, the weight is always



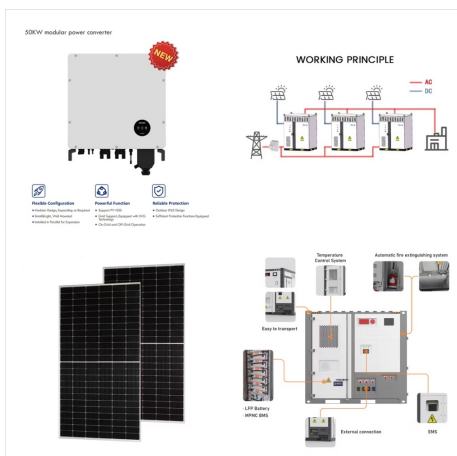
Up to 4% cash back? The LiTime 12V 100Ah Mini LiFePO4 battery supports a maximum expansion capacity of 20.48Wh (max 4P4S battery connected in series and parallel to build a 48V (51.2V) 400Ah battery system), so you can have ???



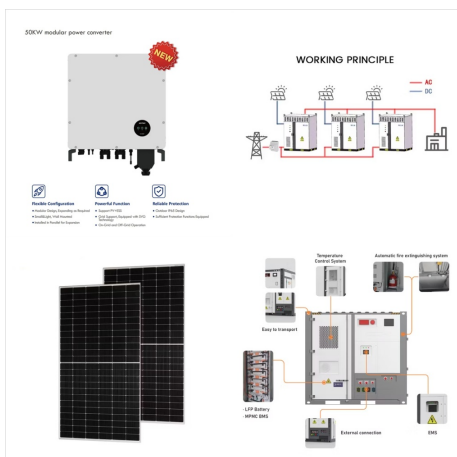
LiTime 12V 100Ah Mini LiFePO4 Lithium Battery, Upgraded 100A BMS, 10-Year Lifespan with Up to 15000 Cycles, Max. 1280Wh Energy LiFePO4 Battery in Small Size, Perfect for RV, Solar, Trolling Motor.



Buy LiTime 12V 12Ah LiFePO4 Lithium Battery, Built-in 12A BMS 153.6W Output Power, 4000+ Deep Cycles& 10-Year Lifetime, Low Self-Discharge, for Fish Finder, Fans, Toys, LED Light, Security Camera, Camping: Batteries - Amazon ???



Powerful Performance LiTime 12V 6Ah LiFePO4 Battery delivers an exceptional performance with higher energy density, greater power, and better stability than traditional lead-acid batteries. 4000+ Cycles & 10 Years Lifespan LiTime 6Ah lithium battery offers ???



Grade A Automotive Cells & UL Certified 200A BMS LiTime's 12V 300Ah lithium ion battery features Grade A Automotive LiFePO4 cells and a UL-certified 200A BMS, ensuring top-tier safety, energy density, power, and stability. Count on ???