

What if a lithium-ion battery refuses to charge?

If you're grappling with a lithium-ion battery that refuses to charge, here are some detailed steps to potentially fix the issue: To start, let's address potential hindrances like debris, dust, or corrosion:

Do lithium batteries have charging problems?

Lithium batteries, known for their high energy density and long cycle life, are commonly used in various electronic devices, from smartphones and laptops to power tools and electric vehicles. Despite their advantages, these batteries can experience charging issues due to several factors.

What should I do if my lithium battery is not charging?

If your lithium battery is not charging, follow these troubleshooting steps to identify and resolve the issue. Test with Another Charger: Use a different charger to determine if the original is faulty. Check Cable Integrity: Look for any signs of wear or damage. Check for Swelling: A swollen battery indicates internal damage and should be replaced.

Why is my lithium iron battery not charging?

The issues might stem from a damaged battery or external factors unrelated to the lithium battery itself. It may require some trial and error as well as battery troubleshooting to uncover the underlying cause. What Are The Factors Affecting Lithium Iron Battery Being Fully Charged?

Should you remove a lithium-ion battery from a smart charger?

With the advent of smart charging technology, removing a lithium-ion battery from the charger is no longer necessary once it's fully charged. Smart chargers are designed to prevent overcharging by cutting off the power once the battery reaches full capacity.

Should lithium-ion batteries be fully recharged before use?

The notion that lithium-ion batteries should constantly be fully recharged to 100% before use is another myth. Data shows that partial charges can be more beneficial. According to Battery University, lithium-ion batteries do not require a complete charge cycle, and partial discharges with frequent recharges are preferable.

LITHIUM BATTERY NOT FULLY CHARGING



Here are the most common reasons why lithium batteries may not charge: 1. Faulty Charger. A malfunctioning charger can prevent the battery from receiving power. Check for: Physical Damage: Inspect the charger for frayed wires or broken connectors. Compatibility: Ensure the charger is compatible with the battery specifications. 2. Battery Age



Lithium-ion Battery Frequently Asked Questions
Lithium-ion Battery Frequently Asked Questions
The green LED light on the battery indicates when the batteries are fully charged; Unplug the battery charger from the mobility device and electrical outlet; Note: If you're charging a Go Go(R) Endurance Li battery box for the very first time or

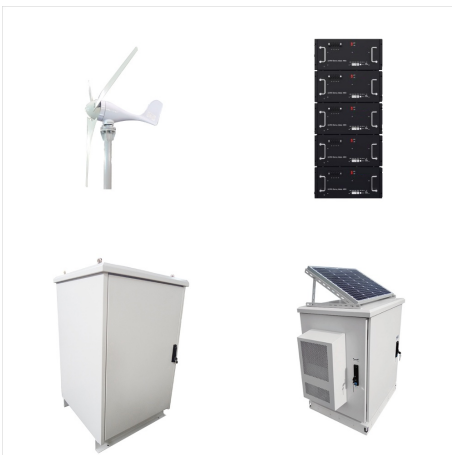


If the onboard charger has a lithium setting, or can be set to 14.4V it will fully charge the battery. Chargers that do not go as high as 14.4V, such as onboard chargers for marine AGM or lead acid batteries that do not have a ???

LITHIUM BATTERY NOT FULLY CHARGING



When a lithium battery is fully charged, it should be removed from the charger to prevent overcharging. Overcharging can cause the battery to heat up, which can lead to a reduction in its overall lifespan. If you notice that your lithium battery is not holding its charge as well as it used to, it may be a sign that it's nearing the end of



Lithium-ion does not need to be fully charged; a partial charge is better. Not all chargers apply a full topping charge and the battery may not be fully charged when the "ready" signal appears; a 100 percent charge on a fuel gauge may be a lie. Discontinue using charger and/or battery if the battery gets excessively warm.

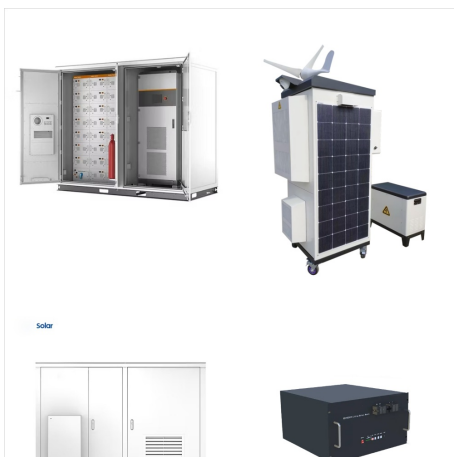


battery charging Lithium Battery.
screenshot-2023-02-16-18-41-00-70-30b6efbd53acd6f2.jpg (281.2 KiB)
screenshot-2023-02-16-18-41-05-60-30b6efbd53acd6f2.jpg (283.3 KiB) It's not fully charged yet, give it more time on charge. Have a look the the Volt / charge plot of your battery. Only at the very end of the charge cycle does the voltage

LITHIUM BATTERY NOT FULLY CHARGING



Sadly for this customer in the above example, his charger was of the type that still required a minimum voltage to detect a connected battery, even in lithium mode, so with the BMS "asleep", it would never send a charging voltage to the BMS to wake it up so that it could start allowing charge into the battery.

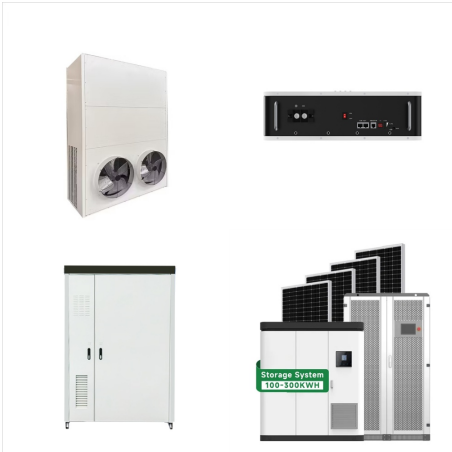


Up to 4% cash back? If you're into tech, dealing with a Lithium-ion battery that won't charge can be a real pain, how to do the battery troubleshooting? Even with a fancy battery bank, you might run into this issue. ???



For optimized battery life, your phone should never go below 20 percent or above 80 percent. It may put your mind at ease when your smartphone's battery reads 100 percent charge, but it's actually not ideal for the battery. "A lithium-ion battery doesn't like to be fully charged," Buchmann says.

LITHIUM BATTERY NOT FULLY CHARGING



- Use a battery charger with lithium battery activation to charge the battery to 12.4V/24.8 V or above. Negative: Confirm that the battery is not in low-voltage protection. Proceed to the remaining steps. 2. Exclude the possibility ???

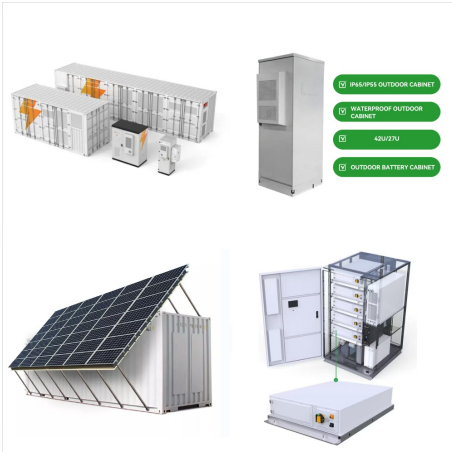


While modern lithium batteries and chargers have safety mechanisms to prevent overcharging, it is generally recommended not to leave a lithium battery charging unattended for an extended period, especially overnight. It is always better to monitor the charging process and unplug the charger once the battery is fully charged.



Lithium-Ion Battery First Charge Myth . Lithium-Ion Battery first charge myth It is a common belief that you must fully charge a new lithium-ion battery before using it. This is actually a myth. You can use your new battery right away without damaging it. In fact, it's better to use it sooner than later. A lithium-ion battery consists of two

LITHIUM BATTERY NOT FULLY CHARGING



Charging a lithium-ion battery is not that simple. The charger you will select has here a key role as the way you will set up parameters impacts your battery lifetime. Don't just plug it on any power supply nor use a charger ???



Charging a lithium-ion battery is not that simple. The charger you will select has here a key role as the way you will set up parameters impacts your battery lifetime. Don't just plug it on any power supply nor use a charger designed for another technology (Nickel-Cadmium or Lead), if you don't want to face safety issues.



Explore why lithium batteries may fail to charge, learn effective troubleshooting methods, discover how to revive a lithium-ion battery, and understand the charging process. Plus, find answers to commonly asked ???

LITHIUM BATTERY NOT FULLY CHARGING



Complete discharges can be detrimental to lithium-ion batteries. The Battery Management System (BMS) in devices prevents batteries from being discharged below a certain threshold to avoid damage. For example, when your phone ???



Welcome to our comprehensive guide on lithium battery maintenance. Whether you're a consumer electronics enthusiast, a power tool user, or an electric vehicle owner, understanding the best practices for charging, maintaining, and storing ???



Here's what I did: Using a variable power supply set to 9V with 1A current limit, briefly (1 sec) connect it to the battery (+ to + and - to -). The power supply may clamp, but that provided enough charge to reactivate the battery protection circuit. Then recharge it fully with a standard lithium ion battery charger. Worked a treat!

LITHIUM BATTERY NOT FULLY CHARGING



Charging a lithium battery pack may seem straightforward initially, but it's all in the details. Incorrect charging methods can lead to reduced battery capacity, degraded performance, and even safety hazards such as overheating or swelling. Running a lithium battery pack at extreme SoC levels ??? either fully charged or fully discharged



It's generally safe to leave your device charging overnight, but it's still a good practice to unplug it once fully charged. Storing at full charge: Storing your lithium-ion battery at full charge for extended periods can reduce its capacity. If you know you won't be using a device for a while, it's best to store it with a battery charge level



2. Mismatch between the charging device parameters and the battery's charging parameters, resulting in the battery being unable to charge fully. 3. Malfunction of the charging equipment, causing the battery to be unable to charge fully. 4. The battery has exceeded its lifecycle or has been used for an extended period, leading to capacity decay

LITHIUM BATTERY NOT FULLY CHARGING



Not Charging the Lithium Battery Long Enough. As we mentioned, not charging the lithium battery to its ideal condition is a common mistake owners make. Divide the amps/hour of the charger by the amps of the battery unit??a 100-amp/hour charger will fully charge a 50-amp battery in approximately two hours. Lithium-ion batteries have low



- Use a battery charger with lithium battery activation to charge the battery to 12.4V/24.8 V or above. Negative: Confirm that the battery is not in low-voltage protection. Proceed to the remaining steps. 2. Exclude the possibility of BMS low-temperature protection. Please check whether the ambient temperature of the battery is below 32°F.



In particular, never use a lead acid charger for charging a lithium battery. A lithium-ion battery, in general, has a low self-discharge rate. Therefore, it does not significantly discharge when left in storage. Fully charging lithium-ion batteries before storage is not required. Fully charged lithium-ion batteries can be dangerous when left

LITHIUM BATTERY NOT FULLY CHARGING



Yes, it is dangerous to attempt to charge a deeply discharged Lithium battery. Most Lithium charger ICs measure each cell's voltage when charging begins and if the voltage is below a minimum of 2.5V to 3.0V it attempts a charge at a very low current. First you say "no, [not] at all" ??? it's never safe to fully discharge



Having a problem with the battery not charging is a common issue for electric bike riders. Always unplug the charger once the battery is fully charged and avoid leaving it plugged in for extended periods of time. Adaluolo 36V Ebike Battery 10AH Water Bottle Electric Bike Battery Silver Removable Electric Lithium Bicycle Battery with



When you charge up a battery, you're simply shifting those lithium ions back the other way???out of the lithium cobalt oxide layer and back to the graphite. This is where we get to the problem

LITHIUM BATTERY NOT FULLY CHARGING



This is because constantly charging the lithium-ion battery to 100% and leaving it plugged in can damage the battery health. Sometimes letting your device charge fully is unavoidable. This prevents the battery from fully charging. It also stops the battery from entering a state of high-stress if it does remain plugged in after the battery



Why is Your EBL Battery Not Charging. 1.5V red lithium-ion 3000mAh AA batteries and 1200mAh AAA 1.5V rechargeable batteries can only be charged with a dedicated lithium-ion battery charger, but the batteries show as fully charged in the charger. These batteries can begin charging after going through the discharge process.



Temperatures inside a lithium-ion battery can rise in milliseconds. Once a thermal runaway event begins, it's often hard to stop. That's why charging your lithium-ion batteries in the proper environment is crucial to safety and longevity. Similar chemical reactions may occur if your lithium-ion battery gets wet.