



Up to 4% cash back? If you're stuck with a Lithium-ion battery that just won't juice up, there are some easy tricks to try. Let's figure out why your power's acting up and what you can do about it. This troubleshooting guide ???



Troubleshooting Steps for Lithium Battery Not Charging. 1. Check the charger and power source. Begin troubleshooting by ensuring that the charger is functioning properly. Test it with another compatible device or try a different charger to ???

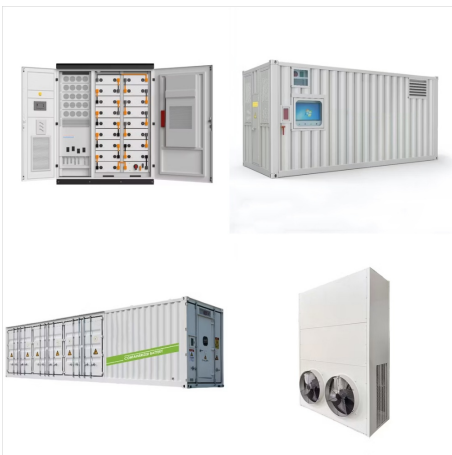


Luckily, the majority of issues with the Bauer 20V lithium battery not charging properly are not that hard to fix. All that you need to do is to keep track of the details listed here, and you will be sorted in no time. Troubleshooting Bauer 20V Lithium Battery Not Charging. If you're lucky, the issue will be more with the charger than the unit.

LITHIUM BATTERY NOT TAKING CHARGE



Why is Your EBL Battery Not Charging. These are the top reasons why your EBL battery is not charging. However, it would help if you remember that your NiMH is not charging correctly for various reasons. 1. A Bad Charger. Like any other rechargeable battery, they will only take in power if you charge EBL batteries with the proper battery charger



Troubleshooting RV Battery Problems: A Step by Step Guide. 1. Eliminate the possibility of BMS undervoltage protection. Measure the open-circuit voltage of the battery, and if it is lower than the values below, the battery is in a undervoltage protection state and refuses to ???



Lithium Iron Phosphate Battery 12 Volt 50 Ah View more 24V 25Ah Lithium Iron Phosphate Battery View more 24V 50Ah Lithium Iron Phosphate Battery View more. The guide also applies to legacy product models: RNG-BATT-LFP-12-100; RNG-BATT-LFP-12-170; Lithium-ion Battery Issues. Common problems of lithium-ion batteries are: Battery not holding charge

LITHIUM BATTERY NOT TAKING CHARGE



Disconnect the battery from loads, and charge the battery with a current greater than 1A as soon as possible. The battery cuts off the charging current due to overvoltage protection: The battery voltage exceeds the preset threshold during charging. 1. Disconnect the battery from the charging source. 2. Reduce charge voltage by 0.2V to 0.4V for



When your lithium-ion battery fails to show any signs of charging???no LEDs light up, and no power seems to be reaching the device???it can be quite baffling. This scenario often points to a battery that might be in a deep discharge state where the voltage has fallen below a safe level, making it unresponsive to standard charging methods.



Disconnect the battery from loads, and charge the battery with a current greater than 1A as soon as possible. The battery cuts off the charging current due to overvoltage protection: The battery voltage exceeds the preset ???

LITHIUM BATTERY NOT TAKING CHARGE



According to Battery University, lithium-ion batteries do not require a complete charge cycle, and partial discharges with frequent recharges are preferable. Full eruptions should be avoided because they put additional strain on the battery.



Most chargers pass a current through a battery until the battery reports a certain voltage has been achieved, but lithium-ion units are a good example of an exception to this rule ??? their voltage is fairly constant except when the battery is in a very low state of charge. As such a lithium-ion charger must monitor current and voltage and



Solution: Charge the bare lithium battery directly using the charger with over-voltage protection, but do not use universal charge. It could be quite dangerous. Root cause 2: Uneven current. Due to contact resistance or detection of charge, the current is inconsistent caused by the uneven charge of the cell. In the short-term storage (12 hours

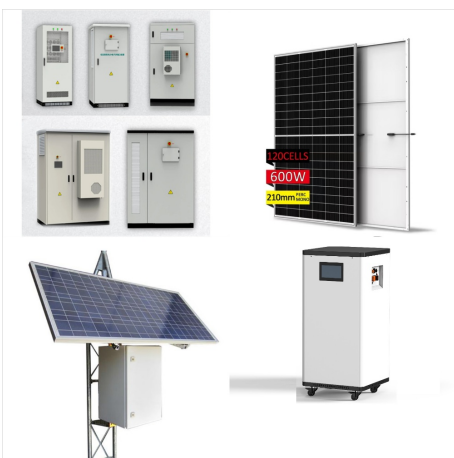
LITHIUM BATTERY NOT TAKING CHARGE



Why is Your EBL Battery Not Charging. These are the top reasons why your EBL battery is not charging. However, it would help if you remember that your NiMH is not charging correctly for various reasons. 1. A Bad ???



Welcome to our comprehensive guide on lithium battery maintenance. Whether you're a consumer electronics enthusiast, a power tool user, or an electric vehicle owner, understanding the best practices for charging, maintaining, and storing lithium batteries is crucial to maximizing their performance and prolonging their lifespan. At CompanyName, we have compiled a???



A Black & Decker 20V MAX Lithium-Ion Battery not charging can be a significant hurdle in your work. However, with the methods outlined in this article, you might be able to fix the issue yourself.

LITHIUM BATTERY NOT TAKING CHARGE



Charging a lithium battery pack may seem straightforward initially, but it's all in the details. Incorrect charging methods can lead to reduced battery capacity, degraded performance, and even safety hazards such as overheating or swelling. By employing the correct charging techniques for particular battery chemistry and type, users can



The battery shows 3.4v and will lit up a small LED (not a Cree or high output LED), but will not take input charge by the charger (charger light green like if it was not charging instead of orange) and when trying to boost it up using another 4.2v 14500 battery connecting + and - together, like mentioned above, it doesn't seem to work at all, i



If you have a charger for 18V Milwaukee lithium-ion batteries, that's the only type of battery you should attempt to charge with that charger. Milwaukee manufactures a separate charger for its 12V batteries. And, of course, batteries from other manufacturers won't fit on a Milwaukee charger.

LITHIUM BATTERY NOT TAKING CHARGE



For a new lithium battery not charging, it's crucial to ensure that it's properly inserted and the device's firmware is up to date. Sometimes, lithium batteries become too low to charge, necessitating a careful boost in voltage using a compatible charger. If your lithium battery is not charging to 100%, it might be experiencing calibration issues.



If your lithium battery is not picking up the charge, you can do a few things to revive your battery. If your lithium-ion battery has been sitting idle for a long time and now is not picking up the electric current, you can use a low-volt charger. For example, a 48V/20A charger for a 60V/20A battery is a good choice for an idle battery.



How to Charge Lithium-ion (or LiFePO4) Batteries?
There are several ways to charge Lithium batteries ??? using solar panels, a DC to DC charger connected to your vehicle's starting battery (alternator), with an inverter charger, or with a portable 12V battery charger or 24V battery charger. While charging LiFePO4 batteries with solar is perfect for sunny days, you ???

LITHIUM BATTERY NOT TAKING CHARGE



Discover 5 simple steps to troubleshoot a lithium battery not charging. From cable checks to charger verification, fix it hassle-free with these tips! Tel: +8618665816616; Whatsapp/Skype: +8618665816616; Email: sales@ufinebattery ; English English Korean . Blog. Blog Topics .



A lithium battery has the potential to stop charging. You should not be concerned if this occurs to you. To fix it, carefully follow the instructions elaborated in this article. The best way to fix it is using an overvoltage-protected charger, charge ???



Discover 5 simple steps to troubleshoot a lithium battery not charging. From cable checks to charger verification, fix it hassle-free with these tips! Tel: +8618665816616; Whatsapp/Skype: +8618665816616; Email: ???

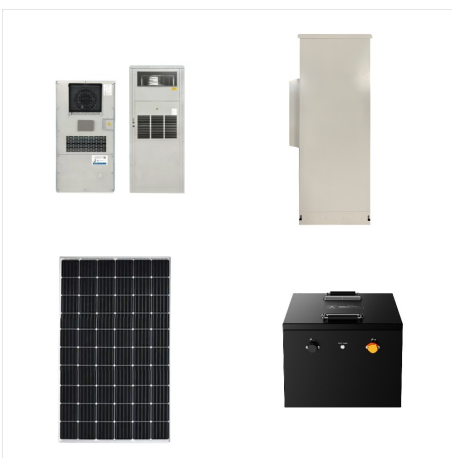
LITHIUM BATTERY NOT TAKING CHARGE



Monitor the Charging Process: Your battery will first enter the bulk phase, where most of the charging occurs, followed by the critical absorption phase to ensure a full charge. **Completion of Charge:** When your battery reaches full charge (typically around 14.6V for a 12V battery), the charger should automatically stop delivering current. If you



Another common problem with Ryobi batteries is that they may not hold a charge for very long. This can be caused by a variety of factors, such as overcharging the battery, exposing it to extreme temperatures, or storing it for too long without use.. To prevent this from happening, you should always remove the battery from the charger as soon as it is fully ???



12V 200Ah Lithium Iron Phosphate Battery w/ Bluetooth (SKU: RBT200LFP12-BT) Why Is My Battery Not Charging. Unfortunately, when your lithium battery refuses to charge, there could be a variety of reasons behind the problem. The issues might stem from a damaged battery or external factors unrelated to the lithium battery itself.

LITHIUM BATTERY NOT TAKING CHARGE



Check out our helpful post if you're having trouble with your DeWalt 20V MAX XR Lithium-Ion battery not charging. Final Thoughts. A Milwaukee M18 battery not charging can be a roadblock, but it



Explore why lithium batteries may fail to charge, learn effective troubleshooting methods, discover how to revive a lithium-ion battery, and understand the charging process. Plus, find answers to commonly asked ???



If your RV or camper battery isn't charging when it's plugged into shore power, there are some steps you can take to troubleshoot the issue before resorting to calling a costly professional. Table of Content
Part 1. Check the Wiring and Fuses Part 2. Evaluate Battery Condition for Corrosion Part 3. Inspect Circuit Breakers Part 4. Inspect the Battery Disconnect ???