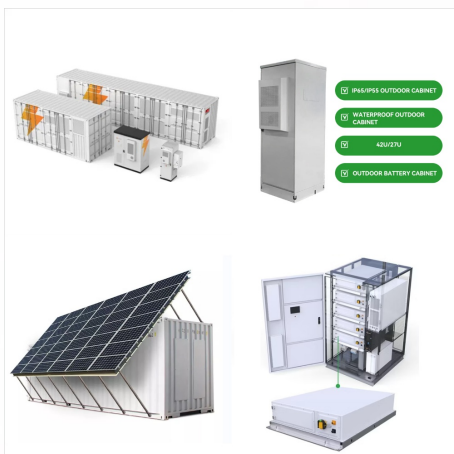


Fire authorities say blaze caused by battery cells exploding inside a warehouse. Save articles to read later and create your own reading list. A fire at a lithium battery plant in South Korea has killed at least 22 people and injured eight.



A fire at a lithium battery plant near South Korea's capital Seoul killed 22 people, most of them migrant workers from China. South Korea remains one of the countries with the highest industrial death rates in the world, the Financial Times wrote, with over 600 reported fatal incidents in 2023. Leading companies like Samsung and Hyundai

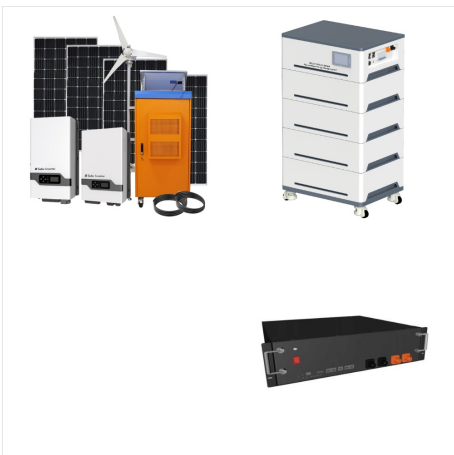


SEOUL, Jun. 25 (Korea Bizwire) ??? A devastating fire at a primary battery manufacturing plant in Hwaseong, South Korea, has once again brought the safety risks of lithium batteries into sharp focus. The blaze, which broke out at 10:31 a.m. on June 24 at the Aricell factory in Hwaseong's Seosin-myeon district, has claimed the lives of 22 workers, with eight others injured.

LITHIUM BATTERY PLANT SOUTH KOREA



HWASEONG, South Korea (Reuters) -A lithium battery factory in South Korea was set on fire after multiple batteries exploded on Monday, killing 22 workers, most of them Chinese nationals, fire officials said. Eighteen Chinese workers, two South Koreans and one Laotian were among the dead. The nationality of the other deceased worker was yet to be confirmed, Kim ???



Following a devastating fire at a lithium battery factory in South Korea that claimed the lives of 22 workers with one still missing, urgent safety inspections have been ordered at high-risk industrial sites. The blaze, which erupted in a warehouse containing 35,000 lithium batteries, resulted in toxic smoke, likely causing the workers to lose consciousness and perish within ???



The blaze broke out on Monday morning at the Aricell plant in Hwaseong city, about 45km (28 miles) south of the capital Seoul. Read more: Exploding batteries spark deadly S Korea factory fire 25

LITHIUM BATTERY PLANT SOUTH KOREA



A fire at a lithium battery plant near South Korea's capital Seoul killed 22 people, South Korea remains one of the countries with the highest industrial death rates in the world, the



Workers who fled the fire said it started when a single battery cell caught fire, triggering a series of explosions among some of the 35,000 lithium battery cells stored on the factory's second floor, according to Mr. Kim. Fires can occur in lithium batteries when the inside layers are compressed, causing a short circuit.



A fire at a manufacturing factory in South Korea, likely caused by exploding lithium batteries, resulted in the death of 22 workers, mostly Chinese migrants, and injured 8 others. The incident occurred during battery examination and packaging, with nationalities of the victims including Chinese, South Korean, and Laotian. Authorities are investigating the blaze, while ???

LITHIUM BATTERY PLANT SOUTH KOREA



A fire at a lithium battery factory in South Korea kills 22 mostly Chinese migrant workers. A fire at a lithium battery factory in South Korea kills 22 mostly Chinese migrant workers. 1 of 7 | A fire at a lithium battery manufacturing factory near South Korea's capital on Monday left at least 16 people dead, officials said.



In short: A fire broke out at a lithium battery manufacturing plant in South Korea on Monday, local time. At least 22 people have been killed and eight injured, most of them Chinese nationals.



South Korea's role in global battery production. South Korea is a leading producer of lithium batteries, which are crucial components in electric vehicles (EVs) and other high-tech applications

LITHIUM BATTERY PLANT SOUTH KOREA



A fire at a lithium battery plant in South Korea has killed at least 22 people and injured eight. South Korean authorities said on Monday that they had recovered 22 bodies from the factory in



South Korea is home to major producers of lithium-ion batteries that power electric vehicles (EVs) and to one of the world's biggest automakers, Hyundai Motor, and its affiliate Kia (000270.KS), opens new tab, which are making a push to ???



OverviewBackgroundExplosionsCasualtiesInvestigationResponse

LITHIUM BATTERY PLANT SOUTH KOREA



Item 1 of 5 View shows the site of a deadly fire at a lithium battery factory owned by South Korean battery maker Aricell, in Hwaseong, South Korea, June 24, 2024. REUTERS/Kim Hong-ji/File Photo



SEOUL - Aricell, a lithium battery plant that recently experienced a fatal fire resulting in 23 deaths, had not undergone any government industrial safety inspections in the past five years



The logo of South Korean battery maker Aricell is seen on the facade of its lithium battery factory following a deadly fire, in Hwaseong, South Korea, June 24, 2024. REUTERS/Kim Hong-ji By