

Do lithium batteries need a solar charge controller?

However, lithium batteries require specialized care during charging and discharging cycles. Failure to employ a compatible solar charge controller can result in rapid degradation of the battery's performance and may even pose safety risks.

Can I use a PWM controller with a lithium battery?

While it's technically possible to use a PWM controller with a lithium battery, it's not recommended due to the limitations of PWM controllers in managing the unique charging profiles of lithium batteries. What happens if my solar charge controller is undersized?

How does a lithium battery charge controller work?

The charge controller works with gel, sealed, and flooded lithium battery types, and has multiple load control modes, including manual, lighting, and light timer. Plus, the controller comes packed full of safety protections, including battery overvoltage, load overload, PV short circuit or reverse polarity, and more.

What types of batteries can a smart regulator charge?

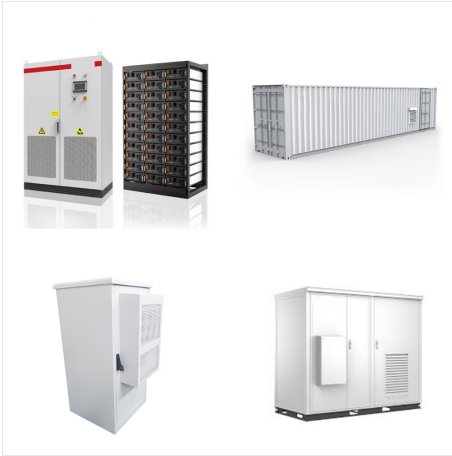
This smart regulator will optimally charge a range of battery types, including AGM, Gel, Calcium, Wet and all common lithium variants including LiFePO₄ and Li-ion. It contains a host of smart electronics including reverse polarity protection, short circuit protection, reverse current protection, overcharge protection and more.

Why do I need a battery regulator?

It ensures the power supplied by your portable solar panels is at the right battery voltage, and protects it from any risk of overcharging. Our regulators feature multi stage charging, including boost, absorption and float - so your battery is charged safely and ready to go when you need it.

How many volts does a solar panel charge a lithium battery?

A lithium battery likes to be charged at 14.4 Volts. A solar panel may have an output of 18 volts. The solar charge controller takes the 18 Volts and converts it to 14.4 Volts, providing the optimal charge for lithium batteries. This means less energy is lost in the transfer from solar panel to battery.



Renogy 60A 12V/24V/36V/48V DC Input MPPT Solar Charge Controller Auto Parameter Adjustable LCD Display Solar Panel Regulator fit for Gel Sealed Flooded and Lithium Battery, Rover 60A. Visit the Renogy Store. ???



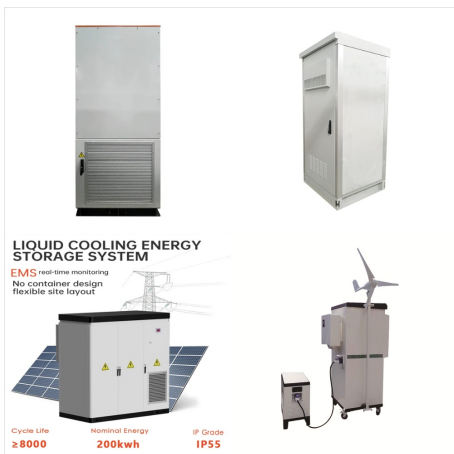
Safely charge your batteries with this 100 amp regulator using an alternator, wind, hydro and other 12V DC sources. Made for all battery types. LFP12V100AREG Voltage Input 9.4-14.4Vdc Output Operation Input Voltage: 9.4-14.4Vdc Output On Input Voltage < :9.2Vdc Input Voltage > :14.6Vdc Output Off Over Current Shutdown: Current > than 100A/200A



As I understand it, float charging is not good for lithium batteries. The Renogy datasheet reveals: "Standard Charge shall consist of charging at 0.2C constant current rate until the battery reaches 14.6V. The battery shall then be charged at a constant voltage of 14.6V while tapering the charge current. "



Charging lithium batteries with an alternator requires a basic understanding of the charging process. Lithium batteries have a high energy density and are rechargeable, making them ideal for use in many applications. However, charging lithium batteries requires a specific charging profile to ensure optimal performance and lifespan.



LNEX Solar Charge Controller Waterproof, 20A Super Thin Solar Panel Battery Intelligent Regulator with LCD Display 12V/24V PWM Solar Controller for LiFePO4,AGM, Gel, Flooded and Lithium Battery Litime LiTime 20Amp PWM 12V/24V Solar Charge Controller with LCD Display for LiFePO4 Lithium Battery,AGM, Gel, FLD



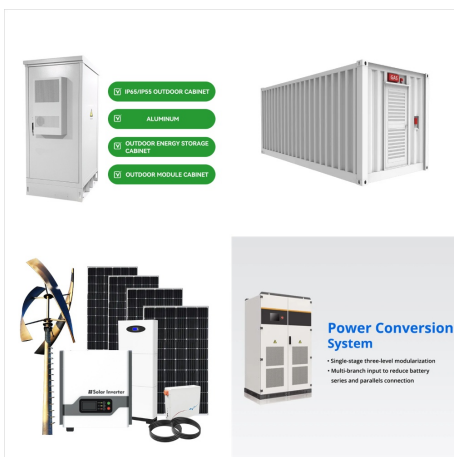
Lithium Batteries . Alpha150. Lithium Deep Cycle Batteries. Shop All Lithium Batteries. LEARN MORE. Solar Panels . Fixed Solar Panels. these regulators ensure the correct charge is supplied safely and efficiently to charge your auxiliary batteries. Our regulators can be suitable for charging up to two separate battery banks, and come in 10



Amazon : MPPT Solar Charge Controller 80 amp, 12v 24v 36v 48v auto Battery Regulator MAX PV Input 150V, Solar Charger Support Sealed, Gel, Flooded, and Lithium Batteries : Patio, Lawn & Garden 99% Charging Efficiency Solar Regulator for ???



I recently bought a new lithium battery and know I have to get an upgraded Regulator before the lithium battery (NOW i know, after killing my other brand new lithium lol). I searched the forum and found threads about regulators and examples of ones to buy, but I still dont understand what exactly to look for in a regulator to make sure it will



When the battery is located a moderate distance away from the charge controller, a temperature sensor is highly recommended. Rover Model (MPPT Charge Controller) The Rover was designed for the most efficient and ???



Battery powered projects (particularly those with periodic events spaced quite a bit apart) usually benefit from using a linear regulator.. Looking at your requirements (LiPo 4.2V to V_o + dropout voltage) a linear regulator will be (on average 3.7V battery, regulated output 3.0V) 81% efficient which is close to the SMPS solution anyway.



Yamaha Street Bike Rectifier-Regulator Lithium Compatible Ricks's Motorsport Electrics . STATUS; TRACKING; ACCOUNT; Toll Free: 1-800-521-0277 or +1-603-329 for use with standard lead acid batteries. The voltage set point is 14V +/- .2. Please contact the manufacturer of your Lithium Ion Battery to ensure our product has the correct set



The charge controller in your solar installation sits between the energy source (solar panels) and storage (batteries). Charge controllers prevent your batteries from being overcharged by limiting the amount and rate of charge to your batteries.



The charge controller works with gel, sealed, and flooded lithium battery types, and has multiple load control modes, including manual, lighting, and light timer. Plus, the controller comes packed full of safety protections, including battery overvoltage, load overload, PV short circuit or reverse polarity, and more.



OAE 60A MPPT Solar Charge Controller 12V 24V 36V 48V Auto Battery Regulator, Solar Panel Max 150V Input for Lithium, Sealed, Gel, and Flooded Batteries (Yellow) OAE 40A Solar Panel Charge Controller MPPT, Solar Battery Regulator 12v 24v 36v 48v auto max 150v PV Input, fit for Sealed Gel AGM Flooded Lithium Battery???



Simply connect the regulator to the battery and it will deliver special small-current pulses until the battery has recovered enough to be charged normally. Key features. Fully compatible with AGM, Gel, Calcium, Wet and all types of lithium batteries (LiFePO4, Li-ion, Li4Ti5O12) 6-stage charge program is capable of charging batteries from under 5V



Designed specifically for charging lithium batteries / LiFePO4 batteries; Includes MPPT and PWM models for optimal charging; Wide range of models available, suitable for various solar panel sizes and lithium battery banks; Available for different battery voltages, including 12V lithium batteries and even 24V, 36V and 48 Volt. Advanced



12V/24V 30A MPPT Solar Charge Controller with LCD display for lead acid and Lithium batteries. CAT.NO: MP3768. \$299.00. Add to cart. Add to list. Add to list. Available for delivery. Solar Regulator RS485 to USB PC Connection Lead details. EPEVER. Solar Regulator RS485 to USB PC Connection Lead. CAT.NO: MP3747. \$19.95. Add to cart. Add to list.



Marysville, Washington ??? Balmar LLC, the leading manufacturer of onboard DC charging systems for cruising sail and power boats today announced enhanced support for the charging of lithium batteries. Balmar's MC-614, MC-624 and MC-612-DUAL smart regulators have all been equipped with an additional standard program specifically designed for LiFePO4 ???



Simply select the battery program that matches your battery technology. The Max Charge regulator family contains 8 preset charge profiles. The ARS-5 contains 5 preset profiles. Standard Flooded, Voltage Halogen Systems, Lithium (LiFePO4), Carbon Foam AGM: Yes: Partial: Partial: Partial: Yes: Balmar Alternator Models: 6-Series Alternators



Background I wish to power my circuit with a Lithium-ion or LiPo battery (likely a battery with around 1000 mAh capacity). These batteries have a voltage that goes from 4.2V to 2.7V typically during Options of regulator parts that are suitable (inexpensive and with low dropout voltage of under 200mV at around 400-500 mA current) include the



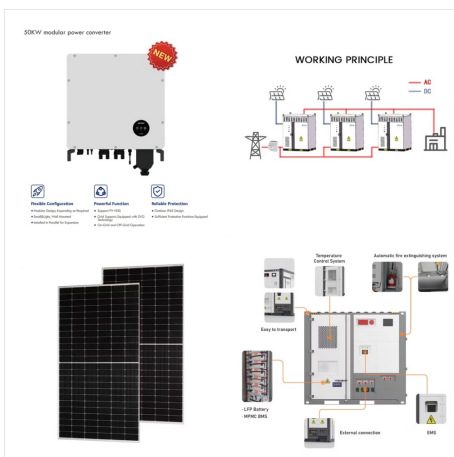
A 12V/24V/36V/48V DC Input MPPT Solar Charge Controller Auto Parameter Adjustable LCD Display Solar Panel Regulator fit for Gel Sealed Flooded and Lithium Battery, Rover 100A, Black 4.0 out of 5 stars 125



The charge controller in your solar installation sits between the energy source (solar panels) and storage (batteries). Charge controllers prevent your batteries from being overcharged by limiting the amount and rate of ???



LNEX Solar Charge Controller Waterproof, 20A Super Thin Solar Panel Battery Intelligent Regulator with LCD Display 12V/24V PWM Solar Controller for LiFePO4,AGM, Gel, Flooded and Lithium Battery
4.6 out of 5 stars 74



LNEX Solar Charge Controller Waterproof, 20A Super Thin Solar Panel Battery Intelligent Regulator with LCD Display 12V/24V PWM Solar Controller for LiFePO4,AGM, Gel, Flooded and Lithium Battery
4.6 out of 5 stars 74



Think of the efficiency gains in terms of voltage. A lithium battery likes to be charged at 14.4 Volts. A solar panel may have an output of 18 volts. The solar charge controller takes the 18 Volts and converts it to 14.4 Volts, providing the optimal charge for lithium batteries. This means less energy is lost in the transfer from solar panel to



This high-quality waterproof 30A in line smart solar regulator will charge a range of batteries including all common types of Lithium. It contains a host of smart electronics and a large backlit LCD screen, and is designed to work perfectly with all Hardkorr 12v portable solar panels. You can even hook two 150w or 200w panels up together using this regulator and our 1-into-2 ???



All Documented. Wakespeed has all of this documented on their support tab on the WS500 product page for batteries they support, both lithium and lead acid, although do note that there are even more configurations supported by the app I wrote about above.. For Super-Geeks, Too. And those of you who have the inclination and skills can still use their detailed documentation to ???



Harnessing solar energy for powering your devices or off-grid systems is a sustainable and eco-friendly choice. To ensure the efficient and safe charging of lithium ion batteries using solar power, it's crucial to set up the solar charge controller correctly. In this guide, we'll walk you through the process, covering the essential settings for bulk, absorb, equalize, ???



Your motorcycle probably came from the factory with a normal lead or gel battery (check your manual). That said, a lithium battery is super nice to have since it is small, strong and lightweight! However, if your regulator and rectifier are outdated, they can overload the lithium battery which can lead to overheating or even an explosion.