



Does FedEx offer a lithium battery shipping on-line course?

FedEx Ground offers an economical lithium battery shipping on-line course to help you meet this requirement for ground shipping. Please contact the Dangerous Goods hotline at 800-GOFEDEX, Option 81 for more information on this course.

Are batteries safe in FedEx Express?

When improperly handled, packaged, or stored, batteries pose a risk for corrosive chemical and electrical fires. Emphasis must be placed on safety when packaging and transporting them. The following is an overview of the requirements for acceptance and transport of batteries within the FedEx Express system.

Does FedEx accept regulated battery shipments?

FedEx Office®; Print and Ship Center locations do not accept regulated battery shipments, with the exception of lithium battery shipments meeting Section II IATA regulations. How to Pack guidelines. Refer to the FedEx Logistics lithium battery shipping guide for specific guidelines regarding international air and ocean requirements.

Do I need a specific lithium battery Shipping Class?

FedEx Ground strongly recommends that anyone shipping lithium batteries take a specific lithium battery shipping class in order to better understand these complex regulations and meet DOT/ICAO/IATA/IMDG/USPS requirements.

Do I need a lithium battery safety test?

A lithium battery safety testing information should be requested before any battery is shipped. Regulations differ when shipping by air (this includes FedEx Ground shipments to Alaska and Hawaii), water or USPS/SmartPost service.

Are lithium batteries safe?

When shipping or importing lithium batteries, including those contained in or packed with devices and equipment, packaging requirements must be met and package contents must be declared to transportation companies and the U.S. Postal Service/SmartPost. While most lithium batteries are safe, some have

# LITHIUM BATTERY SAFETY DOCUMENT FEDEX



overheated and caught fire.



LITHIUM ION BATTERIES Lithium Ion Lithium Ion Batteries packed with equipment UN3481, P.I. 966 Lithium Ion Batteries contained in equipment UN3481, P.I. 967 Section II Acceptable to most locations. Cells equal to or less than 20Wh; and Batteries equal to or less than 100Wh installed in equipment (including circuit boards) or ??? No Shipper's



Lithium Ion Battery Safety Document, Lithium Ion Battery Handling Label, Class 9 Lithium Battery Label Shipper: UPS, FedEx, USPS, etc. Weight: Lithium batteries weighing more than 35kg must be approved by the national authority before shipment: Defective or damaged: Defective or damaged lithium batteries must not be transported: Short



??? The following statement is required on the waybill: "Lithium Metal Batteries in compliance with Section II of PI 970" UN 3091, Lithium Metal Batteries Contained in Equipment ??? PI 970 Section II. Packaging. Shipping instructions: Contained in equipment. BACK HOME > 4 Cells or > 2 batteries. UN 3091. For more information, call. Lithium

# LITHIUM BATTERY SAFETY DOCUMENT FEDEX



Lithium batteries are found in everything from phones and laptops to watches, cameras and toys. For shipping, all types of lithium batteries are classified as dangerous goods ??? with special regulations for packing, labelling, documentation and handling.



Lithium batteries are found in everything from phones and laptops to watches, cameras and toys. For shipping, all types of lithium batteries are classified as dangerous goods ??? with special regulations for packing, labelling, documentation and handling.



Lithium batteries are classified as dangerous goods. Please refer to the product Safety Data Sheet (SDS) or product specifications to determine the classification of the battery type. 8. Can I ship recalled, damaged or non-conforming cells or batteries? Lithium batteries, identified by the manufacturer as being defective for safety reasons, or that

# LITHIUM BATTERY SAFETY DOCUMENT FEDEX



Printed or other static representations of this document are considered uncontrolled and Page 1 of 4 for reference-only. FORBIDDEN IN PASSENGER AIRCRAFT 6 CARGO AIRCRAFT ONLY Figure 2 9\_ Figure 3 IF DAMAGED Lithium Battery Mark Lithium Battery Label FedEx Express does not provide these DG Labels. Customers may order these



The package must also not require the lithium battery mark or lithium battery handling label and ELB (FedEx Express DG handling January 2018 Printed or other static representations of this document are considered uncontrolled and Page 1 of 6 for reference-only. Effective January 2018 \* January 2018 Printed or other static representations



%PDF-1.6 %???? 8386 0 obj >stream h??VmO?0  
?+? ???v?8???4UJ[Z??(??AE?iU?x(C)W"??J ???  
?;> ??????iu. 3/4 ??? ?F^? #" ?D?? 8 G8 ????  
I????! "Xrd"?y? " ?ah????????Y{ 8? 1/2  
????!???/Q ??? |?L??Z??Uv??<<?r?Og M? c?-Q+  
0 z-K o??OAE? ?q??ae???{ 1/2 ?C}???gz:?,J ?AEt  
?IJ~(C)? ?, =<<?u\*? !? ?????-ae?bB8M  
b?[M????jn??? (R)???{3N 2??f??U ?



# LITHIUM BATTERY SAFETY

## DOCUMENT FEDEX



??? 2 grams of lithium metal per battery Cells or batteries only (Lithium ion batteries in compliance with Section II of PI 965) ??? < 8 cells or < 2 batteries in a package, without electronic equipment. (Note: For cells or batteries of < 2.7 Wh, the number of cells/batteries in the package must be limited to 2.5 kg net weight. Cells or



4 ??? Lithium metal (LiM) ??? are generally non-rechargeable (primary, one-time use). ??? have a longer life than standard alkaline batteries ??? are commonly used in hearing aids, wristwatches, smoke detectors, cameras, key fobs, children's toys, etc. LITHIUM BATTERY TYPES There are many different chemistries of lithium cells and batteries, but for transportation purposes, all lithium ???



Shipping lithium batteries can be complicated, but FedEx provides all the information you need to ship batteries safely to and from Hong Kong SAR, China. Prepare Documents The contents of these materials are subject to change due to constant changes in government regulations. FedEx Express accepts no liability for loss or damage

# LITHIUM BATTERY SAFETY DOCUMENT FEDEX



FedEx Approval Letter attached to package and conditions are compliant. [FedEx Approval Letter] Y  
N SECTION IB LITHIUM ION OR METAL BATTERIES N/A 36. "IB" or "1B" either after Packing Instruction or in Authorization. [8.1.6.9.3 Step 8] Y N 37. Lithium Battery Mark (Figure 7.1.C) is used. UN number required on the mark. [7.1.5.5]



LITHIUM BATTERIES 2021 DG Checklist UN 3090 LITHIUM METAL BATTERIES N/A 34. : Shipper on FedEx Express UN 3090 Section IA/IB preapproval list. [FX-05 (b)] Y N. Printed or other static representations of this document are considered uncontrolled and for reference only.



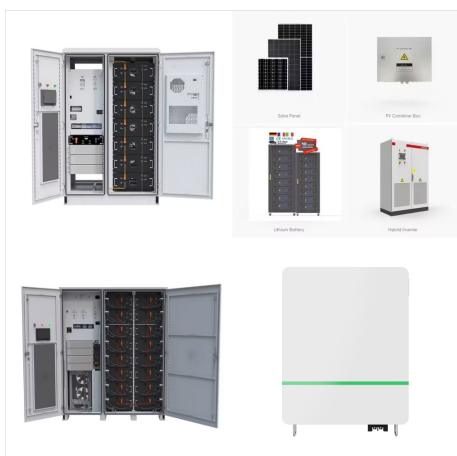
For international shipments, a Lithium Battery Safety Document must be completed and attached. This document provides details about: Type of Batteries: Whether they are lithium-ion or lithium metal. other carriers such as FedEx or DHL also have established guidelines for safely transporting lithium batteries. Each carrier has its own set of

# LITHIUM BATTERY SAFETY

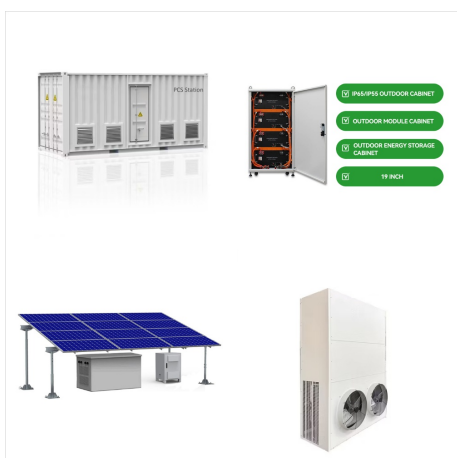
## DOCUMENT FEDEX



LITHIUM BATTERIES 2022 DG Checklist FedEx  
branded packaging (including brown boxes) not  
used. [FX-06] Y N 23. Shipper and Consignee name  
and full address marked Printed or other static  
representations of this document are considered  
uncontrolled and for reference only.



2 grams of lithium metal per battery Cells or  
batteries only (Lithium ion batteries in compliance  
with Section II of PI 965): < 8 cells or < 2 batteries in  
a package, without electronic equipment. (Note: For  
cells or batteries of < 2.7 Wh, the number of  
cells/batteries in the package must be limited to 2.5  
kg net weight.) Cells or batteries



When the Lithium Battery Mark (IATA Figure 7.1.C)  
is required and used for Section IB and permitted  
Section II lithium battery shipments, the UN  
number(s) must be added to the mark. The UN  
number indicated on the mark should be at least 12  
mm high. Note: The Lithium Battery Mark cannot be  
folded or wrapped around multiple sides of the  
package.

# LITHIUM BATTERY SAFETY DOCUMENT FEDEX



Shipping lithium batteries can be complicated, but FedEx provides all the information you need to ship batteries safely to and from Australia. Prepare Documents The contents of these materials are subject to change due to constant changes in government regulations. FedEx Express accepts no liability for loss or damage resulting from



Shipping lithium batteries through UPS requires adherence to stringent safety guidelines to mitigate risks associated with their flammability and potential hazards. Understanding and following these guidelines is crucial for ensuring the safe and compliant transport of lithium batteries. This comprehensive guide outlines the essential UPS guidelines ???



UN 3090 LITHIUM METAL BATTERIES N/A 32.  
Section IA/IB: Shipper on FedEx Express UN 3090  
Section IA/IB preapproval list. [FX-05 (b)] Y N  
SECTION IB LITHIUM ION OR METAL  
BATTERIES N/A 33. "IB" either after Packing  
Instruction or in Authorization. [8.1.6.9.3 Step 8] Y N  
34. Lithium Battery Mark (Figure 7.1.C) is used. UN  
number



# LITHIUM BATTERY SAFETY DOCUMENT FEDEX



containing both lithium ion cells and lithium metal cells must be shipped as UN 3090 or UN 3091, as appropriate. Note 1 - A small "hybrid" battery may not contain more than 1.5 g of lithium metal contained within all



Lithium Batteries Regulations: Battery Types. Step 1  
??? What type of battery are you shipping? Tip:  
Click the below buttons to get more details on each type of batteries. Lithium ion batteries or cells . are rechargeable (secondary) lithium ion or lithium polymer cells or batteries. These are very commonly found in portable consumer



Lithium batteries are found in everything from phones and laptops to watches, cameras and toys. For shipping, all types of lithium batteries are classified as dangerous goods ??? with special regulations for packing, labelling, documentation and handling.

# LITHIUM BATTERY SAFETY DOCUMENT FEDEX



4 ??? Lithium metal (LiM) ??? are generally non-rechargeable (primary, one-time use). ??? have a longer life than standard alkaline batteries ??? are commonly used in hearing aids, wristwatches, smoke detectors, cameras, key fobs, children's toys, etc. LITHIUM BATTERY TYPES There are many different chemistries of lithium cells and batteries, but for transportation purposes, all lithium ???



20Wh; and batteries equal to or less than 100Wh ??? Completed IATA Lithium Battery Label (See Figure 2) ??? Alternate Documentation needed. Limit per package: PAX = 5kg CAO = 5kg Lithium Ion Batteries UN3480, P.I. 965 Section IB Acceptable to dangerous goods locations only. Cells equal to or less than 20Wh; and batteries equal to or less than 100Wh