

Why should you buy a lithium battery for a mobility scooter?

With lithium technology, you'll charge your batteries faster, achieve longer battery life, and experience greater reliability from one of Pride's most popular mobility scooter lineups. Lithium batteries, the same technology used to power your smartphone and electric vehicles, pack more power into smaller, lighter units.

What kind of battery does a mobility scooter use?

It's worth noting that most mobility scooters come with GEL batteries that are still considered sealed lead-acid. Others often come with AGM-style SLA batteries, but again, all of those are considered SLA and cannot compare with the performance of a Lithium Chemistry battery.

Are cheap lithium-ion batteries safe for electric scooters & ebikes?

In 2023, reports of fatal fires caused by cheap or reconditioned lithium-ion batteries--the kind of batteries used in electric scooters and ebikes--have filled the news. We recommend only batteries and motors that are UL-certified to the standards required by New York City.

Which battery is best for electric scooters?

Lithium-Ion Batteries: These batteries offer a higher energy density and a longer lifespan. Their lightweight nature and high efficiency make them ideal for electric scooters. Lithium-ion batteries generally provide better performance, with higher capacity and voltage options. Lithium-ion batteries stand out due to their superior performance:

Should I buy a SLA battery for my mobility scooter?

The only reason why you would want to stick with a traditional SLA battery is due to cost. SLA batteries are heavy, they discharge faster, and only last about 2 years in states that are humid and hot. It's worth noting that most mobility scooters come with GEL batteries that are still considered sealed lead-acid.

Are sealed-lead-acid batteries the future for mobility scooters?

In simple terms, Lithium batteries are the future, and sealed-lead-acid batteries are soon to be antiquated for mobility scooters. We'll get into the more specific details and explain why. Please note that not all lithium batteries are TSA-compliant.



Lithium Batteries. Folding electric wheelchairs and mobility scooters that fold up, usually work with lithium batteries. When traveling on an airplane, you need to check with the airline regarding the restrictions for traveling with Lithium batteries. Per the FAA any lithium battery for mobility purposes larger than 300 Watt-Hours is not in



Again, the electric scooter with the longest battery life is the Dualtron Storm Limited. Not only does it deliver a 136-mile maximum range, but its battery is made up of high-quality 21700 LG cells that promise up to 500 charge cycles without deterioration. Can You Use an Electric Scooter Without a Battery?



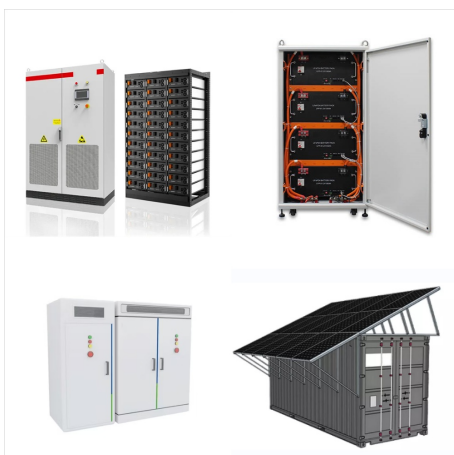
Ultimately, watt-hours is the key metric used for comparing battery performance. Lithium-Ion batteries are the most common type of power supply used in electric scooters. They are a relatively recent development but have become more popular than other battery types such as those that are lead-acid.



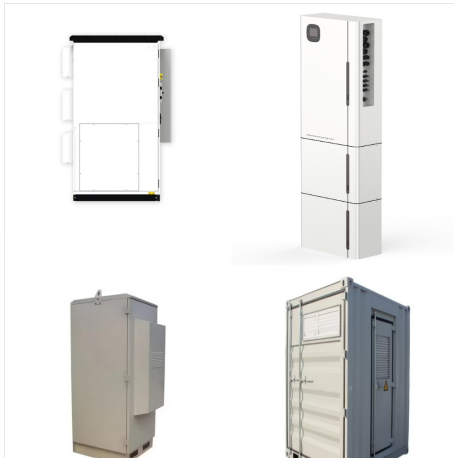
This lithium ion battery for electric scooter retains its charge and has a longer shelf life than other batteries, which tend to degrade quickly. The PVC covering on the outside of the battery protects it from being damaged by rain. It works flawlessly till 1000 cycles, then reduces the capacity by about 20%, which is excellent.



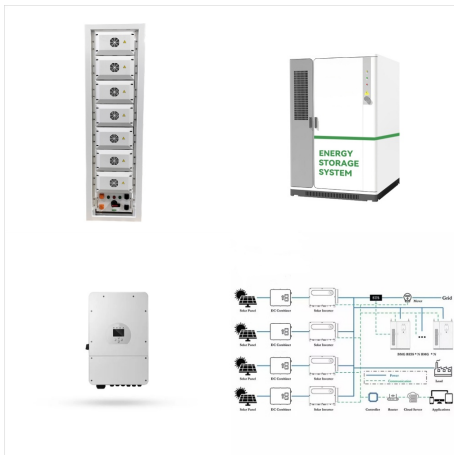
The iRIDE 2 is equipped with a lithium-ion battery pack which is airline compliant* for safe travel! This portable lightweight travel solution weighs in at only 46.5 lbs., including batteries. This portable 3-wheel scooter features a new easy-to-read a?]



5 year Living Well Storesi,? warranty includes batteries. Battery performance defines the Go-Go Endurance Li Mobility Scooter. With lithium technology, you'll charge your batteries faster, achieve longer battery life, and experience greater reliability from one of Pride's most popular mobility scooter lineups.



If you own a mobility scooter or a power wheelchair, chances are it has standard sealed-lead acid (SLA) batteries. For years, mobility manufacturers have relied on SLA batteries to power their devices. However, with extensive research and technological developments, lithium battery upgrades have been introduced for mobility scooters.



Lithium-ion batteries in electric scooters typically last for 300-500 charge/discharge cycles before beginning to lose capacity. Depending on usage, this equates to 3,000-10,000 miles on an average scooter model. As the battery capacity diminishes, it is common to lose 10-20% initially, with further declines over time.



Amazon : Soumye 48V 624WH Lithium-ion Battery 750W Peak Power Folding Electric Bike 10" Fat Tire eBike Electric Scooters for Adults (S162-Black) : Sports & Outdoors. "Fantastic scooter. Battery lasts for days. Goes up hills a?|



Electric scooter batteries a?? what you need to know. Electric scooters run on electric batteries, mainly Lithium-Ion ones, with voltages ranging from 24 V to 120 V. These batteries usually have between 150 Wh and 750 Wh of energy and take about 8 hours for a full charge, lasting an average of 2 to 3 years.



Lithium Mobility Scooters are powered by advanced lithium-ion batteries making them the lightest and most reliable travel scooters in the UK. Ideal for air travel. The store will not work correctly when cookies are disabled. Join the CareCo email list. And be the first to hear about new products, restocks, upcoming sales and discount codes.



ECO-WORTHY 12V 20Ah Lithium Battery, 3000+ Deep Cycle Rechargeable LiFePO4 Lithium Ion Phosphate Battery with BMS for Trolling Motor, Fish finder, Kids Scooters, Power Wheels, Outdoor Camping ECO-WORTHY 12V 30Ah Mini Lithium Battery with 4A LiFePO4 Battery Charger, for Trolling Motor, Power Wheels, Mobility Scooter, Boat, a?|



Mobility Scooter Batteries. Mobility Scooter Batteries. All Categories. Automotive & Powersports; Batteries by Voltage; Battery Chargers; Chargers; Clothing; 12V 46Ah Dakota Lithium U1 LiFePO4 Battery \$ 499 \$ 399. Be The First to Know. Get access to exclusive deals, hear about new products before anyone else, and enjoy tips, tricks, and DIY



Last week's blaze joined the more than 200 fires in New York City last year caused by batteries from e-bikes, electric scooters and similar devices. Lithium-ion battery explosions are now the



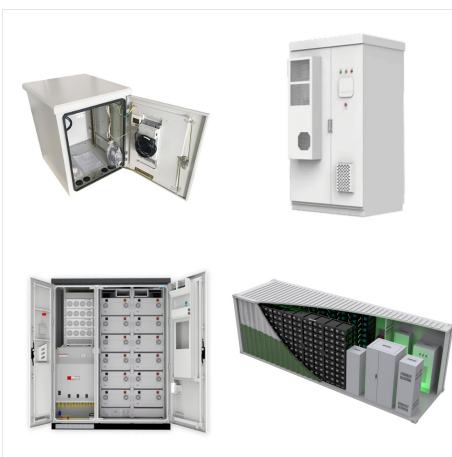
WEIZE 12V 35AH Deep Cycle Battery for Scooter Pride Mobility Jazzy Select Electric Wheelchair, Set of 2. 4.5 out of 5 stars. 3,159. 700+ bought in past month. DC HOUSE 2 Pack 12V 30Ah LiFePO4 Lithium Battery, 4000+ Deep Cycle Rechargeable Battery, Perfect for Scooter Pride Mobility Jazzy Select Electric Wheelchair, Trolling Motor. \$159.99



More than 90% of e scooters use lithium ion batteries as they offer the highest ratio of energy density per kg of battery. Lead acid batteries were more commonly found in earlier electric scooters (before lithium ion became cheaper and more reliable) - however - lead acid is heavier and is far more prone to premature failure i.e. over discharging.



The battery is your electric scooter's "fuel tank." It stores the energy that is consumed by the DC motor, lights, controller, and other accessories. Most electric scooters will have some type of lithium ion-based battery pack due to their a?|



Lithium-ion battery fires from electric cars, bikes and scooters rise, challenging firefighters 06:06. The rechargeable batteries that power common items like e-bikes, scooters and electric cars



Buy SuperHandy Passport Mobility Scooter for Adults- Foldable, 3 Wheel, Airline Travel Friendly - 13 Mile Range, Includes 2 Removable 48V Lithium-ion Batteries & Charger (275 Lbs) on Amazon FREE SHIPPING on qualified orders



Best 15Ah Lithium Battery for Mobility Scooter. No 15Ah Lithium ion batteries on the market in the UK met our standards. So if you want a Lithium battery and you know a 15Ah battery will fit your scooter, then you can get one of the 12Ah mobility scooter batteries we recommended above.



This model, in particular, is highly recommended because it is an excellent combination of an outdoor mobility scooter, and a indoor mobility scooter which runs in Lithium battery and has CTS suspension. The Lithium battery has a 3-year warranty and is so lightweight, it makes the old-school sealed lead acid batteries seem overly heavy.



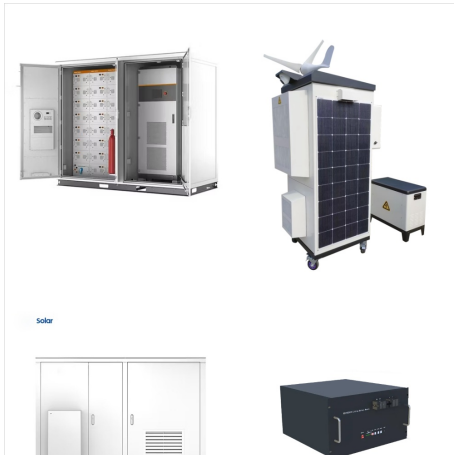
Electric scooters primarily use two types of batteries: lithium-ion (Li-ion) and lithium-polymer (LiPo) batteries. Li-ion batteries are the most common, known for their reliability and energy density. Electric scooter batteries are generally safe when used and maintained correctly. However, like any battery-powered device, there is a



The top speed of 59 mph / 95 kmh, and the 6640 Watt hub BLDC motors, clearly set the Dualtron Storm apart from the other scooters with removable batteries. The scooter weighs 102 lbs / 46.2 kg, which is not even that heavy considering the scooter's insane performance (other power scooters easily weigh 30 lbs / 14 kg more while having weaker



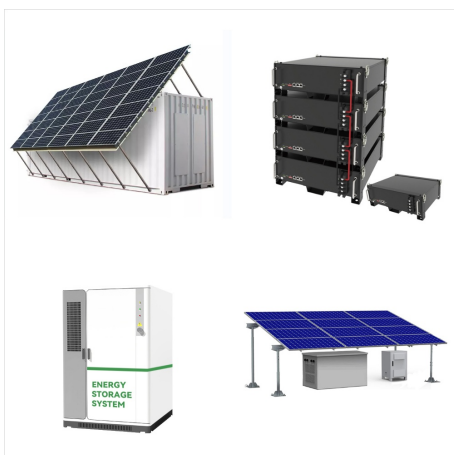
Mobility scooters empower individuals with limited mobility, providing them with essential independence. However, the type and performance of the battery significantly impact how effectively they serve users. The two primary types of batteries for mobility scooters are Sealed Lead Acid (SLA) and Lithium, each with distinct lifespans and benefits that can greatly a?|



Safety isn't just a matter of how you ride a scooter??it's also how you treat the scooter's battery. In 2023, reports of fatal fires caused by cheap or reconditioned lithium-ion batteries



Amazon : Soumye 48V 624WH Lithium-ion Battery
750W Peak Power Folding Electric Bike 10" Fat Tire
eBike Electric Scooters for Adults (S162-Black) :
Sports & Outdoors. "Fantastic scooter. Battery lasts
for days. Goes up hills and drives on grass with
ease." Read more "



TopMate ES35 Powered Mobility Scooter 3 Wheels
Foldable Trike with Seat for Adults, Lightweight
Electric Scooter with Removable 36V 7.8AH
Battery, Reverse Function & Key Switch for
Commute and Travel Detachable Lithium Battery,
Long Range 20 Miles, Max Load 300lbs, 3+1 Speed
(Black) Buying options. Try again! Details . Added to
Cart. spCSRf



Best 15Ah Lithium Battery for Mobility Scooter. No 15Ah Lithium ion batteries on the market in the UK met our standards. So if you want a Lithium battery and you know a 15Ah battery will fit your scooter, then you can get one of the 12Ah a?]



Although lithium-ion batteries may have a higher upfront cost, they can provide significant benefits in terms of performance and longevity. Part 3.

Maintenance tips for mobility scooter batteries. To prolong the lifespan and optimize the performance of your mobility scooter batteries, follow these maintenance tips: 1. Regular Charging