

Why is my lithium battery not charging?

If a lithium battery has experienced serious damage, the internal BMS won't allow the battery to do anything. It won't accept a charge or provide any power. This is a safety mechanism that keeps you, your vehicle, and your family safe from anything that might not be wired right in your rig. That could be why your lithium battery isn't charging.

What should I do if my lithium battery is not charging?

Check the voltage and amperage requirements of your battery and compare them with your charger's output. Using a charger with too high voltage can damage the battery, while too low won't charge it effectively. Recalibrating your lithium battery can help if it's not charging to its full capacity.

Can a high voltage Charger damage a lithium battery?

Using a charger with too high voltage can damage the battery, while too low won't charge it effectively. Recalibrating your lithium battery can help if it's not charging to its full capacity. Start by draining the battery completely, then charge it uninterrupted to 100%.

Why does a lithium battery keep going bad?

Over time, all batteries undergo degradation due to repeated charge and discharge cycles. As a lithium battery ages, its capacity and ability to hold a charge diminish. This natural wear and tear can eventually lead to charging issues. Steps to Check and Resolve:

What happens if a lithium battery gets too hot?

Lithium batteries are sensitive to high temperatures, which can affect the charging process. If the battery or charger becomes too hot during charging, it may prevent the battery from charging effectively. To avoid overheating, make sure to charge your lithium battery in a well-ventilated area and keep it away from direct sunlight or heat sources.

How do I know if my lithium battery is not charging?

One important and easy thing to check when your lithium battery isn't charging is your connections. Simply wiggle the wires and look for any loose connections that need tightening. This includes the connections to the

LITHIUM BATTERY WILL NOT CHARGE



battery and any other connections in your electrical system.



Lithium Iron Phosphate Battery 12 Volt 50 Ah View more 24V 25Ah Lithium Iron Phosphate Battery View more 24V 50Ah Lithium Iron Phosphate Battery View more. The guide also applies to legacy product models: RNG-BATT-LFP-12-100; RNG-BATT-LFP-12-170; Lithium-ion Battery Issues. Common problems of lithium-ion batteries are: Battery not holding charge



A lithium battery has the potential to stop charging. You should not be concerned if this occurs to you. To fix it, carefully follow the instructions elaborated in this article. The best way to fix it is using an overvoltage-protected charger, charge your bare lithium battery directly; do not charge it using a universal charger.



Encounter the issue of your electric bike battery not charging? Dive into our informative guide to diagnose and resolve this problem effectively. Adaluolo 36V Ebike Battery 10AH Water Bottle Electric Bike Battery Silver Removable Electric Lithium Bicycle Battery with Charger, Indicator Light, Base Holder for 36V 350W 250W 200W Motor

LITHIUM BATTERY WILL NOT CHARGE



Sometimes, lithium batteries become too low to charge, necessitating a careful boost in voltage using a compatible charger. If your lithium battery is not charging to 100%, it might be experiencing calibration issues. In such cases, allowing the battery to discharge completely before recharging can help recalibrate the charging cycle.



Solution: Charge the bare lithium battery directly using the charger with over-voltage protection, but do not use universal charge. It could be quite dangerous. Root cause 2: Uneven current. Due to contact resistance or detection of charge, the current is inconsistent caused by the uneven charge of the cell. In the short-term storage (12 hours



However, a lithium battery is not the right choice for every motorcycle. Here are the facts on these high-tech batteries. Because it is more efficient, a Harley-Davidson Lithium LiFE battery can charge much more quickly than an AGM battery. Using a 5 amp Harley-Davidson(R) Dual-Mode Battery Charger, a fully discharged 4Ah Lithium LiFE

LITHIUM BATTERY WILL NOT CHARGE



However, if your lithium battery is not charging, the BMS could be one of the factors contributing to this issue. One possible reason why the BMS might be causing problems is due to an imbalance in cell voltage. Each lithium-ion cell within a battery pack should have similar voltages for efficient charging. If there's an imbalance, it can



Comparing LiFePO4 with Other Battery Types
Lead-Acid Batteries. Lifespan: LiFePO4 lasts 4-10 times longer.; Maintenance: LiFePO4 requires no maintenance.; Weight: LiFePO4 is up to 70% lighter.; Gel Batteries. Charging Speed: LiFePO4 charges faster.; Durability: LiFePO4 can handle deeper discharges without damage.; AGM Batteries. Cost ???



Unlike most other battery types (especially lead acid), lithium-ion batteries do not like being stored at high charge levels. Charging and then storing them above 80% hastens capacity loss.

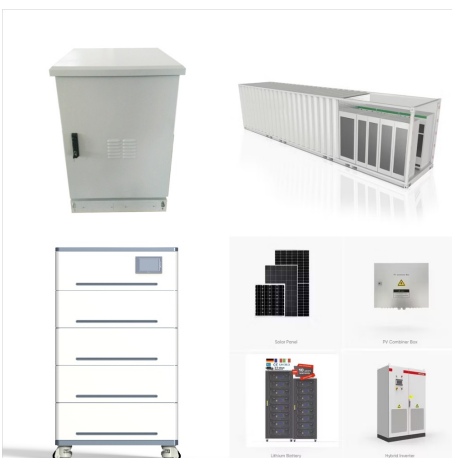
LITHIUM BATTERY WILL NOT CHARGE



Lithium batteries are sensitive to high temperatures, which can affect the charging process. If the battery or charger becomes too hot during charging, it may prevent the battery from charging effectively. To avoid overheating, make sure to charge your lithium battery in a well-ventilated area and keep it away from direct sunlight or heat sources.



Despite its reliability, sometimes the Kobalt battery not charging properly. So, don't panic; it's not an ordeal task. Luckily there are solutions to this You can't force a Lithium-ion battery to charge due to its perfectly managed ???

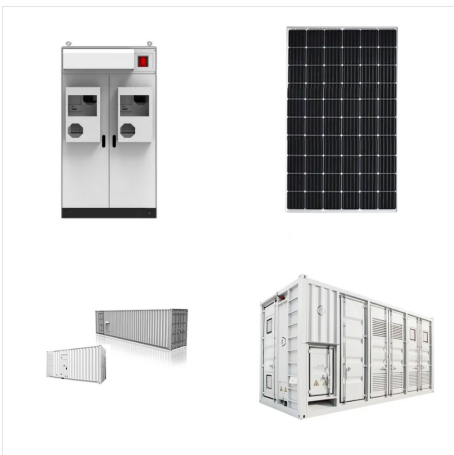


Recalibrating your lithium battery can help if it's not charging to its full capacity. Start by draining the battery completely, then charge it uninterrupted to 100%. This process can reset the battery's charging cycle and often ???

LITHIUM BATTERY WILL NOT CHARGE



- Use a charger with lithium battery activation to charge the battery to 12.4V/24.8 V or above
Negative: Confirm that the battery is not in low-voltage protection. Proceed to the remaining steps. 2. Exclude the possibility of BMS low-temperature protection.



If you are experiencing issues with your Ryobi battery not charging, you may be wondering whether it's time to replace your battery. If your Ryobi lithium-ion battery won't charge, there are a few things you can try to repair it. First, make sure the battery isn't too hot or too cold. If it is, let it cool down or warm up to room

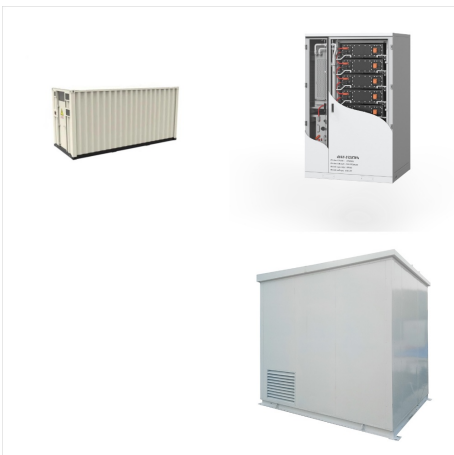


This is because constantly charging the lithium-ion battery to 100% and leaving it plugged in can damage the battery health. Sometimes letting your device charge fully is unavoidable. Don't worry about it if it does happen, but try to reduce how often it does and get into a routine of not letting it charge fully.

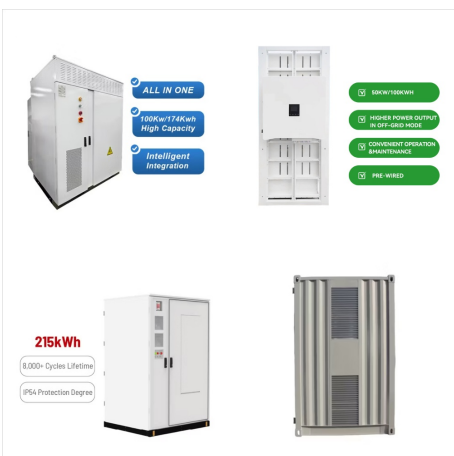
LITHIUM BATTERY WILL NOT CHARGE



Despite its reliability, sometimes the Kobalt battery not charging properly. So, don't panic; it's not an ordeal task. Luckily there are solutions to this You can't force a Lithium-ion battery to charge due to its perfectly managed mechanism that is managed by a battery management system (BMS). The BMS manages the mechanism and



So, if the lithium-ion battery in your smartphone has seen better days, there are a few things you can try to bring it back to life before spending the cash to replace it. If the battery on your gba sp will not charge just replace it rayovac makes a good replacement battery for the system and it has a higher capacity than the official



Why is Your EBL Battery Not Charging. These are the top reasons why your EBL battery is not charging. However, it would help if you remember that your NiMH is not charging correctly for various reasons. 1.5V red lithium-ion 3000mAh AA batteries and 1200mAh AAA 1.5V rechargeable batteries can only be charged with a dedicated lithium-ion

LITHIUM BATTERY WILL NOT CHARGE



- Use a battery charger with lithium battery activation to charge the battery to 12.4V/24.8 V or above. Negative: Confirm that the battery is not in low-voltage protection. Proceed to the remaining steps. 2. Exclude the possibility ???



Temperatures inside a lithium-ion battery can rise in milliseconds. Once a thermal runaway event begins, it's often hard to stop. That's why charging your lithium-ion batteries in the proper environment is crucial to safety and longevity. Similar chemical reactions may occur if your lithium-ion battery gets wet.



Chargers that do not go as high as 14.4V, such as onboard chargers for marine AGM or lead acid batteries that do not have a lithium setting will not be able to charge the battery fully. If possible, disconnect the batteries when they are completely charged. Can I charge a lithium battery using my car, van, or boat's alternator?

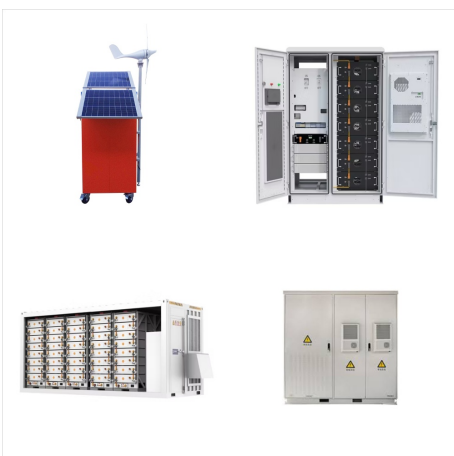
LITHIUM BATTERY WILL NOT CHARGE



Similar to others, after fewer than 10 uses, an LBX1540 lithium battery will not charge. The charger flashes red in the "broken battery" pattern. The battery is cool to the touch, and is NOT 100% discharged (when the appropriate button is pressed, two green lights in the array light up). Any help will be appreciated.



Troubleshooting Steps for Lithium Battery Not Charging. 1. Check the charger and power source. Begin troubleshooting by ensuring that the charger is functioning properly. Test it with another compatible device or try a different charger to ???



Thus, a lower power charger will charge the device slower while the charge rate can usually not be increased any more over the stock charger. Lithium-Ion Battery Temperatures Damaged lithium

LITHIUM BATTERY WILL NOT CHARGE



When storing your battery for more than 30 days, charge your battery at least once per month to improve performance and lifespan ; Follow the charging instruction as recommended in the manual supplied with the battery charger. Check wiring connections often to ensure they're secured properly. This prevents unnecessary draining.

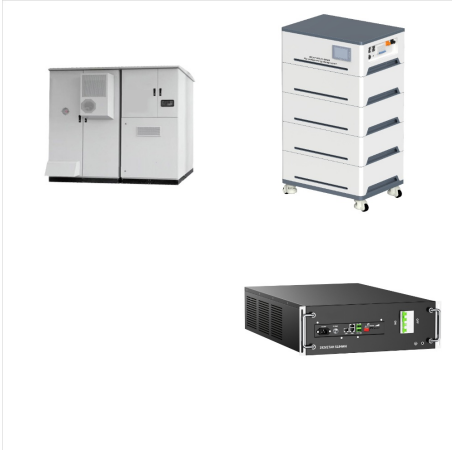


Let's delve into the primary reasons your lithium battery might not be charging and the steps you can take to remedy the situation. 1. Faulty Charging Cable or Port. One of the most common culprits behind a non-charging lithium battery is a faulty charging cable or charging port. Over time, cables can become damaged or worn out, leading to



Figure 1: Sleep mode of a lithium-ion battery. Some over-discharged batteries can be "boosted" to life again. Discard the pack if the voltage does not rise to a normal level within a minute while on boost. Do not boost lithium-based batteries back to life that have dwelled below 1.5V/cell for a week or longer.

LITHIUM BATTERY WILL NOT CHARGE



As we mentioned, not charging the lithium battery to its ideal condition is a common mistake owners make. The charging time for lithium batteries has many variables???like the specific charger and system utilized. There's a simple way to determine how long you should charge your battery???the amps of the charger and battery. Divide the amps



Can I charge my lithium battery with a lead acid charger? Lithium batteries are not like lead acid and not all battery chargers are the same. A 12v lithium battery fully charged to 100% will hold voltage around 13.3-13.4v. Its lead acid cousin will be approx 12.6-12.7v. A lithium battery at 20% capacity will hold voltage around 13V, its lead



Luckily, the majority of issues with the Bauer 20V lithium battery not charging properly are not that hard to fix. All that you need to do is to keep track of the details listed here, and you will be sorted in no time. Troubleshooting Bauer 20V Lithium Battery Not Charging. If you're lucky, the issue will be more with the charger than the unit.