

How much does a lithium ion car battery weigh?

Manufacturers made some batteries with lithium-ion, which is more expensive than lead-acid. Lithium-ion 12-volt batteries usually weigh 26 pounds. Alternatively, lead-acid 12-volt car batteries weigh 41 pounds. How Much Does a Lithium-Ion Car Battery Weigh? As stated before, lithium-ion batteries weigh approximately 26 pounds each.

How much do electric car batteries weigh?

Electric car batteries usually weigh from about 20 to 25% of the total car weight. The curb weight here shows the car's total weight with all the components needed for mobility. It doesn't consider the weight of any occupants or luggage that would occupy the cabin or cargo. The battery pack is an important part when looking at how much a car weighs.

Why does a car battery weigh so much?

Certain factors contribute to a car battery's weight. First and foremost, the contents of the battery are heavy. Lead is a heavy element that adds a lot of weight to the battery. That's why other batteries are often much lighter. The dimensions of the battery also add weight.

How much does a Tesla battery weigh?

It still has a curb weight below 5,000 pounds. For the Model S, its earliest batteries didn't even weigh up to 1,000 pounds. Now, its 100kWh battery weighs 1,377 pounds. Battery weight in its previous models ranges from 848 to 1,200 pounds. The Tesla Model X refresh long range weighs 1,183 pounds.

How much lithium is in an EV battery?

A typical EV battery has about 8 kilograms of lithium, 14 kilograms of cobalt, and 20 kilograms of manganese, although this can often be much more depending on the battery size - a Tesla Model S' battery, for example, contains around 62.6 kg (138 pounds) of lithium.

How to calculate car battery weight?

Calculating car battery weight can be straightforward if you have the right information. Here are the steps:
Check the Manufacturer's Specifications: Most batteries come with a label that includes weight information.
Weigh the Battery: If the label is missing, you can use a scale to measure the battery's weight.



Check out the following table for more examples of car battery weight. Vehicle make/model Group size BCI number Battery weight in pounds; Nissan Rogue: 35: 40: Honda Accord: H6: 44: Ford Mustang: 96R: 34 : Toyota Camry: 24: 41: BMW 3 Series: H7: 53: Nissan GTR: 51: 29: Chev Corvette: 75: 33: 12 Volt Battery size and weight.



Left: This lead acid battery of the same size as the Lithium Pros battery we use in BlownZ weighs 35 pounds, 14 ounces. Center: The Lithium Pros battery used in BlownZ weighs just nine pounds, six ounces. That's a weight savings of 26-1/2 pounds. Far Right: This is the Lithium Pros battery out of BlownZ.



We try out a 12V lithium-ion battery upgrade for your car. The lithium-ion battery cut a whole 29lbs from the weight of this Dodge Hellcat. Bradley Iger The Los Angeles-based outfit is the



PERFORMANCE BENEFITS. Weight: The ultralight Antigravity RE-START Batteries weigh from 8.5 lbs to 16 lbs (4-7 Kg) depending on the model. On average this equates to a weight loss from 35- 60 lbs (16-27 Kg) over a typical lead/acid battery! The incredible weight savings will increase your vehicle's performance in several key areas such as handling, allowing shorter braking ???



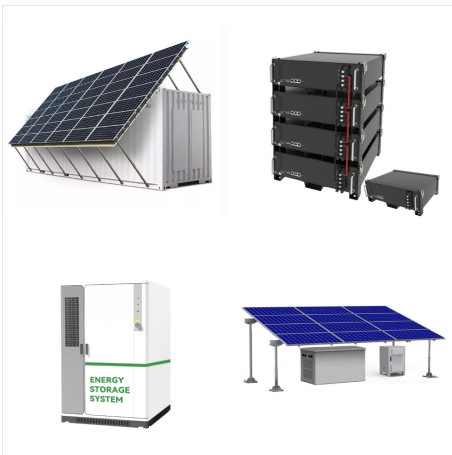
PERFORMANCE BENEFITS. WEIGHT: The ultralight Antigravity RE-START Batteries weigh from 8.5 lbs to 17 lbs (4-7 Kg) depending on the model. On average this equates to a weight loss from 35- 60 lbs (16-27 Kg) over a typical lead/acid battery! The incredible weight savings will increase your vehicle's performance in several key areas such as handling, allowing shorter ???



A lithium-ion or Li-ion battery is a type of rechargeable battery that uses the reversible intercalation of Li^+ ions into electronically conducting solids to store energy. the smallest Li-ion cell was pin-shaped with a diameter of 3.5 mm and a weight of 0.6 g, made by Panasonic. [155] A coin cell form factor is available for LiCoO_2 cells,



Lithium-Ion Car Battery Weight: 10 to 20 pounds (4.5 to 9.1 kg). AGM Car Battery Weight: 30 to 45 pounds (13.6 to 20.4 kg). Gel Car Battery Weight: 30 to 40 pounds (13.6 to 18.1 kg). Part 7. Which car battery weighs the lightest? Among the various types of car batteries, lithium-ion batteries are the lightest. They typically weigh between 10 to



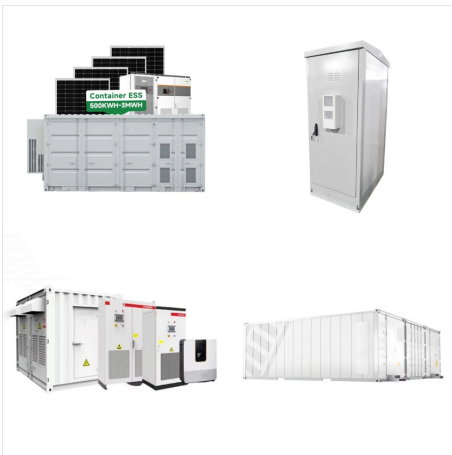
Car Battery Weight Chart (for 20 Popular Vehicles)
Here are some examples of battery weights found in many of the top-selling cars and trucks of 2021.
Lithium-Ion Batteries. When you're searching for batteries based on weight, you'll eventually come across some of the most efficient, expensive, and lightest batteries out there.



Normal Car Battery vs. Electric Car Battery Weight.
Conventional car battery weight is about 30 to 50 pounds (13 to 23 kg). Hybrid car batteries use NiMH or lithium-ion batteries and normally are several hundred weights. For example, the Toyota Prius battery weighs about 100 pounds (45 kg).



PERFORMANCE BENEFITS. Weight: The ultralight Antigravity RE-START Batteries weigh from 8.5 lbs to 16.5 lbs (4-7 Kg) depending on the model. On average this equates to a weight loss from 35- 60 lbs (16-27 Kg) over a typical lead/acid battery! The incredible weight savings will increase your vehicle's performance in several key areas such as handling, allowing shorter braking ???



Discover the factors that affect car battery weight, explore the average weight of different battery types, compare weights of various battery sizes, and learn about the weight range of batteries based on capacity. Weight Range: Lithium-ion batteries are generally lighter than lead-acid batteries and can range from as little as 10 pounds to



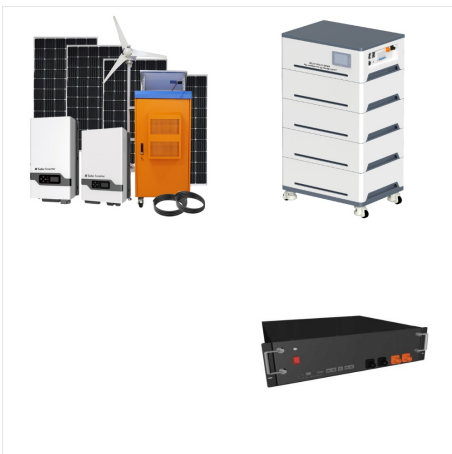
Antigravity Group-27 Lithium Car Battery Zoom
View Video: Our Price: ?647.40: List Price: ?995.99:
Saving Of: That makes the Antigravity Lithium-Ion Battery the most cost-effective weight-loss product hands-down, while offering better starting, handling and braking! A real performance value!



EV battery weight. An EV battery's weight is determined by its size and energy storage capacity. Usually, the bigger the battery, the more energy it can store and the more it weighs. For example, 6 to 12 kilowatt-hour (kWh) batteries typically weigh between 100 and 150 kg, while 60 to 100-kWh batteries range from 350 to 600 kg. Of course, how



PERFORMANCE BENEFITS. Weight: The ultralight Antigravity RE-START Batteries weigh from 8.5 lbs to 16.5 lbs (4-7 Kg) depending on the model. On average this equates to a weight loss from 35- 60 lbs (16-27 Kg) over a typical lead/acid battery! The incredible weight savings will increase your vehicle's performance in several key areas such as handling, allowing shorter braking ???



The DL+ 60Ah battery is built with Dakota Lithium's legendary LiFePO4 cells. 5,000+ recharge cycles (roughly 5 year lifespan at daily use) vs. 600 for other lithium batteries or lead acid. Optimal performance down to minus 20 degrees Fahrenheit (for winter warriors). Plus twice the power of lead-acid batteries at half the weight.



Buy Enduro Power 12V Lithium Battery - 100Ah
Lightweight LiFePO4 Deep Cycle Battery, 100A
BMS 12 Volt Lithium Batteries for RV, Car, Camper,
Off Grid, Marine, Golf Cart, and Trolling Motor:
Batteries - Amazon FREE DELIVERY possible on
eligible purchases



One of the most important aspects of building a
great racing car is weight. The best way to save
weight is to replace an existing battery with a super
lightweight Braille unit and then mount it in the best
place on the chassis to improve weight distribution.
Looking for a customised lithium battery solution?
Designed, built and tested in



Lithium-ion batteries Christian de Looper / Digital
Trends. Lithium-ion batteries have become the
dominant choice for powering EVs, offering a range
of advantages over other battery technologies.



Buy Litime 12V 300Ah Lithium LiFePO4 Battery, Built-in 200A BMS, Max 2560W Power Output, Easy Installation, 4000+ Deep Cycles, FCC& UL Certificates, 10-Year Lifetime, Perfect for Off-Grid, RV, Solar.: 1/3 Lightweight & 4000+ Cycles???

LiTime LiFePO4 Battery is smaller and 1/3 the weight of the lead acid battery at the same capacity, which



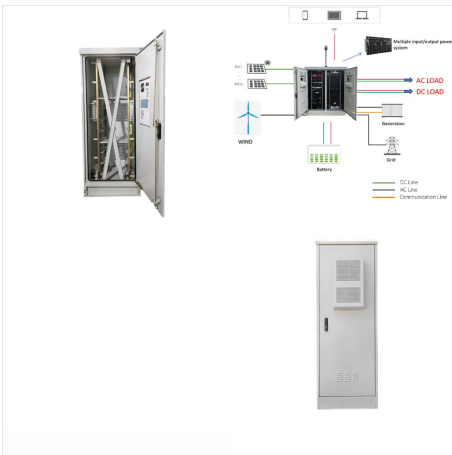
On average, lithium-ion batteries used in electric cars have a weight of approximately 120-180 kilograms per kWh of capacity. However, newer battery chemistries such as solid-state batteries may have a lower weight per kWh.



PERFORMANCE BENEFITS. Weight: The ultralight Antigravity RE-START Batteries weigh from 8 lbs to 16.5 lbs (4-7 Kg) depending on the model. On average this equates to a weight loss from 35- 60 lbs (16-27 Kg) over a typical lead/acid battery! The incredible weight savings will increase your vehicle's performance in several key areas such as handling, allowing shorter braking ???



PERFORMANCE BENEFITS. Weight: The ultralight Antigravity RE-START Batteries weigh from 8.5 lbs to 16.5 lbs (4-7 Kg) depending on Model. On average this equates to a weight loss from 35- 60 lbs (16-27 Kg) over a typical Lead/Acid Battery! The incredible weight savings will increase your vehicle's performance in several key areas such as handling, allowing shorter braking ???



"Energy density" means they can store more energy for a given weight, so you can get a lot more energy out of a lithium-ion battery, which means more range. Electric car battery technology



PERFORMANCE BENEFITS. WEIGHT: The ultralight Antigravity RE-START Batteries weigh from 8.5 lbs to 17 lbs (4-7 Kg) depending on the model. On average this equates to a weight loss from 35- 60 lbs (16-27 Kg) over a typical lead/acid battery! The incredible weight savings will increase your vehicle's performance in several key areas such as handling, allowing shorter ???



Check out the deal on Antigravity H7 / Group 94R Lithium Car Battery (60Ah) at BatteryMart . Browse aftermarket AGM replacement car batteries today at Battery Mart! We also carry a variety of maintainers and car battery chargers for sale from leading manufacturers. Weight: The ultralight Antigravity RE-START batteries weight from 8.5 to



What Determines Electric Car Battery Weight.
Electric car batteries are made up of thousands of smaller cells connected together to form a large battery pack. The most popular battery chemistry used for EVs is lithium-ion, which offers an optimal trade-off between energy storage capacity and price.