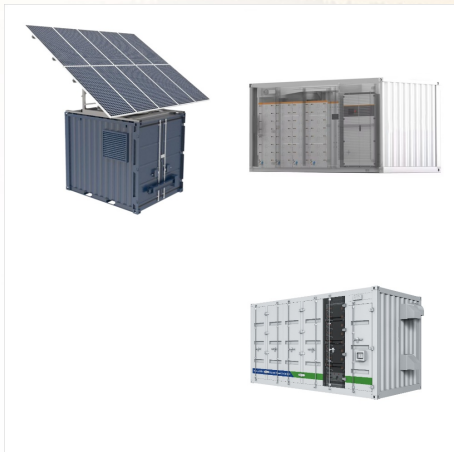
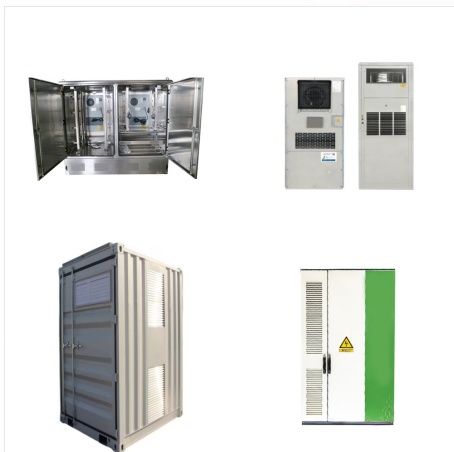




Look at Marine Deep Cycle Lithium Iron Phosphate LiFePo4 batteries. The 3 top rated for bass boats are: Iconic, Dakota and Millertech. those batteries are on sale. 1 36V 100 AH is also popular but higher cost. Cranking and battery AGM's are still popular and 12V 50 AH house battery. non-transferable case warranty. In most cases, the



When selecting a battery for your bass boat, there are several factors to consider, including capacity, voltage, weight, and maintenance requirements. A. Battery Type: There are two main types of batteries used in bass boats: lead-acid and lithium-ion. Lead-acid batteries are more affordable, while lithium-ion batteries are more expensive



A marine lithium cranking battery, specifically, is designed to provide the initial burst of energy required to start your boat's engine. This cranking ability is vital for a smooth ignition process, especially in adverse conditions.

# LITHIUM CRANKING BATTERY FOR BASS BOAT



BBCBoards is the leading online community for Bass Boat connections. If this is your first visit, be sure to check out the FAQ by clicking the link above. You have to register before you can post. To start viewing messages, select the forum that you want to visit from the selection below. Do not use lithium cranking batteries with Mercury

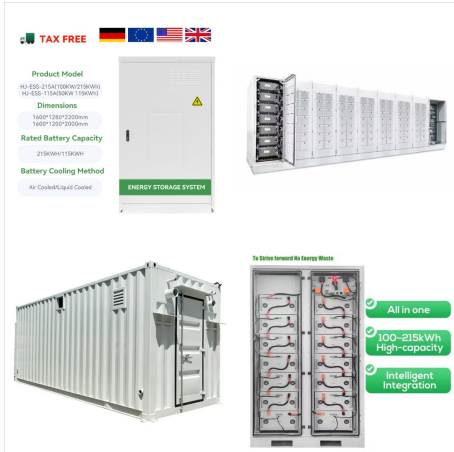


Conversely, choose a cranking battery for starting your engine. Cranking batteries are engineered to deliver short and strong bursts of power. The marine industry offers three battery sizes: 24, 27, and 31. Minn Kota recommends a group 27 size for deep cycle batteries, but consider the size of your boat's compartments before deciding. BATTERY



This 12V 150AH Cranking Battery is plug and play for starting or deep cycle applications including Marine, RV, Golf, Solar, Off Grid, Propulsion and other applications requiring a lightweight lithium battery to replace Lead Acid, Gel or AGM Batteries

# LITHIUM CRANKING BATTERY FOR BASS BOAT



At RELiON we want to make it very simple and clear as to why lithium batteries are the best choice for your bass boat. LiFePO4 Batteries Increase Bass Boat Performance. as some are intended specifically for producing cranking power for engine startups and others are used exclusively for running your trolling motor and fish finder



The Ultimate FAQ Guide to Lithium Batteries for Bass Boats & Trolling Motor Applications, hosted by professional angler Miles Burghoff, walks through each step of the process and answers key questions. thus giving them cranking ability. Auxiliary Battery: This battery powers all the electronics in your bass boat, including the pumps, lights



Cranking battery included - Our advanced BMS and 1100 cranking amps are compatible with all major brands up to 250hp Typical Lithium Marine Bass Boat Battery Setups. For the starter battery, our bass boat customers (most of which have 200-250hp 4-stroke motors) typically go with our recommended Ionic Deep Cycle 12V 125Ah lithium marine

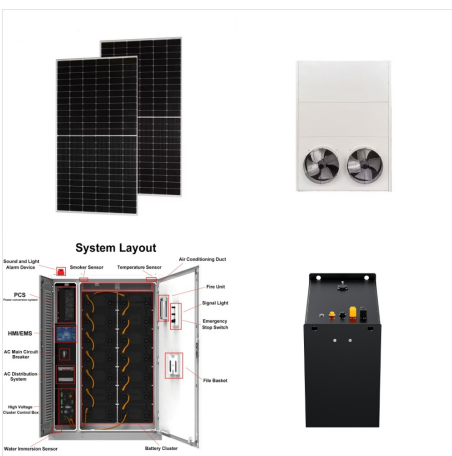
# LITHIUM CRANKING BATTERY FOR BASS BOAT



If you are looking to use a lithium battery as a cranking battery in your car, truck, RV or boat then the answer is a resounding no. If you are looking for a battery for your motorcycle, jet ski or ATV, then yes, an X2Power LiFePO4 battery is a suitable choice for a starting battery.



Interstate Batteries SRM-31; Lithium Pros M3140-36 36V 40Ah Trolling Battery; Best Starting/Cranking Marine Batteries Bass Pro Shops Pro Series AGM X-900 Marine Battery Group 27 - Our Pick! Available at Bass Pro. Type: AGM RC: 195 minutes MCA: 1080 Amps CCA: 930 Amps Weight: 68 lbs. Size: Group 27; 6.77 x 12.44 x 8.74 (with terminals)



When selecting the right lithium cranking battery for your bass boat, it's essential to consider factors like power requirements, size and compatibility and budget considerations. Moreover, it's crucial to follow the recommended safety and care measures, such as safe charging practices, appropriate storage and handling, and regular maintenance.

# LITHIUM CRANKING BATTERY FOR BASS BOAT



Explore a wide selection of quality outdoor gear at Bass Pro Shops, the trusted source for Tracker Lithium Super High Output Lithium Marine Starting Battery . With our low price guarantee, get the best brands and latest gear at unbeatable everyday prices.



Power Your Aquatic Adventures. Cruisers, racers and anglers want to spend as much time on the water as possible. Long-lasting RELiON lithium iron phosphate (LiFePO4) batteries fit all types of watercraft and deliver the dependable power for everything you need, from punching your holeshot in competition to running your A/C at the dock.



Most bass boats require two basic types of 12-volt batteries. The cranking (starting battery) starts the main engine. Cranking batteries are designed to provide short, big bursts of energy to start ???



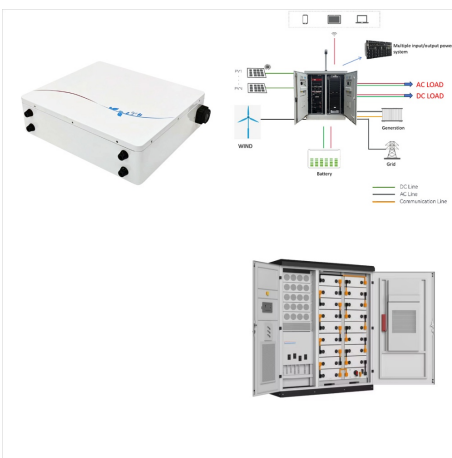
# LITHIUM CRANKING BATTERY FOR BASS BOAT



Key Takeaways. Upgrade to Lithium: For boating enthusiasts and marine professionals, upgrading to deep cycle lithium batteries offers a significant performance boost, with twice the power of traditional batteries, ensuring your marine adventures or operations are more efficient. These batteries are ideal for trolling motors, provide ease of use, last a long time, and ensure ???



This is a Dual Purpose Cranking / Deep Cycle Lithium Marine Cranking Battery Comparable to 900 cranking amps This battery can be used as a starter battery for 25hp to 300hp, Yamaha, Mercury, Suzuki and Evinrude Motors Proprietary Battery Management Systems (BMS) with power terminal cut-off and recovery Built in cold weather protection ??? Does not take a charge if ???



Can everyone share their thoughts on this potential setup? This is for a 23" skeeter bay boat that's mostly used for bass fishing. 1. Cranking Battery to run 250SHO : Duracell Ultra Group 31 AGM 12V 125ah. I have to run an AGM (non-lithium) for crank battery since Yamaha says it will void warrant

# LITHIUM CRANKING BATTERY FOR BASS BOAT



I'm talking about lithium, not going to go that route. Also, it would need to be plug and play with my 2008 ranger 4 bank. You have about the worst battery you could have for a bass boat cranking battery. Look at that reserve capacity (RC), 155 minutes. Interstate AGM, Deka AGM and a few other top brands, will have 200 minutes or more RC.



I still use an Everstart Marine battery for my cranking battery because all it does is start the boat and run my livewells. These are simple, no-nonsense lead acid batteries. They will degrade over time and not put out as much power in the latter years.



I run the 215ah Lithium Pro starter. With the Power Pole Charge, that setup is incredible. I was having issues with the "aging" AGM (admittedly most likely self induced, but on a battery less that 2 years old) with it taking whole days to charge, and having random power reboots on all 12V systems.

# LITHIUM CRANKING BATTERY FOR BASS BOAT



Amp lithium seems to be doing really well for this type setup. It really takes a big load off the cranking battery and is virtually interference free. Since Lithium is the choice, weight no longer is even considered. In the fishing world Lithium is becoming the go to power source for sure.



So what is your ultimate Bass Boat Battery set up? I have some ideas, but I'd like to hear yours. Right now I am considering 2 x Group 31 in parallel 1 x Lithiums 36V 50 AH 1- 125ah lithium for cranking and electronics Never have to worry about power, ever. WStorey. View Profile View Forum Posts Private Message Member Join Date Dec 2019



Unveiling the Champion: The Best 12V Dual Purpose Cranking Lithium Battery for Bass Boating. Every inch of space on your boat is precious, and every ounce counts. That's why Epoch Batteries has prioritized a lightweight and compact design without compromising on power or durability. Shedding unnecessary bulk, this battery maximizes your



# LITHIUM CRANKING BATTERY FOR BASS BOAT



How Many Lithium Bass Boat Batteries Does a Pro Angler Need? The number of batteries a pro angler needs largely depends on their boat and competing style. For example, Chris Groh has a Phoenix 20PHX with a 4Stroke Mercury 250 ProXS. He also has a Minn-Kota and Humminbird graphs and trolling motor. He meets his energy needs with three 100Ah



A Quick, how-to guide on installing Dakota Lithium Batteries in a Bass Boat with DL Ambassador, Chase Sansom. 15% Off ??? Code: SeasonEndSale ??? Exclusions Apply, Valid 10/28 ??? 11/30. Your cart (0) Search your battery or use. Close.



CB: "I use a total of four lithium batteries, three RB100s and one RB100-HP. And all four of these are in my tournament rig bass boat in a Falcon F205. One of them is for my cranking battery, the RB100-HP, and the other three are for a 36V trolling motor." Why did you decide to switch to lithium batteries?