

How many wires does a lithium ion battery have?

Though there are only two wires delivering a charge to the battery, the on-battery circuit board monitors the condition of the charge and discharge rates as well as the temperature of the battery. Information about replacing a 3 wire LIPO into a device that previously used a 2 wire battery is very scarce.

How do lithium ion batteries work?

In lithium ion battery systems, there exist two such connectors - the battery terminals positive and negative. On one side, the positive terminal connects to the cathode of the battery. Then, the negative terminal connects to the battery's anode. A safe and secure connection is vital for a battery's efficient operation.

What are the three terminals on a lithium ion battery?

When not in use, ensure batteries are stored properly. This step protects them from dust, moisture, and temperature extremes. As a reminder, for those wondering what are the three terminals on a lithium-ion battery, they are positive, negative, and a temperature sensor.

Which terminal material is best for lithium batteries?

Lead terminals are hence a stable, reliable choice for lithium batteries. The Significance of Terminal Material in Lithium Batteries! Lithium battery terminals are vital for battery efficiency.

Can a 2 wire battery be connected to a 3 wire Charger?

However a 2 wire battery connected to a three wire charger should have the thermistor connection on the charger terminated, usually with 10Kohm, to ground. That simulates a three wire battery, and fools the charger into passing current by signalling the temperature is "normal".

What is the white wire on a 3 wire battery?

By measurement and varying the temperature of my test 3 wire battery, it seems that the white wire is simply one end of a 10K thermistor that connects to ground/black/common at the other. 10K seems the most usual thermistor rating, but be aware manufacturers can choose any thermistor.



2 wires connect to the battery, and in general the extra 2 wires connect to a thermistor to allow temperature sensing of the battery. Although for more efficient wiring this could be done with a common ground giving a total of 3 wires, which is rarely seen.



Lithium Polymer Ion Battery LP801622 3.7V 200mAh 0.74Wh with PCM and wires 20mm. 2000+ Models Lithium Polymer Ion Battery on Sell, Variety Of Dimensions & Capacity, Get a Free Quotation. This Lithium Polymer Ion Battery LP801622 3.7V 200mAh 0.74Wh size is 8mm x 16mm x 22mm, it with a protection circuit module and wires 20mm.



Lithium ion batteries in parallelis to increase the amp hours of a battery (i.e. how long the battery will run on a single charge). For example if you connect two of our 12 V, 10 Ah batteries in parallel you will create one battery that has 12 Volts and 20 Amp-hours.



EEMB 3.7V Lithium ion Battery 320mAh 402535  
Rechargeable 3.7 Volt Lipo Battery Pack with Wire  
Molex Connector for Speaker and Dashcam-  
Confirm Size & Polarity Before Purchase Qimoo  
3.7V Lipo Battery 2800mAh 804060 Rechargeable  
Lithium Polymer Battery Pack with JST PH2.0mm  
Connector for Electronic Device



In today's world, lithium-ion batteries have become  
integral to countless applications, from consumer  
electronics to electric vehicles. Whether you're  
building a custom battery pack for a solar power  
system or designing a high-capacity battery bank for  
an electric bike, understanding how to connect  
lithium-ion batteries safely and effectively is crucial.



EEMB Lithium Polymer Battery 3.7V 150mAh  
401730 Lipo Rechargeable Battery Pack with Wire  
Molex 1.25mm Connector for Speaker and Wireless  
Device- Confirm Device & Connector Polarity Before  
Purchase Remove. Octelect 3.7V Lithium ion  
Polymer Battery 2000mAh 103454 Lipo Battery  
Rechargeable Lithium Polymer ion Battery with JST  
Connector. 3.9



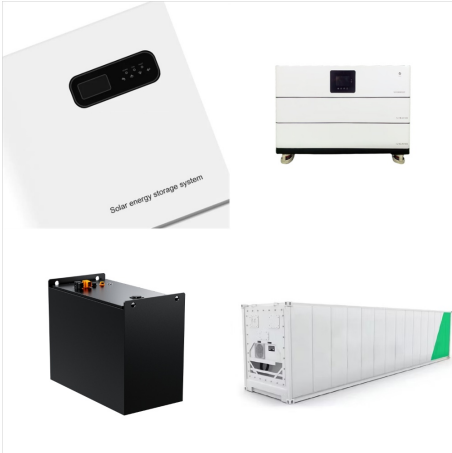
Get rechargeable lithium ion polymer battery from LiPol Battery Co., Ltd, samples available, contact us. This Lithium ion Polymer Battery LP1260100 3.7V 10000mAh 37Wh size is 12.0mm x 60mm x 101mm, it with a protection circuit module and wires 50mm and 10K NTC and JST PHR-3.



I've got a BlueTooth keyboard that takes a 3.7v lithium-ion polymer battery. There are three leads coming from the battery: red, black and yellow. What is the function of the yellow lead, and is there a way to use a two lead battery in its place? I'm asking because I've not found a like for like replacement. The battery in it now is a 232535.



Such types bolt wires to terminals, ensuring a secure connection. Torque defines how firm this connection is, usually between 10 to 20 Newton Meters. Safe, resilient, these terminals guarantee steady power flow, even ???



Two possibilities! 1) If your battery does not have a protective board, the three wires are: the red wire is the positive pole, the black wire is the negative pole, and the other color wires are the ???



The old battery has three wires: red, black and white. The white wire connects to a pad on tablet's mainboard labeled "T", which I have been told is used to connect to the temperature measuring thermistor built into the battery. However, the problem is that my new battery has only two wires: black and red.

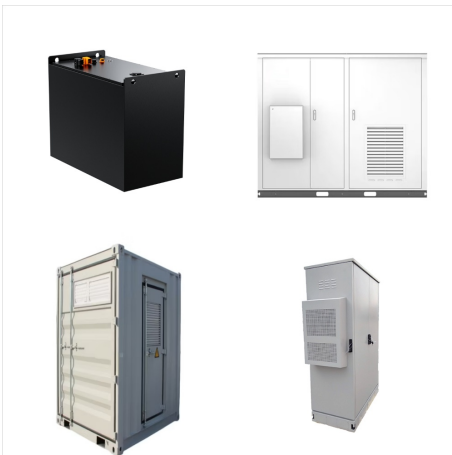


Lithium-ion batteries are extremely power dense and over the last 10 years, the cost of a given amount of lithium-ion energy has come down 10-fold. There are, however, two major shortcomings when it comes to lithium-ion battery cells. First, the capacity of ???





Rechargeable Lithium Ion Battery ; 3.7V 3000mAh with SM 2P Plug ; Length: 2.5", Width: 1.38", Height: 0.75". Weight: 3.00 oz ; Rechargeable Times1000 ; rather than clipping off the connector on the new battery and fighting with the short length of the attached wires, I simply clipped out the old bad battery out of the solar unit



mm Lithium-Ion Battery Jauch Quartz's protected batteries are ideal for flashlights, bike lights, lanterns, table vents, and electronic toys. Jauch Quartz's LI21700JSV-50 lithium-ion (Li-ion) battery has an integrated electronic circuit mounted on the bare cell. This circuit protects the battery against common dangers, such as



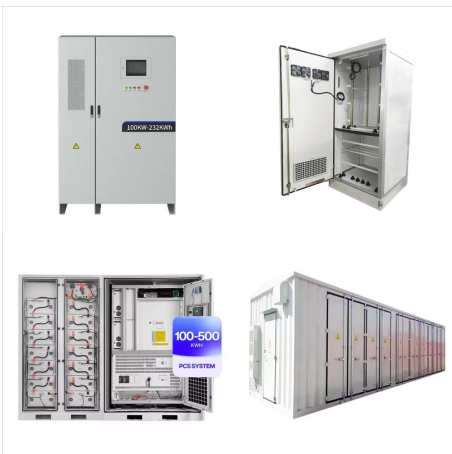
But today I bought you guys a solution by which you can solder a 3.7v lithium ion cells. Materials Required. Bevel Tip For Solder ( You can get it on hardware store or you can make your own by cutting the pointed tip and rubbing tip on whetstone or concrete) See Image. Solder Iron. Wires (Better to use Copper flex Wires) See Image



Custom Li-Ion 18650 Battery: 7.2V 3.4Ah (24wh, 2A rate) with 3 wires : Custom Li-Ion 18650 Battery: 7.2V 3.35Ah (24Wh, 2A rate, 2S/S, NCR18650B) with 3 wires - UN38.3 Passed. Your Price: Not for general sales. Not for general sales. Product ID # 10857 Lithium Battery Shipping Regulation----- Recommendations on How to get ???30% Rated



Battery Specification & Details: Battery Type: Round Lithium ion Polymer Battery Configuration: 1S1P Part Number: LPR473736, 473736 Voltage: 3.7V Capacity: 530mAh Wat-Hou Rating: 1.961Wh Weight: Appr. 10.6g Protection Circuit Module(PCM): Yes Thermistor(NTC): No



The third wire could be for a temperature sensor. It would probably work just fine without it but that's not recommend ?????. You could always pull the small circuit board out of the old battery and solder it to the new battery.



Buy EEMB Lithium Polymer Battery 3.7V 250mAh 502030 Lipo Rechargeable Battery Pack with Wire JST 2.0mm Connector for VXi Blue Parrott- Confirm Device & Connector Polarity Before Purchase: 3.7V - Amazon FREE DELIVERY possible on eligible purchases



This is a 3 pin(3 wire) version of this LiPo battery. The yellow wire is connected to an onboard 10k?(C) NTC Temperature Sensor. We also sell the 2 pin version of this battery, without the NTC temperature sensor. Type: Rechargeable Polymer Lithium Ion battery Size: 35 x 30mm Width: 5mm Weight: 11g Cable Length(excluding connector): 75 to



This is a 3 pin(3 wire) version of this LiPo battery. The yellow wire is connected to an onboard 10k?(C) NTC Temperature Sensor. We also sell the 2 pin version of this battery, without the NTC temperature sensor. Type: Rechargeable Polymer Lithium Ion battery Size: 25 x 20mm Width: 6mm Weight: 7g Cable Length(excluding connector): 75 to 100mm





Such types bolt wires to terminals, ensuring a secure connection. Torque defines how firm this connection is, usually between 10 to 20 Newton Meters. Safe, resilient, these terminals guarantee steady power flow, even under strenuous conditions. for those wondering what are the three terminals on a lithium-ion battery, they are positive



I am new to electronics and am trying to make something with a 3.7C 500mAh Li-Po battery. There is a temperature wire (white) and I was wondering if I could leave it unconnected? Also how would a 3



This is a 3 pin(3 wire) version of this LiPo battery. The yellow wire is connected to an onboard 10k?(C) NTC Temperature Sensor. We also sell the 2 pin version of this battery, without the NTC temperature sensor. Type: Rechargeable Polymer Lithium Ion battery Size: 50 x 34mm Width: 11mm Weight: 34g Cable Length(excluding connector): 75 to



Hi, Sorry if I'm being naive but I just got a lithium -Ion rechargeable battery pack (8.4V 2000mAh(2C)) and guess what..Yeah it has got 3 wires (a red one,a yellowish creamy one and a black one).Now could u please tell me what each one means and also the need for doing this.Btw what does 2C mean ? Thanks in advance. charge91



Buy EEMB Lithium Polymer Battery 3.7V 1100mAh 603449 Lipo Rechargeable Battery with Wire JST 2.0mm Connector for Speaker and Wireless Device- Confirm Device & Connector Polarity Before Purchase: 3.7V - Amazon FREE DELIVERY possible on eligible purchases Li-MnO??? batteries; and rechargeable lithium battery lithium-ion batteries, lithium



Wiring lithium-ion batteries in series is a common practice to increase overall voltage, but requires careful attention to detail and adherence to safety guidelines. Always refer to the specifications provided by the battery manufacturer and use a BMS to monitor and protect the battery pack. By following these steps, you can create a reliable and high-voltage power ???



In this article, we will explain why you would want to wire lithium-ion batteries in series, how you wire them in series and how to charge battery cells while in series. Cell Savors. Open main menu. An NMC lithium-ion battery ???



Lithium Battery Wiring Instructions All battery interconnects, busbar and device connections to resist vibration by using nylon insert lock nuts, thread locking fluid, or lock washers (split lock or external tooth). Battery Bank Parallel Connection Notes No more than four (4) lithium batteries can be connected.



Buy EEMB Lithium Polymer Battery 3.7V 1800mAh 103450 Lipo Rechargeable Battery Pack with 2 Wires JST 2.0mm Connector for Speaker and Wireless Device- Confirm Device & Connector Polarity Before Purchase: 3.7V - Amazon FREE DELIVERY possible on eligible purchases 1 lithium ion. 1 lithium polymer, 1 nonstandard battery. 1 lithium polymer.



36 Volt Lithium Battery. B-LFP36-60; B-LFP36-60M;  
B-LFP36-100M; 48v Lithium Ion Battery. Ultra-Thin  
5 kwh Lithium Ion Battery; B-LFP48-104E;  
B-LFP48-120E; B-LFP48-160E; B-LFP48-200PW;  
LITHIUM BATTERIES FOR FORKLIFTS; 5kW  
Hybrid Off Grid Inverter | Pure Sine Wave | Dual  
MPPT | BSLBATT; High Voltage Lithium Battery.  
High Voltage Lithium Solar