



Why are lithium batteries not good for starting?

Charging them in sub-freezing temperatures can cause lithium plating, a process that will cause a loss of battery capacity and also cause short circuits, causing permanent damage to the battery. Why Aren't Lithium Batteries Good for Starting? The issue isn't necessarily with the power output of the batteries.

How long does a lithium battery last?

11 YEAR USA WARRANTY: Dakota Lithium's batteries were born in the rugged landscape of North Dakota and are backed by a "Best in Class" 11 Year Warranty. BUILT TO LAST: Our LiFePO4 Batteries deliver 2,000+ cycles in recommended conditions. A typical Lead Acid battery only has 500 cycles.

How safe is a lithium ion deep cycle battery?

Engineered with a built-in high temp cut-off to prevent charging over 122 °F (50 °C), this lithium ion deep cycle battery 12V offers enhanced safety compared to traditional lead acid batteries.

What is a Marine Lithium deep cycle battery?

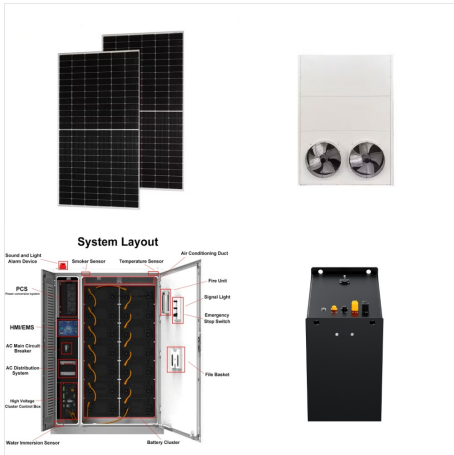
Built-In BMS & Convenience & Maintenance Free - This marine lithium deep cycle battery is designed to meet your high performance demands, featuring a robust Battery Management System (BMS) that safeguards against overcharge, over-discharge, over-current, and short circuits. Its excellent self-discharge rate ensures reliability over extended periods.

What makes Dakota lithium batteries different?

Built Smarter: All Dakota Lithium Batteries include Battery Management System (BMS) technology that controls cell balancing, low and high voltage cutoff, and short circuiting. Dakota Lithium batteries stand out for their remarkable lightweight construction, thanks to advanced lithium iron phosphate technology.

What is a DL 100Ah battery?

The DL 100Ah battery is built with Dakota Lithium's legendary LiFePO4 cells. Ideal for deep cycle applications like trolling motors, RVs, home solar, or boating where you need lots of power for a long time. Our most compact and powerful battery yet with 320 Amp Hours of capacity plus 1,000 CCA of engine starting power.



The best lithium car batteries for starting cars, trucks and boats. #PowerYourPassion with 1,000 cold cranking amps of Dakota Lithium power. 15% Off ??? Code: SeasonEndSale ??? Exclusions Apply, Valid 10/28 ??? 11/30 Dakota Lithium batteries give you 1,000 cold cranking amps of engine starting power, 10X the number of engine starts per



From iPhones to Teslas, lithium-ion battery technology is ubiquitous in today's world. It's the chemistry of choice for a wide range of applications due to its high charge density relative to its



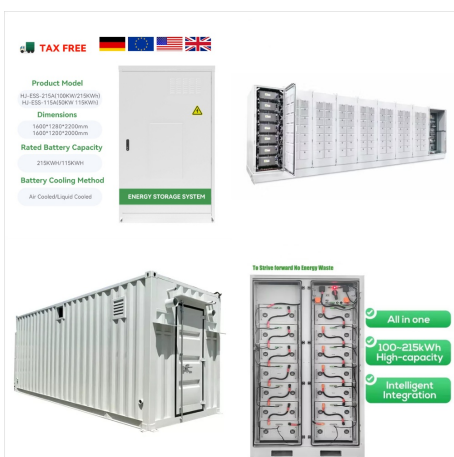
The ultimate all-purpose battery for both starting engines & deep cycle applications. With 1,000 cold cranking amps (CCA) and a high continuous discharge rate, the DL+ 135Ah has 5X the ???



Figure 1: Sleep mode of a lithium-ion battery. So, having read that the cleverer chargers start by pulsing the battery to test its condition, I started to think maybe doing this many times might just tip the battery over the threshold. Assuming Nikon's charger is a clever one! I inserted and removed the battery from the standard Nikon



Power: The high cranking power of the Antigravity Lithium-Ion Battery can start Motors more efficiently than Lead/Acid Batteries! Our Lithium batteries have over twice the Cranking Power of the same size Lead/Acid battery! This equates to better Starting due to less voltage sag on start-up, and a faster spinning motor as well in most cases.



M3110 12V 110Ah Marine Starting Battery ??? The M3110 is a Lithium Ion Battery for the angler who will accept no compromises in a starting battery. This is the most capacity and cranking power that we can fit in a standard Group 31 case. (13??? L x 6.81??? W x 8.43??? T) It features one of the most advanced internal battery management systems in the marine industry today.



The best marine batteries are Dakota Lithium. Upgrade your boat with 3X the power, half the weight, and 5X the lifespan. 11 year warranty. 15% Off ??? Code: SeasonEndSale ??? Exclusions Apply, Valid 10/28 ??? 11/30 Marine Starting Batteries; Motorcycle Batteries; Overland 4X4 Batteries; Powersports Batteries; Truck Batteries; Battery



NEW Hi-Power lightweight ATZ10-RS lithium battery with our RE-START Technology (built-in jump-starting). Never be stranded by a dead battery again! The ATZ-10 Re-Start Battery is an extremely lightweight and high-power Lithium-Ion replacement for the heavy lead/acid YTZ-10 battery found in many Motorcycles including most Street and Off-Road



RELiON's RB100-HP is a Group 31 12V, 100Ah deep-cycle lithium-ion battery built for starting and cycling. The RELiON RB100-HP 12V 100Ah Lithium Battery for Starting & Cycling has increased peak amps for starting motors, electric start generators and other high-amp-draw devices ??? plus, it doubles as a house battery, powering peripherals



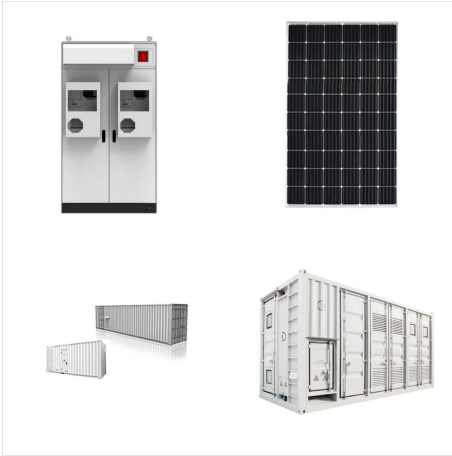
NEW Hi-Power lightweight ATX20-RS lithium motorsports battery with our RE-START Technology (built-in jump-starting). Never be stranded by dead battery! Directly replace lead/acid YTX-20 series. The ATX20-RS is an extremely ???



N3110-S 12.8V 110Ah Lithium Ion Starting Battery
This battery meets the Sept 19, 2022 Mercury specifications for a lithium-ion engine start battery. Compatible with all outboards and alternators
NMEA 2000 connectivity 12.8V 110Ah (1,410 Whr)
260 Reserve Minutes BCI Group 31 size, (13???L x 6.81??? W x 8.43??? T) 32 lbs N311



Buy an Ionic 12 Volt 125Ah Lithium Deep Cycle Battery now, free shipping. You can use it as a starting ??? dual Lithium battery comparable to 1,100 cranking amps for 250hp engines. Ionic Deep Cycle has an internal microprocessor-controlled battery management system (BMS) that monitors the key operational parameters during charging and



Nowadays you can just hook your depleted lithium battery up to a dedicated lithium battery charger and it will start charging it. Lithium batteries do not have "memory" like lead acid batteries do. They can sit partially charged or fully charged for a long time with no degrade in performance. They do have a limited number of charge cycles.



A lithium-ion starting battery is a type of battery that is specifically designed to provide the initial power needed to start a vehicle's engine. Unlike traditional lead-acid batteries, which use lead plates and acid electrolytes to generate electricity, lithium-ion batteries use lithium ions to store and release energy.



Our long lasting Lithium or Sodium ion car batteries are the best choices for gas or diesel engines, 12 V or 24V Compatible with all alternators. top of page. 850 725 0306. Contact Us. LARGE Diesel Engine Lithium Starting Batteries our specialty >Choice of Group / DIN Sizes >Choice of Amp hour size >Ample CA to start engine >Full BMS



? Learn how to revive your lithium-ion battery today!
Follow these 5 simple tips to improve its life and save money. Start your battery revival now! Tel: +8618665816616; Whatsapp/Skype: +8618665816616; Email: sales@ufinebattery ; English English Korean . Blog. Blog Topics . 18650 Battery Tips Lithium Polymer Battery Tips LiFePO4 Battery



Lithium-ion Battery. A lithium-ion battery, also known as the Li-ion battery, is a type of secondary (rechargeable) battery composed of cells in which lithium ions move from the anode through an electrolyte to the cathode during discharge and back when charging.. The cathode is made of a composite material (an intercalated lithium compound) and defines the name of the Li-ion ???



H5/Group 47 OEM Automotive Case size (directly replace stock battery).; LxWxH: 9.5 x 7 x 7.5 inches.; Amp Hour Options: 24 Ah, or 40 Ah.; High Power: 24Ah=1000CA, 40Ah=1500 Cranking Amps.; Exclusive RE-START Technology: Wireless Jump-Starting built-in; just press the button on your Keyfob remote.; Complete Battery Management System built-in.; Ultra Lightweight: Drop ???



The 12 Volt 40Ah Starter Lithium Battery brings you the best value available, with a 5 year limited warranty to give you peace of mind & free shipping. 12V 40Ah 1,400 Cranking Amp Lithium Battery: Your Reliable Lithium Starting Battery. Please read our frequently asked questions page for answers commons questions regarding lithium ion



Page 1 of 1 Start over Page 1 of 1 . Previous set of slides. Renogy 12V 50A DC to DC Battery Charger with MPPT, On-Board Battery for Gel, AGM, Flooded and Lithium Batteries, Using Multi-Stage Charging, Solar Panel and Alternator cabin, or marine use, then this lightweight, auto-balanced, ultra-safe, long-cycle-life lithium-ion battery is



LiFePo4 lithium-ion battery has a complete intelligent protection circuit to prevent overcharge, over-discharge, For overvoltage, overcurrent and other protection, one LiFePo4 lithium-ion battery is enough for each car. Car Start-Stop Lithium Battery GROUP 24 12V 60AH Car Battery with 1100CCA ??? High-Performance Automotive Battery with 60



This is a Dual Purpose Cranking / Deep Cycle Lithium Marine Cranking Battery Comparable to 900 cranking amps This battery can be used as a starter battery for 25hp to 300hp, Yamaha, Mercury, Suzuki and Evinrude Motors Proprietary Battery Management Systems (BMS) with power terminal cut-off and recovery Built in cold weather protection
??? Does not take a charge if ???



Better performance ??? with Ionic 12V 30Ah battery, you'll experience improved starting power, faster charging times, & a longer lifespan. Complete peace of mind with 5-year warranty. ???



Our lithium marine batteries last 10+ years; 4x longer than lead acid! They charge 5x faster, are up to 70% lighter & are 100% maintenance free. Try them today! The cranking (starting battery) starts the main engine. Cranking batteries are designed to provide short, big bursts of energy to start your engine quickly. The deep cycle battery



About This Product. MIGHTY MAX Lithium Iron Phosphate (LiFePO₄) engine start batteries are designed to replace flooded, AGM, and gel cell lead acid batteries in power sport applications such as motorcycles, ATVs, personal watercraft, lawn mowers, utility vehicles, scooters, and dirt bikes.



Its Chemistry is Lithium-Iron Phosphate (LiFePO₄), offering Cold Cranking Amps (CCA) of 900. Lightweight and maintenance-free, it excels in both outdoor and indoor applications, providing ???



The is a portable lithium-ion battery jump starter pack that delivers 1,000-amps for jump starting a dead battery in seconds. It features a patented safety technology that provides spark-proof connections and reverse polarity protection making safe and easy for anyone to use. Schumacher 600A Peak Lithium Ion Jump Starter with Digital



The RELiON RB100-HP was the first Mercury Marine approved lithium-ion starting battery and includes these product features: Six battery terminals versus the two on standard batteries, offering users more flexibility when connecting electronics to the battery. A flame retardant plastic case rated to UL94-V0



PERFORMANCE BENEFITS. Weight: The ultralight Antigravity RE-START Batteries weigh from 8.5 lbs to 16 lbs (4-7 Kg) depending on the model. On average this equates to a weight loss from 35- 60 lbs (16-27 Kg) over a typical Lead/Acid Battery! The incredible weight savings will increase your vehicle's performance in several key areas such as handling, allowing shorter braking ???



Group 75/78 OEM Automotive Case size (directly replace stock battery).; LxWxH: 9 x 6.85 x 7.85 inches.; Amp Hour Options: 24Ah, or 40 Ah.; High Power: 24Ah=1000CA, 40Ah=1500 Cranking Amps.; Exclusive RE-START Technology: Wireless Jump-Starting built-in; just press the button on your Keyfob remote.; Complete Battery Management System built-in.; Ultra Lightweight: Drop ???



N32215-S 12.8V 215Ah Lithium Ion Starting Battery

This battery meets the Sept 19, 2022 Mercury specifications for a lithium-ion engine start battery.

Compatible with all outboards and alternators

NMEA 2000 connectivity 12.8V 215Ah (2,752 Whr)

510 Reserve Minutes BCI Group GC12 size,

12.88"L x 7.13" W x 10.500" 46.6 lb