



What is Lithium Pros?

Lithium Pros is a company focused on bringing the highest performance, ultra lightweight lithium-ion batteries to the racing, EV, marine, and specialty markets.

What is a lithium Pro battery?

Lithium Pros batteries are constructed from multiple cells. Their batteries are built with high quality prismatic cells. This means the cells are a flat design, reducing the space and allowing them to be packaged more easily than other designs. Each cell is in fact an individual battery and needs to be treated as such.

How light is a Lithium Pros battery?

A Lithium Pros battery is extremely light when you compare its energy density. "A typical Lithium Pros battery has an energy density of about 150 watts of electricity per kilogram (or 2.2 pounds) while a typical lead acid battery offers only 25 watts per kilogram," explains Bennett.

How much does a lithium Pro battery weigh?

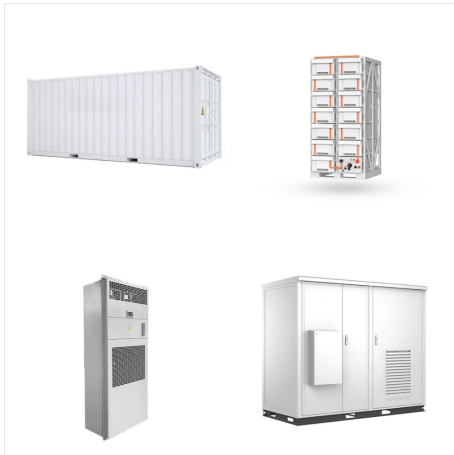
These batteries typically are 60-80 percent lighter than a comparable lead acid battery. Some of the largest models from Lithium Pros weigh only 9-1/2 pounds, compared to over 46 pounds for a typical lead acid battery of comparable size. A Lithium Pros battery is extremely light when you compare its energy density.

What's new in Lithium Pros batteries?

Lithium Pros recently announced a new line of batteries. These batteries offer all of the benefits of the existing lithium models and have a new embedded battery monitor built into the actual battery itself.

What battery management system does Lithium Pros use?

Lithium Pros uses an onboard battery management system in its T and L series batteries. This system manages several aspects of the battery's operation and protects it from premature failure. The T-series batteries use an onboard circuit board to monitor charging and protect the battery from being overcharged.



Buy ExpertPower 12V 100Ah PRO Lithium LiFePO4 Deep Cycle Rechargeable Battery | Bluetooth & Self Heating | 7000 Life Cycles & 10-Year Lifespan | Perfect for RV, Solar, Marine, Overland, Off-Grid: Batteries - Amazon FREE DELIVERY possible on eligible purchases Our PRO LiFePO4 batteries undergo the most rigorous testing of all of our



12 YEAR WARRANTY ON ALL BATTERIES We know you take your passion seriously, and so do we! Our passion is helping anglers take their fishing to the next level, with cutting-edge lithium battery technology that won't break the bank or weigh you down.



The Tusk Lithium Pro battery is a high-power, compact battery designed for motorcycles, ATV's, and UTV's. These batteries feature high power lithium iron phosphate (LiFePO4) cell technology that is extremely lightweight (1/3 the weight of traditional lead/acid batteries). These performance batteries offer a long service life (twice that of



M3110-S 12.8V 110Ah Lithium Ion Engine start Battery This battery meets the Sept 19, 2022 Mercury specifications for a lithium-ion engine start battery. Compatible with all outboards and alternators 40% more energy than a typical Group 31 AGM battery! 12.8V 110Ah (1,410 Whr) 260 Reserve Minutes BCI Group 31 size, (13???)



This is the 36V 60Ah Trolling Battery kit we recommend for professional tournament anglers using 36V trolling motors. The kit consists of two M3130-36 lithium-ion batteries and one M1236 DC charger. At 55.7 lbs for the total kit, it is hard to believe that two batteries can do what three group 31 marine batteries* can. In a bass boat or flats boat where weight is a premium, ???



A Lithium Pros battery can accept current more rapidly than a typical lead-acid battery, which allows the batteries to often be recharged in as little as 10-15 minutes. For the over the road trucks, know you're going to need a special lithium charger. Lithium Pros supplied us with a special charger, Part Number 1008 for when the truck either



(13"L x 6.81" W x 8.43" T) Installation is a snap and you are ready to go with a Lithium Pros battery that is "strong all day long." NOTE: Effective 8/1/2016, M3140-36 batteries no longer ship with a 12V e-Start post. * Group 27 marine ???



A recent introduction that offers saltwater anglers an expanded choice in this product category is the Lithium Pros M3110-S 12V starting battery. Although the new M3110-S is listed a 31-Group marine battery, the tapered profile of these lithium-ion 31's frequently fit in the footprint of a 27-series battery tray. Such was the case when I



Using a lithium ion battery instead of a traditional lead battery in race cars increases handling ability. This change is likely to cause less physical fatigue for the rider over the duration of the race.



The 36V 30Ah Marine Trolling Battery is all you need to power a 36V trolling motor for hours at a time. The 36V 30Ah Marine Trolling Battery features 70 reserve minutes, making it equivalent to three Group 24 marine deep cycle lead acid batteries* or enough power for extended trolling in one area for over six hours.** Combine it with an on-board DC charger that ???



Pro-Guide Lithium // 31M100. With A Cycle Life Rated Up To 3000 Cycles @ 80% DOD, The Pro-Guide Lithium 31M100 Battery Is Your New Favorite Choice For Powering Your Boating & RV Adventures, Solar Storage, And More. When you need power the Pro-Guide Lithium 31M100 Battery is there to support you.



Tusk Lithium Pro Battery TLFP-7L - LiFePO4-12V 2Ah, 24 Wh, 140 CCA, Motorcycle, Dirt Bike, Dual Sport, ATV, UTV, Jet Ski, Riding Lawn Mower, Tractor, Scooter . Visit the TUSK Store. 4.5 4.5 out of 5 stars 53 ratings | Search this page . \$79.99 \$ 79. 99. FREE Returns . ???



Buy ExpertPower 12V 100Ah PRO Lithium LiFePO4 Deep Cycle Rechargeable Battery | Bluetooth & Self Heating | 7000 Life Cycles & 10-Year Lifespan | Perfect for RV, Solar, Marine, Overland, ???



Lithium Pros Marine Batteries; Refine by No filters applied. Browse by Brand, Price & more Hide Filters Show Filters Brand Lithium Pros (10) Price Update Other In Stock (10) Lithium Pros Marine Batteries. Lithium Pros Marine Batteries rely on the expertise of 20 years in the racing industry, to deliver the highest performance, ultra lightweight



AES PROFESSIONAL batteries: DLP-GC2-12V, DLP-GC2-24V, DLP-GC2-36V, DLP-GC2-48V. The 950-0034 is a Battery Discharge Indicator (BDI) that communicates with AES LiFePO 4 Mobile Industrial and AES PROFESSIONAL batteries presenting the battery's state of charge by incremental LED segments.



The Tusk Lithium Pro battery is a high-power, compact battery designed for motorcycles, ATV's, and UTV's. These batteries feature high power lithium iron phosphate (LiFePO₄) cell technology that is extremely lightweight (1/3 the weight of traditional lead/acid batteries) Product information .



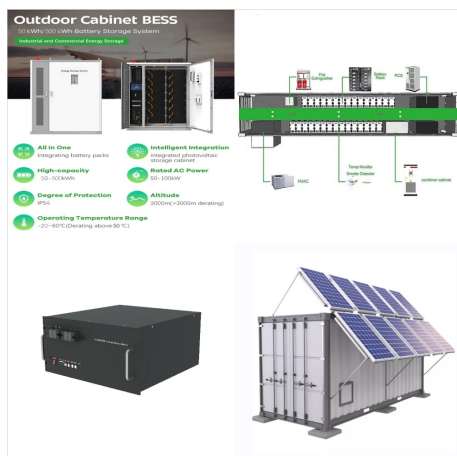
Lithium marine batteries power varying devices and electronic equipment onboard boats, including GPS systems, trolling motors, fish finders and more. LithiumPRO's LiFePO₄ deep-cycle battery is designed to be completely ???



Lithium Pro batteries offer 100% useable capacity ??? Unlike, your existing Lead-Acid battery, here you can USE all 100% of the published amp hour rating in a single discharge without damaging or sulphating your battery. Try this 5000 ???



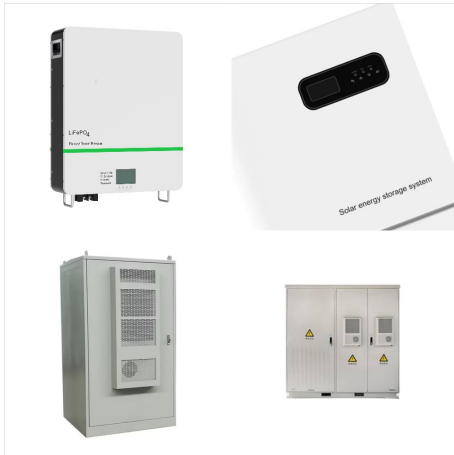
This is the 38.4V 50Ah Lithium Ion Trolling Battery Lithium Pros recommend for freshwater and saltwater tournament anglers using 36V trolling motors. At 32.2 lbs, it is hard to believe that ONE battery can do what three group 27 marine batteries can.



Power your adventures and elevate your efficiency with Pro-Guide Batteries, where cutting-edge technology meets unparalleled reliability???shop our collection today. Shop now. Pro-Guide Lithium 31M100-ST. \$999.99. At Just 26 Pounds, The PGL 31M100-ST Battery Is One Of The Lightest And Longest-Lasting Deep Cycle Batteries Available.



ZPRO Lithium batteries ensure you stay connected and powered up throughout the day. Don't settle for less when you can have the best! Upgrade your device's performance with our high-performance Pro batteries, designed to deliver extended power and reliability.



FISH MORE, WORRY LESS. Lithium battery technology has transformed the boating market across fresh and saltwater. Tracker Lithium batteries provide increased capacity and higher performance in a package that is lighter and lasts longer, requires less maintenance, and costs less over the product's lifetime than traditional marine batteries.



M3110 12V 110Ah Marine Starting Battery ??? The M3110 is a Lithium Ion Battery for the angler who will accept no compromises in a starting battery. This is the most capacity and cranking power that we can fit in a standard Group 31 case. (13.00" L x 6.81" W x 8.43" T) It features one of the most advanced internal battery management systems in the marine industry today.



M32215-S 12V 215Ah Marine Starting Battery - The M32215-S is a Lithium Iron Phosphate Battery for the pro angler who needs ONE battery to start and power multiple graphs too. This is comparable energy to three Group 31 AGM batteries. (12.88" L x 7.13" W x 10.50" T) Storing energy in a Lithium Ion battery is one thing.



Tusk Lithium Pro Battery TLFP-7L - LiFePO4-12V
2Ah, 24 Wh, 140 CCA, Motorcycle, Dirt Bike, Dual
Sport, ATV, UTV, Jet Ski, Riding Lawn Mower,
Tractor, Scooter . Visit the TUSK Store. 4.5 4.5 out
of 5 stars 53 ratings | ???