

Where can I buy a Lithonia Lighting battery?

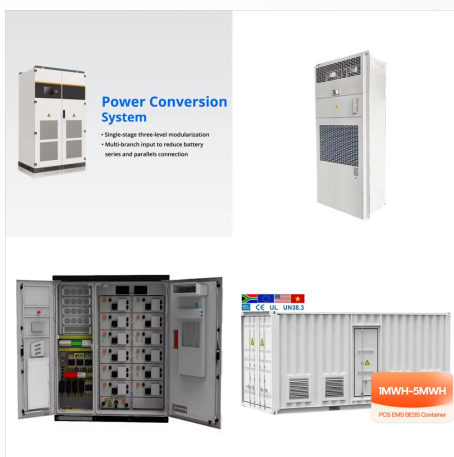
Shop Lithonia Lighting Sealed Lead Calcium (SLC) Emergency Lighting Battery Pack in the Emergency Lighting Battery Packs department at Lowe's.com. The ELB is your Lithonia Lighting emergency lighting replacement battery. Maintenance-free lead-acid (SLA) battery. 6V 4Ah.

What is a Lithonia Lighting replacement battery?

The Lithonia Lighting replacement battery is intended for use in emergency lighting. The most common reason for exit or emergency sign failure is a dead battery. It is important to choose a replacement battery with the same voltage and power capacity as your existing battery system. Please check your local laws before purchasing this product.

What are Lithonia Lighting emergency & exit solutions?

Lithonia Lighting LED Emergency & Exit solutions include exit signs and combos, lighting units and remotes, ballasts and drivers, emergency AC inverters, and our Contractor Select light fixtures.



(5 Pack) This rechargeable nickel cadmium battery is specifically designed for Emergency and Exit Lights Product Features: Voltage: 1.2 Volt Capacity: 900 mAh Battery Chemistry: Ni-CD Part Number: 129BHJC2P Emergency Light Replacement Battery This battery works for the following models: AA900mAh 1.2V OSA268 OSA-268 Ni-CD AA 900mAh 1.2v ???

LITHUANIA EMERGENCY BATTERY PACK FOR HOME



RELIABLE AND DURABLE EMERGENCY LIGHTING: Dual LED Lamp emergency light with injection-molded, flame-retardant, high-impact, thermoplastic housing and snap-fit design components; Provides 90 minutes of emergency ???



Sealed, maintenance-free nickel-cadmium battery delivers the 90-minute capacity to emergency lamps. 3.6 volts and 900mAh capacity. Compatible with Lithonia Lighting emergency lighting units ELM2 LED and EU2C



Upgrade to your light with this Lithonia Lighting Emergency Replacement Battery. Replacement battery for select quantum, titan and indura emergency units. #1 Home Improvement Retailer. Credit Services. Select store..

LITHUANIA EMERGENCY BATTERY PACK FOR HOME



The ELB is your Lithonia Lighting emergency lighting replacement battery. Maintenance-free lead-acid (SLA) battery. 6V 4Ah. It is important for you to consult your fixture warranty for specific battery replacement guidelines.



RELIABLE AND DURABLE EMERGENCY LIGHTING: Dual LED Lamp emergency light with injection-molded, flame-retardant, high-impact, thermoplastic housing and snap-fit design components; Provides 90 minutes of emergency power during power outages

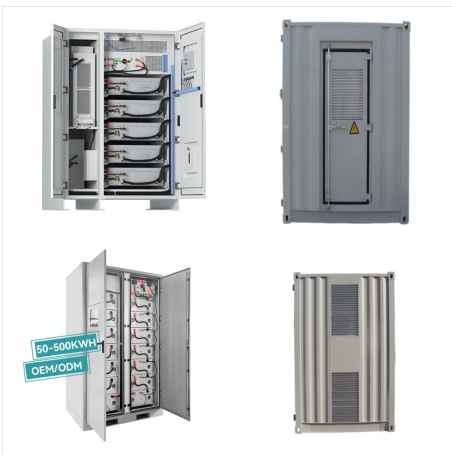


3.2%? Sealed, maintenance-free nickel-cadmium battery delivers the 90-minute capacity to emergency lamps. 3.6 volts and 900mAh capacity. Compatible with Lithonia Lighting emergency lighting units ELM2 LED and EU2C

LITHUANIA EMERGENCY BATTERY PACK FOR HOME



(5-Pack) 3.6V 900mAh Ni-CD AA Exit Sign
Emergency Light Battery, Replacement Battery for
Exitronix 10010037, Max Power B2-0031
MH468886, Unitech LEDR-1 6200RP, Dantona
CUSTOM-318 OSA230, Lowes 253799 4.4 out of 5
stars 53



Lithonia Lighting ELB 06042 Battery Emergency
Replacement Batter, 6 Volts, 250 Watts, Black &
EU2C M6 Emergency Light with 2 LED Lamps,
Square, Ivory White - Amazon Tools & Home
Improvement Best Sellers Deals ???



Vandal-Resistant Polycarbonate Wall Pack. The
TWPX LED wall pack family features premium
polycarbonate lenses that are designed to make
these luminaires tough enough to take real world
abuse in applications such as parks and recreation
areas, locker rooms, entry ways or any other
high-traffic public spaces.

LITHUANIA EMERGENCY BATTERY PACK FOR HOME



LITHONIA Power Sentry Electronic Emergency Battery Backup, 300 Lumen, 120V/277V, Single 16W to 32W T8, 20W to 40W T12, 18W to 40W PL/FT (2G11 base) lamps. DISCONTINUED BY MANUFACTURER - Recommended Replacement (confirm for your application) Click here: [Iota I-32 Emergency Ballast. PowerSentry 300 Lumen Emergency Battery Pack](#)



Offer a plush and luxurious look to any space in your home or office with this Lithonia Lighting ELM2L Quantum White Light Integrated LED Emergency Light. Contractor Select ELM 120/277-Volt Integrated LED White Emergency ???

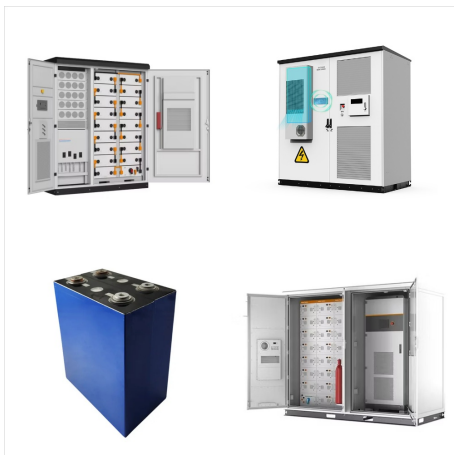


Amazon : GLESOURCE (4 Pack ELB1P201NB Emergency Light Battery for Lithonia ELB1P201N2 ELB1P2901N ELB1P201N ANIC1493 Lithonia 1009S00-MZ ELB0320 Grainger 4WT20 OSA212 NIC1169 EBE-33 NiCad 1200mAh : ???

LITHUANIA EMERGENCY BATTERY PACK FOR HOME



Coonyard (2-Pack) 1.2V 1200mAh Ni-CD Battery
Pack Replacement for Lithonia ELB3500 Exit Sign
Emergency Light NEAFAZA ELB1P201N2
ELB1P201N Emergency Light Battery 1.2V
1200mAh Ni-CD Compatible with Lithonia
ELB1P201NB ELB1P2901N ANIC1493
1009S00-MZ ELB0320 Grainger 4WT20 OSA212
NIC1169 EBE-33 (2 Pack)



The Lithonia Lighting replacement battery is intended for use in emergency lighting. The most common reason for exit or emergency sign failure is a dead battery. It is important to choose a replacement battery with the same voltage and power capacity as your existing battery system.

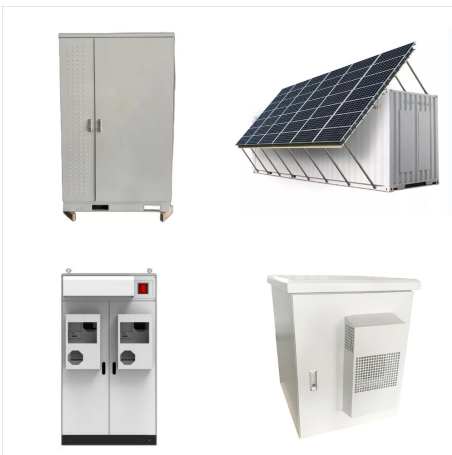


3.2%? The ELB is your Lithonia Lighting emergency lighting replacement battery. Maintenance-free lead-acid (SLA) battery. 6V 4Ah. It is important for you to consult your fixture warranty for specific battery ???

LITHUANIA EMERGENCY BATTERY PACK FOR HOME



Shop Portable Power Station,600W Solar Mobile Lithium Battery Pack for Home Emergency Power with 600W/230V AC Lithium Ions Outlets, Outdoor RV Camping,USB PD65W Type-C QC3.0 DC12V Output with LED Light online at best prices at desertcart - the best international shopping platform in Lithuania. FREE Delivery Across Lithuania. EASY Returns



The Lithonia Lighting replacement battery is intended for use in emergency lighting. The most common reason for exit or emergency sign failure is a dead battery. It is important to choose a ???



Ciata 6 Pack Emergency Exit Lights with Battery Backup - High Visibility Fire Exit Signs - Universal Emergency Lights for Business or Residential - Rechargeable Exit Sign Battery Included \$154.99 \$ 154 . 99