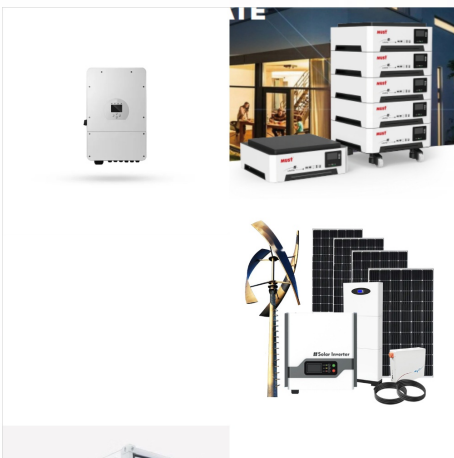


Today, most electric cars run on some variant of a lithium-ion battery. Lithium is the third-lightest element in the periodic table and has a reactive outer electron, making its ions great energy



Up to 5.6% cash back. Best in class 11 year warranty. Deep cycle, marine, golf cart, automotive, car, and dual purpose LiFePO4 batteries. Plus 12 volt, 24 volt, 36 volt, and 48 volt lithium batteries for trolling motors, RVs, motorhomes, off a?|



A LifePO4 lithium car battery that can discharge about 100Ah will weigh around 11 - 13kg, while an AGM or lead-acid will weigh around 28Kg. Almost 1/3 the weight. A LifePO4 battery recharges faster due to its lower internal resistance and makes it a far better option for camping.



Associate Professor Xin Li and his team have designed a stable, lithium-metal battery that can be charged and discharged at least 10,000 times. Eliza Grinnell/Harvard SEAS "Our research shows that the solid-state battery could be fundamentally different from the commercial liquid electrolyte lithium-ion battery," said Li. "By studying



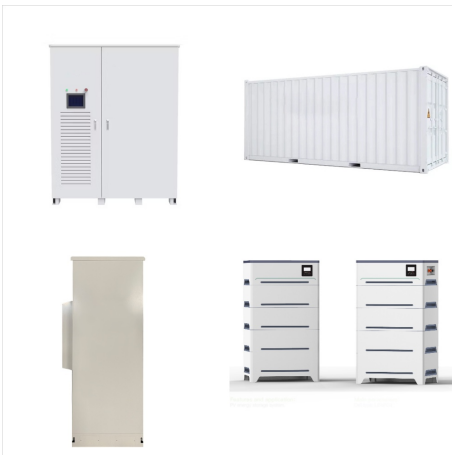
Antigravity H6/Group-48 Lithium Car Battery. Rated 5.00 out of 5 \$ 719.99 a?? \$ 1,049.99. Select options. Add to wishlist. Compare. Quick View. Antigravity ATZ7 RE-START Lithium Battery \$ 144.99. Add to cart. Add to wishlist. Compare. Quick View. Antigravity Battery Tracker (LITHIUM) \$ a?|



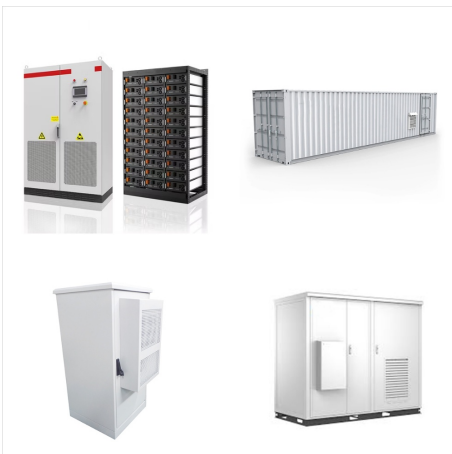
H6/Group-48 16V Battery Lightweight Lithium Race Car Battery with Wireless Remote Built-In Jump Starting! The first Intelligent Lithium-Ion Automotive Battery that won't leave you stranded! Antigravity Batteries has changed the game again with our latest Lithium-Ion Car Batteries. The newest RE-START line of batteries offers built-in WIRELESS



In recent years, some automakers have started to make lithium-ion starter batteries available in their vehicles, but the batteries have largely been limited to expensive optional offerings in high-end sports cars from companies like Porsche and McLaren. Antigravity wants to change that.



Electric cars are powered by a lithium-ion battery pack, the same type of battery that powers common electronic devices like laptops and cellphones. However, the units that power EVs are



This specific Club Car lithium golf cart battery kit offered by Pete's Golf Carts is based on the safest form of lithium battery technology available: Lithium Iron Phosphate (LiFePO4). Features: Top Quality and Reliability: Initially, Eco Battery utilizes top quality materials and processes which produce top-tier batteries. Because of this



This means that you will have to buy a battery that comes with a charge converter that takes the output from the alternator and converts it to use in the lithium battery. Ready to Make the Switch to a Lithium Car Battery? As you can see from the information above there are a ton of reasons why a lithium car battery is a smart move.



Having said that, the majority of modern electric cars use this lithium-ion battery technology, and it has proven to be very durable. A lithium-ion NMC battery will very likely outlive the car itself, and (in average daily use) will lose around 10- to 15% of its performance every 10 years and 100,000 miles. Lithium-iron phosphate LFP . Pros



The materials used in lithium iron phosphate batteries offer low resistance, making them inherently safe and highly stable. The thermal runaway threshold is about 518 degrees Fahrenheit, making LFP batteries one of the safest lithium battery options, even when fully charged.. Drawbacks: There are a few drawbacks to LFP batteries.



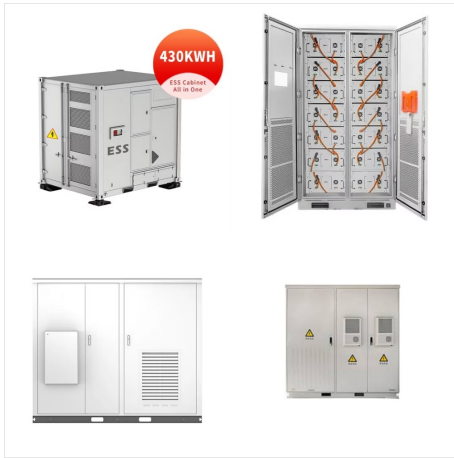
Lithium-ion batteries use lithium ions to create an electrical potential between the positive and negative sides of the battery, known as the electrodes. A thin layer of insulating material called a "separator" sits between the two electrodes and allows the lithium ions to pass through while blocking the electrons.



H5/Group 47 OEM Automotive Case size (directly replace stock battery); LxWxH: 9.5 x 7 x 7.5 inches.; Amp Hour Options: 24 Ah, or 40 Ah.; High Power: 24Ah=1000CA, 40Ah=1500 Cranking Amps.; Exclusive RE-START Technology: Wireless Jump-Starting built-in; just press the button on your Keyfob remote.; Complete Battery Management System built-in.; Ultra Lightweight: Drop a?]



A lithium-ion or Li-ion battery is a type of rechargeable battery that uses the reversible intercalation of Li + ions into electronically conducting solids to store energy. In comparison with other commercial rechargeable batteries, Li-ion batteries are characterized by higher specific energy, higher energy density, higher energy efficiency, a longer cycle life, and a longer a?]



Lightweight H7/Group-94R Lithium Car Battery with Built-In Wireless Jump Starting! The first battery that won't leave you stranded! Introducing Antigravity Batteries" lithium-ion automotive batteries. This battery is part of their RE-START line of car batteries that feature a built-in jump-starting, wirelessly activated with the included keyfob



Electric cars are powered by a lithium-ion battery pack, the same type of battery that powers common electronic devices like laptops and cellphones. If an electric car battery fails or falls



Lightweight H5/Group-47 Lithium Car Battery with Built-In Wireless Jump Starting! The first battery that won't leave you stranded! Introducing Antigravity Batteries" lithium-ion automotive batteries. This battery is part of their RE-START line of car batteries that feature a built-in jump-starting, wirelessly activated with the included keyfob



Why I Don't Recommend Lithium Car Batteries? Yet. When it comes to finding the best lithium car battery, you shouldn't take a shortcut. The consequences of a failure could result in thermal runaway. That's more prevalent in a lithium car battery and something that would be devastating (not to mention dangerous).



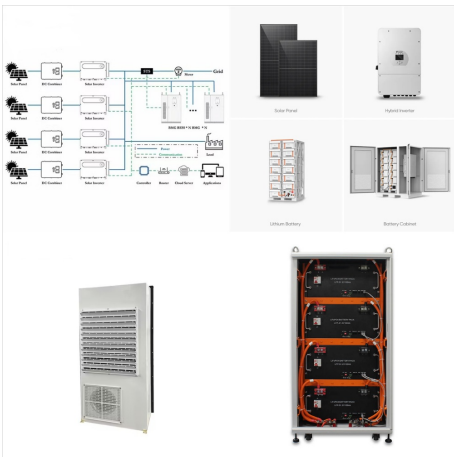
The Army Is Testing a Flow Battery According to the U.S. Geological Survey (USGS), Earth plays host to some 88 million tonnes of lithium. Of that number, only one-quarter is economically viable to



T6/L2 OEM Automotive Case size (directly replace stock battery).; LxWxH: 10.75 x 7 x 6.8 inches.; Amp Hour Options: 40 Ah, or 60 Ah.; High Power: 40Ah=1500CA, 60Ah=1800 Cranking Amps.; Exclusive RE-START Technology: Wireless Jump-Starting built-in; just press the button on your Keyfob remote.; Complete Battery Management System built-in.; Ultra Lightweight: Drop a?]



Today, most electric cars run on some variant of a lithium-ion battery. Lithium is the third-lightest element in the periodic table and has a reactive outer electron, making its ions great energy



A battery is made up of an anode, cathode, separator, electrolyte, and two current collectors (positive and negative). The anode and cathode store the lithium. The electrolyte carries positively charged lithium ions from the anode to the cathode and a?|



Group 35/Q85 OEM Automotive Case size (directly replace stock battery).; LxWxH: 9 x 6.85 x 8.6 inches.; Amp Hours: 40 Ah.; High Power: 1500 Cranking Amps.; Exclusive RE-START Technology: Wireless Jump-Starting built-in; just press the button on your Keyfob remote.; Complete Battery Management System built-in.; Ultra Lightweight: Drop up to 40 lbs instantly! a?|