



All you need to know about the FF-MP-BBB-400 solar panel including rating, cost, efficiency, and warranty terms. Open navigation menu  
Monocrystalline solar cell technology for enhanced efficiency  
Warranty Specifications expand Solar Panel Aesthetics . expand Physical Characteristics



Cell 6 x 18 monocrystalline Q.ANTUM solar half cells Junction box 53-101 mm x 32-60 mm x 15-18 mm Protection class IP67, with bypass diodes  
Cable 4 mm<sup>2</sup> Solar cable; (+) ??? 1250 mm, (???)  
??? 1250 mm Connector St?ubli MC4, Hanwha Q CELLS HQC4; IP68 Mechanical Specification  
ASYMMETRIC Q.PEAK DUO M G11 30T 1134 mm  
980 mm 1692 mm 30 mm



co nt a ct@e n e rgypa l m . Solar Panel Guide .  
Speci???cation Data Sheet . Nominal Output  
(Pmpp) W 380 385 390 395 400 405 Open Circuit  
Voltage (Voc) V 47.80 48.00 48.18 48.37 48.55  
48.73 Short Circuit Current (Isc) Encapsulant : EVA  
| Back Sheet : Weatherproof film Frame Clear  
anodized aluminum alloy type 6063

# M SOLAR 400 SPEC SHEET

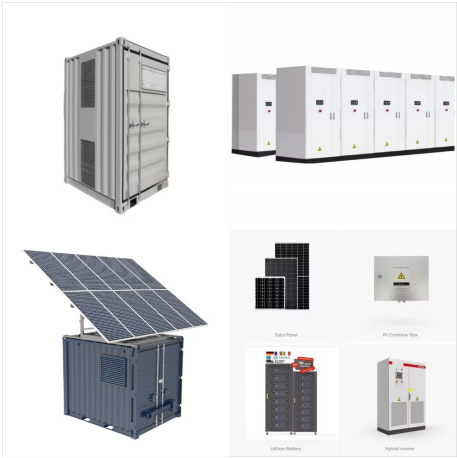
## PORTUGAL



STC: Irradiance 1000W/m2 AM=1.5 NOCT:  
 Irradiance 800W/m2 AM=1.5 \* Power measurement  
 tolerance: ? 3% Wind Speed 1m/s Cell Temperature  
 25?C Ambient Temperature 20?C-40???~+85???  
 1500VDC (IEC) 040505 10 20 3015 25 35 45 0 2 4  
 6 8 10 12 100 50 150 200 250 300 350 400 ( Two  
 pallets=One stack ) 3.2mm, Anti-Reflection Coating,  
 High Transmission



The wattage for this tends to range between 250  
 and 400 for the top-rated systems. Higher values  
 mean more efficient systems. The mechanical data  
 section of the solar panel spec sheet is the one that  
 is the easiest to ???



STC(Standard Testing Conditions): Irradiance  
 1000W/m2, AM 1.5, Cell Temperature 25?C NOCT  
 (Nominal Operation Cell Temperature): Irradiance  
 800W/m2, Ambient Temperature 20?C, Spectra at  
 AM1.5, Wind at 1m/s PS400M8GF-18/VH  
 PS400M8GFH-18/VH 20.48 STC 400 13.11 30.51  
 13.78 36.63 NOCT 301 10.58 28.50 11.12 34.73  
 PS405M8GF-18/VH 20.74 STC 405 13.

# M SOLAR 400 SPEC SHEET

## PORTUGAL



AM 1.5, ambient temperature 20°C, wind speed 1 m/s. ENGINEERING DRAWING (mm)  
CS1U-405MS / I-V CURVES 5°C 25°C 45°C 65°C  
1000 W/m<sup>2</sup> 800 W/m<sup>2</sup> 600 W/m<sup>2</sup> 400 W/m<sup>2</sup> 200 W/m<sup>2</sup> A A V 12 11 10 9 8 7 6 5 4 3 2 1 0 5 10 15 20 25 30 35 40 45 50 55 V 3 5 10 15 20 25 30 35 40 45 50 55 MECHANICAL DATA Specification Data Cell Type Mono-crystalline



CS1Y-390 | 395 | 400 | 405MS MORE POWER  
Aesthetically pleasing design blends of irradiance  
of 1000 W/m<sup>2</sup>, spectrum AM 1.5 and cell  
temperature of 25°C. ELECTRICAL DATA | NMOT\*  
CS1Y 390MS 395MS 400MS 405MS wind speed 1  
m/s\_ The specifications and key features contained  
in this datasheet may deviate slightly from our  
actual products due to



For example this panel is rated at 400 W and will operate anywhere from 400 W to 420 W (or 5% higher than 400) under STC. With a -0% tolerance rating, this panel operates at, or above, 400 W. In a side-by-side comparison of power tolerance, the Maxeon3 panel performed as well as the more expensive Maxeon 5 panel.

# M SOLAR 400 SPEC SHEET PORTUGAL



Shop ZNShine Solar ZXM7-SH108-400-M 400Watt  
108 1/2 Cell Black Backsheet Monocrystalline  
30mm Black Frame Solar Panel online or call us,  
Solarflexion, at 800-942-2424 for your solar needs.  
Specifications. Full data sheet can be found in the  
Document(s) tab above. Mechanical Data: Solar  
Cells Mono PERC Cells orientation



HC+ SILFABSOLAR RELIABLE ENERGY. DIRECT  
FROM THE SOURCE. Designed to outperform.  
Dependable, durable, high-performance solar  
panels engineered for North American homeowners.  
ELECTRICAL SPECIFICATIONS 400 Test  
Conditions STC NOCT Module Power (Pmax) Wp  
400 298 Maximum power voltage (Vpmax) V 36.05  
33.50 Maximum ???

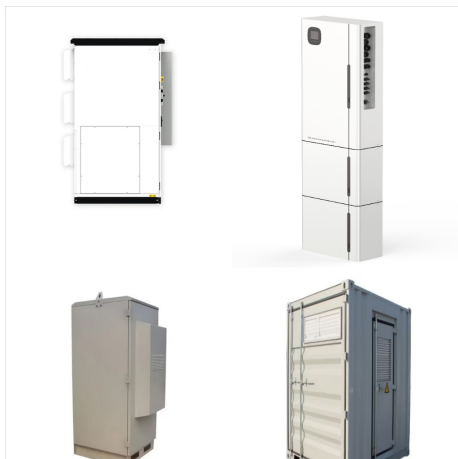


08BB has solar cells half the size of those installed  
in conventional panels. The main benefits are  
decreased power loss, improved longevity and  
better low-light performance. As a result, the panel  
achieves an ???



# M SOLAR 400 SPEC SHEET

## PORTUGAL



Module Efficiency: Up to 22.8%.; Nominal Power (DC): 420W ??? 440W. Output Power (AC): 369 VA ??? 384 VA. Temperature Coefficient: -0.29%/°C; Operating Temperature: -40°F to 185°F; Residential SunPower M Series solar panels are specially designed for the SunPower Equinox System and feature 66 Maxeon Gen 6 solar cells to deliver a nominal DC power output of 420 ???



M E R TOP BRAND PV MODULES USA 2022 ?? See data sheet on rear for further information. ?? APT test conditions according to IEC???TS 62804-1:2015, method A (???1500??V, 96??h) The ideal solution for: Rooftop arrays on residential buildings Qcells is the ???rst solar module manufacturer to pass the most comprehensive quality programme in the



CS3N-400|405|410|415|420|425MS 400 W ~ 425 W CANADIAN SOLAR INC. is committed to providing high quality solar products, solar system solutions and services to custo-mers around the world. Canadian Solar was recognized as the No. 1 module supplier for quality and performance/price ratio in the IHS Module Customer Insight Survey, and is a leading

# M SOLAR 400 SPEC SHEET PORTUGAL



mSolar > 400 Watt All Black Mono Perc Solar Panel  
- 35mm Frame - Pallet Quantity - 31 Solar Panels.  
Black 35mm Frame, Black Backsheet, 108  
Half-Cell, 10 BusBar Mono Solar Panel M Solar  
modules are guaranteed to retain at ???



CS6R-380|385|390|395|400|405MS CSI Solar Co.,  
Ltd. is committed to providing high quality solar  
photovoltaic modules, solar energy and battery  
storage solutions to customers. The company was  
recognized as the No. 1 module supplier for quality  
and performance/price ratio in the IHS Module  
Customer Insight Survey.



The spec sheets of all solar panels include a  
warning that they may be hazardous when exposed  
to sunlight. Spec sheets are a very important part of  
a solar panel. Any solar panel without a spec sheet  
or with typographical errors, illegible lettering or  
bubbles in the spec sheet and spec sheets that  
have peeled off point to a substandard

# M SOLAR 400 SPEC SHEET

## PORTUGAL



Qcells is the first solar module manufacturer to pass the most comprehensive quality programme in the industry: The Mechanical Specification Qcells pursues minimiing paper output in consideration of the global environment. 390 395 400 405 410 W 390 39 400 40 410 A 13.1 13. 13.8 13.2 13.76 [V] 3.02 3.04 3.0 3.10 3.13



-400-800 Spec Sheet - Free download as PDF File (.pdf), Text File (.txt) or read online for free. This document summarizes and compares three solar well pump kits from RPS Solar Pumps: the RPS 200, RPS 400/400V+, and RPS ???



CS3N-380|385|390|395|400MS 380 W ~ 400 W Canadian Solar (USA) Inc. is committed to providing high quality solar products, solar system solutions and services to customers around the world. Canadian Solar was recognized as the No. 1 module supplier for quality and performance/price ratio in the IHS Module Customer Insight Survey, and is a