

Can a lithium battery be attached to a mailpiece?

Except for mailpieces containing button cell batteries properly installed in the equipment they are intended to operate, mailpieces containing mailable lithium metal or lithium-ion batteries must be rigid, sealed, and of adequate size, so the lithium battery mark can be affixed to the address side without the mark being folded.

Can I ship lithium batteries via the USPS?

Either of these solutions will help you continue to ship lithium battery devices via the USPS in full compliance with the new rules. For a more complete explanation of the Postal Service's rules for shipping lithium batteries, please visit our USPS Publication 52 page.

How do I ship a lithium battery?

USPS has official instructions and guidelines for shipping batteries. ShipSaving helps you to highlight the following information: All packages containing lithium metal or lithium-ion batteries that can be mailed must be of sufficient size, sealed, and rigid. This ensures that the lithium battery mark can be affixed to the address without folding.

Where can I mail lithium batteries?

Customers can mail packages containing lithium batteries installed in electronic devices to their local Post Office for many international destinations, and Army (APO), Fleet (FPO), and Diplomatic Post Office (DPO) locations. For the current regulations regarding the mailability of lithium batteries, please visit your local Post Office.

Can I ship lithium batteries overseas?

For shipping lithium batteries with USPS overseas, you can ship a maximum of 4 cells or 2 batteries that are installed in the new or certified refurbished equipment or device it operates, without any lithium battery markings. However, individual batteries are prohibited from USPS international shipping.

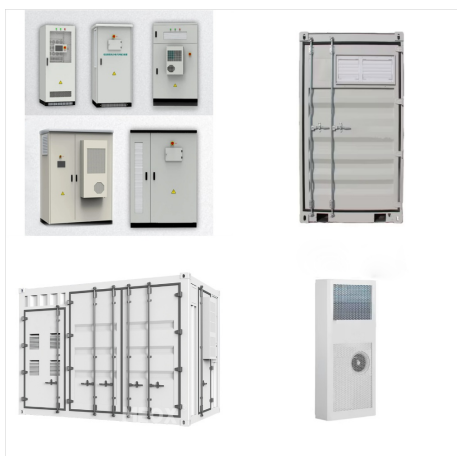
Are lithium ion batteries mailable?

Except as provided above, individual lithium metal (or lithium alloy) and lithium-ion (or lithium polymer) batteries (without equipment) are mailable in limited quantities via surface transportation only, provided the batteries are in the originally sealed packaging, and packaged and marked as described in 349.221 and 349.222, as applicable.



CHECK FOR LITHIUM BATTERIES

INTERNATIONAL and APO/FPO/DPO MAILERS If your international parcel contains lithium batteries, use this guide to ensure the batteries are permitted in the mail. Lithium batteries must be installed in the small consumer electronic equipment they operate. Electric bicycle Laptop with external battery Battery not Small



Packages containing lithium batteries must be properly stored to endure changing environmental factors. Improper storage or defective batteries can short circuit, overheat, or start a fire. Hence the "dangerous goods" category. And also why you should take the time to safely store, package, and label any mail containing lithium batteries.



??? Revision to the lithium battery mark. A telephone number is no longer required on the lithium battery mark. Lithium battery marks with a phone number may continue to be applied until December 31, 2026. ??? Packing Instructions 965 and 968 ??? removal of Section II ??? Packing Instructions 966 and 969 ??? clarification on protection against



Lithium cells and batteries power countless items that support everyday life from portable computers, cordless tools, mobile telephones, watches, to wheelchairs and motor vehicles. The manufacturer of your electronic may also offer a mail-in program. Should you utilize a mail-in program, you must comply with all USPS (for USPS mail



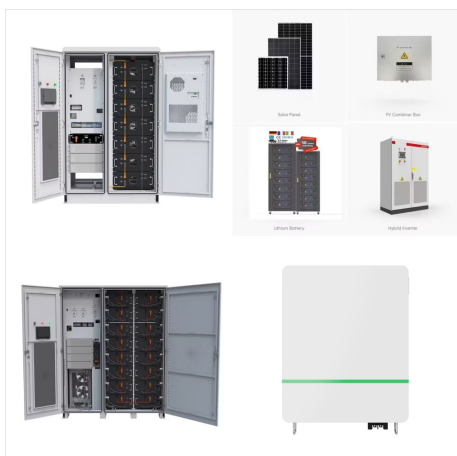
lithium battery shipping class in order to better understand these complex regulations and meet DOT/ICAO/IATA/IMDG/ USPS requirements. FedEx Ground offers an economical lithium battery shipping on-line course to help you meet this requirement for ground shipping. Please contact the Dangerous Goods hotline at 800-GOFEDEX, Option 81 for more



You mail all items at your own risk. Among other exceptions and limitations that may apply, we make no coverage for damages available for shipments containing electronic goods that you ship in any packaging other than: If the electronic goods have lithium batteries,



The following additional restrictions apply to the mailing of lithium-ion cells or batteries shipped with (but not installed in) the device or equipment being mailed: For lithium-ion cells and batteries with a watt-hour rating of not more than 2.7 Wh, no mailpiece may exceed 2.5 kilograms (5.5 pounds). There is no maximum number of cells or



You cannot mail lithium-ion batteries to Canada or Mexico. And you cannot mail any type of battery that is damaged or leaking. Shipping batteries internationally can be a complicated process. There are several restrictions that must be followed in order to ensure safe transport. In addition, each country has its own regulations for shipping



These batteries may be difficult to distinguish from common alkaline battery sizes, but can also have specialized shapes (e.g., button cells or coin batteries) for specific equipment, such as some types of cameras: look for the word "lithium" on the battery to help identify them.



Lithium polymer batteries: These lightweight, flexible batteries are starting to replace traditional lithium-ion packs in some applications. They have a lower risk of fire and explosion, which could potentially ease shipping restrictions in the future.

Smart battery management systems: Some high-end toys now include smart BMS chips that monitor the ???



LITHIUM BATTERY SHIPPING GUIDE . JANUARY 1, 2022 . The following guide provides a summary of marking, labeling and paperwork requirements for shipping lithium batteries via domestic US ground (49 CFR 171-180 in effect 1-Jan-2022), international air (2022 IATA DGR, 63rd Edition) and international



You can only send a maximum of 2 lithium batteries or 4 lithium cells, regardless of whether they are lithium metal or lithium-ion batteries. What products we cannot ship with lithium batteries Generally, we are unable to ship E-bikes containing lithium ion batteries as they are over 100 wh in size, we are not accredited to ship this size of



PHMSA and the U.S. Postal Service collaborated on a set of safety guidelines for those wanting to mail lithium batteries. Persons wishing to ship lithium batteries and electronic devices containing lithium batteries should be aware that certain requirements must be met to ensure safety. Both agencies are responsible for enforcing the safety



4 ??? Lithium metal (LiM) ??? are generally non-rechargeable (primary, one-time use). ??? have a longer life than standard alkaline batteries ??? are commonly used in hearing aids, wristwatches, smoke detectors, cameras, key fobs, children's toys, etc. LITHIUM BATTERY TYPES There are many different chemistries of lithium cells and batteries, but for transportation purposes, all lithium ???



USPS Standards for Domestic Shipments Containing Lithium Batteries. Each cell cannot contain more than 1 gram of lithium; Each battery cannot contain more than 2 grams of lithium; All packages must contain a complete return address; For non-installed batteries, your package must have a DOT-approved lithium battery mark (UN3090)



USPS Packaging Instruction 9E Lithium Metal and Lithium-ion Cells and Batteries ??? International and APO/FPO/DPO. Lithium metal (non-rechargeable) cells and batteries and lithium-ion (rechargeable) cells and batteries are mailable in limited quantities internationally or to and from APO, FPO, or DPO locations only when they are properly installed in the equipment they operate.



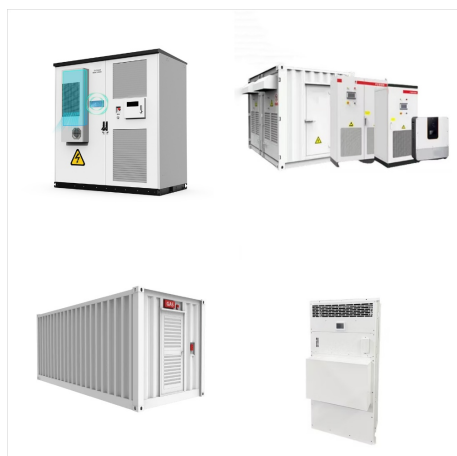
Safely recycle end-of-life lithium-ion batteries and devices with Redwood Materials. Find convenient drop-off locations and community events across the U.S. to reduce waste and support sustainable battery recycling. Direct mail ???



Americans across the United States use the U.S. Mail daily and rely upon the Postal Service to ship numerous types of items for personal and business purposes. lithium batteries, safety matches, perfume, and cosmetic products such as nail polish and nail polish remover. Although some of these materials are allowed to travel through the mail



You may only mail lithium batteries: Meeting the conditions outlined in Schedule 2, Special Provision 34 of the Transportation of Dangerous Goods Regulations. Subject to the restrictions set out in the table below ; Please note: You aren't allowed to ship lithium batteries to any destination outside of Canada and the U.S.



What do the Lithium Battery Marks and Labels Look Like? The lithium battery mark is required as specified in the DGR. The border of the mark must have red diagonal hatchings with a minimum width of 5mm. The symbol (group of batteries, one damaged and emitting flame, above the UN number for lithium ion or lithium metal batteries or cells) must



Recycle your batteries safely & responsibly with the country's largest, most reliable battery recycling program. Learn more today. [home](#); [about](#); [contact](#); [find drop-off location](#); [store](#); [cart](#); [bol wizard](#); 1-877-723-1297 gro.elcyser2llac@ecivresremotsuc. United States (English) Canada (English) Canada (French) Recycling 101.



The U.S. Postal Service has announced new final rules, effective immediately, that significantly impact the shipping of lithium batteries and other hazardous materials by mail.. USPS cites "a consistent and alarming rise in incidents involving mailed packages of both lithium batteries and other hazmat, including ??? unlabeled or improperly labeled air-ineligible hazmat ???



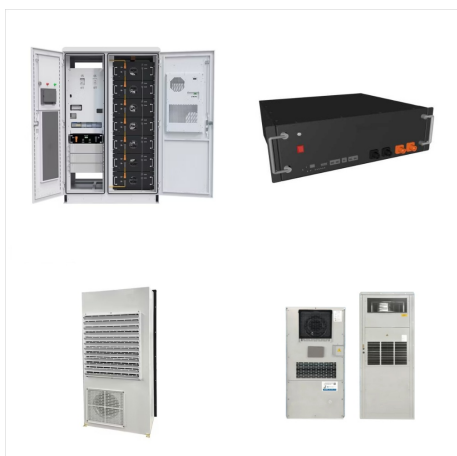
? 3. International Restrictions: International battery shipments have more stringent regulations due to safety concerns. USPS prohibits shipping lithium batteries internationally via mail. However, you can send other non-spillable and spillable batteries internationally, subject to specific packaging requirements and restrictions imposed by the destination country.



What do the Lithium Battery Marks and Labels Look Like? The lithium battery mark is required as specified in the DGR. The border of the mark must have red diagonal hatchings with a minimum width of 5mm. The symbol ???



Safely recycle end-of-life lithium-ion batteries and devices with Redwood Materials. Find convenient drop-off locations and community events across the U.S. to reduce waste and support sustainable battery recycling. Direct mail Ship your batteries directly to us. Redwood Consumer Program 675 Innovation Way ATTN: Consumer Recycling Program



Lithium battery shipping with USPS may seem challenging, but with the right information, it can be a smooth process. This guide offers essential information for shipping batteries, packaging, prohibited items, labeling, and ???



Human Toxicity from Damage and Deterioration. Before lithium-ion batteries even reach landfills, they already pose a toxic threat. When damaged, these rechargeable batteries can release fine particles???known as PM10 and PM2.5???into the air. These tiny particles, less than 10 and 2.5 microns in size, are especially dangerous because they carry metals like arsenic, ???



To assist shippers of lithium batteries, including equipment with installed lithium batteries, a requirement came into force with effect January 1, 2019 that manufacturers and subsequent distributors of lithium cells and batteries must make available a test summary that provides evidence that the cell or battery type has met the requirements of