



L-Impjant Waste-to-Energy se jkun qed jittratta skart li ma jistax ji??i ri??iklat f"ener??ija ??adra biex b"hekk ma jispi????ax fil-landfill. Dan se jkun qed ibiddel il-mod ta" kif ji??i mmani????jat l-iskart f"Malta u se jkun qed jikkumplimenta l-impjanti tal-immani????jar tal-iskart l-o??ra li se jiffurmaw parti mill-kumpless ECOHIVE.



The waste-to-energy facility will be processing 192,000 tonnes of non-recyclable waste per year, which waste will be converted into green energy. This plant, together with a new Organic Processing Plant, Material Recovery Facility, Skip Management Facility, and Thermal Treatment Facility will be allowing Malta to move to a fully circular



The Waste-to-Energy facility will be treating non-recyclable waste which will be diverted away from landfill and converted into green energy. This will be a game changer in Malta's waste management potential and will complement the rest of the green waste management plants that will form part of the ECOHIVE complex.



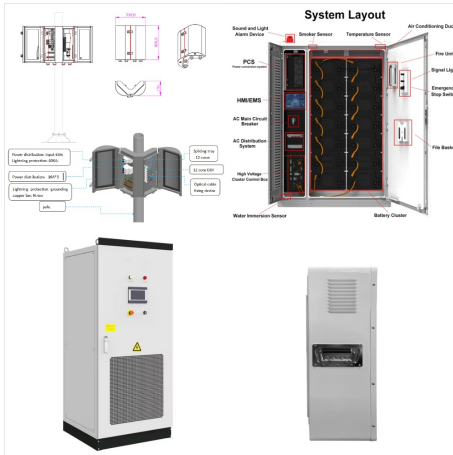
Malta a step closer to move away from decades of predominant reliance on landfilling to green energy generation FCCMA-Hitachi JV Malta, Urbaser-Terna and Consortium Suez - Tecnimont - Termomeccanica are the three shortlisted bidders of the Pre-Qualification Questionnaire for WasteServ's Waste to Energy Plant. As soon as the appeals period is ???



Once the ECOHIVE is set up, Malta will be reducing its dependency on fossil fuels for its electricity demand by some 7 percent, bolstering its green energy generation. Therefore, Malta's approach to implementing waste-to-energy ???



Following the announcement made on 13 October 2023 that the procurement process for Malta's waste-to-energy facility had reached its final stage, with a recommended bidder selected, WasteServ can confirm that the standstill period has been broken by Hitachi-Zosen Inova AG - Terna S.A., who has filed an appeal. WasteServ Malta Ltd ECOHIVE



Il-proġess tal-akkwist għall-fażi li jsegwi  
tal-waste-to-energy la jidher li huwa stadju importanti ieżer-  
hekk kif tleat konsorzji issottomettu l-aqwa offerti  
finali tagħhom biex jibnu u joperaw l-impjant għall-  
20 sena. Hitachi Zosen Inova AG - Terna S.A.,  
FCC Medioambiente Internacional S.L.U, u Paprec  
Energies International-BBL Malta issottomettu l-



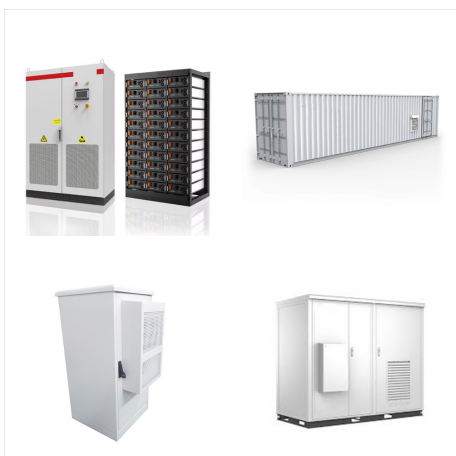
The waste-to-energy plant is part of the €500 million capital investment in the ECOHIVE project. It will allow Malta to move away from its reliance on landfilling and towards a circular economy



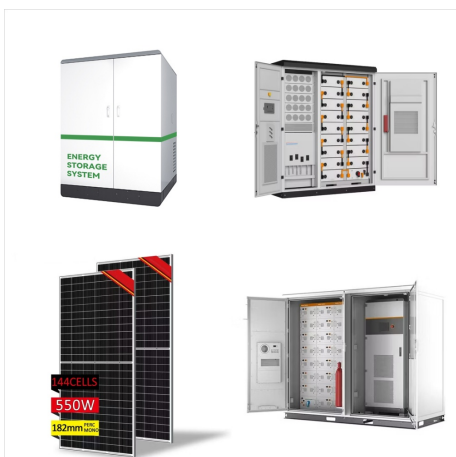
Għall-isem ta' Ta' Wajra landfills are the two engineered landfills within the ECOHIVE Complex. Ta' Wajra landfill was Malta's first engineered landfill developed for the disposal of Municipal Solid Waste in a safe and sustainable way. It was mainly used between 2004 and 2006 and currently there is over 40,000m<sup>3</sup> of space left, to be



The Waste-to-Energy facility will be treating non-recyclable waste which will be diverted away from landfill and converted into green energy. This will be a game changer in Malta's waste management potential and will complement the rest of the green waste management plants that will form part of the ECOHIVE complex.



The facility will be converting waste that cannot be recycled into energy and will form part of the ECOHIVE complex at Magħtab. The incinerator is necessary to enable Malta to divert waste away from landfill ???



WasteServ Tippiubblika Prior-Information Notice għall-Proġedura Kompetittiva bin-Negożjar tal-Waste-to-Energy f'Malta Fażilit? dida tal-iskart fil-Kumpless ECOHIVE fin-Naxxar Fażilit? dida li se tkun qed tinbena fil-Kumpless ECOHIVE fin-Naxxar se tkun qed tgħidin biex jiġi massimizzat il-valur tal-iskart goff.





The procurement process for Malta's waste-to-energy facility is in its final stage with a recommended bidder selected to build and operate the plant for 20 years being announced. The conclusion of the standstill period will then be followed by contract signature and the commencement of concrete works for which a full development permit has



Besides making the plant efficient, this also contributes towards Malta's commitment to reduce greenhouse gas emissions and to generate renewable energy resources. Furthermore, the Thermal Treatment Facility operates in line with the Industrial Emissions (Integrated Pollution Prevention and Control) Regulations ( S.L. 549.77 )



A fixed automated or semi-automated waste transportation system is planned to be installed at the ECOHIVE Complex (PMC WSM 161/2020). With the ongoing improvements and projects within the ECOHIVE Complex, in line with WasteServ's mission to lead Malta's waste management facilities and services towards a circular economy approach, internal waste ???



Work on the waste-to-energy project is also progressing as the plant's excavation works were completed last year," concluded the WasteServ CEO. Recent Posts. 2023 was WasteServ's best year in two decades. Monday, 08 January 2024. WasteServ Malta Ltd ECOHIVE Complex, Tul il-Kosta, Naxxar NXR9030



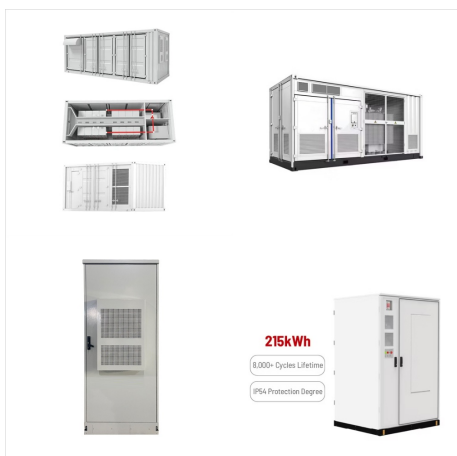
The plant will treat non-recyclable waste with the aim of diverting it away from the landfill, combusting it to generate energy. It is part of a ???500 million ECOHIVE strategy, which aims to push Malta away from its ???



This means that we are continually evaluating our operations to create value from previously wasted energy and materials. WasteServ will soon be home to Malta's largest ever investment in the waste management sector, ECOHIVE, that will drive Malta towards a circular economy. WasteServ is determined to act in the most sustainable and resource



WasteServ published the pre-qualification questionnaire (PQQ) in relation to Malta's Waste-to-Energy project. Interested candidates are requested to provide information on their financial and economic standing, experience, and competence for the completion of this multimillion-euro contract for the design, construction and operation of the facility.



Situated within the ECOHIVE Complex, there is also the Mechanical and Biological Treatment Plant. Treatment Plant. With an investment of ???50 million, part financed by the European Union under the Cohesion Fund, the Malta North Mechanical and Biological Treatment Plant was set up in February 2016. Monitor energy consumption with the



The facility will be converting waste that cannot be recycled into energy and will form part of the ECOHIVE complex at Mag??tab. The incinerator is necessary to enable Malta to divert waste away from landfill disposal and contribute towards national compliance with EU targets with respect to recycling and landfill reduction.



The successful tenderer will be awarded a contract for the Design, Build and Operation (DBO) of a Waste to Energy (WtE) facility in Malta intended to substantially divert waste away from landfill disposal and contribute towards Malta's national compliance with EU targets with respect to recycling and landfill reduction.



Therefore, this plant will convert wastes that cannot be recycled into precious resources adding an impressive 4.5% as green energy to Malta's total energy demand. The waste management credentials of the plant are strong by themselves, however they need to be seen as part of a holistic strategy that is being implemented at the ECOHIVE Complex.



The waste-to-energy plant is part of a comprehensive strategy to improve the waste sector in Malta through which all waste streams will be used to their maximum potential. In addition to the waste-to-energy plant, other plants such as an organic processing plant with agricultural compost production facilities and a fully-fledged material

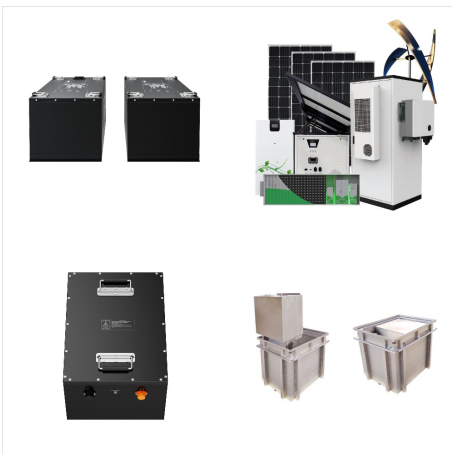




The French consortium Paprec, in partnership with Maltese firm Bonnici Bros, has just secured a substantial €600 million contract for the construction and operation of a waste-to-energy plant in Magħtab. Paprec Energies International-BBL Malta, the entity responsible for the project, has been designated to oversee the plant's operations for a period of 20 years.



ECOHIVE IS THE LARGEST EVER INVESTMENT IN THE WASTE MANAGEMENT SECTOR THAT WILL DRIVE MALTA TOWARDS A CIRCULAR ECONOMY. Similar to the dual role of bees both as pollinators for flowers, fruits and vegetables, and as honey producers, this project will process waste in the most sustainable and resource-efficient way possible while also turning it into energy.



Welcome to the ECOHIVE Academy, where curiosity meets sustainability! Step into a world where children become the key players of a cleaner, greener future. At the new ECOHIVE Academy, we believe that educating young minds is the key to unlocking innovative solutions for a better environment. Our Academy is an invitation to all to explore and learn.

