

How much power does a mango power E have?

A standalone MANGO POWER E has a massive battery capacity: 3.5kWh. With a portable, wheeled luggage-like design that's easy to take a whole lot of energy while camping, on road trips, or keep in your garage as backup for your home power supply as a safeguard against short, unpredictable power outages or brown-outs. What Can It Power?

What is a mango power E portable power station?

The Mango Power E portable power station defies size, portability, and power limitations. It presents a compelling substitute to solar additions or RV battery replacements, and offers numerous advantages. There are huge advantages for full-time RVers. However, part-time RVers can also find handy uses for emergency power around the home too.

Does mango power E work with other solar panels?

The Mango Power E has a standard MC4 solar connector that is compatible with their 200W Mango "Solar Move" folding panel. Other portable solar panels can work, but fitting combinations must be correct. The user tested different combinations and was able to connect a few 200W panels to test the Power E's solar functionality.

How does mango power E work?

Here's how it works. The Mango Power E is the ultimate home power station, providing 3kW of battery and AC output power. The superior cell technology and the possibility of adding extra batteries justify the higher price tag.

Can a mango power E be used as a power generator?

The Mango Power E can turn into a high-capacity power generator with the help of solar arrays and an additional battery pack. The 150V DC input for charging isn't the highest on the market but should cover many combinations of solar panels and give decent charge times.

Does mango power E have an extra battery?

Take your home's backup power to the next level with an extra battery attached to your MANGO POWER E. The expanded MANGO POWER E delivers twice the capacity, a total of 7kWh, to see your home and your family through severe blackouts.



The Mango Power E has a standard MC4 solar connector that is compatible with their 200W Mango "Solar Move" folding panel. Other portable solar panels can work, but fitting combinations must be correct. The user tested different combinations and was able to connect a few 200W panels to test the Power E's solar functionality.



How Does the Federal Solar Tax Credit Work?
When you purchase a solar photovoltaic (PV) system during the tax year, you are eligible for a Federal Solar Tax Credit that you can claim on your federal income taxes for a percentage of the cost of the system. The ITC will now provide 30% for systems installed in tax years 2022 through 2032.



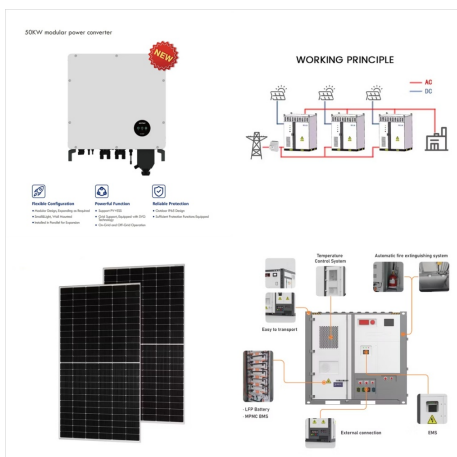
Excited to share a comprehensive review of the Mango Power E by Android Police. Renowned for its robust build and exceptional capabilities, the Mango Power E stands out with its impressive 3.5KWh of LiFePO4 cells made ???



In terms of charging ports, the Mango Power E takes a slight edge with 16 vs. 15 in the DELTA Pro - however, the DELTA Pro has one more (5) of the much-desired AC ports than the Mango Power E (4). Where the Mango Power E shines is in its significantly higher solar input.



The solar input voltage range for Mango Power E is 60V-150V, with a maximum input power of 2000W. Please connect a minimum of two solar panels in series, and up to three solar panels are supported. Parallel cables are included in the accessories list. ???



For those looking to expand their power supply, the Mango Power E can also seamlessly shift into a 7.06kWh capacity with a 3000W output with the addition of a Mango Power E Battery. Taking it a step further for the heavy-duty appliances crowd, the Mango Power E answers your call for efficient 240V output.



Mango Power E Home Backup and Portable Power Station Introducing the Mango Power E Home Backup and Portable Power Station ??? your ultimate solution for reliable power, whether at home or on the go. Mango Power E: Capacity: 3533Wh: Solar Charging Input: Max 2000W (60V-150V) AC Output: 4 x 20A, 3000W total: EV Charging Spot: Adapter needed



You can also use Mango Power's portable solar panels to charge the Mango Power E. So if I really needed a charge, I could always just unplug everything and take the solar panels and Mango Power E outside during the ???



Jack Laurent, electronics reviewer of Techradar is highly satisfied with our portable power station: "Mango Power brings best-in-class battery technology, ease of use, and versatility to its new E model." TechRadar spends hours testing every product or service they review, so you can be sure you're buying the best. Man



Excited to share a comprehensive review of the Mango Power E by Android Police. Renowned for its robust build and exceptional capabilities, the Mango Power E stands out with its impressive 3.5KWh of LiFePO4 cells made by CATL for EVs, delivering a solid 3000W of AC power. With 16 total outputs, it has rightfully earn



Mango Power E is a perfect example of harvesting solar energy to combat power outages during extreme weather or grid failure. Solar Energy as an Infinite Resource The sun will continue to be the main life-support and energy source for life on Earth for over four billion years.



You can also use Mango Power's portable solar panels to charge the Mango Power E. So if I really needed a charge, I could always just unplug everything and take the solar panels and Mango Power E outside during the day for a charge. Since it's about a 100 pounds, lugging the Mano Power E outside is a bit inconvenient and, because it has a large



User Experience Mango Power M, an innovative whole-home backup system, offers an impressive 20 kWh of battery capacity and a peak output of 24 kW. It also provides the option to add DC or AC-coupled solar systems, connect to the grid, or use a generator.



What is the Mango Power E? The Mango Power E is a dependable portable energy backup designed to supply consistent power during blackouts or whenever mobile power is required. It comes with a substantial capacity of 3.5kWh, which can be further increased through the addition of. Can the Mango Power E be charged using solar panels? Yes, the Mango



Ultimately you could grow an initial Mango Power E power station into a whole home power supply that automatically switches over to battery power when the grid goes down, with 14kWh capacity, 6000W AC output and solar recharging.



A standalone MANGO POWER E has a massive battery capacity: 3.5kWh. With a portable, wheeled luggage-like design that's easy to take a whole lot of energy while camping, on road trips, or keep in your garage as backup for your home power supply as a safeguard against short, unpredictable power outages or brown-outs. What Can It Power?



MANGO POWER M, Whole-Home Backup Energy System. Smart, Reliable Solar System with Easy Installation. Seamless and Integrated Renewable Energy for Your Entire Home. Enjoy a better life with your new dependable, advanced, and easy-to-use solar energy storage system



October 17, New York // Mango Power, the up and coming challenger brand in the domestic energy storage industry, known for its user-centric product design and premium quality portable battery cells, launches today its latest product, the Mango Power E, available for purchase on Mango Power E ??? A top-grade, 5-year Warranty ???



We're excited to announce that Solar Builder Magazine has included the Mango Power M Energy Storage System and Mango Power E Portable Power Station in its prestigious 2024 Energy Storage Buyer's Guide. ???



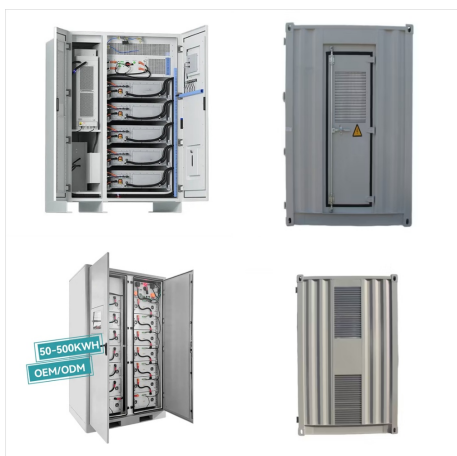
Mango Power E: mPanel Pro: Solar Panel 200W(18V) E battery: mSocket: Solar Panel 200W(36V) Mango Power Union: mSocket Pro: Solar Panel 200W(72V) 30A Fast Charging Cable: Solar Parallel Connection Cable *Table updated ???



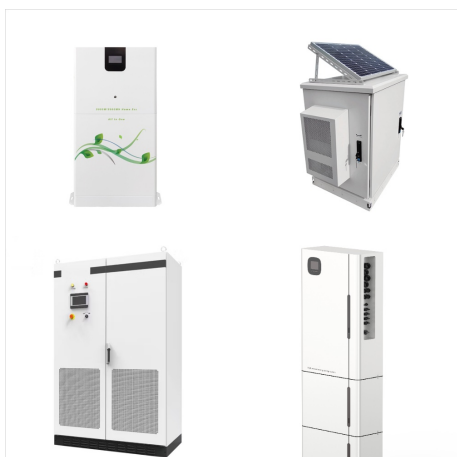
Charge it at home or go greener by hooking it up to some solar panels for cleaner charging. It powers up in 5 different ways ??? or in any combination of ways ??? at a blazing rate, going from 0-80% charged in just 60 minutes. To reach a complete, full charge the MANGO POWER E needs just 1.5 hours when plugged into an AC wall outlet.



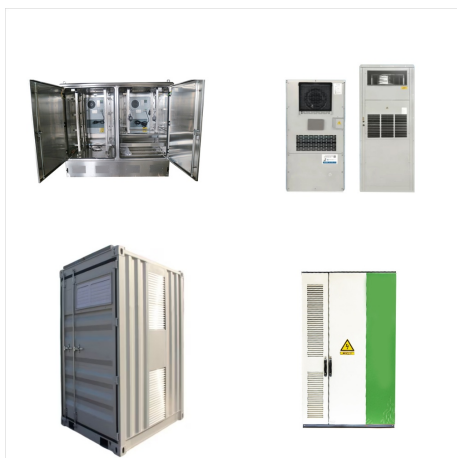
Mango Power E: 3.5kWh Capacity | 3kW Output | SAVE \$300. A standalone Mango Power E has a massive battery capacity: 3.5kWh. With a portable, wheeled luggage-like design that's easy to take a whole lot of energy ???



Additionally, connecting your Mango Power E to two 200W (36V) Mango Power solar panels gives you an unprecedented off-grid power supply. The advanced Mango Power Solar Panels are also built with ETFE Solar Cell Lamination that is higher than most conventional solar panels and features magnetic pads for convenient transportation.



Highlights: Use this cable to connect your Mango Power E to an AC power source for fast recharging. Up to 30A. Length: 1.5m In the Box Fast Charging Cable x1 *Note: This product is exclusively for the Mango Power E portable power station; only available for sale in the contiguous United States.



The Mango Power E supports maximum 2000W solar power input. Can I run a 240V device on the 120V US version? Yes. You need 2 Mango Power E units and one accessory mSocket Pro. Connect the Mango Power E units to the mSocket Pro ???



Mango Power E Portable Power Station- Solar Generator Kit. \$3,899.00 \$5,448.00. [Learn More.](#)
Mango Power E Portable Power Station-240V Power Kit. \$5,499.00 \$8,799.00. [Learn More.](#)
MANGO POWER M Whole-Home Backup Energy System. From \$19,999.00. [Learn More.](#) Mango Power mPanel Pro \$749.00 \$



Mango Power E is a high-end, portable micro-grid power station that users can take on the go, allowing them to power their outdoor excursions, camping trips, and any other outdoor activity. The 3.5 kWh battery and 3kW output is able to ???



We're excited to announce that Solar Builder Magazine has included the Mango Power M Energy Storage System and Mango Power E Portable Power Station in its prestigious 2024 Energy Storage Buyer's Guide. This recognition underscores Mango Power's commitment to innovation and excellence in the renewable energy sector. The