



The RB100-HP is a high-performance lithium-ion battery that can start motors, generators and other high-amp-draw devices, and also power accessories and peripherals. It is the first lithium battery to meet Mercury's engine specifications and has six battery terminals for more flexibility.



This is a Dual Purpose Cranking / Deep Cycle Lithium Marine Cranking Battery Comparable to 900 cranking amps This battery can be used as a starter battery for 25hp to 300hp, Yamaha, Mercury, Suzuki and Evinrude Motors Proprietary Battery Management Systems (BMS) with power terminal cut-off and recovery Built in cold weather protection ??? Does not take a charge if ???



The enhanced battery is the first lithium-ion starting battery to be evaluated and approved for use with select Mercury outboards. Menomonee Falls, Wis. (January 25, 2023) ??? RELiON(R) Battery, a global leader in the ???

MARINE LITHIUM STARTING BATTERY



LiTime lithium marine starting battery offers 650 CCA and 810 MCA, supporting crank up max.135 HP fuel powered marine outboard motor. Please consider both the horsepower and the CCA to confirm whether this battery is suitable for your engine. Born for Marine:



Along with the lithium AMPS range they also supply battery-to-battery chargers, enabling the vehicle's alternator to rapidly re-charge the batteries. The two units performed remarkably well in the 100A/60A discharge test, delivering 119Ah and 77Ah respectively, both 20% above their rated capacities.



N32215-S 12.8V 215Ah Lithium Ion Starting Battery
This battery meets the Sept 19, 2022 Mercury specifications for a lithium-ion engine start battery.
Compatible with all outboards and alternators
NMEA 2000 connectivity 12.8V 215Ah ???

MARINE LITHIUM STARTING BATTERY



Best Marine Battery for Starting and Electronics: 12V 140Ah Dual Purpose Marine Battery can help extend the lifespan of the battery. Lithium marine batteries can last up to 5-10 years and they are maintenance-free. While lithium marine batteries have a higher upfront cost compared to lead-acid batteries, their long-term value far outweighs

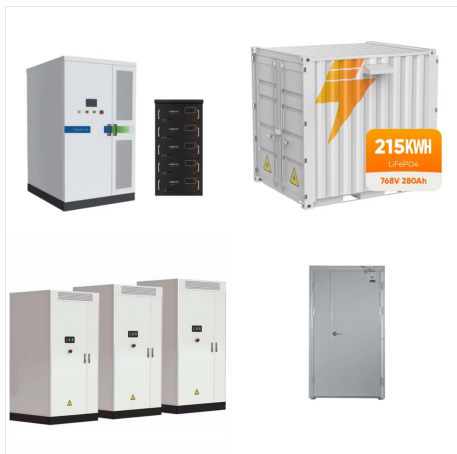


Lithium automotive and dual purpose batteries for starting cars, boats, outboards, RVs, vans and trucks. Marine Starting Batteries; Motorcycle Batteries; Overland 4X4 Batteries; Powersports Batteries; 12V 24V 36V 48V and 72V Lithium Battery Chargers; 24 Volt Lithium Batteries; 36 Volt Lithium Batteries;



Boats with one battery bank that does double-duty for house applications and engine starting. Battery Chemistries. At West Marine, you can choose from among four different battery chemistries: Flooded lead acid, gel, AGM (Absorbed Glass Mat) and Lithium Iron Phosphate. Compared to the roughly 500 discharge/charge cycles of a typical Group

MARINE LITHIUM STARTING BATTERY



M32215-S 12.8V 215Ah Lithium Ion Engine start Battery This battery meets the Sept 19, 2022 Mercury specifications for a lithium-ion engine start battery. Compatible with all outboards and alternators Replace three group 31 AGM batteries with this ONE battery! 12.8V 215Ah (2,750 Whr) 510 Reserve Minutes BCI Group GC12



12V 75AH Deep Cycle & Starting Marine Lithium Ion Battery - Group Size 24 This 12V 75AH Marine Lithium Ion Battery is commonly used for yachts, sailboats, catamarans, and other maritime applications requiring large capacity and deep discharge lithium batteries. Connect multiple batteries in parallel to increase capacity or in series to increase



M32215-S 12V 215Ah Marine Starting Battery is a Lithium Ion battery for the angler who will accept no compromises in a starting battery. Storing en View full details Original price \$2,999 Original price \$2,999 - Original price \$2,999 Original price \$2,999

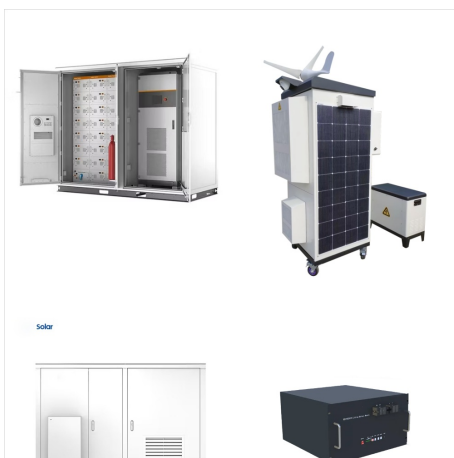
MARINE LITHIUM STARTING BATTERY



M32215-S 12.8V 215Ah Lithium Ion Engine start Battery This battery meets the Sept 19, 2022 Mercury specifications for a lithium-ion engine start battery. Compatible with all outboards and alternators Replace three group 31 AGM ???



Power Your Aquatic Adventures. Cruisers, racers and anglers want to spend as much time on the water as possible. Long-lasting RELiON lithium iron phosphate (LiFePO4) batteries fit all types of watercraft and deliver the dependable power for everything you need, from punching your holeshot in competition to running your A/C at the dock.



Two Main Types of Lithium Marine Batteries. Although continuing research has led to the development of six different types of lithium batteries, there is currently a clear winner when choosing a new marine lithium battery. Lithium iron phosphate (LiFePO4) batteries have a longer life cycle than standard lithium-ion.

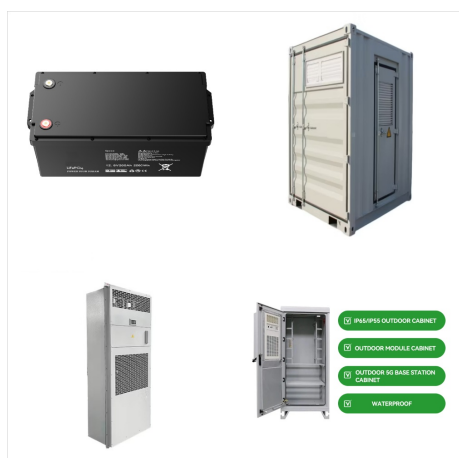
MARINE LITHIUM STARTING BATTERY



A 12V 150Ah dual purpose Group 31 marine battery is perfect for boats that need starting & deep cycle power. Abyss provides you with a dedicated battery. Skip to content. 1-855-719-1727 Free Ground Shipping and Returns info@abyssbattery 12-Volt Lithium Starting Batteries



Explore a wide selection of quality outdoor gear at Bass Pro Shops, the trusted source for Tracker Lithium Super High Output Lithium Marine Starting Battery . With our low price guarantee, get the best brands and latest gear at unbeatable everyday prices.



N3110-S 12.8V 110Ah Lithium Ion Starting Battery
This battery meets the Sept 19, 2022 Mercury specifications for a lithium-ion engine start battery. Compatible with all outboards and alternators
NMEA 2000 connectivity 12.8V 110Ah (1,410 Whr)
260 Reserve Minutes BCI Group 31 size, (13???L x 6.81??? W x 8.43??? T) 32 lbs N311

MARINE LITHIUM STARTING BATTERY



The best lithium car batteries for starting cars, trucks and boats. #PowerYourPassion with 1,000 cold cranking amps of Dakota Lithium power. 15% Off ??? Code: SeasonEndSale ??? Exclusions Apply, Valid 10/28 ??? 11/30 ARGO Marine(R) Batteries; Battery Collection. Certifications & Quality; Powerbox Solar Generators; Recycling Lithium Batteries



BLA Marine Performance Lithium is a premium range of batteries consisting of the highest quality Lithium Iron Phosphate (LiFePO₄) composition. LiFePO₄ has been selected for the BLA range due to its convenient cell voltage, high energy density, cycle life and most importantly due to it being one of the safest Lithium technologies available.



Buy LiTime 12V 20Ah Marine Starting Lithium Battery, Low-Temp Protection LiFePO₄ Battery, Built-in 20A BMS, 4000-15000 Cycles, Perfect for Home Energy, Yacht, Boat: Batteries - Amazon FREE DELIVERY possible on eligible purchases

MARINE LITHIUM STARTING BATTERY



(And keep in mind, you want the lightest battery weight possible in scenarios like this, so the advantages of lithium batteries are a must.) Like our other Ionic deep cycle lithium batteries, our trolling motor batteries last around 3,000-5,000 partial cycles.



Marine Starting Batteries. 200%. TWICE THE POWER OF TRADITIONAL BATTERIES. 1/2. HALF THE WEIGHT. 5X. CHARGES UP TO 5X FASTER. 8X. LASTS 8X AS LONG. 100%. SAFE & RELIABLE. (10-Amp Per Bank) 12V Onboard Lithium Battery Charger \$ 329 \$ 299 (26 reviews) Marine Battery Tray for Dakota Lithium Batteries \$ 129 \$ 99 (12 reviews) Victron ???

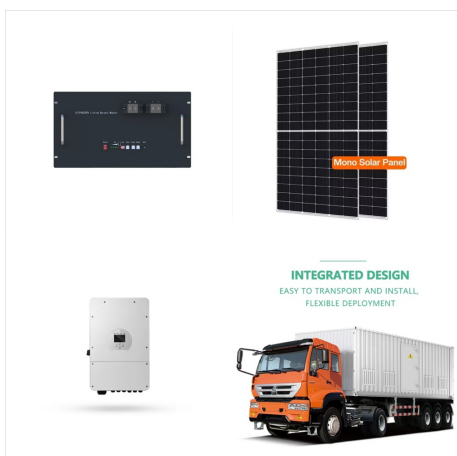


The RB100-HP is the first and only LFP approved for use as a marine starting battery. Courtesy ReLiOn. In the past, Boating has advised boaters to avoid the use of lithium-iron-phosphate (LFP) batteries in marine starting applications. But ReLiOn is rewriting that rule with its RB100-HP, the first and only LFP approved for use as a starting

MARINE LITHIUM STARTING BATTERY



lithium; marine; charger; starting; deep cycle; booster; kit; Use code "POWERUP" at checkout for 10% off of your first order! Unleash the Power of Pro-Guide Batteries. At Just 26 Pounds, The PGL 31M100-ST Battery Is One Of The Lightest And ???



With a peak CCA of 1500A, this multi-purpose marine lithium battery delivers plenty of power when you need to start motors, generators, and other high-load devices. Our deep-cycle battery can also be used in a parallel sequence to ensure long and steady power draw to power fish finders, GPS systems, audio systems, chill plates, and Seakeepers.

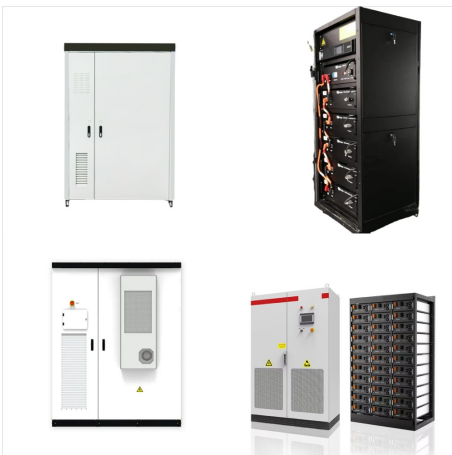


The answer to this question largely depends on the application. If you are looking to use a lithium battery as a cranking battery in your car, truck, RV or boat then the answer is a resounding no. If you are looking for a battery for your motorcycle, jet ski or ATV, then yes, an X2Power LiFePO4 battery is a suitable choice for a starting battery.

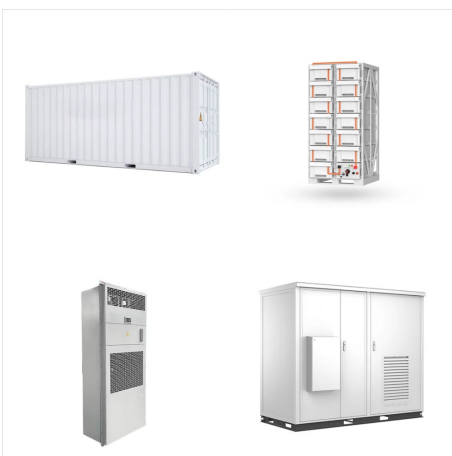
MARINE LITHIUM STARTING BATTERY



Our Lithium Marine Batteries are designed with a high energy density, enabling them to store more power in a compact space. This means you'll have access to incredible power in a smaller and lighter battery pack, freeing up valuable space on your vessel. Upgrade your marine experience with confidence and efficiency. Choose from our range of 12V



N32215-S 12.8V 215Ah Lithium Ion Starting Battery
This battery meets the Sept 19, 2022 Mercury specifications for a lithium-ion engine start battery. Compatible with all outboards and alternators
NMEA 2000 connectivity 12.8V 215Ah (2,752 Whr)
510 Reserve Minutes BCI Group GC12 size,
12.88"L x 7.13" W x 10.500" 46.6 lb



NOCO Genius GEN5X2, 2-Bank, 10A (5A/Bank)
Smart Marine Battery Charger, 12V Waterproof Onboard Boat Charger, Battery Maintainer and Desulfator for AGM, Lithium (LiFePO4) and Deep-Cycle Batteries \$139.95 \$ 139 . 95

MARINE LITHIUM STARTING BATTERY



The 12 Volt 40Ah Starter Lithium Battery brings you the best value available, with a 5 year limited warranty to give you peace of mind & free shipping. On sale now at LithiumHub. For offshore and center console boats, our 12V 40Ah battery is the ideal starting battery. Like all of our marine batteries, it charges five times faster than lead