



Who is Mitsubishi Power India Private Limited (MPW-IND)?

Namaskara! Mitsubishi Power India Private Limited ('MPW-IND') is a 100% subsidiary of Mitsubishi Heavy Industries, Ltd., Japan, ('MHI'). MHI Group is a key participant in decarbonizing electric power for a sustainable future throughout the world.

Who is Mitsubishi Heavy Industries (MHI)?

Mitsubishi Heavy Industries (MHI) has a long history of in house design & manufacture of reliable and efficient power system products like Gas Turbines, Steam Turbines, Boilers, Wind Turbines, Geothermal / Solar Power equipment' etc. Later in September 2011, it was established as Mitsubishi Power India Private Limited.

Who is Mitsubishi Power India?

Mitsubishi Power India headquartered at Bangalore is a company focusing mainly on marketing and EPC of AQCS (Air Quality Control System), Gas Turbine project, and WtE (Waste to Energy) projects in India.

Where can I find more information about Hitachi?

For more information, please visit the MHI website: Hitachi, Ltd. (TSE: 6501), headquartered in Tokyo, Japan, is a leading global electronics company with approximately 326,000 employees worldwide. The company's consolidated revenues for fiscal 2012 (ended March 31, 2013) totaled 9,041 billion yen (\$96.1 billion).

Who is MHI India?

The Engineering office was established in the year 2007 as MHI India Pvt. Ltd; a 100% owned subsidiary of Mitsubishi Heavy Industries (MHI), Japan for representing its Business in India.

When was Mitsubishi Power India Private Limited's Annual General Meeting (AGM) last held?

It is involved in Manufacture of special purpose machinery Mitsubishi Power India Private Limited's Annual General Meeting (AGM) was last held on N/A and as per records from Ministry of Corporate Affairs (MCA), its balance sheet was last filed on 31 March 2022.

MITSUBISHI HITACHI POWER SYSTEMS INDIA PRIVATE LIMITED



Mitsubishi Power India Private Limited having CIN U29292DL2011FTC225628 is 12 years, 9 months & 17 days old private company corporated on 28 September, 2011 and located at New Delhi, Delhi
MITSUBISHI HITACHI POWER SYSTEMS INDIA PRIVATE LIMITED: NA: COMPANY INFORMATION. CIN: U29292DL2011FTC225628: Company Status: Active: ???



Hitachi Works ; Takasago Machinery Works ; Kure Works ; MHI Power Control Systems Co., Ltd. Mitsubishi Heavy Industries Power Maintenance Service Co., Ltd. CECYLLS Co., Ltd. Europe, Near and Middle East, Africa India. Mitsubishi Power India Private Limited ; L& T-MHI Power Turbine Generators Private Ltd.



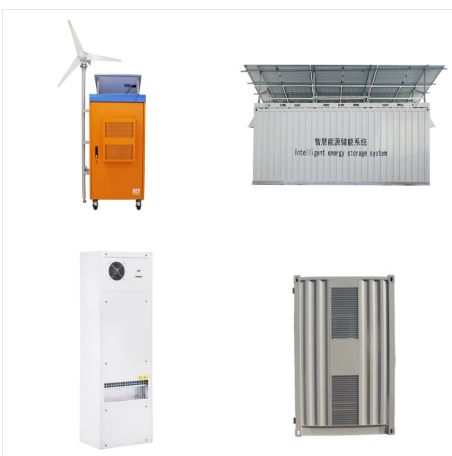
Mitsubishi Hitachi Power Systems India PVT: addresses with entrances on the map, reviews, photos, phone numbers, opening hours and directions to these places. English, Hindi, Tagalog, Japanese (Nihongo) Guide. Save. Send. Go. Mitsubishi Hitachi Power Systems India PVT Energy saving equipment. Mitsubishi Hitachi Power Systems India PVT LTD



MITSUBISHI HITACHI POWER SYSTEMS INDIA PRIVATE LIMITED's Corporate Identification Number (CIN) is U29292DL2011FTC225628. You can contact them by sending an email to mallikarjun_vishwanatham@mhps or visit them at their registered address 8B, 8TH FLOOR, LOTUS TOWERS, COMMUNITY CENTER, NEW FRIENDS COLONY NEW DELHI ???



Mitsubishi Power India Private Limited (MP IND) was awarded installation of wet limestone Flue-Gas Desulphurisation (FGD) systems at 2 x 600MW Mouda-II Coal Fired Power Plant from India's Public Sector Utility National Thermal Power Corporation (NTPC). This project aims to use cutting-edge FGD systems to reduce emissions of sulfur oxide (SO_x), helping to reduce air pollution ???

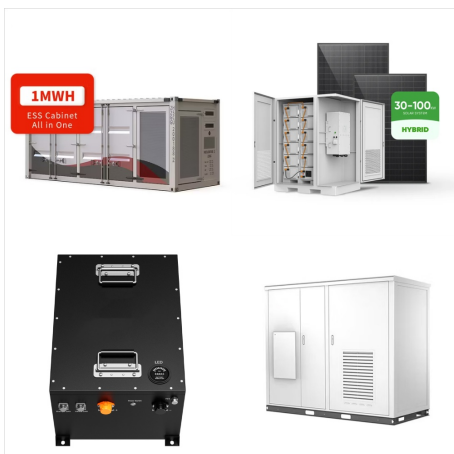


-26 Mitsubishi Power, Ltd. Middle East and North Africa [News] Mitsubishi Power Secures Landmark Gas Turbine and Services Order in Saudi Arabia. 2024-07-01 Mitsubishi Power, Ltd. Middle East and North Africa [Notice] Mitsubishi Power and Kuwait University Sign Memorandum of Understanding to Nurture Kuwait Engineering Talent ???

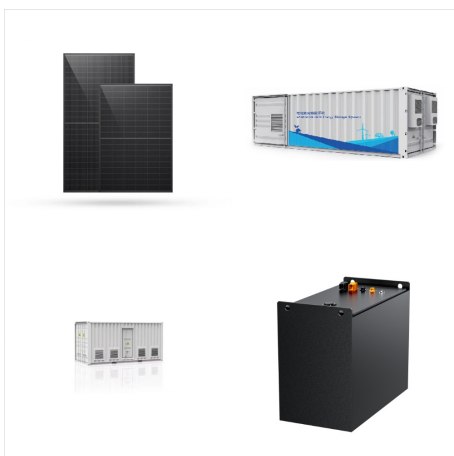
MITSUBISHI HITACHI POWER SYSTEMS INDIA PRIVATE LIMITED



Mitsubishi Power | 74,067 followers on LinkedIn.
Mitsubishi Power is a power solutions brand of Mitsubishi heavy industries, Ltd. (MHI). | Mitsubishi Power is a power solutions brand of Mitsubishi heavy industries, Ltd. (MHI). We are committed to working with every customer and community to build pathways to a decarbonized energy future that works for people as well as the planet.



Senior General Manager at Mitsubishi Hitachi Power systems India South Delhi, Delhi, India. 176 followers 163 connections See your mutual connections Mitsubishi Heavy Industries India, Pvt. Ltd - Assistant General Manager South Delhi. Connect Ramees Kalam BBA Graduate | Passionate about Data Analytics | Currently residing in Riyadh



Mitsubishi Power India Private Limited (MPIPL) is a leading Private Limited Foreign Company Incorporated In India incorporated in India on 28 September 2011 and has a history of 12 years and 11 months. Its registered office is in South West Delhi, Delhi, India. The Corporate was formerly known as Mitsubishi Power Systems India Private Limited.



The information provided may be disclosed to MHPS India affiliates and/or related third parties (such as MHPS India's customers, business partners, or group companies) to the extent that it is deemed necessary to achieve the intended purpose.



Farakka Stage-I, II & III. Mitsubishi Power India Private Limited (MPW-IND) received an order for installations of wet limestone Flue-Gas Desulphurisation (FGD) systems at Farakka Super Thermal Power Station, Stage-I, II & III (3x200MW + 2x500MW + 1x500MW) from India's Public Sector Utility National Thermal Power Corporation (NTPC).



Mitsubishi Power Completes Landmark 5,300MW Combined Cycle Power Plant Project in Thailand -- Final Eighth M701JAC Unit Begins Operation at Gulf Group and Mitsui & Co., Ltd., Joint Venture Plant -- 2024-08-26 [Press Release] ???



Who is Mitsubishi Hitachi Power Systems India Pvt. Mitsubishi Power India headquartered at Bangalore is a company focusing mainly on marketing and EPC of AQCS (Air Quality Control System), Gas Turbine project, and WtE (Waste to Energy) projects in India. Mitsubishi Power India is also actively involved in Gas Turbine based Combined Cycle Power Projects, Steam ???



-08 Mitsubishi Power Europe, Ltd. [Press Releases] Hybrid Solid Oxide Fuel Cell by Mitsubishi Power Europe commences commissioning at GWI in Essen, Germany. 2022-05-12 Mitsubishi Power Europe, Ltd. [Insights] Case studies Waste-to-Energy. Catalogue; Video; Event; Go to the top of this page. FOLLOW US:



Hitachi Systems India Pvt Ltd | 82,876 followers on LinkedIn. Transforming Businesses on the Tide of Digitization | Hitachi Systems India Pvt Ltd delivers innovative technology solutions to enable enterprises and government to realign and integrate their IT processes to be more responsive to their customer's needs. Build over 25 years, Hitachi Systems India Pvt Ltd ???



58 Group Companies of Mitsubishi Hitachi Power Systems to Be Launched-- 9 Companies in Japan and 49 Companies in Other Countries --Tokyo, January 28, 2014 -- Mitsubishi Heavy Industries, Ltd. (TSE:7011/"MHI") and Hitachi, Ltd. (TSE:6501/"Hitachi") today announced that Mitsubishi Hitachi Power Systems, Ltd. (MHPS), the new company to be ???

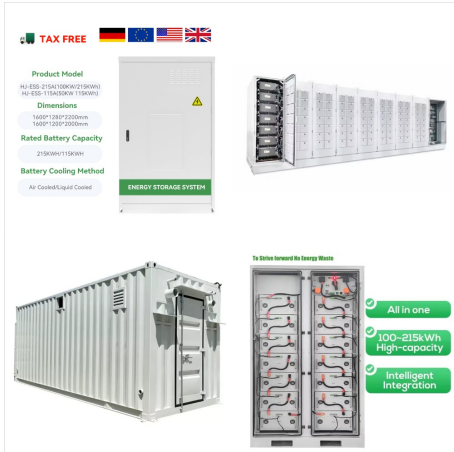


Job Details: About the Company: Mitsubishi Hitachi Power Systems (MHPS) began with the merging of the thermal power generation divisions of Mitsubishi Heavy Industries, Ltd. and Hitachi, Ltd. As a global-leading company in the field of thermal power generation systems and environmental technology, we can handle the entire production process from the development, ???



Mitsubishi Power in Singapore. artificial intelligence and machine learning to make energy systems smarter and more efficient. Mitsubishi Power Asia Pacific. Ltd. Address 150 Beach Road, #33-03/04, Gateway West, Singapore 189720 Phone: +65 62935352 Fax: +65 6293 5361

MITSUBISHI HITACHI POWER SYSTEMS INDIA PRIVATE LIMITED



Mitsubishi Hitachi Power Systems India Private Limited (29AAHCM4491K1ZV) - Karnataka GST Number details. GST number of Mitsubishi Hitachi Power Systems India Private Limited is 29AAHCM4491K1ZV. Mitsubishi Hitachi Power Systems India Private Limited is registered as a Private Limited Company. This business was registered under GST on 01/07/2017.



Senior Executive at Mitsubishi Hitachi Power Systems India Pvt. Ltd. ? Presently working as a Consultant in Marketing with Mitsubishi Hitachi Power Systems India Pvt. Ltd., New Delhi, after retirement. ? Experience: Mitsubishi Hitachi Power Systems India Pvt. Ltd. ? Education: Parippu High School; ? Location: Greater Delhi Area ? 40 connections on LinkedIn.



mitsubishi hitachi power systems india p.ltd.
delhisouth. 110025. 8-b, 8th floor, lotus
towerscommunity centre,new friends colonynew
delhi190dl. mitsubishi hitachi power systems india
private limited. bangalore. 560027. 116 6th floor
pride hulkullalbagh roadbangalore656kn



YOKOHAMA, JAPAN (April 24, 2020) - Mitsubishi Hitachi Power Systems, Ltd. (MHPS), a part of Mitsubishi Heavy Industries (MHI) Group, today announced its new company name, Mitsubishi Power, and will also adopt a new corporate brand logo. Under its new name, Mitsubishi Power will work to enhance its reputation around the world as one of the



The overall rating of Mitsubishi Power India is 4.2, with Work-Life balance being rated at the top and given a rating of 4.1. However, Skill development is rated the lowest at 3.4.To know first hand how is it like to work at Mitsubishi Power India read detailed reviews by job profile, department and location in the reviews section.



All e-mails from the system will be sent to this address. The e-mail address is not made public and will only be used if you wish to receive a new password or wish to receive certain news or notifications by e-mail. Directors of MITSUBISHI POWER INDIA PRIVATE LIMITED . Director Identification Number Name Designation Date of Appointment



Mitsubishi Hitachi Power Systems India Private Limited is a Subsidiary of Foreign Company, incorporated on 28 Sep, 2011. It's a private unlisted company and is classified as "company limited by shares".