

Why should you buy a lithium battery for a mobility scooter?

With lithium technology, you'll charge your batteries faster, achieve longer battery life, and experience greater reliability from one of Pride's most popular mobility scooter lineups. Lithium batteries, the same technology used to power your smartphone and electric vehicles, pack more power into smaller, lighter units.

What kind of battery does a mobility scooter use?

It's worth noting that most mobility scooters come with GEL batteries that are still considered sealed lead-acid. Others often come with AGM-style SLA batteries, but again, all of those are considered SLA and cannot compare with the performance of a Lithium Chemistry battery.

What makes a Go-Go endurance Li mobility scooter a good choice?

Battery performance defines the Go-Go Endurance Li Mobility Scooter. With lithium technology, you'll charge your batteries faster, achieve longer battery life, and experience greater reliability from one of Pride's most popular mobility scooter lineups.

Should I buy a SLA battery for my mobility scooter?

The only reason why you would want to stick with a traditional SLA battery is due to cost. SLA batteries are heavy, they discharge faster, and only last about 2 years in states that are humid and hot. It's worth noting that most mobility scooters come with GEL batteries that are still considered sealed lead-acid.

Should you buy a lightweight mobility scooter?

Lightweight mobility scooters make mobility achievable for those who have trouble walking but still have the desire to travel, work and visit friends and family when they please. But options are plentiful, and it can be difficult to navigate the variety of brands and models of lightweight mobility scooters available both in person and online.

Are sealed-lead-acid batteries the future for mobility scooters?

In simple terms, Lithium batteries are the future, and sealed-lead-acid batteries are soon to be antiquated for mobility scooters. We'll get into the more specific details and explain why. Please note that not all lithium batteries are TSA-compliant.

MOBILITY SCOOTER WITH LITHIUM BATTERY



Generally, you can classify mobility scooters into three different range categories: short, medium, and long. Short-range mobility scooters will go about 9 miles on a single charge. Mid-range scooters will get up to about 25 miles, and long-range scooters are the rarest- they can travel upwards of 40 miles without losing battery. Keep in mind that each rating for the range will ???



Buy SuperHandy Passport Mobility Scooter for Adults- Foldable, 3 Wheel, Airline Travel Friendly - 13 Mile Range, Includes 2 Removable 48V Lithium-ion Batteries & Charger (275 Lbs) on Amazon FREE SHIPPING on qualified orders



Confused about mobility scooter batteries? This guide will cover the different types of batteries and the best places to buy them from. Lithium-ion Battery. The lithium-ion battery is one of the newest types of batteries and has ???

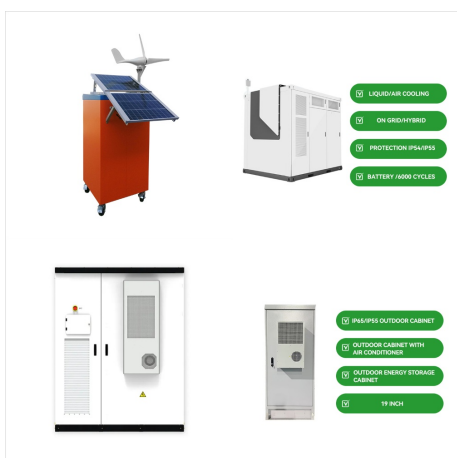
MOBILITY SCOOTER WITH LITHIUM BATTERY



Lithium Batteries. Folding electric wheelchairs and mobility scooters that fold up, usually work with lithium batteries. When traveling on an airplane, you need to check with the airline regarding the restrictions for traveling with Lithium batteries. Per the FAA any lithium battery for mobility purposes larger than 300 Watt-Hours is not in

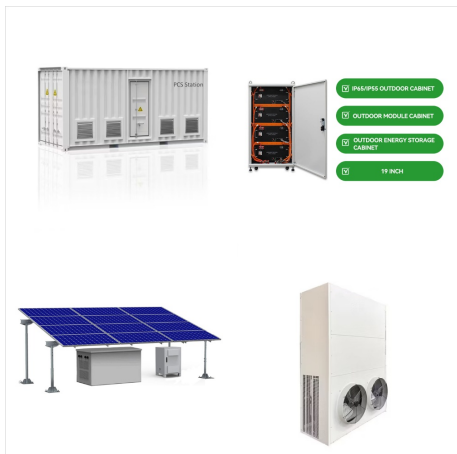


Benefits of LiFePO4 Mobility Scooter Batteries. Here are some benefits LiFePO4 mobility scooter batteries offer: Increased Longevity ??? LiFePO4 technology gives up to 10 x charging cycles of a conventional sealed lead-acid car battery. Enjoy longer battery life with less need for a replacement battery.

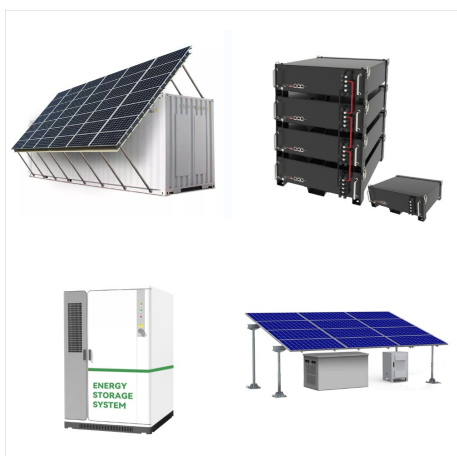


When selecting a mobility scooter battery, factors like battery type, capacity, and price range play a crucial role in making an informed decision. Understanding the available battery options, including sealed lead-acid (SLA) and lithium-ion (Li-ion), along with considering capacity, price, and warranty, ensures a suitable and reliable choice for maintaining optimal mobility ???

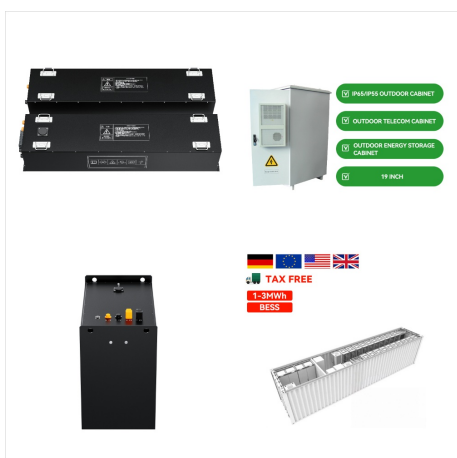
MOBILITY SCOOTER WITH LITHIUM BATTERY



When selecting a mobility scooter battery, factors like battery type, capacity, and price range play a crucial role in making an informed decision. Understanding the available battery options, including sealed lead-acid (SLA) ???



1. Understanding the advantages of lithium batteries. Before diving into the conversion process, let's explore the benefits of using lithium batteries in your mobility scooter: a. Longer life: Lithium batteries have a longer life span than SLA batteries, meaning fewer replacements and lower overall costs in the long run. b.



Lithium-Ion. Lithium-Ion batteries are the most common type of power supply used in electric scooters. They are a relatively recent development but have become more popular than other battery types such as those that are lead-acid. When you discharge a lithium-ion battery, lithium atoms on the negative side of the battery become ionized.

MOBILITY SCOOTER WITH LITHIUM BATTERY



Zoom around as light as a feather with lithium mobility scooter batteries. They store the same amount of energy as traditional lead acid batteries, but with less than half the weight. Longer Lasting. These batteries may even outlast your electric scooter! Lithium batteries boast a lifespan 2 to 4 times that of lead acid batteries.



Mobility scooters have become a game changer for people with mobility issues, but their batteries will eventually need to be changed. The article provides a step-by-step guide on how to change the batteries of a mobility scooter, as well as a tutorial video and practical tips to maintain and extend their lifespan.



5 tips to extend your lithium-ion battery life 1. Avoid running your lithium-ion battery completely dry. Lithium-ion batteries that never completely deplete last longer because they never complete a full discharge cycle.. For example, if you only use half of your battery in a day before recharging, you could potentially double the number of charging cycles you get out of a single ???

MOBILITY SCOOTER WITH LITHIUM BATTERY



Buy SuperHandy Passport Mobility Scooter for Adults- Foldable, 3 Wheel, Airline Travel Friendly - 13 Mile Range, Includes 2 Removable 48V Lithium-ion Batteries & Charger (275 Lbs) on Amazon FREE SHIPPING ???

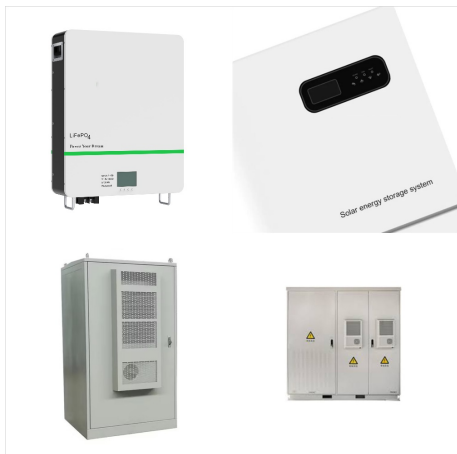


Nearly all Pride Mobility scooters use a sealed lead acid (SLA) battery, save for the few models that use lithium-ion batteries. SLA is a blanket term that is best understood through history. Lead acid batteries were first developed in 1859 and the technology is still used in three kinds of modern batteries: flooded, absorbent glass mat (AGM)



Yes, you can use a lithium car battery on a mobility scooter. For example, a Dakota Lithium plus 12V 135Ah battery has the power to start cars and trucks plus deep cycle performance, making it interchangeable as a car battery or a mobility scooter battery. With 135 Amp Hours the DL+ battery would provide 40 to 50 miles of driving range.

MOBILITY SCOOTER WITH LITHIUM BATTERY



Mobility Scooter Batteries. Mobility Scooter Batteries. All Categories. Automotive & Powersports; Batteries by Voltage; Battery Chargers; Chargers; Clothing; 12V 46Ah Dakota Lithium U1 LiFePO4 Battery \$ 499 \$ 399. Be The First to Know. Get access to exclusive deals, hear about new products before anyone else, and enjoy tips, tricks, and DIY



Although mobility scooter batteries are generally potent, they can leak acid if exposed to high temperatures. For example, live in sub-zero winters or even just high summer temperatures. Your batteries could be at risk of leaking!

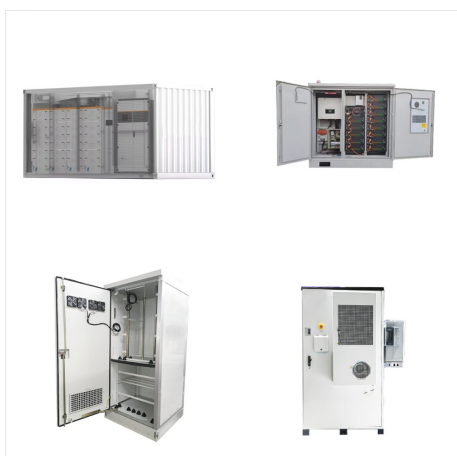


Dakota batteries cut that weight in half, allowing easier lifting and transportation. Increased Travel Range. One of the most notable benefits of upgrading your mobility scooter or power wheelchair with Dakota Lithium batteries is the substantial increase in travel range. Compared to standard SLAs, Dakota batteries offer 2 to 3 times more distance.

MOBILITY SCOOTER WITH LITHIUM BATTERY



Lithium Mobility Scooters are powered by advanced lithium-ion batteries making them the lightest and most reliable travel scooters in the UK. Ideal for air travel. The store will not work correctly when cookies are disabled. Join the CareCo email list. And be the first to hear about new products, restocks, upcoming sales and discount codes.



Elevate your mobility scooter's power with lithium batteries! These cutting-edge energy solutions offer superior advantages over traditional lead-acid batteries. This blog post is your guide to everything lithium for mobility scooters ??? from functionality insights to choosing the ideal option for enhanced mobility. Buckle up and explore a world of convenience and ???



Journey So Lite Folding Mobility Scooter (S1) 10 AH Lithium Battery . Model: Journey Health | 08505 - OEM Replacement: Yes - Competitively Priced - Tax-Free Sales! - Free Shipping! - Ships Within 3 to 5 Days! Our Price: \$412.50. MSRP: \$500.00. You Save: \$87.50.

MOBILITY SCOOTER WITH LITHIUM BATTERY



2 x 12v 75ah Lithium Mobility Scooter Batteries + Charger Bundle ? 1,299.99 Add to basket Lithium mobility scooter batteries are 75% lighter than standard batteries, making them ideal for those who need a little extra help getting around.



Did you know many mobility scooters still use toxic lead acid batteries? Understandably, some manufacturers continue to use lead acid batteries because they are cheap and easy to source. However, when you factor in that lead acid batteries often need to be replaced every 1-3 years due to low cycle life, upgrading to a more expensive lithium ???



Electric wheelchair, mobility scooter. Lithium metal (non-rechargeable lithium) batteries are forbidden with these devices. Electric wheelchair, mobility scooter. The battery may remain installed if it is securely attached to the mobility device and the battery housing provides protection from damage, the terminals are protected from short

MOBILITY SCOOTER WITH LITHIUM BATTERY



About this item . Breakdown: Easy wireless disassembly for anyone with an active lifestyle ; Easy Transport: Includes 4-point carry handles ; Go The Distance: Features a lithium-ion battery pack with a range of 18 miles on a single charge.



Mobility scooter lithium batteries are a great way to get longer battery life and better performance out of your scooter. However, like all batteries, they will eventually need to be replaced. Here are some signs that it's time to replace your mobility scooter lithium battery:



AURA PORTABLE TRAVEL MOBILITY SCOOTER WITH LITHIUM BATTERY. Building on the success of the Airium, the Aura offers an enhanced aluminium and lithium option, perfect for both everyday use and travel. With slightly larger dimensions, pneumatic tyres, and a captain's seat, the Aura ensures comfort and durability. The lightweight aluminium frame

MOBILITY SCOOTER WITH LITHIUM BATTERY



Lithium mobility scooters represent a cutting-edge advancement in mobility technology, offering users a range of benefits associated with lithium-ion batteries. Compared to traditional battery options, lithium batteries are significantly lighter, contributing to the overall portability of the scooter. Additionally, lit



Power your mobility scooter with high-quality, long-lasting, lithium-ion & purified lead batteries. At Mobility Solutions Direct, we sell a wide range of wheelchair and mobility scooter batteries ranging in voltage from 12V to 24V, and amps from 10Ah to 100Ah.



Dakota batteries cut that weight in half, allowing easier lifting and transportation. Increased Travel Range. One of the most notable benefits of upgrading your mobility scooter or power wheelchair with Dakota Lithium ???