

How can Modula lift your material handling into the future?

Lift Your Material Handling into the Future with the Most Advanced Automated Storage and Retrieval Systems from Modula. Save up to 90% floor space and increase picking speeds to 300+ lines/hr with our popular Modula vertical lift modules and vertical storage.

What is Modula Slim?

Modula Slim, the compact vertical storage system, puts every inch of your warehouse space to use, made possible by dynamic tray height storage. What does that mean?

How much inventory can Modula store?

The Modula system was able to store approximately 90% of our inventory - we couldn't believe it! Modula saves us hours every day in set up time and the convenience of having all our inventory in one location. When we needed service, we had it within a couple hours of our call and the problem was solved. We are really happy.

What is a Modula lift?

Available in a wide range of sizes and capacities, Modula Lift is the ideal storage solution for industrial products, components and spare parts for all possible environments and industries. With a throughput of up to 130 trays per hour and a tray payload capacity of up to 2,200 lbs, Modula Lift is a workhorse of a machine.

What can you store in a Modula slim automatic vertical warehouse?

You can store all types of materials and products in your Modula Slim automatic vertical warehouse: loose materials, containers (boxes, bins, packs, cartons, cases), small items, spare parts, coils, flasks. It is available in various models and sizes, all with a depth of only 1.6 m.

Where are Modula products made?

Made in the USA, Modula products are available from dealers across North America who are ready to help you find the innovative solutions that best serve your needs. The Modula systems enable us to pick components for kits much faster as the operators used to walk between sections, looking down rows of aisle trying to find a specific location.



Modula, automatic warehouses since 1987 The company designs and manufactures vertical lift modules, picking solutions and WMS software for companies of all sizes, from every industry. An extensive range of models of different sizes, capacities and types translates into broad product configuration options, to meet each client's varying



Products. Key Benefits of Automation Transform your operations with Modula's solutions Automated storage solutions boost productivity and accuracy, increase storage capacity, and enhance worker safety Discover all benefits; Key Benefits of Automation; Vertical Lift Modules. Modula Lift Our most popular VLM model; Modula Slim For areas with smaller footprint



Modula Slim, the compact vertical storage system, puts every inch of your warehouse space to use, made possible by dynamic tray height storage. What does that mean? There are no fixed heights, the warehouse can calculate the positioning of the trays to optimise the gaps between them and can reposition the trays inside the structure once



Whether you are planning to purchase or currently own a Modula product, our customer service team is here for you every step of the way. With support from both our in-house experts and our 70-plus dealers across North America, we're ready to assist throughout the lifecycle of your automated storage systems.



The Home Appliance Industry or Consumer Appliance Industry, covers the production and distribution of electrical and mechanical devices designed for use in homes. The range of products extends from large appliances like refrigerators and washers to smaller items like blenders and vacuum cleaners. The nature of the products and the global scale of operations present ???



The Modula Lift vlm warehouse is one of the most reliable and advanced vertical storage solutions available on the market. Its revolutionary design enables workshops, distribution centres and facilities of all sizes to improve the ???



Products. Key Benefits of Automation Transform your operations with Modula's solutions Automated storage solutions boost productivity and accuracy, increase storage capacity, and enhance worker safety Discover all benefits; Key Benefits of Automation; Vertical Lift Modules. Modula Lift Our most popular VLM model; Modula Slim For areas with smaller footprint



Modula Next. Modula Next is an innovative automated storage and retrieval solution, that combines the space-saving and efficiency of Vertical Lift Modules (VLMs) with all the precision and control of industrial vending machines.. When an item is requested, the unit retrieves the specific tray where the item is stored and brings it to the picking bay at an ergonomic height.



To apply for residency in Sierra Leone as a Smart Modular Cold Chain Storage Manager, migrants must follow the following steps: Obtain a Work Permit: Applicants must secure a work permit from the Sierra Leone Ministry of Labour and Social Security.





Modula manufactures automated picking and storage solutions designed to optimize space, as well as improve picking and storage operations. Modula's US manufacturing plant, located in Lewiston, ME, is equipped with the latest in automation, from laser cutting and welding to automated punches, brakes, and presses.



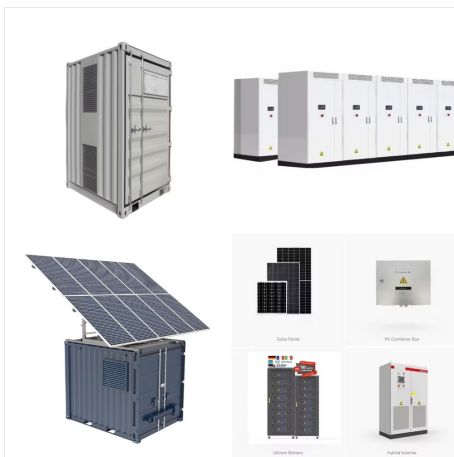
Products. Key Benefits of AutomationTransform your operations with Modula's solutions Automated storage solutions boost productivity and accuracy, increase storage capacity, and enhance worker safetyDiscover all benefits; Key Benefits of Automation; Vertical Lift Modules. Modula Lift Our most popular VLM model; Modula Slim For areas with smaller footprint



Products. Key Benefits of AutomationTransform your operations with Modula's solutions Automated storage solutions boost productivity and accuracy, increase storage capacity, and enhance worker safetyDiscover all benefits; Key Benefits of Automation; Vertical Lift Modules. Modula Lift Our most popular VLM model; Modula Slim For areas with smaller footprint



Visit Modula's Franklin, Ohio facility for a free, no-obligation tour. See our advanced vertical lift machines and automated solutions in action. Key Benefits of Automation Transform your operations with Modula's solutions Automated storage solutions boost productivity and accuracy, increase storage capacity, and enhance worker



A Modula VLM is an automated vertical storage system that takes up a minimal amount of space. These systems can store large quantities of products in a safe, secure environment and making them available to the operators in an elegant way with a scan of a barcode or one touch of the user-friendly Copilot controller.



Tassalini Spa Transforms its Warehouse with Modula VLMs Case Study Summary. Tassalini Spa, with over a century of expertise in manufacturing valves and fittings for industries like food, wine, pharmaceuticals, beverages, and cosmetics, has revolutionized its warehouse operations through automation. With a need to organize materials based on form, quality, and appearance, ???



LA Metro Improves Storage Safety and Efficiency With VLMs. Government agency meets U.S.-made contract requirement by selecting Modula VLM to meet storage safety and efficiency needs.. Metro, the Los Angeles County Metropolitan Transportation Authority, is the transportation planner, designer, builder and operator of the Los Angeles County's transportation system.



The Modula Lift vlm warehouse is one of the most reliable and advanced vertical storage solutions available on the market. Its revolutionary design enables workshops, distribution centres and facilities of all sizes to improve the accuracy and efficiency ???



These Sierra Leone container storage units are more than just a place to keep goods; they are transforming into vibrant hubs for commerce and trade. The versatility of Sierra Leone prefabricated containers allows for custom configurations that suit various business needs, from office spaces to bustling marketplaces.



These Sierra Leone container storage units are more than just a place to keep goods; they are transforming into vibrant hubs for commerce and trade. The versatility of Sierra Leone prefabricated containers allows for ???



A Modula VLM is an automated vertical storage system that takes up a minimal amount of space. These systems can store large quantities of products in a safe, secure environment and making them available to the operators in an elegant ???



Products. Key Benefits of Automation Transform your operations with Modula's solutions Automated storage solutions boost productivity and accuracy, increase storage capacity, and enhance worker safety Discover all benefits; Key Benefits of Automation; Vertical Lift Modules. Modula Lift Our most popular VLM model; Modula Slim For areas with smaller footprint





Bios Line Streamlines Operations with Modula VLMs Case Study Summary. Founded in 1986 in Padua, Bios Line is a leading company in the field of dietary supplements and cosmetics, offering around 500 references to 5,000 customers in Italy and over 40 countries worldwide. To enhance efficiency and adapt to technological challenges, Bios Line integrated Modula Vertical Lift ???



Products. Key Benefits of Automation Transform your operations with Modula's solutions Automated storage solutions boost productivity and accuracy, increase storage capacity, and enhance worker safety Discover all benefits; Key Benefits of Automation; Vertical Lift Modules. Modula Lift Our most popular VLM model; Modula Slim For areas with smaller footprint