

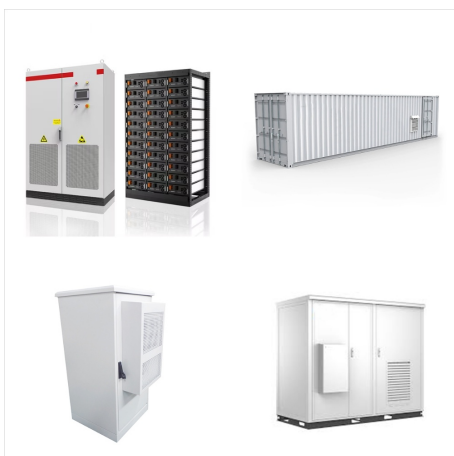
MONOLITHIC POWER SYSTEMS MEXICO



Monolithic Power Systems, Inc. was founded in 1997 by Michael Hsing, who is the current CEO. Prior to the founding of the corporation, Hsing worked as a Senior Silicon Technology Developer at several analog integrated circuit companies. The company then diversified into DC/DC products. In November 2004, Hsing took the company public with an IPO.



GB200 PCIe ? 1/4 ?Astera Labs (ALAB US) ???
How Large is the GB200 Content Opportunity?? 1/4
?,GB200power modules, ???



The MP20051 is a low-dropout linear regulator that supplies up to 1A current with a 140mV dropout voltage. The externally-adjustable output voltage has a range of 0.8V to 5V from an input voltage of 2.5V to 5.5V. An internal PMOS pass ???

MONOLITHIC POWER SYSTEMS MEXICO



Since MPS was founded 23 years ago, we have delivered highly efficient power solutions, emphasizing ease of use and time to market, for the benefit of our customers. MPS ESG Report | A Commitment to Sustainability



El inventario de Monolithic Power Systems est? disponible en Wolfchip M?xico. Haga su pedido ahora y env?elo inmediatamente desde un distribuidor de confianza de Monolithic Power Systems - Wolfchip M?xico



16V, 100A, Scalable, DC/DC Power Module with PMBus. The MPM3695-100 is a 100A, scalable, fully integrated power module with a PMBus interface. The device offers a complete power solution that achieves up to 100A of output current, with excellent load and line regulation across a wide input voltage range.



The MP20051 is a low-dropout linear regulator that supplies up to 1A current with a 140mV dropout voltage. The externally-adjustable output voltage has a range of 0.8V to 5V from an input voltage of 2.5V to 5.5V. An internal PMOS pass element allows for a



MPS POE powered Devices support IEEE PoE 802.3af(13W) and IEEE PoE 802.3at (25.5W) with isolated power Controller or MOSFET- integrated power converter. These devices integrate detection, 1-event and 2-event classification, current limit, up to 100V hotswap MOSFET, PD Power Good, Type-2 PSE Indicator, and isolated DCDC power supply. Our POE solutions also ???



5 ? Its lighting control ICs for backlighting are used in systems that provide the light source for LCD panels. Revenue in USD (TTM) 2.04bn; Net income in USD 434.24m; Incorporated 2004; Employees 3.56k; Location Monolithic Power Systems Inc 5808 Lake Washington Blvd. Ne KIRKLAND 98033 United States USA; Phone +1 (425) 296-9956; Fax +1 (302) 655-5049

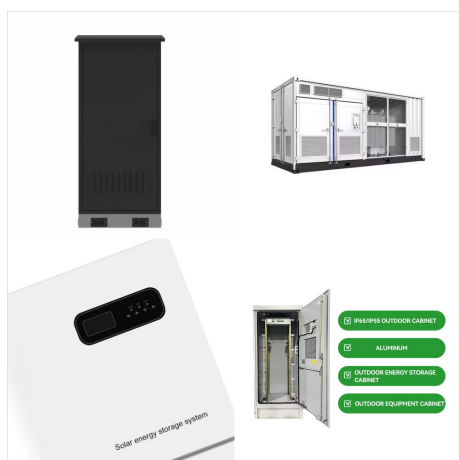
MONOLITHIC POWER SYSTEMS MEXICO



Monolithic Power Systems Controller family offers an extensive portfolio of controller solutions. MPS offers controllers for Buck, Boost and Buck/Boost and up to 6 phases. With our digital COT (constant on time) control and fast transient response, we offer superior efficiency. Our controllers have industry leading performance and flexibility



Mexico. element14. 1800 88 6223.
my-sales@element14 . Suite 1005, 10th Floor,
WismaHamzah-Kwong Hing, No 1 Leboh Ampang
50100 Kuala Lumpur, Malaysia. Monolithic Power
Systems, Inc. +1 408-826-0600: Contact MPS :
South America: Avnet Silica (Avnet EMG Ltd.) +44
(0)1296 678920:



Ihr Allzeithoch erreichte die Monolithic Power Systems Aktie vor 113 Tagen am 21.08.2024 bei einem Kurs von 947,16 USD. Heute notiert die Aktie um 37,1% tiefer bei 596,16 USD. Weitere Informationen zur Dividende von Monolithic Power Systems und ihrem Anteil an der Gesamtrendite finden Sie im Dividenden-Profil von Monolithic Power Systems.

MONOLITHIC POWER SYSTEMS MEXICO



Our DC-DC power converters insure your devices dc power conversion is accurate, stable, low noise, low EMI, low ripple, and efficient while requiring minimal component count and cost. Our dc power converters are available in a wide variety of configurations, including step-down (buck), step-up (boost), and step-down/step-up (buck/boost). Our cutting-edge, cost-effective dc dc ???



We have become a technical leader in Integrated Power Semiconductor and Systems Power delivery architectures in the world. We accomplish this by: "MPS provides the best solutions for clients using our proprietary technology and highly integrated monolithic products. Meanwhile, we will try our best to provide an excellent platform to help



Michael Hsing, pioneering engineer and CEO, founded Monolithic Power Systems, Inc. in 1997 with the belief that an entire power system could be integrated onto a single chip. Under his leadership, MPS has succeeded not only in developing a monolithic power module that truly integrates an entire power system in a single package, but also it



El inventario de Monolithic Power Systems est? disponible en Wolfchip M?xico. Haga su pedido ahora y env?elo inmediatamente desde un distribuidor de confianza de Monolithic Power ???



4 ? Monolithic Power Systems has a dividend yield of 0.83%, which is in the bottom 25% of all stocks that pay dividends. Dividend Growth. Monolithic Power Systems does not have a long track record of dividend growth. Dividend Coverage. The dividend payout ratio of Monolithic Power Systems is 56.37%.



Monolithic Power Systems (MPS) provides small, highly energy-efficient, easy-to-use power solutions for systems found in industrial applications, telecom infrastructures, cloud computing, ???