



Amazon : Monster X6 All-in-One Bluetooth Speaker System, Party Speaker, PA | 600W Power, 15" Sub | Beat Synced LED Lights, All Terrain Wheels, TWS Pairing, App Control | Includes Adjustable Tripod & Microphone : Electronics



The stock exhaust tubing measures a mere 3.5" on the outside, compared to the Monster Exhaust's massive 5" outer diameter as such the Banks system offers a 110% greater flow area than stock. With a rocket nozzle-like tip, exhaust gasses are literally sucked out of the end of the exhaust, reducing back pressure all they back up to the turbo inlet.



Upgrade your 2020-23 Chevy or GMC Duramax with the new 5" Monster Exhaust. This high-performance exhaust system offers significant power gains, improved fuel economy, and a sleek, aggressive look. With its patented SideKick tip and constant-diameter design, the Monster Exhaust is the ultimate upgrade for your dually truck. Pre-order yours today and get ready to ???



In 2017, the operating system was upgraded to C-Monster 2.0, enhancing your Power-Pole speed and performance in all fishing applications. C-Monster 2.0 features a stronger RF signal (C Monster 2.0 features 900mhz vs. C-Monster 1.0 at 400mhz) so you can use your controllers from a longer range.



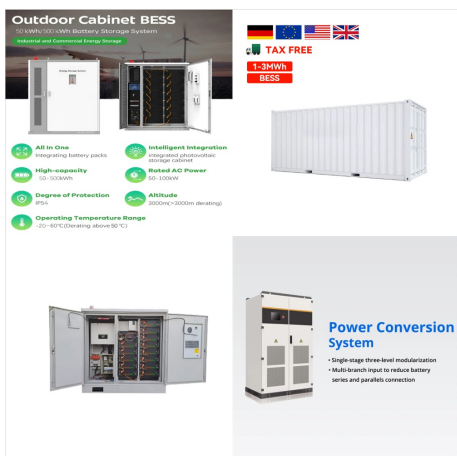
Find Banks Power Monster Exhaust Systems Crew Cab Pickup Body Style and get Free Shipping on Orders Over \$109 at Summit Racing! Banks Power Monster exhaust systems for gas and diesel vehicles use 100 percent stainless steel constant-diameter tubing to dramatically improve flow, slash backpressure, and lower operating temps. Only Banks offers ???



The Monster Power system was introduced into Diablo 3 in Patch v1.0.5 in October 2012, after being testable on the Diablo 3 Public Test Realm for several weeks. Inspired by the Diablo 2 Players X system, Monster Power allows players to set a level from 0-10 which will increase the difficulty of the game.



Find Banks Power Monster Exhaust Systems Natural System Finish and get Free Shipping on Orders Over \$109 at Summit Racing! Banks Power Monster exhaust systems for gas and diesel vehicles use 100 percent stainless steel constant-diameter tubing to dramatically improve flow, slash backpressure, and lower operating temps. Only Banks offers a truly engineered system. ???



FURITEK MONSTER BRUSHLESS POWER SYSTEM FOR TRX-4MT Introducing the Furitek MONSTER brushless power system for TRX-4MT monster truck conversion version, the system includes the FURITEK MINI GODZILLA 1410 7500kv with small size yet very powerful and fast and a Lizard Pro esc. The motor is designed with high power for the monster truck with a



Power-Pole CHARGE Marine Power Management Station The All-in-One, Charge on the Run, Smart Charger. The CHARGE is the most advanced power management available that does the work of three devices -- a traditional battery charger, a charge-on-the-run, and emergency start system -- all in one compact unit. CHARGE monitors power use and puts power where it's ???



Features Controls and Indicators Inputs and Outputs Specifications. Features. Developed by Richard Marsh: Monster Clean Power circuitry was designed by Richard Marsh, a world leading designer of ultra-high performance audiophile power circuits. Safety And Protection: The Monster HTS 1000 MKIII features over 6125 Joules of extreme protection that can absorb powerful ???



Pandemia series - 8 books separated into 2 parts, 4 + 4. The power system is that there are words of power, with which the person who hears it gains power and enters new realms. The world has multiple species (elves etc), empires, cultures and Gods. The power system and the mysteries of the words will slowly be revealed over the first 4 books.



Get outstanding protection against voltage spikes and power surges, while improving the performance of your home theater system! Monster's remarkable HTS 3600 home theater PowerCenter features their proprietary Clean Power??? Stage 3 (v.2.0) line conditioning technology, drastically reducing the signal-polluting interference that causes image streaking, ???



MONSTER's PATENTED CLEAN POWER ???
STAGES Monster Clean Power performs two tasks that are vital to maintaining optimum home theater performance: 1) noise filtration and 2) noise isolation. The higher the Clean Power stage number (1-5), the more sophisticated and advanced the filters are that reject noise generated on the AC powerline.



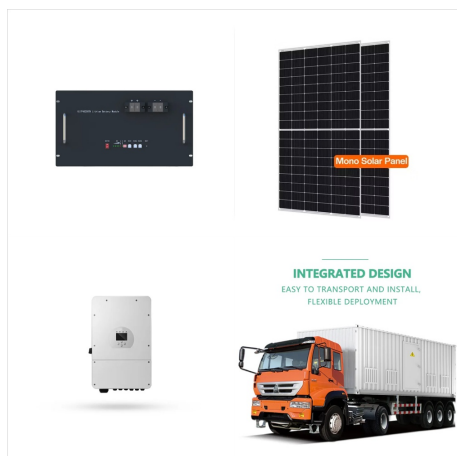
Find Banks Power Monster Exhaust Systems and get Free Shipping on Orders Over \$109 at Summit Racing! Banks Power Monster exhaust systems for gas and diesel vehicles use 100 percent stainless steel constant-diameter tubing to dramatically improve flow, slash backpressure, and lower operating temps. Only Banks offers a truly engineered system. While ???



The HTS 2600 MKII includes coaxial jacks to protect your system from surges coming through your cable or satellite TV line. The front panel LED indicators make it easy to keep tabs on the state of your power. Monster's 5-year warranty includes \$400,000 insurance on properly connected equipment. Monster Clean Power Stage 2 (v.2.0):



Get knockout protection against voltage spikes and power surges, while quieting line noise that can compromise the performance of your home theater system. Using Monster Clean Power??? Stage 2 (v.2.0) line conditioning technology, the HTS 2600 offers three types of noise filters ??? ultra-high current audio, analog audio, and video



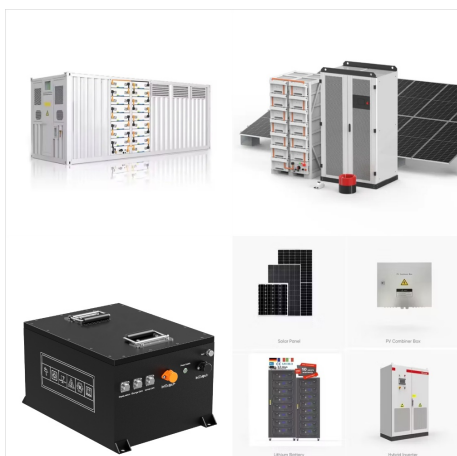
Features Inputs and Outputs Control/Display Warranty. Features. Design: This surge protector is a large, component-sized unit which protects connected equipment from power surges, AC power line noise, and noise generated from other components. Monster Cable uses Clean Power v.2.0 Stage 3 in this unit, which includes isolation between outlets to reject any noise generated by ???



C-Monster 1.0: Indicator Light Guide LIGHT INDICATION Flashing GREEN Light NORMAL: System has proper voltage (11.3V ??? 16.4V). Flashing ORANGE Light LOW: System has low voltage (10.3V ??? 11.2V). Flashing RED Light WARNING: System has low voltage (10.2V or less). NOTE: When voltage is below 8.2V or above 16.5V the unit will not operate.



Furitek Traxxas TRX4M Monster brushless power system. Features the small size yet very powerful and fast Furitek Greyhound 1410 7500kV motor with the proven Lizard Pro Electronic Speed Controller. The Greyhound with special firmware from the Lizard Pro ESC is designed with high power for monster trucks to provide you with a powerful and



BUY ON AMAZON Power Center Vertex is an elite surge protector with an extendable USB power hub. 3,000 Joule Rating 6 Grounded AC Outlets 4 Foot Detachable Magnetic USB Hub 20W USB-C Power Delivery Port and 2 Fast Charge USB-A Ports Spill-Proof Cord with a Combined Reach of 10 Feet Monster will replace its value up to \$200,000. Go to item 1



To enjoy ultimate power conditioning and protection for a truly massive system, use the AVS 2000 in conjunction with a Monster PowerCenter??? like the HTS5100MK2 (which offers coax and phone line protection, along with superior EMI/RFI noise filtration). Rack-mount ears included.



BUY ON AMAZON Monster Power Grid is a portable power station that can power virtually anything and everything. Power Up To 9 Devices at Once Ultra-High-Capacity Battery 2 AC Outlets, a DC Port, and Car Port USB-C with Power Delivery and Fast Charge USB-A Ports High-Speed Qi Wireless Charging Pad



Find Banks Power Monster Sport Exhaust Systems and get Free Shipping on Orders Over \$109 at Summit Racing! Banks Power Monster Sport exhaust systems offer monster performance and a modest price. They use 100 percent stainless steel constant-diameter tubing to dramatically improve flow, slash backpressure, and lower operating temps. Replacing the ???



Features. Overview: The Monster Power HDP 2500 High Definition PowerCenter protects your home audio/video equipment from dangerous power surges and spikes. It has 11 AC outlets (including one on the front panel), a USB Power Port, as well as coaxial, telephone (RJ-14) and network (RJ-45) jacks for complete protection.