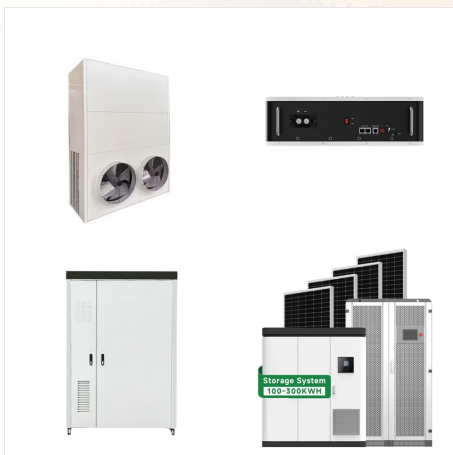
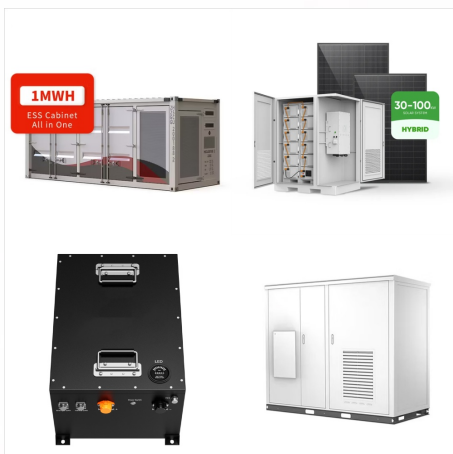




What's a use-case for energy puller modules? It's easy to pipe energy into a router via pretty much any mod which handles energy. Will consider a direction toggle for the distributor. Guess ???



I love the modular Routers Energy Distr. module, it works on most things, but ran into a bump in the road. I am trying to use it with Thermal machines, like the pulverizer and instead of getting 1k a tick, it gets 20rf/t. I've pulled it off other machines, and still 20rf/t. I slapped energy 6 upgrades on it and still nothing.



Welcome to Modular Routers! This is a flexible mod for moving items around in numerous ways. With a single block - the Item Router - and one or more plug-in modules, you can pull items from an inventory (including modded inventories like Storage Drawers), send them to other inventories near & far, place items as blocks, break blocks, drop items



# MONTSERRAT MODULAR ROUTER ENERGY DISTRIBUTOR



Modular Router to Distribute Power. By putting an Energy Upgrade on a router, we can turn it into a battery. There are further upgrades that can allow it to hold more power and distribute it at faster rates. The energy ???



What's a use-case for energy puller modules? It's easy to pipe energy into a router via pretty much any mod which handles energy. Will consider a direction toggle for the distributor. Guess it makes sense, given the item distributor can do it.



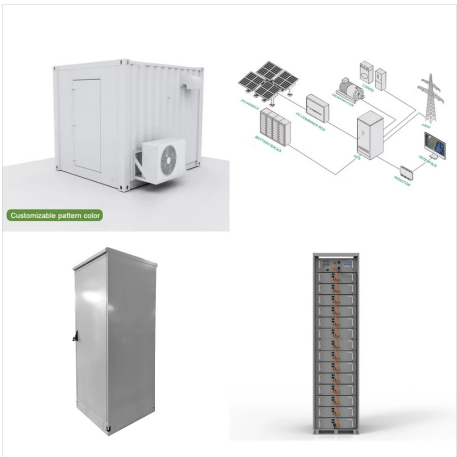
Modular Router to Distribute Power. By putting an Energy Upgrade on a router, we can turn it into a battery. There are further upgrades that can allow it to hold more power and distribute it at faster rates. The energy distributor doesn't have any internal configuration,,,



# MONTSERRAT MODULAR ROUTER ENERGY DISTRIBUTOR



(Distributor Module), (Modular  
Routers),MOD,Minecraft()MOD()MOD???



Welcome to Modular Routers! This is a highly flexible mod for moving items around the world in various ways. With a single block - the Item Router - and a selection of plug-in module items, you can: pull items from an inventory (including modded inventories like Storage Drawers) send them to other inventories near & far; place items as blocks



I love the modular Routers Energy Distr. module, it works on most things, but ran into a bump in the road. I am trying to use it with Thermal machines, like the pulverizer and instead of getting ???