

What does Svalbard and Jan Mayen stand for?

Svalbard and Jan Mayen (Norwegian: Svalbard og Jan Mayen, ISO 3166-1 alpha-2: SJ, ISO 3166-1 alpha-3: SJM, ISO 3166-1 numeric: 744) is a statistical designation defined by ISO 3166-1 for a collective grouping of two remote jurisdictions of Norway: Svalbard and Jan Mayen.

What is Svalbard & Jan Mayen in ISO 3166-2?

ISO 3166-2:SJ is the entry for Svalbard and Jan Mayen in ISO 3166-2, a system for assigning codes to subnational administrative divisions. However, further subdivision for Svalbard and Jan Mayen occurs under Norway's entry, ISO 3166-2:NO:

What is a Svalbard & Jan Mayen islands?

The United Nations Statistics Division also uses this code, but has named it the Svalbard and Jan Mayen Islands. Svalbard is an archipelago in the Arctic Ocean under the sovereignty of Norway, but is subject to the special status granted by the Svalbard Treaty.

What do Svalbard and Jan Mayen have in common?

Svalbard and Jan Mayen have in common that they are the only integrated parts of Norway not allocated to counties. While a separate ISO code for Svalbard was proposed by the United Nations, it was the Norwegian authorities who took initiative to include Jan Mayen in the code. Its official language is Norwegian.

Who governs Svalbard?

The archipelago is administered by the Governor of Svalbard, which is subordinate to the Norwegian Ministry of Justice and Public Security. Unlike the rest of Norway (including Jan Mayen), Svalbard is a free economic zone and a demilitarized zone, and is not part of the Schengen Area nor the European Economic Area.

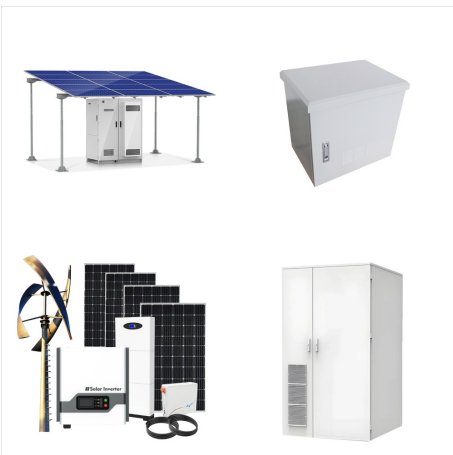
Does Svalbard have an ISO code?

While a separate ISO code for Svalbard was proposed by the United Nations, it was the Norwegian authorities who took initiative to include Jan Mayen in the code. Its official language is Norwegian. Both Svalbard and Jan Mayen consist almost entirely of Arctic wilderness, such as at Bellsund in Svalbard.

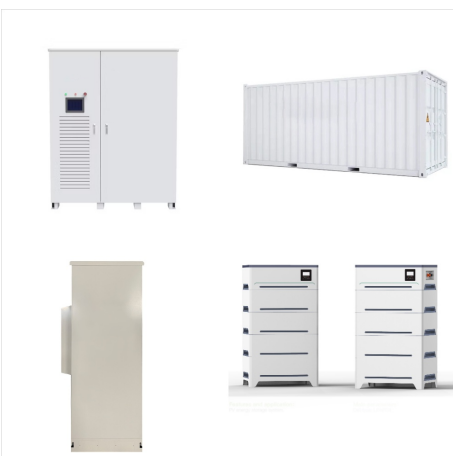
# NAME OF SOLAR COMPANY SVALBARD AND JAN MAYEN



Time for sunrise, sunset, moonrise, and moonset in Nordaustlandet ??? Svalbard ??? Svalbard and Jan Mayen. Dawn and dusk (twilight) times and Sun and Moon position. Takes into account Daylight Saving Time (DST).



Here are the top 10 companies in Svalbard & Jan Mayen: 1. Kings Bay AS. Industry: Coal mining; Market Influence: Primary coal mining operator in Svalbard; Notable Achievements: Operates the Svea mine, the northernmost coal mine in the world; 2. Store ???



Jan Mayen is a volcanic island located 71° N and 8° W with an area of 373km<sup>2</sup>. The island was discovered by Jan Jacobs May von Schellinkhout and named for him by his first mate and mapmaker. Jan Mayen was a center of whaling activity until 1640-1650. Jan Mayen was selected by Austria as a base for the first International Polar Year (1882-83).

# NAME OF SOLAR COMPANY

## SVALBARD AND JAN MAYEN



Time for sunrise, sunset, moonrise, and moonset in Sjukjera ??? Jan Mayen ??? Svalbard and Jan Mayen. Dawn and dusk (twilight) times and Sun and Moon position. Takes into account Daylight Saving Time (DST).



Calculations of sunrise and sunset in Svalbard and Jan Mayen ??? Svalbard and Jan Mayen for December 2024. Generic astronomy calculator to calculate times for sunrise, sunset, moonrise, moonset for many cities, with daylight saving time and time zones taken in account.



The islands are located north and northwest of Norway, within the southern limits of Arctic sea ice??? the northernmost point of Svalbard is within a 620 mi (1,000 km) of the North Pole. Svalbard is approximately 24,570 square mi (63,000 square km); Jan Mayen is approximately 145 square mi (373 square km).

# NAME OF SOLAR COMPANY SVALBARD AND JAN MAYEN



Explorando lo desconocido: todo lo que tienes que saber para viajar a Svalbard y Jan Mayen (Noruega) Si eres uno de esos viajeros aventureros que est?n buscando escapar del mundanal ruido y encontrar experiencias nuevas y desconocidas, est?s de suerte. En este art?culo te contamos todo lo que necesitas saber sobre dos destinos ?nicos: Svalbard [???



Jan Mayen has no permanent residents and visits to the island are rare. In fact, we're one of the few to attempt landings here. If conditions allow, you'll be setting foot in one of Earth's most remote places. Jan Mayen's surreal, moss- and lichen-streaked landscape is dominated by the Beerenberg volcanic cone.



Time for sunrise, sunset, moonrise, and moonset in Schr?der-Stranzfjellet ??? Svalbard ??? Svalbard and Jan Mayen. Dawn and dusk (twilight) times and Sun and Moon position. Takes into account Daylight Saving Time (DST).



# NAME OF SOLAR COMPANY

## SVALBARD AND JAN MAYEN



Time for sunrise, sunset, moonrise, and moonset in Tringafjellet ??? Svalbard ??? Svalbard and Jan Mayen. Dawn and dusk (twilight) times and Sun and Moon position. Takes into account Daylight Saving Time (DST).



Jan Mayen is a volcanic island in the Arctic Ocean located at the border of the Norwegian Sea and the Greenland Sea. The single island covers an area of 377 square kilometres (146 sq mi) and is dominated by the 2,277-metre (7,470 ft) tall Beerenberg volcano. The island's only population is a combined military and meteorological outpost that operates a LORAN-C ???



Calculations of sunrise and sunset in Svalbard Archipelago ??? Svalbard ??? Svalbard and Jan Mayen for December 2024. Generic astronomy calculator to calculate times for sunrise, sunset, moonrise, moonset for many cities, with daylight saving time and time zones taken in account.

# NAME OF SOLAR COMPANY

## SVALBARD AND JAN MAYEN



Svalbard and Jan Mayen offer an unparalleled encounter with the Arctic's untamed beauty - a journey through snow-capped mountains, icy fjords, and a world of rare wildlife. These lands invite adventurers to embark on an Arctic expedition, witnessing the wonders of nature in its purest form, leaving an indelible mark of awe and reverence for the



Find Solar Installation leads in Svalbard and Jan Mayen and surrounding areas, including contact information, business websites and social media profiles for all Solar Installation in Svalbard and Jan Mayen.

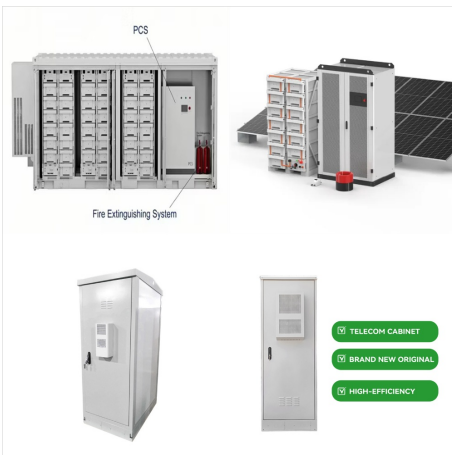


Svalbard and Jan Mayen (Norwegian: Svalbard og Jan Mayen, ISO 3166-1 alpha-2: SJ, ISO 3166-1 alpha-3: SJM, ISO 3166-1 numeric: 744) is a statistical designation defined by ISO 3166-1 for a collective grouping of two remote jurisdictions of Norway: Svalbard and Jan Mayen. While the two are combined for the purposes of the International Organization for Standardization (ISO) category???

# NAME OF SOLAR COMPANY SVALBARD AND JAN MAYEN



The name Svalbard was officially adopted for the archipelago by Norway under the 1925 Svalbard Act which formally annexed it. [14] The former name Spitsbergen was thenceforth restricted to the main island. In 1827 Baltazar Keilhau first proposed that the Old Norse toponym Svalbarði, found in medieval Icelandic sources, referred to Spitsbergen. [14] [15] Keilhau's theory was revived ???



Find Solar Installation leads in Svalbard and Jan Mayen and surrounding areas, including contact information, business websites and social media profiles for all Solar Installation in Svalbard ???



The gross salary range for people working in Svalbard and Jan Mayen is typically from 12,035 NOK (minimum salary) to 38,101 NOK (highest average, actual maximum salary is higher). This is the total monthly salary including bonuses. Salaries can vary drastically among different job ???